



Pink Colour Birds Wooden Idols Set

[Read More](#)

SKU: 00993

Price: ₹1,176.00 inc. GST

Stock: instock

Categories: [Decor](#), [Idols](#)

Tags: [wooden bird idols](#), [wooden handicrafts](#), [wooden toys](#)

Product Description



Green Parrots Wooden Idols Set for Home Decor

[Read More](#)

SKU: 00992

Price: ₹1,176.00 inc. GST

Stock: instock

Categories: [Decor](#), [Idols](#)

Tags: [wooden bird idols](#), [wooden handicrafts](#), [wooden idols](#), [wooden toys](#)

Product Description



Wooden Small Decorative Heron Idols Set

[Read More](#)

SKU: 00991

Price: ₹1,176.00 inc. GST

Stock: outofstock

Categories: [Decor](#), [Idols](#)

Tags: [wooden bird idols](#), [wooden handicrafts](#), [wooden toys](#)

Product Description



Down Trunk Wooden Standing Elephant Idols Set

[Read More](#)

SKU: 00988

Price: ₹1,176.00 inc. GST

Stock: outofstock

Categories: [Decor](#), [Idols](#)

Product Description



Black leaves Jumbo tree Tasar Painting 20 x 46 in

[Read More](#)

SKU: 00986

Price: ₹43,680.00 inc. GST

Stock: instock

Categories: [Patachitra Paintings](#), [Wall Decor](#)

Tags: [patachitra art](#), [patachitra painting](#), [patachitra paintings](#), [tasar leaves painting](#), [tasar tree painting](#)

Product Description

Dimension: Black leaves Jumbo tree Tasar Painting 20 x 46 inches. It depicts the nature perfect harmony and strength of life. This piece keeps things simple and modern in a classical manner. A unique piece sure to lay eyes on. **Material:** Tasar fabric. **Dimension(HW):** 46x20 inch Patachitra is one of the oldest and popular arts of Odisha. Most themes are based on Hindu mythology, folk tales, animals, tree of nature, flowers. A quite simple display of art in an intricate way of creativity. The rich use of colors, unique portrayal of motifs, and simple design with flower borders can be strongly visualized. The colors used in the painting are purely made from natural ingredients. The white color extract from seashells was powdered soaked to make the white paste. The color green is made from the green leaf and green stones. Red is made from a local stone called Hingula. Another stone named Khandaneela was used to extract the color blue. The yellow is made from, stone named Hartal. Black is extracted by burnt coconut shell. These five colors are also called Pancha Tatwa. Every color has its own significance, as the white illustrates Laughter (Hasya), Red stands furious, astonishment in yellow. The hair of the mouse and Buffalo used to make brushes and tied to the end of a bamboo stick. The floral border makes the art astonishingly beautiful. The above painting of the jumbo tree that branches outward to the sky, represents the interrelatedness of all things in nature. A message conveying us to grow and flourish. Like the life cycle of a tree, losing its leaves then blossom more greenish with every coming season our life also experiences darkness, light, death, rebirth. So it symbolizes positive energy, fertility, and new beginnings. Use this painting on the

wall of your gallery, office, Above the bed, you can hand two or more alongside each for a sophisticated look. **Care:** Wipe the surface with a soft cloth.



Light green tree Tasar Painting 19 x 45 in

[Read More](#)

SKU: 00985

Price: ₹43,680.00 inc. GST

Stock: instock

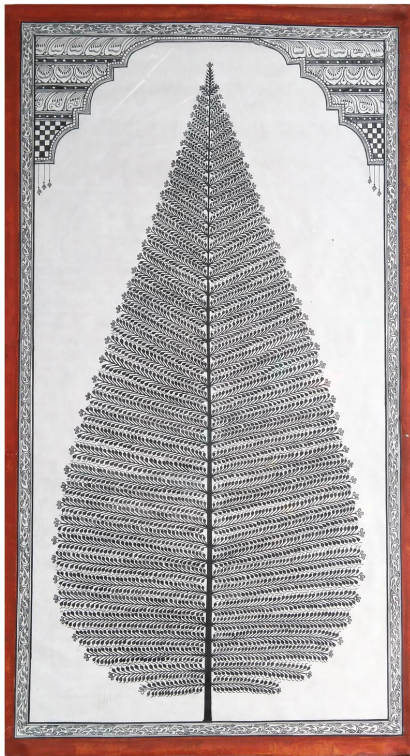
Categories: [Patachitra Paintings](#), [Wall Decor](#)

Product Description

Description: Light green tree Tasar Painting 19 x 45 inches. Complement a diverse variety of wall decor. A charming mix of patterns gives an attractive sense of balance to any space.

Material: Tassar Silk **Dimension(HW):** 45.5x19.5 inch Odisha is the land of art and culture. Usually, Patachitra is portrayed as the tale of mythology and folks. Other themes based also included. Nature-based Patachitra Tree of life, birds, animals, etc. The colors used in the painting are purely made from natural ingredients. The white color extract from seashells was powdered soaked to make the white paste. The color green is made from the green leaf and green stones. Red is made from a local stone called Hingula. Another stone named Khandaneela was used to extract the color blue. The yellow is made from, stone named Hartal. Black is extracted by burnt coconut shell. These five colors are also called Pancha Tatwa. Every color has its own significance, as the white illustrates Laughter (Hasya), Red stands furious, astonishment in yellow, The hair of the mouse and Buffalo used to make brushes and tied to the end of a bamboo stick. The floral border makes the art astonishingly beautiful. The above Patachitra is said to be nature-based. A spectacular art of a green tree. It keeps the wall simple and modern with the touch of local art. Give your wall a little extra ambiance. Makes the perfect use above the bed, gallery, hallway, office, you can make a twin or three pieces alongside each.

Care: Use a soft cloth to dust the painting.



Black leaves tree Tasar Painting 21 x 40 in

[Read More](#)

SKU: 00984

Price: ₹39,200.00 inc. GST

Stock: instock

Categories: [Patachitra Paintings](#), [Wall Decor](#)

Tags: [patachitra art](#), [patachitra painting](#), [patachitra paintings](#), [tasar leaves painting](#), [tasar tree painting](#)

Product Description

Black leaves tree Tasar Painting 21 x 40 inch. An eco-friendly painting to amplify your wall anywhere in your home/office. Timeless beauty showcasing nature to be paired with your desired frame.

Material: Tassar silk

Dimension(W: H:L):39.5: 21

Chitra was painted on Patta, known as Patachitra, as a religious offering to temples. These paintings showed mythological stories and life events of gods and goddesses. It also contained themes like nature, flowers, and animals.

The colors used in the painting are purely made from natural ingredients. The white color extract from seashells which were powdered and then soaked to make the white paste. The color green is made from the green leaf and green stones. Red is made from a local stone called Hingula. Another stone named Khandaneela was used to extract the color blue. The yellow is made from, stone named Hartal. Black is extracted by burnt coconut shell. These five colors are also called Pancha Tatwa. Every color has its significance, as the white illustrates Laughter (Hasya), Red stands furious, astonishment in yellow, The hair of the mouse and Buffalo used to make brushes and tied to the end of a bamboo stick. The floral border makes

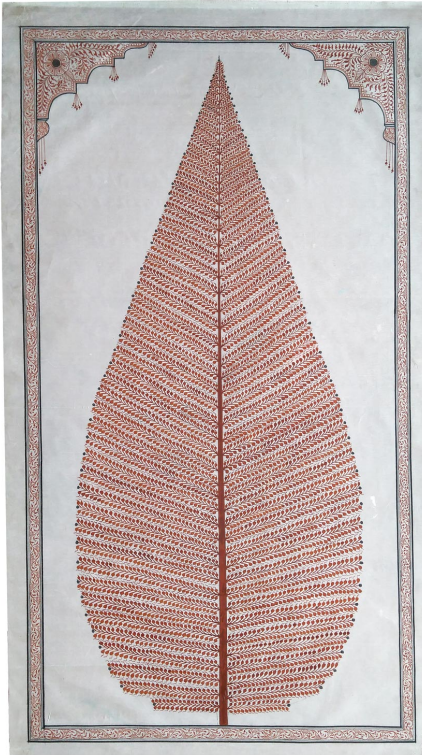
the art astonishingly beautiful.

Every picture has some signs of spirituality or religion. Above black leave tree painting, has many features from its root to branches, convey some important message for mankind. The root symbolizes stability, the branches symbolize growth.

The tree also symbolizes fertility, from its seed to sapling always finds a way to keep growing like a person's ability to live, grow and develop. Trees lose their leaves in winter and appeared new fresh leaves when spring approaches. Likewise, a human faces new begins, fresh starts, and death.

One can get a calming and relaxing feel from the tree. You can decor your wall with a single piece or make a set of three paintings to display over the bed or dresser or wall of your desired option. You can play with different arrangements for the decor in ziczac.

Care: Use cotton cloth t for dusting.



Dark-Red tree Tasar Painting 21 x 40 in

[Read More](#)

SKU: 00983

Price: ₹39,200.00 inc. GST

Stock: instock

Categories: [Patachitra Paintings](#), [Wall Decor](#)

Tags: [patachitra art](#), [patachitra painting](#), [patachitra paintings](#), [tasar leaves painting](#), [tasar tree painting](#)

Product Description

Dark-Red tree Tasar Painting 21 x 40 inches. Pair with your favorite frame, for endless decor possibilities on the wall. A vignette statement piece with a balanced visual experience.

Material: Tasar fabric

Dimension(W: H:L): 39.5: 21 inches

Patta means canvas, Chitra means picture. Pattachitra art is the most popular ancient art form of Odisha. It portrays simple themes through creative motives and unique designs. The themes are based generally on mythology, folk tales, nature, animals, and flowers. The rich color and display of art touch human emotion directly.

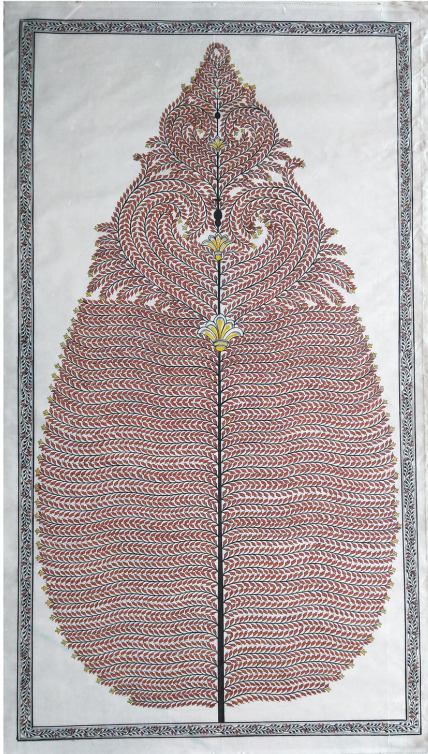
The colors used in the painting are purely made from natural ingredients. The white color extract from seashells was powdered soaked to make the white paste. The color green is made from the green leaf and green stones. Red is made from a local stone called Hingula. Another stone named Khandaneela was used to extract the color blue. The yellow is made from, stone named Hartal. Black is extracted by burnt coconut shell. These five colors are also called Pancha Tatwa. Every color has its own significance, as the white illustrates Laughter (Hasya), Red stands furious, astonishment in yellow, The hair of the mouse and Buffalo used to make brushes and tied to the end of a bamboo stick. The floral border makes the art astonishingly beautiful.

The tree symbolizes stability (the deep-rooted) and growth(the upward branches). A tree grows in the harshest condition, flood, heat, cold but withstanding in every condition likewise a human in a cycle of life faces many difficult situation but should stand with adapting challenges. Trees represent duality between life and death, like it, losses leaves in a season and blossoms new fresh leaves in another new season, human also faces darkness and light, birth and death in their life cycle. ita a symbol of growth and development I, likewise human too learn to grow and develop knowledge with experience.

Hangover the wall of the bed, dresser, hallway, office. Make a twin or triplet of the same art on the wall for stylish ambient.

Something with a more casual look rooted to traditional.

Care: Use a soft cloth to wipe the surface, to keep it dust-free.



Rose-Gold Tree Tasar Painting 22 x 40 in

[Read More](#)

SKU: 00982

Price: ₹41,440.00 inc. GST

Stock: instock

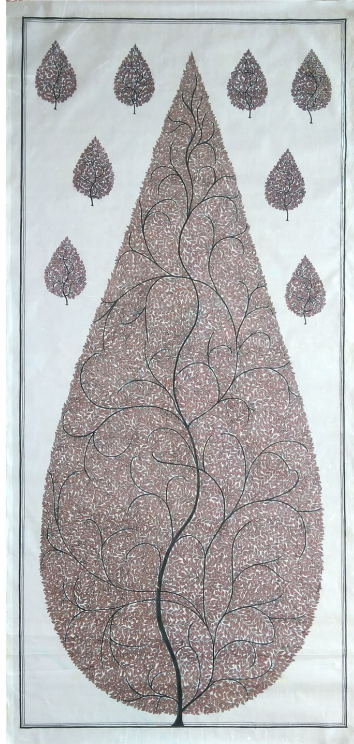
Categories: [Patachitra Paintings](#), [Wall Decor](#)

Tags: [pattachitra art](#), [pattachitra painting](#), [pattachitra paintings](#), [tasar leaves painting](#), [tasar tree painting](#)

Product Description

Description: Rose-Gold Tree Tasar Painting 22 x 40 inches. The artistic paint offers the timeless beauty of nature for any wall. Stylish ambient provides sophisticated aesthetics.

Material: Tasar fabric **Dimension(HW):** 40.5x22 inch A scroll cloth painting named Pattachitra from Odisha is quite popular for its unique patterns, design, and motifs to depict mythological and folk tales from ancient Hindu scriptures. The painting on the cloth is "Pattachitra". The colors used in the painting are purely made from natural ingredients. The white color extract from seashells was powdered soaked to make the white paste. The color green is made from the green leaf and green stones. Red is made from a local stone called Hingula. Another stone named Khandaneela was used to extract the color blue. The yellow is made from, stone named Hartal. Black is extracted by burnt coconut shell. These five colors are also called Pancha Tatwa. Every color has its own significance, as the white illustrates Laughter (Hasya), Red stands furious, astonishment in yellow. The hair of the mouse and Buffalo used to make brushes and tied to the end of a bamboo stick. The floral border makes the art astonishingly beautiful. The above Pattachitra is a piece of rose gold tree painting, a masterpiece of art done by using only minimal colors, simple and elegant to eyes upon. Use it above the bed, sideboards, or wall anywhere in the home, office, gallery. You can opt to hang two-three alongside each with a delightful feeling of the series. **Care:** Use a soft cloth to dust the painting.



Eggplant color tree Tasar Painting 20 x 42 in

[Read More](#)

SKU: 00981

Price: ₹41,440.00 inc. GST

Stock: instock

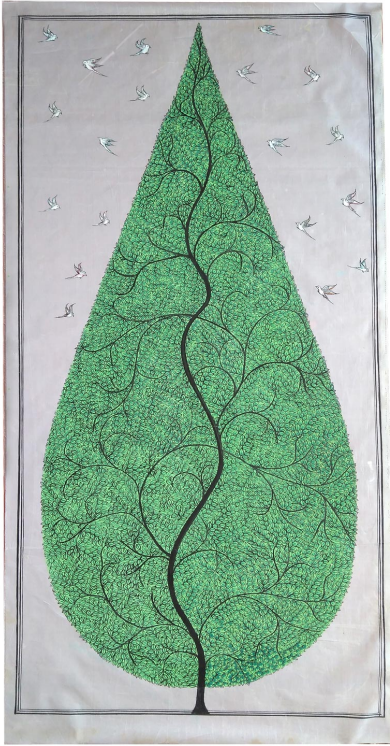
Categories: [Patachitra Paintings](#), [Wall Decor](#)

Tags: [patachitra art](#), [patachitra painting](#), [patachitra paintings](#), [tasar leaves painting](#), [tasar tree painting](#)

Product Description

Eggplant color tree Tasar Painting 20 x 42 in. Nature-inspired classical touch with contemporary design and delightful approach on the wall with minimal color. The famous art of Odisha, Patachitra. An expressive mythological tale of emotion, display through the pattern, motifs, and design. A true reflection of ancient art through sheer grace. The colors used in the painting are purely made from natural ingredients. The white color extract from seashells was powdered soaked to make the white paste. The color green is made from the green leaf and green stones. Red is made from a local stone called Hingula. Another stone named Khandaneela was used to extract the color blue. The yellow is made from, stone named Hartal. Black is extracted by burnt coconut shell. These five colors are also called Pancha Tatwa. Every color has its own significance, as the white illustrates Laughter (Hasya), Red stands furious, astonishment in yellow. The hair of the mouse and Buffalo used to make brushes and tied to the end of a bamboo stick. The floral border makes the art astonishingly beautiful. The trees branches are reaching up to the sky, which symbolizes growth and the deep roots into the soil symbolize stabilization. The tree symbolizes fertility, never stopping growing likewise men should gain knowledge and experience throughout their lifetime. Branches sprouting of different points and different direction symbolize a person's different experiences shape them into who they are. Like a tree in his life cycle losses its leaves in winter and appear new leaves again in spring, conveying a message that a human also faces hardship but grows with every passing day, birth-death is a part of the life cycle. Keeping a piece on the wall will amplify the harmony and balance of mind. A danish approach of color and form. Make your wall better, soothing with the

hues. You can use a set of these series to add more ornamentation to the wall. **Care:** A soft cloth is enough to wipe the surface and keep the painting dirt free.



Green tree Tasar Painting 20 x 42 in

[Read More](#)

SKU: 00980

Price: ₹41,440.00 inc. GST

Stock: instock

Categories: [Pattachitra Paintings](#), [Wall Decor](#)

Tags: [pattachitra art](#), [pattachitra painting](#), [pattachitra paintings](#), [tasar leaves painting](#), [tasar tree painting](#)

Product Description

Material: Tassar painting

Dimension(W:H:L): 42:20 inches

Description: Green tree Tasar Painting 20 x 42 in. This art offers a rich and artisanal appeal well suited to modern conventional decor with a twist of tradition. Sophisticated and timeless appeal with gentle ambient.

The fascinating ancient art of Odisha "Pattachitra". Depicts Hindu mythological tales and folks along with nature, animals, and flowers through rich colors, creative motifs, and unique designs. A fine display of craftsmanship at its best. One common element found in every Pattachitra is the flower border give a sameness to the entire painting.

The colors used in the painting are purely made from natural ingredients. The white color extract from seashells was powdered soaked to make the white paste. The color green is made from the green leaf and green stones. Red is made from a local stone called Hingula. Another stone named Khandaneela was used to extract the color blue. The yellow is made from, stone named Hartal. Black is extracted by burnt coconut shell. These five colors are also called

Pancha Tatwa. Every color has its significance, as the white illustrates Laughter (Hasya), Red stands furious, astonishment in yellow, The hair of the mouse and Buffalo used to make brushes and tied to the end of a bamboo stick. The floral border makes the art astonishingly beautiful.

A tree has many symbols to interconnect with human life. Just like branches strengthen with time and grow upward, human life also acquires, knowledge and experience as move through life. The deep-rooted in the earth and branches reach outward to the sky, it represents stability and growth. A tree symbolizes fertility, finds a way of growing through a seed, it signifies the vitality of a person. The branches sprouting in different directions symbolize human learning and shaping himself with different experiences. In his life cycle a tree losses its leaves in winter and flourish new fresh leaves again in the spring likewise a human also experiences darkness and light, death, birth, a fresh start in his life cycle.

Hanging a tree wall painting brings peacefulness and relaxation. A sense of calm can rip from the art. The green uplifting aesthetic painting is sure to complement any decor. The soothing texture blends with the background and stands subtle.

Care: Wipe the surface with a soft clot



Green-Purple tree Tasar Painting 20 x 41 in

[Read More](#)

SKU: 00979

Price: ₹39,200.00 inc. GST

Stock: instock

Categories: [Patachitra Paintings](#), [Wall Decor](#)

Tags: [patachitra art](#), [patachitra painting](#), [patachitra paintings](#), [tasar leaves painting](#), [tasar tree painting](#)

Product Description

Green-Purple tree Tasar Painting 20 x 41 inches. Feel the sense of hope and calm with a single glance at the painting " the tree of life". Your wall decor will bloom with these blue and green tree of life wall hanging.

Material: Tassar silk

Dimension(WH): 20 x 41.5 inch

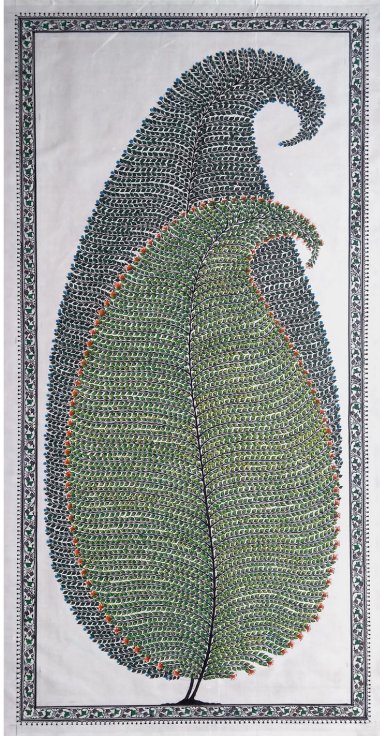
Pattachitra is a traditional Indian folk art from Odisha. characterize by hand engraving on cloths, with intricate patterns, designs, and motifs. Based on Hindu mythology and folks.

The colors used in the painting are purely made from natural ingredients. The white color extract from seashells was powdered soaked to make the white paste. The color green is made from the green leaf and green stones. Red is made from a local stone called Hingula. Another stone named Khandaneela was used to extract the color blue. The yellow is made from, stone named Hartal. Black is extracted by burnt coconut shell. These five colors are also called Pancha Tatwa. Every color has its significance, as the white illustrates Laughter (Hasya), Red stands furious, astonishment in yellow,

The hair of the mouse and Buffalo used to make brushes and tied to the end of a bamboo stick. The floral border makes the art astonishingly beautiful. A traditional lacquer coating is given to protect the painting's longevity.

The above art is a green and purple tree of life, the tree symbolizes growth, stability, beauty, and strength. The universal symbol of life. Use this piece to give your wall a touch of natural structure. Wall above the bed, sideboard, gallery, office, the decorative possibility for any space on your wall. You can even hang two or three each alongside the other.

Care: For dusting use a soft cloth to wipe the surface.



Dual Mood leaves Tasar Painting 20 x 41 in

[Read More](#)

SKU: 00977

Price: ₹48,160.00 inc. GST

Stock: outofstock

Categories: [Patachitra Paintings](#), [Wall Decor](#)

Tags: [patachitra art](#), [patachitra painting](#), [patachitra paintings](#), [tasar leaves painting](#), [tasar tree painting](#)

Product Description



Plum Color Tree Tasar Painting 21 x 41 in

[Read More](#)

SKU: 00978

Price: ₹44,800.00 inc. GST

Stock: outofstock

Categories: [Patachitra Paintings](#), [Wall Decor](#)

Tags: [patachitra art](#), [patachitra painting](#), [patachitra paintings](#), [tasar leaves painting](#), [tasar tree painting](#)

Product Description



Vamana Avatar of Dashavatara Painting

[Read More](#)

SKU: 00876

Price: ₹3,360.00 inc. GST

Stock: outofstock

Categories: [Patachitra Paintings](#), [Wall Decor](#)

Tags: [canvas painting](#), [kaliyadana story paintings](#), [patachitra art of odisha](#), [patachitra painting](#), [pattachitra painting](#), [vamana avatar painting](#), [wall hanging](#), [wall mount](#)

Product Description



Lord Vishnu Matsya Avatar Pattachitra Painting

[Read More](#)

SKU: 00877

Price: ₹3,472.00 inc. GST

Stock: outofstock

Categories: [Patachitra Paintings](#)

Tags: [canvas painting](#), [dashavatara painting](#), [matsya avatar painting](#), [patachitra art of odisha](#), [patachitra painting](#), [pattachitra painting](#), [wall hanging](#), [wall mount](#)

Product Description



Parshuram Avatar of Lord Vishnu Canvas Painting

[Read More](#)

SKU: 00878

Price: ₹3,360.00 inc. GST

Stock: outofstock

Categories: [Patachitra Paintings](#), [Wall Decor](#)

Tags: [canvas painting](#), [dashavatara painting](#), [parshuram avatar](#), [patachitra art of odisha](#), [patachitra painting](#), [pattachitra painting](#), [wall hanging](#), [wall mount](#)

Product Description



Balaram Avatar of Lord Vishnu Painting

[Read More](#)

SKU: 00879

Price: ₹3,360.00 inc. GST

Stock: outofstock

Categories: [Patachitra Paintings](#), [Wall Decor](#)

Tags: [balaram avatar painting](#), [canvas painting](#), [dashavatara painting](#), [patachitra art of odisha](#), [patachitra painting](#), [pattachitra painting](#), [wall hanging](#), [wall mount](#)

Product Description



Buddha Avatar of Lord Vishnu Pattachitra Painting

[Read More](#)

SKU: 00880

Price: ₹3,360.00 inc. GST

Stock: outofstock

Categories: [Patachitra Paintings](#), [Wall Decor](#)

Tags: [buddha avatar painting](#), [canvas painting](#), [dashavatara painting](#), [patachitra art of odisha](#), [patachitra painting](#), [pattachitra painting](#), [wall hanging](#), [wall mount](#)

Product Description



Rama Avatar of Lord Vishnu Pattachitra Painting

[Read More](#)

SKU: 00881

Price: ₹3,360.00 inc. GST

Stock: outofstock

Categories: [Patachitra Paintings](#), [Wall Decor](#)

Tags: [canvas painting](#), [dashavatara painting](#), [patachitra art of odisha](#), [patachitra painting](#), [pattachitra painting](#), [rama avatar](#), [wall hanging](#), [wall mount](#)

Product Description



Varaha Avatar of Dashavatara Pattachitra Painting

[Read More](#)

SKU: 00882

Price: ₹3,360.00 inc. GST

Stock: outofstock

Categories: [Patachitra Paintings](#), [Wall Decor](#)

Tags: [canvas painting](#), [dashavatara painting](#), [patachitra art of odisha](#), [patachitra painting](#), [pattachitra painting](#), [varaha avatar](#), [wall hanging](#), [wall mount](#)

Product Description



Kurma Avatar of Dashavatara Pattachitra Painting

[Read More](#)

SKU: 00883

Price: ₹3,472.00 inc. GST

Stock: outofstock

Categories: [Patachitra Paintings](#)

Tags: [canvas painting](#), [dashavatara painting](#), [kurma avatar](#), [patachitra art of odisha](#), [patachitra painting](#), [pattachitra painting](#), [wall hanging](#), [wall mount](#)

Product Description



Narasimha Avatar of Dashavatara Painting

[Read More](#)

SKU: 00884

Price: ₹3,360.00 inc. GST

Stock: outofstock

Categories: [Patachitra Paintings](#), [Wall Decor](#)

Tags: [canvas painting](#), [dashavatara painting](#), [narasimha avatar](#), [patachitra art of odisha](#), [patachitra painting](#), [pattachitra painting](#), [wall hanging](#), [wall mount](#)

Product Description



Lord Krishna Story Pattachitra Painting

[Read More](#)

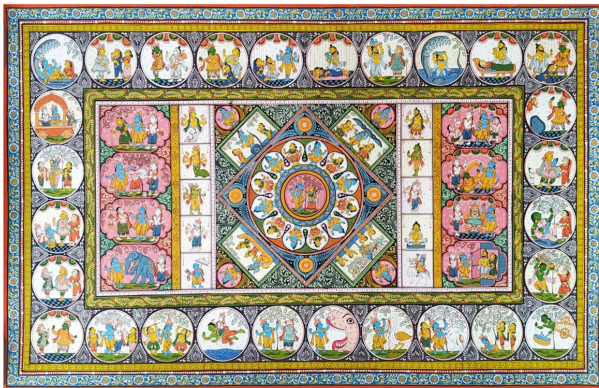
SKU: 00850

Price: ₹47,040.00 inc. GST

Stock: outofstock

Categories: [Patachitra Paintings](#), [Wall Decor](#)

Tags: [canvas painting](#), [lord krishna painting](#), [patachitra art of odisha](#), [patachitra painting](#), [pattachitra painting](#), [wall hanging](#), [wall mount](#)



Product Description

Description: Lord Krishna Story Pattachitra Painting. The symbol of immortal love brings a divine touch to your wall and peaks a thousand words through the art. **Material:** Canvas

Dimension(HW): 25x40 inch **Weight:** 0.2 kg Famous for an age-old tradition of painting, the land of Odisha. Pattchitra is the oldest form of fascinating artwork which depicts Hindu folk tales and mythological stories. Patta means cloth or canvas, Chitra means Picture, hence, Pattachitra is a picture painted on a piece of cloth. The Pattachitra here depicts the story of Lord Krishna, from his born on a moonless night while heavy Strome was approaching, guided by a divine voice his father Vasudev carried the infant on a rattan basket over his head, across the river Yamuna to the house of Nanda in Gokula protected from rains by the hood of a seven-headed serpent. At reaching Nanda's place he placed the child near Yashoda and carried their newborn girl back to his prison. The painting also illustrates his Leela in Gokul, with Gopala's and Gopi's. The Raas was with the Gopi's revolved around Krishna, as he played his flute near the banks of Yamuna. Depicts the legendary love for Radhe Krishna, meeting his childhood friend Sudama, killing Naraksura and Putana, laddu Gopal, lifting Gowardhan mountain, and his Vishwa Roopa. The painting has covered almost all the life of Lord Krishna, in juxtaposition. The center of the painting shows the soul seeking divine love of Shri Krishna with Radha, alongside the painting portrays The Dasaavatara of Lord Vishnu, These are Matsya (Satya Yuga), Kurma(Satya Yuga), Varaha(Satya Yuga), Narsimha(Satya Yuga), Vamana(Treta Yuga), Parshurama(Treta Yuga), Rama(Treta Yuga), Balarama(Dwapara Yuga), Krishna(Dwapara Yuga), and Kalki(Kali Yuga). The superb craftsmanship makes the piece a distinct one. The painting can be perfectly displayed on any wall, for its visual interest. Rich blue, mustard, and white hues finished with a traditional flower border give a little extra feature. **Care:** Wipe the canvas with a soft cloth or brush.
