



The Blue leaves Tasar Painting 20 x 40 in

[Read More](#)

SKU: 00976

Price: ₹48,160.00 inc. GST

Stock: outofstock

Categories: [Patachitra Paintings](#), [Wall Decor](#)

Tags: [handmade painting](#), [tasar leaves painting](#), [tasar painting](#), [tasar paintings](#), [tasar tree painting](#)

Product Description



Yagya Narayan Pattachitra Tasar Painting

[Read More](#)

SKU: 00838

Price: ₹29,120.00 inc. GST

Stock: instock

Categories: [Patachitra Paintings](#)

Tags: [canvas painting](#), [home décor](#), [interior designing](#), [lord vishnu painting](#), [odisha paintings](#), [patachitra art](#), [patachitra paintings](#), [tasar paintings](#), [wall decor](#), [yagya narayana paintings](#)

Product Description



Krishna Shiva Ekakaar Rup Pattachitra Painting

[Read More](#)

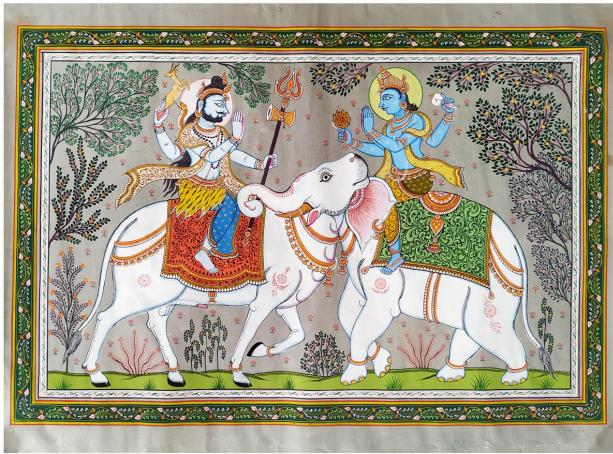
SKU: 00828

Price: ₹29,120.00 inc. GST

Stock: outofstock

Categories: [Patachitra Paintings](#)

Tags: [canvas painting](#), [home décor](#), [interior designing](#), [lord krishna painting](#), [lord shiva painting](#), [odisha paintings](#), [pattachitra art](#), [pattachitra paintings](#), [tasar paintings](#), [wall decor](#)



Product Description

Krishna Shiva Ekakaar Rup Pattachitra Painting. A bold and eye-catching artwork, just one piece can transform the wall into an appealing one. Create a divine moment with the enthralling art.

Material: Tasar fabric

Dimension(WH): 30 x 20 inch

Weight: 0.1 kg

The museum of ancient art and temples. Odisha is the hub of Pattachitra arts, a unique way of displaying mythology and classical folk elements in a cloth with various motifs, designs, and patterns.

The colors used in the painting are purely made from natural ingredients. The white color extract from seashells was powdered soaked to make the white paste. The color green is made from the green leaf and green stones. Red is made from a local stone called Hingula. Another stone named Khandaneela was used to extract the color blue. The yellow is made from, stone named Hartal. Black is extracted by burnt coconut shell. These five colors are also called Pancha Tatwa. Every color has its own significance, as the white illustrates Laughter (Hasya), Red stands furious, astonishment in yellow,

The hair of the mouse and Buffalo used to make brushes and tied to the end of a bamboo stick.

The floral border makes the art astonishingly beautiful.

Mahadev is known as the destroyer and Krishna is known for preserving. Lord Mahadev symbolizes anger and the utmost power of decision-making. Krishna the preserver portrayed as blue-skinned, takes incarnation whenever the earth needs a balance of good over bad. Krishna is the eighth incarnation of Lord Bishnu.

This picture has a unique portrayal of art, on one side if you look at it will look like a bull, while on another side if you look at it looks like an elephant. One can get blessed by keeping photos of the duo, it enhances self-confidence and clear vision.

Able to clear the obstacle and leads you to progress steadily in life. Bring calmness, peace, and harmony to your life with their picture.

Care: It's extremely easy to clean, use a soft cloth to wipe the picture.



Beautiful Village Painting Patachitra

[Read More](#)

SKU: 01784

Price: Call for price

Stock: instock

Categories: [Patachitra Paintings](#), [Wall Decor](#)

Product Description

Finding the right living room painting can be a tricky prospect, with sizing just as important as style, not to be worried, CRAFTS ODISHA is here to serve you the beautiful Village Painting Patachitra, a timeless piece sure to give any living room just the right hint of sophisticated formality. **Material:** Tasar fabric **Dimension (HWL):** **Weight:** **Frame:** With frame **Illustration:**

- The artifact described here is a unique Decorative Beautiful Village Painting Patachitra.
- The art piece is well-painted with multiple colors, making it strikingly beautiful.
- The depth of the artisan-made craft decoration is stunning, and the varied masterpieces are ravishing and amazing to make you fall for it.
- The skillful articulation over the Patachitra has depicted the life of tribal people and their customs.
- The Patachitra paintings are formed on a special canvas where Tasar clothes are layered with a tamarind paste and then coated with clay powder.

Decorative tips for the Tribal Life Village Painting:

- A series of framed Village Painting is such a natural fit for a gallery wall.
- A blank wall makes the artwork pop even more with the Tribal Life painting.
- Cover the blank space surrounding the door with a frame Patachitra Painting.
- Go crazy with Village Painting wall deco on your living room wall.
- The room gets well, and great and has an earthy touch with the Tribal Life Patachitra Painting.
- The Village Painting brings a sense of authority and seems to put things into perspective.
- With a little planning, this can be your favorite part of the house where you display your Patachitra Painting.
- The wall of the staircase serves multiple purposes, highlights your favorite piece of art, and gives you a chance to get creative.
- A great way to add your personal touch and cover a wide space is by getting your favorite piece of art hung on the wall.

How to buff the Village Patachitra Painting:

- With our effortless caring information, your art decoration will have a long life and look as beautiful as the first day.
 - Buffing the Patachitra Painting with a cloth(dry), from time to time is sufficient to keep its appearance shiny.
-



Black leaves Jumbo tree Tasar Painting 20 x 46 in

[Read More](#)

SKU: 00986

Price: ₹43,680.00 inc. GST

Stock: instock

Categories: [Patachitra Paintings](#), [Wall Decor](#)

Tags: [patachitra art](#), [patachitra painting](#), [patachitra paintings](#), [tasar leaves painting](#), [tasar tree painting](#)

Product Description

Dimension: Black leaves Jumbo tree Tasar Painting 20 x 46 inches. It depicts the nature perfect harmony and strength of life. This piece keeps things simple and modern in a classical manner. A unique piece sure to lay eyes on. **Material:** Tasar fabric. **Dimension(HW):** 46x20 inch Patachitra is one of the oldest and popular arts of Odisha. Most themes are based on Hindu mythology, folk tales, animals, tree of nature, flowers. A quite simple display of art in an intricate way of creativity. The rich use of colors, unique portrayal of motifs, and simple design with flower borders can be strongly visualized. The colors used in the painting are purely made from natural ingredients. The white color extract from seashells was powdered soaked to make the white paste. The color green is made from the green leaf and green stones. Red is made from a local stone called Hingula. Another stone named Khandaneela was used to extract the color blue. The yellow is made from, stone named Hartal. Black is extracted by burnt coconut shell. These five colors are also called Pancha Tatwa. Every color has its own significance, as the white illustrates Laughter (Hasya), Red stands furious, astonishment in yellow. The hair of the mouse and Buffalo used to make brushes and tied to the end of a bamboo stick. The floral border makes the art astonishingly beautiful. The above painting of the jumbo tree that branches outward to the sky, represents the interrelatedness of all things in nature. A message conveying us to grow and flourish. Like the life cycle of a tree, losing its leaves then blossom more greenish with every coming season our life also experiences darkness, light, death, rebirth. So it symbolizes positive energy, fertility, and new beginnings. Use this painting on the wall of your gallery, office, Above the bed, you can hang two or more alongside each for a

sophisticated look. **Care:** Wipe the surface with a soft cloth.



Light green tree Tasar Painting 19 x 45 in

[Read More](#)

SKU: 00985

Price: ₹43,680.00 inc. GST

Stock: instock

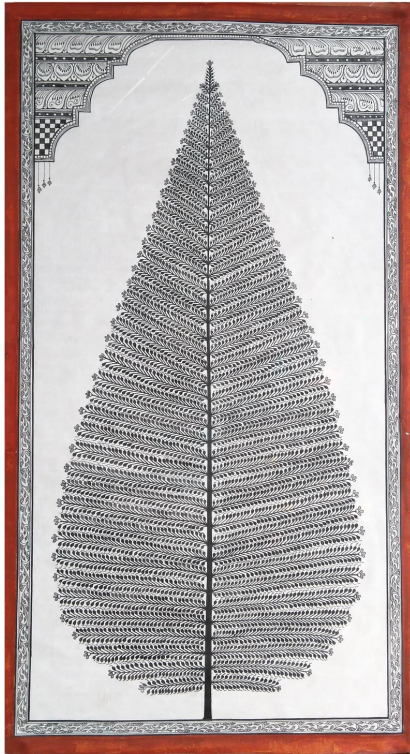
Categories: [Patachitra Paintings](#), [Wall Decor](#)

Product Description

Description: Light green tree Tasar Painting 19 x 45 inches. Complement a diverse variety of wall decor. A charming mix of patterns gives an attractive sense of balance to any space.

Material: Tassar Silk **Dimension(HW):** 45.5x19.5 inch Odisha is the land of art and culture. Usually, Pattachitra is portrayed as the tale of mythology and folks. Other themes based also included. Nature-based Pattachitra Tree of life, birds, animals, etc. The colors used in the painting are purely made from natural ingredients. The white color extract from seashells was powdered soaked to make the white paste. The color green is made from the green leaf and green stones. Red is made from a local stone called Hingula. Another stone named Khandaneela was used to extract the color blue. The yellow is made from, stone named Hartal. Black is extracted by burnt coconut shell. These five colors are also called Pancha Tatwa. Every color has its own significance, as the white illustrates Laughter (Hasya), Red stands furious, astonishment in yellow, The hair of the mouse and Buffalo used to make brushes and tied to the end of a bamboo stick. The floral border makes the art astonishingly beautiful. The above Pattachitra is said to be nature-based. A spectacular art of a green tree. It keeps the wall simple and modern with the touch of local art. Give your wall a little extra ambiance. Makes the perfect use above the bed, gallery, hallway, office, you can make a twin or three pieces alongside each.

Care: Use a soft cloth to dust the painting.



Black leaves tree Tasar Painting 21 x 40 in

[Read More](#)

SKU: 00984

Price: ₹39,200.00 inc. GST

Stock: instock

Categories: [Pattachitra Paintings](#), [Wall Decor](#)

Tags: [pattachitra art](#), [pattachitra painting](#), [pattachitra paintings](#), [tasar leaves painting](#), [tasar tree painting](#)

Product Description

Black leaves tree Tasar Painting 21 x 40 inch. An eco-friendly painting to amplify your wall anywhere in your home/office. Timeless beauty showcasing nature to be paired with your desired frame.

Material: Tassar silk

Dimension(W: H:L):39.5: 21

Chitra was painted on Patta, known as Pattachitra, as a religious offering to temples. These paintings showed mythological stories and life events of gods and goddesses. It also contained themes like nature, flowers, and animals.

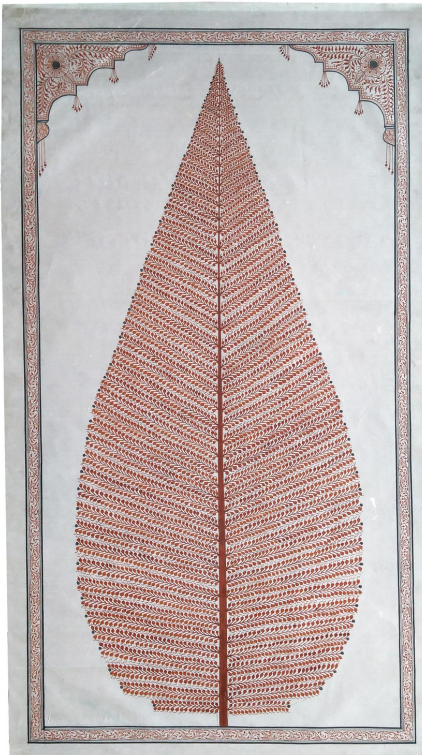
The colors used in the painting are purely made from natural ingredients. The white color extract from seashells which were powdered and then soaked to make the white paste. The color green is made from the green leaf and green stones. Red is made from a local stone called Hingula. Another stone named Khandaneela was used to extract the color blue. The yellow is made from, stone named Hartal. Black is extracted by burnt coconut shell. These five colors are also called Pancha Tatwa. Every color has its significance, as the white illustrates Laughter (Hasya), Red stands furious, astonishment in yellow, The hair of the mouse and Buffalo used to make brushes and tied to the end of a bamboo stick. The floral border makes the art astonishingly beautiful.

Every picture has some signs of spirituality or religion. Above black leave tree painting, has many features from its root to branches, convey some important message for mankind. The root symbolizes stability, the branches symbolize growth.

The tree also symbolizes fertility, from its seed to sapling always finds a way to keep growing like a person's ability to live, grow and develop. Trees lose their leaves in winter and appeared new fresh leaves when spring approaches. Likewise, a human faces new begins, fresh starts, and death.

One can get a calming and relaxing feel from the tree. You can decor your wall with a single piece or make a set of three paintings to display over the bed or dresser or wall of your desired option. You can play with different arrangements for the decor in ziczac.

Care: Use cotton cloth t for dusting.



Dark-Red tree Tasar Painting 21 x 40 in

[Read More](#)

SKU: 00983

Price: ₹39,200.00 inc. GST

Stock: instock

Categories: [Patachitra Paintings](#), [Wall Decor](#)

Tags: [patachitra art](#), [patachitra painting](#), [patachitra paintings](#), [tasar leaves painting](#), [tasar tree painting](#)

Product Description

Dark-Red tree Tasar Painting 21 x 40 inches. Pair with your favorite frame, for endless decor possibilities on the wall. A vignette statement piece with a balanced visual experience.

Material: Tasar fabric

Dimension(W: H:L): 39.5: 21 inches

Patta means canvas, Chitra means picture. Pattachitra art is the most popular ancient art form of Odisha. It portrays simple themes through creative motives and unique designs. The themes are based generally on mythology, folk tales, nature, animals, and flowers. The rich color and display of art touch human emotion directly.

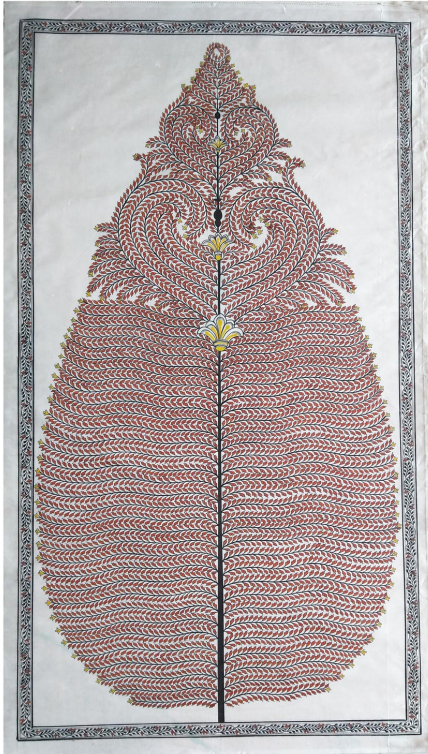
The colors used in the painting are purely made from natural ingredients. The white color extract from seashells was powdered soaked to make the white paste. The color green is made from the green leaf and green stones. Red is made from a local stone called Hingula. Another stone named Khandaneela was used to extract the color blue. The yellow is made from, stone named Hartal. Black is extracted by burnt coconut shell. These five colors are also called Pancha Tatwa. Every color has its own significance, as the white illustrates Laughter (Hasya), Red stands furious, astonishment in yellow, The hair of the mouse and Buffalo used to make brushes and tied to the end of a bamboo stick. The floral border makes the art astonishingly beautiful.

The tree symbolizes stability (the deep-rooted) and growth(the upward branches). A tree grows in the harshest condition, flood, heat, cold but withstanding in every condition likewise a human in a cycle of life faces many difficult situation but should stand with adapting challenges. Trees represent duality between life and death, like it, losses leaves in a season and blossoms new fresh leaves in another new season, human also faces darkness and light, birth and death in their life cycle. ita a symbol of growth and development I, likewise human too learn to grow and develop knowledge with experience.

Hangover the wall of the bed, dresser, hallway, office. Make a twin or triplet of the same art on the wall for stylish ambient.

Something with a more casual look rooted to traditional.

Care: Use a soft cloth to wipe the surface, to keep it dust-free.



Rose-Gold Tree Tasar Painting 22 x 40 in

[Read More](#)

SKU: 00982

Price: ₹41,440.00 inc. GST

Stock: instock

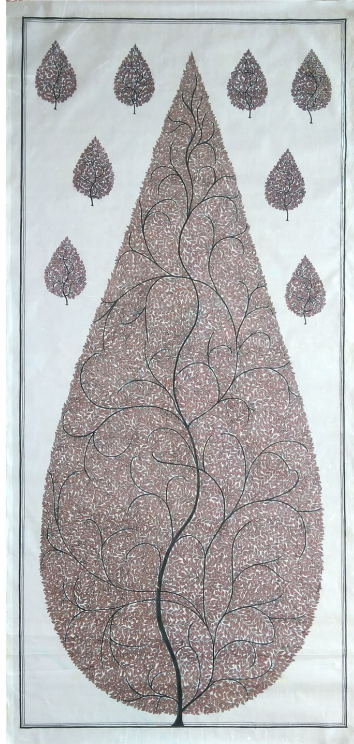
Categories: [Patachitra Paintings](#), [Wall Decor](#)

Tags: [pattachitra art](#), [pattachitra painting](#), [pattachitra paintings](#), [tasar leaves painting](#), [tasar tree painting](#)

Product Description

Description: Rose-Gold Tree Tasar Painting 22 x 40 inches. The artistic paint offers the timeless beauty of nature for any wall. Stylish ambient provides sophisticated aesthetics.

Material: Tasar fabric **Dimension(HW):** 40.5x22 inch A scroll cloth painting named Pattachitra from Odisha is quite popular for its unique patterns, design, and motifs to depict mythological and folk tales from ancient Hindu scriptures. The painting on the cloth is "Pattachitra". The colors used in the painting are purely made from natural ingredients. The white color extract from seashells was powdered soaked to make the white paste. The color green is made from the green leaf and green stones. Red is made from a local stone called Hingula. Another stone named Khandaneela was used to extract the color blue. The yellow is made from, stone named Hartal. Black is extracted by burnt coconut shell. These five colors are also called Pancha Tatwa. Every color has its own significance, as the white illustrates Laughter (Hasya), Red stands furious, astonishment in yellow. The hair of the mouse and Buffalo used to make brushes and tied to the end of a bamboo stick. The floral border makes the art astonishingly beautiful. The above Pattachitra is a piece of rose gold tree painting, a masterpiece of art done by using only minimal colors, simple and elegant to eyes upon. Use it above the bed, sideboards, or wall anywhere in the home, office, gallery. You can opt to hang two-three alongside each with a delightful feeling of the series. **Care:** Use a soft cloth to dust the painting.



Eggplant color tree Tasar Painting 20 x 42 in

[Read More](#)

SKU: 00981

Price: ₹41,440.00 inc. GST

Stock: instock

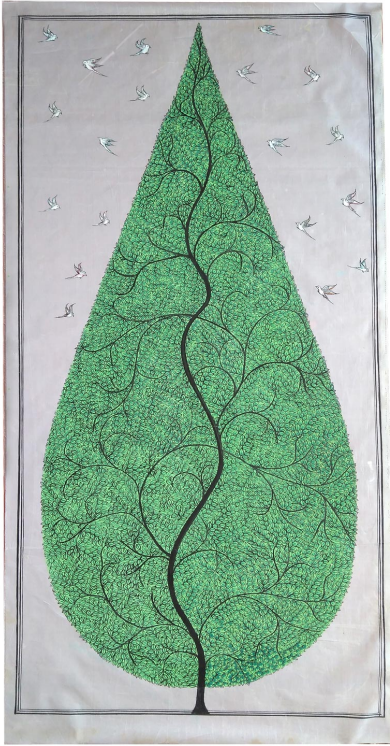
Categories: [Patachitra Paintings](#), [Wall Decor](#)

Tags: [pattachitra art](#), [pattachitra painting](#), [pattachitra paintings](#), [tasar leaves painting](#), [tasar tree painting](#)

Product Description

Eggplant color tree Tasar Painting 20 x 42 in. Nature-inspired classical touch with contemporary design and delightful approach on the wall with minimal color. The famous art of Odisha, Patachitra. An expressive mythological tale of emotion, display through the pattern, motifs, and design. A true reflection of ancient art through sheer grace. The colors used in the painting are purely made from natural ingredients. The white color extract from seashells was powdered soaked to make the white paste. The color green is made from the green leaf and green stones. Red is made from a local stone called Hingula. Another stone named Khandaneela was used to extract the color blue. The yellow is made from, stone named Hartal. Black is extracted by burnt coconut shell. These five colors are also called Pancha Tatwa. Every color has its own significance, as the white illustrates Laughter (Hasya), Red stands furious, astonishment in yellow. The hair of the mouse and Buffalo used to make brushes and tied to the end of a bamboo stick. The floral border makes the art astonishingly beautiful. The trees branches are reaching up to the sky, which symbolizes growth and the deep roots into the soil symbolize stabilization. The tree symbolizes fertility, never stopping growing likewise men should gain knowledge and experience throughout their lifetime. Branches sprouting of different points and different direction symbolize a person's different experiences shape them into who they are. Like a tree in his life cycle losses its leaves in winter and appear new leaves again in spring, conveying a message that a human also faces hardship but grows with every passing day, birth-death is a part of the life cycle. Keeping a piece on the wall will amplify the harmony and balance of mind. A danish approach of color and form. Make your wall better, soothing with the

hues. You can use a set of these series to add more ornamentation to the wall. **Care:** A soft cloth is enough to wipe the surface and keep the painting dirt free.



Green tree Tasar Painting 20 x 42 in

[Read More](#)

SKU: 00980

Price: ₹41,440.00 inc. GST

Stock: instock

Categories: [Pattachitra Paintings](#), [Wall Decor](#)

Tags: [pattachitra art](#), [pattachitra painting](#), [pattachitra paintings](#), [tasar leaves painting](#), [tasar tree painting](#)

Product Description

Material: Tassar painting

Dimension(W:H:L): 42:20 inches

Description: Green tree Tasar Painting 20 x 42 in. This art offers a rich and artisanal appeal well suited to modern conventional decor with a twist of tradition. Sophisticated and timeless appeal with gentle ambient.

The fascinating ancient art of Odisha "Pattachitra". Depicts Hindu mythological tales and folks along with nature, animals, and flowers through rich colors, creative motifs, and unique designs. A fine display of craftsmanship at its best. One common element found in every Pattachitra is the flower border give a sameness to the entire painting.

The colors used in the painting are purely made from natural ingredients. The white color extract from seashells was powdered soaked to make the white paste. The color green is made from the green leaf and green stones. Red is made from a local stone called Hingula. Another stone named Khandaneela was used to extract the color blue. The yellow is made from, stone named Hartal. Black is extracted by burnt coconut shell. These five colors are also called

Pancha Tatwa. Every color has its significance, as the white illustrates Laughter (Hasya), Red stands furious, astonishment in yellow, The hair of the mouse and Buffalo used to make brushes and tied to the end of a bamboo stick. The floral border makes the art astonishingly beautiful.

A tree has many symbols to interconnect with human life. Just like branches strengthen with time and grow upward, human life also acquires, knowledge and experience as move through life. The deep-rooted in the earth and branches reach outward to the sky, it represents stability and growth. A tree symbolizes fertility, finds a way of growing through a seed, it signifies the vitality of a person. The branches sprouting in different directions symbolize human learning and shaping himself with different experiences. In his life cycle a tree losses its leaves in winter and flourish new fresh leaves again in the spring likewise a human also experiences darkness and light, death, birth, a fresh start in his life cycle.

Hanging a tree wall painting brings peacefulness and relaxation. A sense of calm can rip from the art. The green uplifting aesthetic painting is sure to complement any decor. The soothing texture blends with the background and stands subtle.

Care: Wipe the surface with a soft clot



Green-Purple tree Tasar Painting 20 x 41 in

[Read More](#)

SKU: 00979

Price: ₹39,200.00 inc. GST

Stock: instock

Categories: [Patachitra Paintings](#), [Wall Decor](#)

Tags: [patachitra art](#), [patachitra painting](#), [patachitra paintings](#), [tasar leaves painting](#), [tasar tree painting](#)

Product Description

Green-Purple tree Tasar Painting 20 x 41 inches. Feel the sense of hope and calm with a single glance at the painting " the tree of life". Your wall decor will bloom with these blue and green tree of life wall hanging.

Material: Tassar silk

Dimension(WH): 20 x 41.5 inch

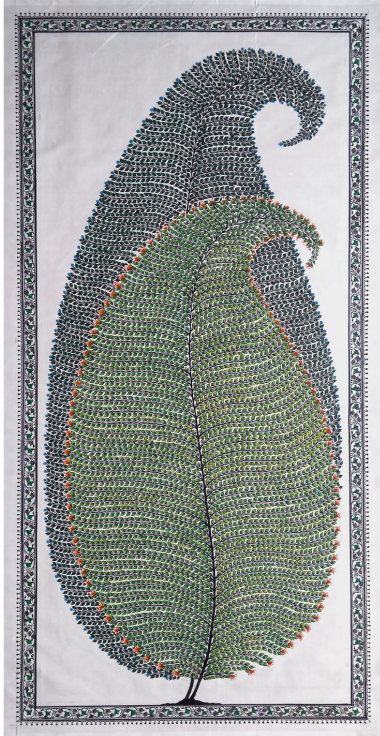
Pattachitra is a traditional Indian folk art from Odisha. characterize by hand engraving on cloths, with intricate patterns, designs, and motifs. Based on Hindu mythology and folks.

The colors used in the painting are purely made from natural ingredients. The white color extract from seashells was powdered soaked to make the white paste. The color green is made from the green leaf and green stones. Red is made from a local stone called Hingula. Another stone named Khandaneela was used to extract the color blue. The yellow is made from, stone named Hartal. Black is extracted by burnt coconut shell. These five colors are also called Pancha Tatwa. Every color has its significance, as the white illustrates Laughter (Hasya), Red stands furious, astonishment in yellow,

The hair of the mouse and Buffalo used to make brushes and tied to the end of a bamboo stick. The floral border makes the art astonishingly beautiful. A traditional lacquer coating is given to protect the painting's longevity.

The above art is a green and purple tree of life, the tree symbolizes growth, stability, beauty, and strength. The universal symbol of life. Use this piece to give your wall a touch of natural structure. Wall above the bed, sideboard, gallery, office, the decorative possibility for any space on your wall. You can even hang two or three each alongside the other.

Care: For dusting use a soft cloth to wipe the surface.



Dual Mood leaves Tasar Painting 20 x 41 in

[Read More](#)

SKU: 00977

Price: ₹48,160.00 inc. GST

Stock: outofstock

Categories: [Patachitra Paintings](#), [Wall Decor](#)

Tags: [patachitra art](#), [patachitra painting](#), [patachitra paintings](#), [tasar leaves painting](#), [tasar tree painting](#)

Product Description



Plum Color Tree Tasar Painting 21 x 41 in

[Read More](#)

SKU: 00978

Price: ₹44,800.00 inc. GST

Stock: outofstock

Categories: [Patachitra Paintings](#), [Wall Decor](#)

Tags: [patachitra art](#), [patachitra painting](#), [patachitra paintings](#), [tasar leaves painting](#), [tasar tree painting](#)

Product Description



Suna Besha of Lord Jagannath Tasar Painting

[Read More](#)

SKU: 00836

Price: ₹25,760.00 inc. GST

Stock: outofstock

Categories: [Patachitra Paintings](#)

Tags: [canvas painting](#), [home décor](#), [interior designing](#), [jagannath jiu painting](#), [lord jagannath painting](#), [odisha paintings](#), [patachitra art](#), [patachitra paintings](#), [puri jagannath paintings](#), [suna besha paintings](#), [tasar paintings](#), [wall decor](#)



Product Description



Lord Krishna Kaliya Dalan Story Tasar Painting

[Read More](#)

SKU: 00837

Price: ₹29,120.00 inc. GST

Stock: outofstock

Categories: [Patachitra Paintings](#)

Tags: [canvas painting](#), [home décor](#), [interior designing](#), [kaliyadana story paintings](#), [lord krishna painting](#), [odisha paintings](#), [patachitra art](#), [patachitra paintings](#), [tasar paintings](#), [wall decor](#)



Product Description



Lord Jagannath Chitalagi Besha Tasar Painting



[Read More](#)

SKU: 00839

Price: ₹29,120.00 inc. GST

Stock: outofstock

Categories: [Patachitra Paintings](#)

Tags: [canvas painting](#), [home décor](#), [interior designing](#), [jagannath jiu painting](#), [lord jagannath painting](#), [odisha paintings](#), [pattachitra art](#), [pattachitra paintings](#), [puri jagannath paintings](#), [tasar paintings](#), [wall decor](#)

Product Description

Lord Jagannath Chitalagi Besha Tasar Painting. The vibrant colors create the look and show the artist's masterpiece. A beautiful traditional touch to your wall.

Material: Tasar fabric.

Dimension(HW): 20 x 29 inch

Weight: 0.1 kg

Odisha, Jagannath temple is one of the Char Dham for pilgrims sites in India. The state is also renowned for its ancient handicrafts heritage. Pattachitra is one of the oldest artwork of Odisha. Depicts the Hindu mythological and folk tales.

Patta means canvas and Chitra means painting.

Lord Jagannath have 32 Besha. Here Besha means attire, dress, or adornment. Deities from many temples are dressed and decorated in many manners. In Jagannath puri also the trinity dressed with usual to occasional ornamentation according to the festival and tithi. Every day from the Mangala aarti to Ratri pahuda the deities get dressed with every pahuda. When there is a special occasion in a special festival the deities get a special Besha. Like Chitalagi Amavasya it falls on the new moon day of Shrawana month known as Chateau Amavasya. A special ritual is observed on this day. The forehead of the three gods is embellished with a

Chita. The word Chita means ornamentation of the forehead with materials like bezoar, sandalwood, musk. But in Jagannath temple puri, the Chita is made from gold, diamond, emerald, sapphire, ruby. The Sevak adorn the deities with the Chita on the day of Shravana Amavasya. The Chita is also removed from the head in the Snana Purnima in which the three siblings visit Gundicha temple for nine days and again put it in the Shravana month.

A special pudding made from rice called "Chateau Pitha" was offered to the deities. The Chateau Amavasya festival is also celebrated as an agricultural festival of the farmers. This day's farmers go to their peddy fields and pray to yield good crops.

You can give your wall a unique fine art display, with a spiritual appeal. The fascinating painting would amplify the wall ornamentation with wonders. You can opt to hang the painting at your living, study, library, office, gallery, etc.

Care: Use a dry soft brush to clean the painting, gently wipe the surface.



Radha Krishna Jugala Rasa Tasar Painting

[Read More](#)

SKU: 00840

Price: ₹28,560.00 inc. GST

Stock: instock

Categories: [Patachitra Paintings](#)

Tags: [canvas painting](#), [home décor](#), [interior designing](#), [lord krishna painting](#), [odisha paintings](#), [pattachitra art](#), [pattachitra paintings](#), [radha krishna painting](#), [tasar paintings](#), [wall decor](#)

Product Description



Kaliyadalana Story of Lord Krishna Tasar Painting

[Read More](#)

SKU: 00841

Price: ₹33,600.00 inc. GST

Stock: outofstock

Categories: [Patachitra Paintings](#)

Tags: [canvas painting](#), [home décor](#), [interior designing](#), [kaliyadana story paintings](#), [lord krishna painting](#), [odisha paintings](#), [patachitra art](#), [patachitra paintings](#), [tasar paintings](#), [wall decor](#)

Product Description



Lord Jagannath Ghodalagi Besha Tasar Painting

[Read More](#)

SKU: 00842

Price: ₹29,120.00 inc. GST

Stock: outofstock

Categories: [Patachitra Paintings](#)

Tags: [canvas painting](#), [home décor](#), [interior designing](#), [jagannath jiu painting](#), [lord jagannath painting](#), [odisha paintings](#), [patachitra art](#), [patachitra paintings](#), [puri jagannath paintings](#), [tasar paintings](#), [wall decor](#)

Product Description

Lord Jagannath Ghodalagi Besha Tasar Painting. A unique spiritual illustration. Generate a warm feeling from a single glance.

Material: Tasar fabrics

Dimension(HW): 20 x 30 inch

Weight: 0.1 kg

No wonder Odisha has the holy pilgrims from the Char Dham, one of the Dham is the Shrikhetra Puri. Where the worldwide famous cart festival performed. Full of cultural heritage the land of handicrafts. Pattachitra is one of the oldest and most popular living art forms of ancient times. The Pattachitra painting is a mythological and folk story inscribed in it. comprises of stories from Lord Jagannath and Vaishnava religion.

Lord Jagannatha with his siblings has many Besha, during the day. The Besha here means the attire and embellishments. There is different occasion and festival where deities dress up and decorate according to the festival. Ghodalagi Besha is one of his Besha from the 32 Besha.

In winter like everyone feels cold, the deities of Jagannath temple also feel the cold for which he adorns The Ghodalagi Besha. From the sixth day of the bright fortnight of Margsira Month to the fifth day of the bright fortnight at Magha, deities wear winter clothes. In Odiya Margasira Shukla Sasthitithi to Magha Shukla Panchami or known as Basanta Panchami the lords are covered with heavy blankets. Specially designed winter dresses are stored in the Ratna Singhsana. The entire body barring his face is covered in blankets and with headgear made of cotton and wool. The color is changed with each day, as per the temple almanac. Grey for Monday, Tuesday is a mixture of five different colors, blue for Wednesday, yellow for Thursday, white for Friday, black for Saturday, and red for Sunday. The ritual is known as "Odhana Sasthi" and continues till Basanta Panchami.

For the natural colors used in the canvas, the paintings have a soft glow that lasts forever. It's a unique and charming form of deity, to adore your walls. Hang it on walls of living, dining, Bedroom, hotel, cottage, etc.

Care: Gently wipe the surface with a soft cloth or brush



Chitalagi Besha of Puri Jagannath Tasar Painting



[Read More](#)

SKU: 00843

Price: ₹29,120.00 inc. GST

Stock: outofstock

Categories: [Patachitra Paintings](#)

Tags: [canvas painting](#), [home décor](#), [interior designing](#), [jagannath jiu painting](#), [lord jagannath painting](#), [odisha paintings](#), [pattachitra art](#), [pattachitra paintings](#), [puri jagannath paintings](#), [tasar paintings](#), [wall decor](#)

Product Description

Chitalagi Besha of Puri Jagannath Tasar Painting. A joy to contemplate even without any context.

Material: Tasar fabric

Dimension(HW): 20 x 30 inch

Weight: 0.1 kg

Odisha is famous for, world-famous Jagannath temple, puri. One Dhamas out of the four Dhamas is known as the Purushottama Khestra and the land of handicrafts. Pattachitra art is one of the oldest forms of artwork found in Odisha. "Patta" means canvas "Chitra" means painting, the painting is based on Hindu mythology and folk tales.

In Odiya and Sanskrit, the Besha is described as a dress or embellishing. In Jagannath temple, the three deities are embellished with different Bashas throughout the year. There are also many festivals where the deities get special ornamentation according to the festival.

Chitalagi Besha is one Besha from the 32 Besha of Shri jiu. Observed in Chateau Amavasya every year in Shri mandir. Falls in the new moon day of Shravana month. On this day a special ritual performs in the Shri mandir. It is observed on the new moon day of the Shravana month. A special ritual is performed on this occasion. The forehead of the deities is adorned with a

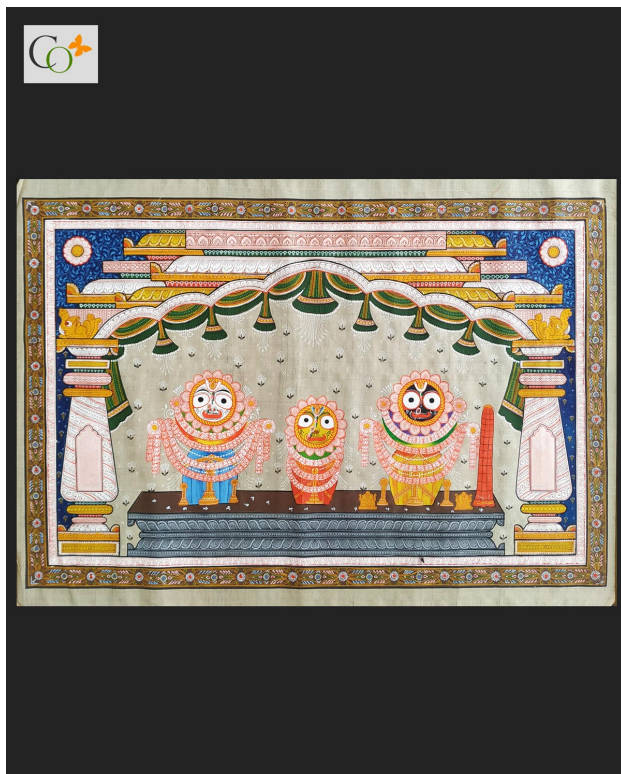
Chita. The word Chita means ornamentation of the forehead from different materials like sandalwood, bezoar, musk

But in puri Shri mandir the Chita is made from gold, diamond, sapphire, emerald, and ruby. The Chita is taken out from the head only in the Snana Purnima when the trinity goes to the Gundicha temple for nine days, and again it is put on the forehead in Shravan month.

A special rice pudding made from rice called "Chateau Pitha" is being offered to the deities. The Chateau Amavasya is celebrated through the state as an agricultural festival of the farmer. On this day the farmer worships his peddy field and prays to yield a good crop.

A spiritual captivated view in your wall decor, with minimal color coordination pop up, whenever it is placed in the home, office, gallery, or any desired area you want to decorate.

Care: Use a soft brush or cloth to dust the painting.



Padma Besha of Lord Jagannath Tasar Painting

[Read More](#)

SKU: 00844

Price: ₹29,120.00 inc. GST

Stock: outofstock

Categories: [Patachitra Paintings](#)

Tags: [canvas painting](#), [home décor](#), [interior designing](#), [jagannath jiu painting](#), [lord jagannath painting](#), [odisha paintings](#), [pattachitra art](#), [pattachitra paintings](#), [puri jagannath paintings](#), [tasar paintings](#), [wall decor](#)

Product Description

Padma Besha of Lord Jagannath Tasar Painting. Energetic colors with the striking appearance of Lord Jagannatha compliment the artwork of the artisan.

Material: Tasar silk fabric

Dimension(HW): 20x 30 inch

Weight: 0.1 kg

The incredible Odisha, Land of the fourth Dhaam. Where the world-famous Lord Jagannath temple is situated. Also the land of diverse, vibrant handicrafts and its cultural heritage. Pattachitra is one of the oldest artwork and rooted in faith with Hindu god and goddess and their mythological and folk stories depicted in the canvas with natural colors.

Padma Bhesa of Lord Jagannatha was observed on the new moon day of Magha and Basanta Panchami. Is the day which goddess Saraswati the provider of education is worshiped. The Padma means The lotus and the flower that appeared from this month onward. The dress material of this Besha is made out of the Lotus flower, (it is specifically provided by the Badachhata matha of puri). There is a story behind this Besha, long ago there is a devotee named Manohar das who was willing to offer Lotus flower, so when he started his journey to the trinity he collect many lotus flowers and tied in his Gamucha (towel), When he opened the towel after reaching the temple he found out some flowers have dried up and some got rotten. Seeing this the Sevaka of the temple thrashed him for offering rotten flowers to the god. Later the King Gajapati of Puri saw a dream where Lord Jagannath asked him to call Manohar das and offer those flowers to him. To which Manohar das was taken back to the deity offered that lotus from his towel to Lord, and to his surprise, the flowers became fresh again added with fragrance.

To remind his bhakti bhava (devotion), the lords are embellished by Padma Besha. Deities are decorated with Mukhapadma, Kundala, Tahia, Chita, Kundala, Swans, Chakra, Sankha are prepared from thermocol. A special pudding called Padma Khiri is offered on this day with a special type of rice called Padmakeshari.

The painting serves the saintliness and piety of the viewer. As well as decore the wall with the touch of godliness. You can hang it in any room, gallery, study, library, office, etc.

Care: Wiping with a cloth is enough.



Jagannath Jiu Raghunath Besha Tasar Painting

[Read More](#)

SKU: 00845

Price: ₹29,120.00 inc. GST

Stock: outofstock

Categories: [Patachitra Paintings](#)

Tags: [canvas painting](#), [home décor](#), [interior designing](#), [jagannath jiu painting](#), [lord jagannath painting](#), [odisha paintings](#), [patachitra art](#), [patachitra paintings](#), [puri jagannath paintings](#), [tasar paintings](#), [wall decor](#)



Product Description

Jagannath Jiu Raghunath Besha Tasar Painting. Decorate your wall with amazing art prints. A perfect representation of divinity with elegance.

Material: Tusar Fabrics

Dimension (HW): 20 x 30 inch

Weight: 0.1 kg

Odisha is the land of Jagannath, also the land of ancient art form Patachitra. The painting reflects the mythological and folk tales inspired by Lord Jagannath and the Vaishnava sect.

Besha is a Sanskrit word that means dress or attire. The deities of Shri Jagannath temple in puri are adorned with many different ornamentations throughout the day, starting from mangal aarti to Ratri pahuda. The lord also dressed in different ornamentation on different occasions according to the nature of the festival. The Raghunatha Besha is generally held in the month of Baisakha. In this Besha Lord Jagannath facade as Lord Rama and Shri Balabhadra pretense as Laxmana, with Subhadra, Bharata, Shatrughan in Ratna Singhasana along with other figures like Hanuman, Bibhishana, Angada, Jamabana, Nala, Sushena, almost 32 different statues are placed on a thin plank of wood, attached to the Ratna Singhasana. A wooden platform temporarily made from Ratnasinghasana to the Kalahari Dwara looks like the courtroom of Lord Rama. Lord Jagannath pretense as Lord Rama in Veerasana pose adorns with many pieces of

jewelry like Bala, Hara, Baju and a Naka Dandi attached to the nose of the deities, holding a bow.

The floral borders are an important part of Pattachitra art. It distinguishes it from every other. The Tasar fabric gives long life to the artwork. The painting is like an ocean of bliss from the trinity.

Placement: The holiness of the painting is worth watching. Amplify any decor of the wall, like showering of blessing from the picture in the atmosphere. Suitable to place on any wall of the rooms like living, bedroom, study, gallery, office, etc.

Care: Wipe the surface with a cloth gently.



Lord Jagannath Suna Besha Tasar Painting

[Read More](#)

SKU: 00846

Price: ₹31,360.00 inc. GST

Stock: outofstock

Categories: [Patachitra Paintings](#)

Tags: [canvas painting](#), [home décor](#), [interior designing](#), [jagannath jiu painting](#), [lord jagannath painting](#), [odisha paintings](#), [patachitra art](#), [patachitra paintings](#), [puri jagannath paintings](#), [tasar paintings](#), [wall decor](#)



Product Description
