



Buddha Stone Statue Antique Style 1.5 feet

[Read More](#)

SKU: 01841

Price: ₹25,000.00 inc. GST

Stock: instock

Categories: [Garden Buddha Statue](#), [Buddha Statues](#), [Garden Sculptures](#), [Sitting Buddha Statues](#), [Statues & Sculptures](#)

Product Description



Buddha Snake Idol for Home 2.5 feet

[Read More](#)

SKU: 01814

Price: ₹36,000.00 inc. GST

Stock: instock

Categories: [Buddha Statues](#), [Garden Buddha Statue](#), [Garden Sculptures](#), [Sitting Buddha Statues](#), [Statues & Sculptures](#)

Product Description



Amitabha Buddha Sandstone 5.5 feet

[Read More](#)

SKU: 01741

Price: ₹230,000.00 inc. GST

Stock: instock

Categories: [Buddha Statues](#), [Garden Buddha Statue](#), [Garden Sculptures](#), [Sitting Buddha Statues](#), [Statues & Sculptures](#)

Product Description



Sandstone Chakra Sitt Outdoor Pa

[Read More](#)

SKU: 01705

Price: Call for price

Stock: instock

Categories: [Buddha Statues](#), [Sitting Buddha Statues](#)

Tags: [Big Buddha Statue](#), [Stone Buddha Statue](#), [Garden](#), [Buddha Garden](#), [Buddha Statue](#), [Buddha Statue for Interior Decoration](#), [Manufacturer](#), [Sandstone](#)

[Sandstone Buddha Statue for Home Decoration](#),
[Sandstone Stone Buddha Statue Manufacturer](#)

Product Description



Sandstone Large Sitting Meditating Buddha Sculpture

[Read More](#)

SKU: 01676

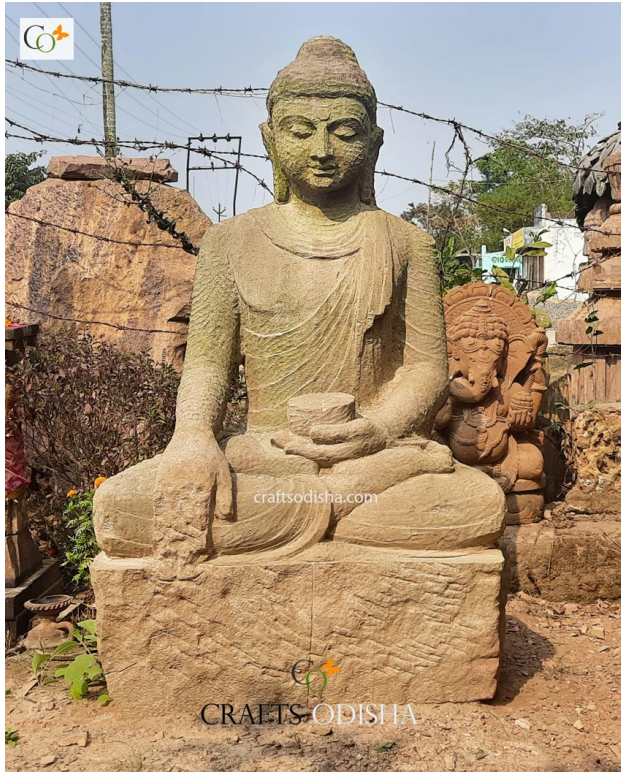
Price: Call for price

Stock: instock

Categories: [Buddha Statues](#), [Garden Buddha Statue](#), [Sitting Buddha Statues](#), [Statues & Sculptures](#)

Tags: [Big Buddha Statue for Outdoor](#), [Buddha Decor for Garden](#), [Buddha Garden Statue](#), [Buddha Home Decor Statues](#), [Buddha Statue for Home Decor](#), [Buddha Statue Online for Home and Garden](#), [Buddha Stone Statue for Interior Designing](#), [Buddha Stone Statue Manufacturer](#)

Product Description



Kanda Stone Rough Finish Style Sitting Buddha Statue for Outdoor

[Read More](#)

SKU: 01665

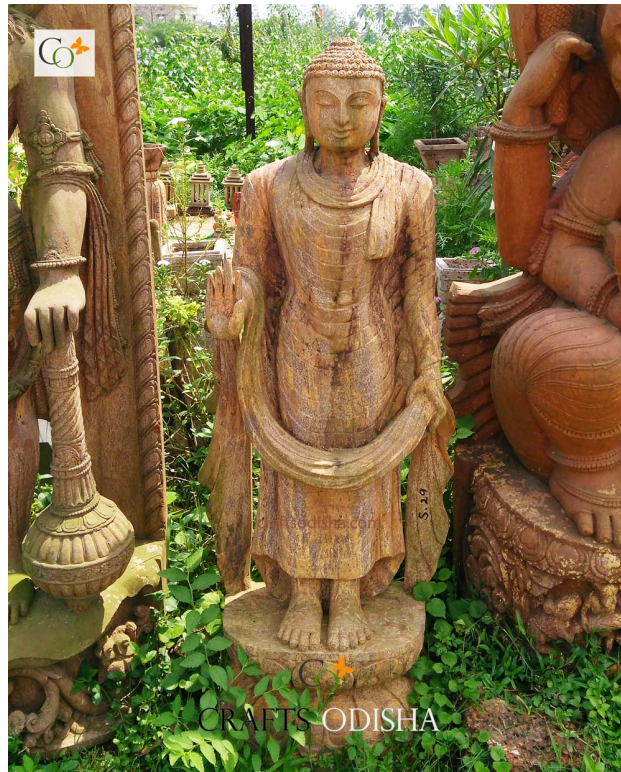
Price: ₹140,000.00 inc. GST

Stock: instock

Categories: [Buddha Statues](#), [Garden Buddha Statue](#), [Sitting Buddha Statues](#), [Statues & Sculptures](#)

Tags: [Big Buddha Statue for Outdoor](#), [Buddha Garden Landscaping](#), [Buddha Garden Statue](#), [Buddha Home Decor Statues](#), [Buddha Stone Statue for Interior Designing](#), [Buddha Stone Statue Manufacturer](#)

Product Description



Sandstone Standing Buddha for Outdoor

[Read More](#)

SKU: 01523

Price: ₹85,000.00 inc. GST

Stock: instock

Categories: [Buddha Statues](#), [Garden Sculptures](#), [Statues & Sculptures](#)

Tags: [Big Buddha Statue for Garden](#), [Buddha Garden Statue](#), [Buddha Home Decor Statues](#), [Buddha Stone Statue for Interior Designing](#), [Buddha Stone Statue Manufacturer](#)

Product Description

Standing Blessing Buddha for Garden 4.5 ft. A collectible vibrant weathered finish statue to lend the illusion of age. Add this artisanal charm o your garden or lawn, that integrates your garden with perfect harmony. Material: Sandstone Redstone **Dimension(HWL):** 54 x 20 x 12 inch **Height:** 4.5 ft (Approx.) **Position:** Standing **About the statue posture:** It represents the time when he is ready to teach the four noble truths, after attaining enlightenment. The statue is seen standing right hand raised to the shoulder, palm facing outward, figures are upright and joined, gesturing to Abhayamudra. Abhay means fearlessness. Feet are joined in immobile. Left-hand swings along the left side of his body. The facial features show at peace with life. **About Lord Buddha:** Lord "Buddha" the founder of Buddhism. Buddha means " a person who is awake". Born into a royal family, raised with all lavish and luxury, married, and had a son until the age of twenty-nine he was oblivious about worldly affairs. One day he went to Kapilavastu, on the way he saw an old man, a sick man, and a corpse taken to the cremation ground, each for the first time in his life. Which disquiet him while returning he also encountered a sage who walking in the street with a peaceful expression on his face. So Lord Buddha forsake all worldly things, in search of the ultimate truth and enlightenment. After peregrinating around for six years days and nights he finally found it under Bodhi tree, near Bodh Gaya by meditating deeply for forty-nine days. He discovered human life is about suffering but deep concentration, spiritual awakening, and ethical behavior are the ways to achieve enlightenment. **Placement suggestion :** For a soothing walk in your garden or lawn, or to distress yourself, place the master peace there along with some color stone, flowers, plants around it to rejuvenate the tranquil atmosphere around it. You can place him near a water body or fountain, sidewalk, restaurant, park, etc. It represents the earth element so placing him on the Northeast, southwest, and center will be beneficial. **Care:** Sandstone statues are more beautiful handling and age, dusting can be done using a cloth or broom.



Granite Stone Sitting Dharmachakra Buddha Statue 31 inch

[Read More](#)

SKU: 01254

Price: ₹125,000.00 inc. GST

Stock: instock

Categories: [Buddha Statues](#), [Garden Buddha Statue](#), [Sitting Buddha Statues](#), [Statues & Sculptures](#)

Tags: [Big Buddha Statue for Outdoor](#), [Black Granite Stone Statue Manufacturer](#), [Buddha Decor for Garden](#), [Buddha Garden Landscaping](#), [Buddha Garden Statue](#), [Buddha Statue for Home Decor](#), [Buddha Stone Statue for Interior Designing](#), [Buddha Stone Statue Manufacturer](#)

Product Description

Granite Stone Sitting Dharmachakra Buddha Statue 31 inch. A unique dash of black color, capture attention from every angle. An gorgeous and graceful option for your interior.

Material: Granite/Blackstone **Dimension(HWL):** 31 x 21 x 10 inch

Height: 2.5 ft **Position:** Sitting

Buddha "A person who is awake", the founder of Buddhism. He was the son of a king, brought up in all lush and opulence. married and had a son. Until the age of 29, he was away from worldly sorrow and reality. one day he encountered the harsh side of human definite fat of being old, sick, and dead. He realized no wealth will prevent him from sickness, old age, or death. when he saw a monk, there when he realized he have to find a way to end the Dukha and overcome this universal suffering. That is when he forsakes all the lavish and royal life and sets out in search of the answer. six years later with deep meditation and concentration, he found enlightenment. and the rest of his life he spent teaching others about his findings and how to achieve them.

He gave his first sermon at Sarnath to his disples. His first teaching was about the Four noble truths and the eight-fold path. The above statue of Buddha is the moment of his teaching after gaining enlightenment. In this statue Buddha is seen sitting on a lotus platform, in both legs folded each other known as double lotus pose. The lotus here depicts the message that even

after growing in dirty water it produces a beautiful flower-like wife all men have the potential to overcome suffering and be able to achieve enlightenment. Both hands are held near the chest, (signifying that the teaching is given straight from the heart) forming a circle with the index and thumb of both hands. The palm of the right hand is turned out whereas the palm of the left is turned in. The circle represents the wheel of Dharma "Dharma chakra", where Dharma means righteousness and chakra means the universe. Dharmachakra teaching mudra statue is beneficial for people desiring academic success and spiritual growth in their life. The teaching Buddha statue is a reflection of pure wisdom and intellectual and fulfilling destiny. **Placement:** In your living, office, study, make sure to face him the east. Northeast and southwest are considered the favorable ones. **Care:** extremely easy to clean. Dusting the surface using a cloth or broom, will ward off the dust from accumulating.



Large Buddha Head Statue Sandstone 3 feet

[Read More](#)

SKU: 01025

Price: ₹100,000.00 inc. GST

Stock: instock

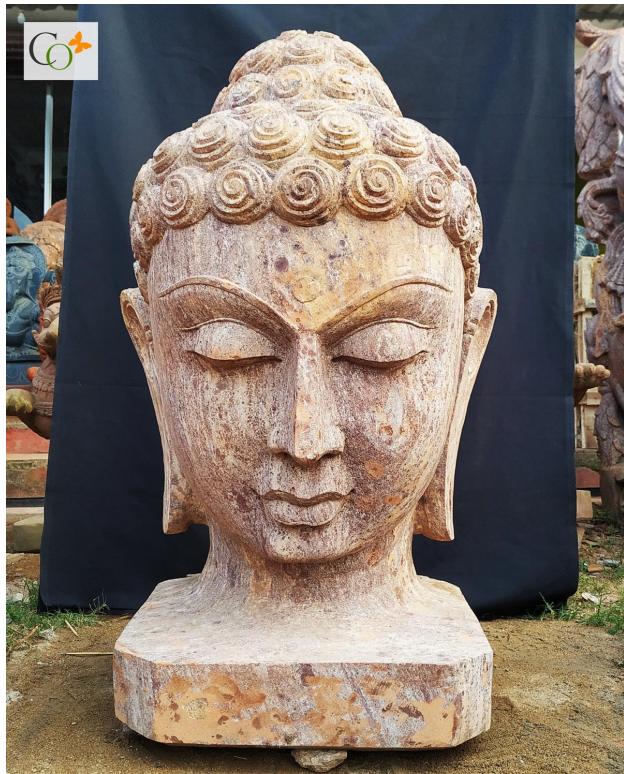
Categories: [Buddha Head Statues](#), [Buddha Statues](#), [Garden Buddha Statue](#), [Statues & Sculptures](#)

Product Description

Large Buddha Head Statue Sandstone 3 feet, An alternative to traditional posture. A distressed finish holds a sense of generosity and compassion. **Material:** Sandstone/Redstone/Khondalite Stone **Dimension(HWL):** 34 x 19 x 18 inch **Height:** 3 feet (approx.) Buddha the name means "the awakened one". The founder of Buddhism. Born and named, Sidhartha (one who attains goal). The prince of the Shakya tribe. Away from the harsh reality of worldly sorrow, he was raised and brought up with all wealth and opulence. married and had a son. Until the age of twenty-nine, an incident changed his life. One day on his way to Kapila Vastu he saw an old person, a sick man, and a corpse. It makes him unsettle of the harsh truth, that every human on

earth is subject to the fate of getting old, sick, and dead, and no opulence or pleasure will protect him from getting the dukkha. He also saw a monk who is walking with peace and serenity on his face. All these made him down the material pleasure of the royal life and he went on the spiritual quest. For the next six years, he follows many tea Heightchers' instructions, yogi practices, got into self-mortification, self-deprivation but did not find any specific solution to his quest. That is when he decided to find a middle path instead of going any extreme. He finally sat under a fig tree in deep meditation and attain enlightenment. From then he is known as Lord Buddha. He spent all his life teaching others. He spent forty-five years teaching others by traveling from place to place. and took his last breath at Kushinagar. Buddhas statue always has different postures, hand gestures which have many spiritual meanings but the head is always the same. Buddha head holds the secret of enlightenment, knowledge, and wisdom. The head always demonstrates placidity and poise. In his prince hood, he used to the topknot. He shaved his hair off for the spiritual quest. A shaved head is a symbol of getting rid of illusion and ignorance. But his head is always portrayed with ringlet curls. Those ringlets are not short hair but the 108 died snails. In his meditation days, Lord Buddha was in deep meditation even after he was under the tree the rays of the sun was directed towards his bald head, at that very moment, a snail was making his way around seeing Buddhas states and realized that this will make him distracted and lose focus on his concentration due to the sun rays, the way up to his head and sat there. Other snails were also the first one and end of the day when Buddha stood from the meditation he realized he was caped of 108 snails, who had given their lives to make a safe focus free environment so that Buddha reach the path to enlightenment. So they are always displayed in his head to remind us about their sacrifice. His elongated ears remind us that once he was a prince who wears heavy jewelry but gave up all on divinity and mankind. His smiling lips depict despite all suffering, he has higher wisdom and understanding of the universe. The circular dot on his forehead resembles the third eye, he can see beyond the physical and materialistic arena. Keeping a Buddha head big size in the space evokes peaceful and harmonious energy in the atmosphere. It amplifies the calmness within us.

Placement: Keep Large Buddha Head Statue in garden to achieve success. **Care:** Use a cotton cloth or a broom for the dusting



Stone Buddha Head Statue 2.5 feet

[Read More](#)

SKU: 01024

Price: ₹72,000.00 inc. GST

Stock: instock

Categories: [Buddha Head Statues](#), [Buddha Statues](#), [Garden Buddha Statue](#), [Statues & Sculptures](#)

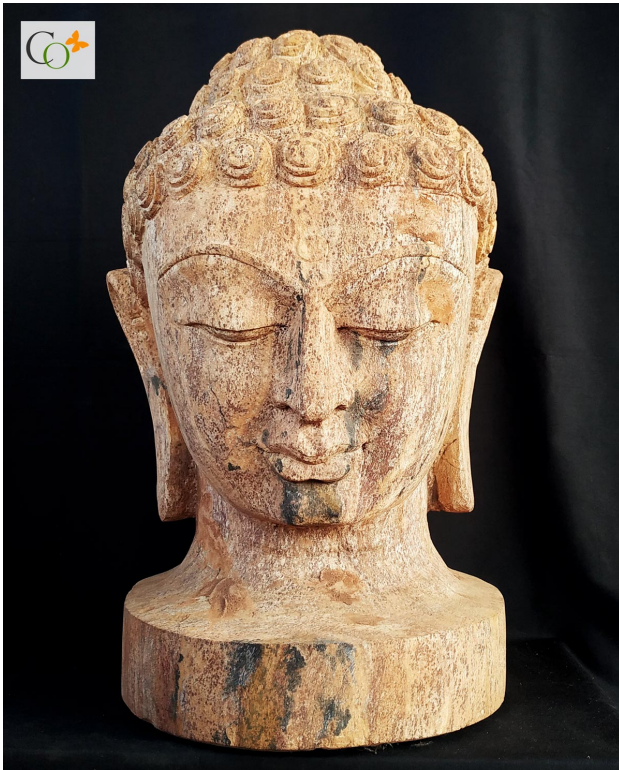
Product Description

Sand stone Buddha Head Statue 2.5 feet, A lighthearted interior theme, with a rugged finish making it look like standing for ages. Decorate your space with a unique piece of the Buddha head with a serene expression and appealing elegance.

Material: Sandstone / Redstone / Khondalite Stone **Dimension(HWL):** 28 x 16 x 16 inch

Height: 2.5 feet There was a prince named Siddhartha Gautama. Brought up and raised in wealth and luxuriousness. Shove off from the luxury life after encountering the suffering of the world at the age of twenty-nine only. undergo many extremes and finally determined to find a middle path six years later which appears to be his all answer to the suffering by meditating under the bodhi tree. The person is known to be "Buddha" which means the awakened one. Which he later share with the world, how to escape from suffering and the path to achieve it, he spent his entire life teaching others. Lord Buddha's life has been showcased through many postures and gestures him from meditating, sitting, standing to reclining, each posture has some significance with his life except the head, which remains the same in all of his distinct physical features. That curly hair on his head was not hair, Lord Buddha has shoved his head when he left his palace, during his meditation time he was meditating under a tree, a snail which was passing by saw that the sun rays directed towards Buddha's bald skin which may distract him from achieving his goal, tom which the snail went up to his head so he can provide lubrication from his damp body to protects Lord Buddha's skin, seeing this many other snails also followed him to the head. When Lord Buddha stood up after his meditation he find out 108 snails covered up his head, and succumbed to death due to the hot rays dehydrated and dried

only to save him from the rays. So the head of Buddha always seen the snails covering in his head to remind the sacrifice of those 108 martyrs who helped him to achieve the path of enlightenment. The top nut bump on his head represents the intelligence and polymath he gained after enlightenment. The dot on his forehead widely known as the third eye, makes him see beyond the worldly and physical world. His protracted ear lob symbolizes the state that he can hear the suffering of the world. His half-closed eyes depict his deep contemplative state yet see through the awakened third eye. The smirk smile on his face illustrates his understanding of the universe despite the suffering. The presence of the Lord Buddha head statue benefits us in many ways, it improves mental well-being, strengthens the calmer side of one's inner self, and develops a strong vibe of peace around the surrounding. Keeping a Buddha head at study and kids room will rip the success benefit of an academic purpose. And keep in mind always face him to the east where ever you purpose to place him. **Placement:** Not only spiritual benefits it can be proved to be a magnificent home decor piece to add ornamentation to the decor. Place a head statue if you have a tiny balcony garden, you can put him among the flower pots. Otherwise many other options like statue him in Console table with few figurines, and on the sideboard between two lamps of the same design will amplify beauty to your decor. Also, it can be proved to be a divine gifting option for your loved ones. **Care:** Sand stone Buddha Head Statue can be easily clean with fiber cloth or with a broom, whenever required to get rid of dust.



Sand Stone Buddha Head Statue 18 in

[Read More](#)

SKU: 01022

Price: ₹27,000.00 inc. GST

Stock: instock

Categories: [Buddha Head Statues](#), [Buddha Statues](#), [Garden Buddha Statue](#), [Statues & Sculptures](#)

Product Description

Sand Stone Buddha Head Statue 18 in. A beautiful distressed statue head finish has many placement possibility through out your home or office. This piece has ability to capture the the mind with placidity with a single glance.

Material: Sandstone / Khondalite Stone **Dimension(HWL):** 18 x 12 x 12 inch **Height:** 1.5 ft

Lord Gautama Buddha, the pioneer of Buddhism. Teaches the world how to escape the suffering of the world. Lord Buddha's head illustrates his aspects of life with many significance. His head looks covered with curly hair, actually was not the hair, it's the hundred eight snails. During the time he left his palace he shaved his head when he was sat under the Bodhi tree and started to meditate, the sun rays were directed towards his head, a snail passing by noticed this, and realized that the hot rays soon will distract him and lose his concentration so he went up to his head and sat there, seeing this others snails also followed him and all of them sat there to provide cooling his bare head skin with their lubricated body. Later in the evening when Lord Buddha was standing from his meditation, he noticed 108 snails on his head who gave up his life to achieve his enlightenment without distraction. That's why we always displays the head with snails reminding of their sacrifice. His semi closed eyes illustrates his awaken of inner as well as outer world. His long ear lobes represent his ability to hear the suffering of the world, his dot of forehead illustrates third eye of wholeness. His smirk smile depicts the understanding of the real universe in spite of the suffering. His life long teaching was based on finding out the sorrow or suffering and the way to escape it. His teaching include four noble path, the middle path between the extreme. and eighth fold path. Create a tranquil and serene energy in your home or office with the Buddha head statue. In today's life full of hectic, the statue bring placid and balanced energy with our inner self. A must have piece to add in your space. **Placement:** Make a space among your tiny garden of your balcony for the Buddha head statue. You can place on the console or side board with few more figurines or between lamps. Consider it on the shelf and in corridor upon a table. A perfect gifting option for your dear ones. **Care:** Dust the surface with a cloth or broom periodically to ward off dust.



Buddha Statue for Home Vastu Sandstone

[Read More](#)

SKU: 01776

Price: ₹60,000.00 inc. GST

Stock: onbackorder

Categories: [Buddha Statues](#), [Garden Buddha Statue](#), [Sitting Buddha Statues](#), [Statues & Sculptures](#)

Product Description

Buddha Statue for Home Vastu balances beauty and functionality with pure grace. This beautiful piece delivers an updated take on a true classic.

Material: Sandstone Redstone statue

Dimension(HWL): 36 x 20 x 10 inch

Position: Sitting

Height: 3 ft

Characteristics of the Buddha Statue for Home:

- A fine sculpture of Protection/Blessing Buddha is displayed above.
- The statue seen in rich white sits over a fully bloomed lotus pedestal.
- As shown above, his right hand is raised and facing outward symbolically portraying a guard.
- While the left one extended towards the palm up in the lap which means courage and offers safeness.

About the blessing Buddha:

- Siddhartha Gautama is "Buddha" which stands for the "Awakened One".

- Born as a monarchical Prince whose father had protected him against any kind of distress. From the time of his birth until the age of 29, he was provided everything that one could crave, looks and wealth, a beautiful wife, and a healthy son.
- He encountered sickness, old age, and death for the first time when he reached the age of 29. Shattered by what he saw Goutama learned that all beings were subject to these things, no matter how much they had of material goods and grandeur. He could no longer ignore the fact of life.
- So, he left his home forever and took up the begging bowl and staff of the Samana to seek the end of his samsara, the constant cycle of births, deaths, and rebirths.
- Gautama sat under a huge tree that was later called the “wisdom,” or “Bodhi” tree, and asserted not to leave it until he achieved the liberating understanding he sought.
- He undertook a long and challenging period of meditation that lead up to his gaining deep insights into a human necessity. Ultimately, in overpowering the tricks of the demonic Mara, he attains Nibbana (or nirvana).

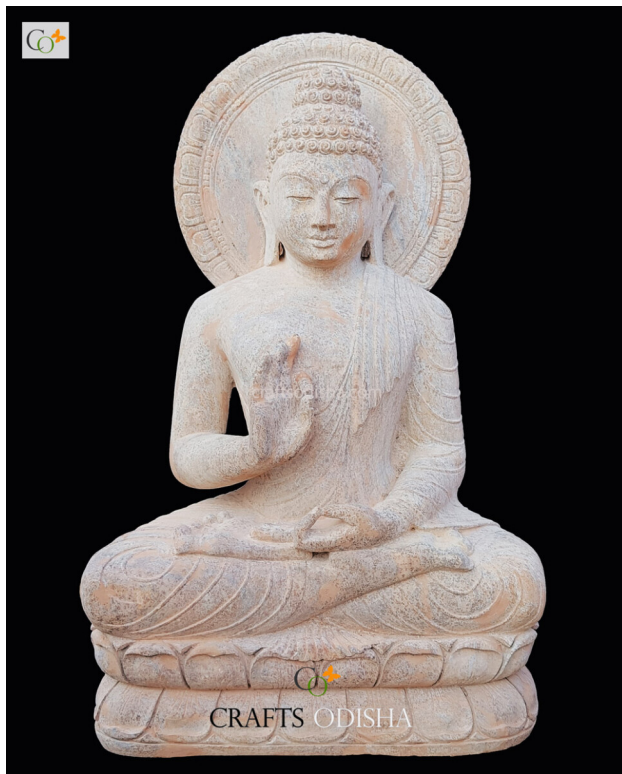
Tips for creating a place for the Buddha statue:

- If there is a pond, pool, or water fountain in your garden plant the Buddha statue there to create the ultimate Zen ambiance.
- Pruned evergreens are great but little hills with groundcover plants are more creative if you place your statue there.
- Create natural-looking paths in your garden to lead it to the statue where you placed it.
- If you have a moist, shady area in your garden where isn't any foot traffic, grow moss there. It's a beautiful statue placement idea for a zen look.
- You need a lot of small stones or sand to design dry landscapes where you can exhibit your statue.
- Adding stones and pebbles in different sizes is a great way to surround your Buddha statue.
- Using subtle color contrast and bold textural differences can create the interest necessary in a minimalist garden to exhibit your statue.
- Stone lanterns shaped as pagodas are quite popular features of zen gardens, If you have one of them create a zen feel near the statue.
- Adorn your statue with evergreen plants as they usually come in different sizes with different shapes carefully mixed together.

Cleaning tips for Buddha Statue for Home Vastu :

- Start the cleaning by dampening it using a hose spray. Once it got soaked, rinse it thoroughly with a cloth or sponge.

- Let it air dry after giving a final bath.



4 feet Outdoor Buddha Statue Sandstone

[Read More](#)

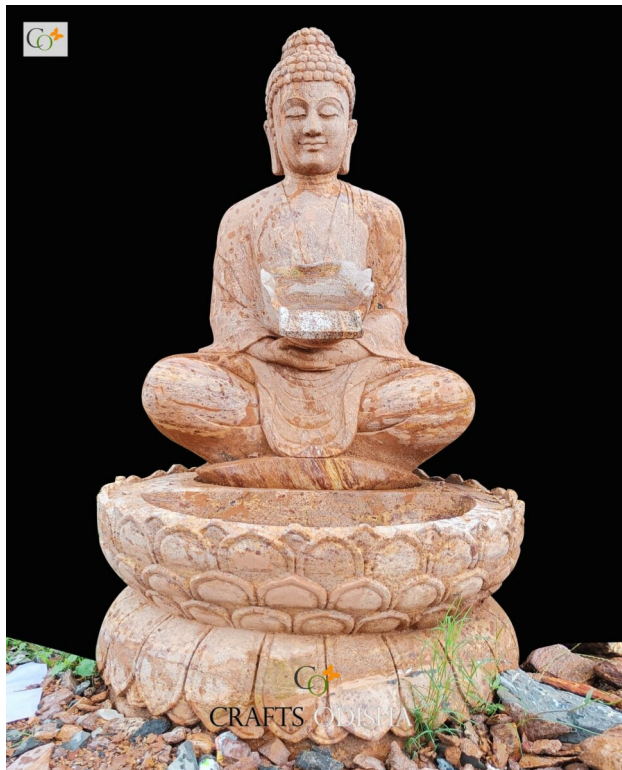
SKU: 01850

Price: ₹80,000.00 inc. GST

Stock: onbackorder

Categories: [Garden Buddha Statue](#), [Buddha Statues](#), [Garden Sculptures](#), [Sitting Buddha Statues](#), [Statues & Sculptures](#)

Product Description



Beautiful Buddha Fountain Water Feature

[Read More](#)

SKU: 01788

Price: ₹120,000.00 inc. GST

Stock: onbackorder

Categories: [Fountain Sculptures](#), [Buddha Statues](#), [Garden Buddha Statue](#), [Garden Sculptures](#), [Sitting Buddha Statues](#), [Statues & Sculptures](#)

Product Description

The beautiful Buddha Fountain Water Features make them as popular for designing a zen garden as different evergreens.

Material: Sandstone

Dimension(HWL): 42 inch

Height: 3.5 feet

Elements of the Buddha fountain garden statue:

- The sculpture is a one-tier fountain for outdoor garden landscaping. A decorative reservoir is used for discharging water.
- The attractive element is the Lord Buddha's statue on the fountain.
- It also attracts birds to bathe and drink in your fountain.

Add class & elegance with one tire fountain for outdoor garden landscaping:

- According to Vaastu, the fountain should be placed on the front of the house, in the southeast and west zone.
- Exhibiting the Buddha fountain in your own garden, park or lawn is very calm and you can easily design it.
- A koi pond with carps, a sand garden, and big stones, moss, and lots of green will help you to create an atmosphere
- Add wooden bridges, pebble-covered areas, water lilies, classical Japanese lanterns, a fountain, some lights, and voila and your garden is ready to allure you.
- Display the Buddha fountain in the courtyard is a perfect place for a little rock garden because it's easier to create low-maintenance conditions there.
- Evergreens are the most popular plants in Japanese gardens. They usually came in different sizes with different shapes carefully mixed together which you can plant around the Buddha fountain.
- Adding some stepping stones toward the fountain would be a soothing idea.
- Adding an area with raked sand to your fountain statue is a great way to represent water.
- Use Subtle color contrast and bold textural near the Buddha fountain.
- Colorful koi and goldfish bring hours of enjoyment beneath the fountain.
- Adding stones and pebbles in different sizes is a great way to achieve this Zen look you're craving for your Buddha fountain.

Advantages of water fountain:

- It brings wealth, fortune, and prosperity.
- Flowing water symbolizes the flow of money, wealth, and positivity. So, keeping outdoor water fountains is considered auspicious.
- Attracts cheerful energy, and tranquility to the atmosphere.
- Its calming and calming trickling sound can lift your mood and make the space peaceful.

How to Clean & care your Buddha fountain:

- Turn off the water fountain before doing any upkeep.
- Begin it by draining the water from the fountain. Cleanse the decorative item with a sponge to eliminate algae, moss, or any biological growth.
- The water pump becomes jammed with water, making its natural blockage so clean it using a washcloth or towel, doing this every so often lets the water flow freely.
- The following method keeps the garden statue more nicely in the long run.



Vajra Tara Buddhist Goddess Bust Statue

[Read More](#)

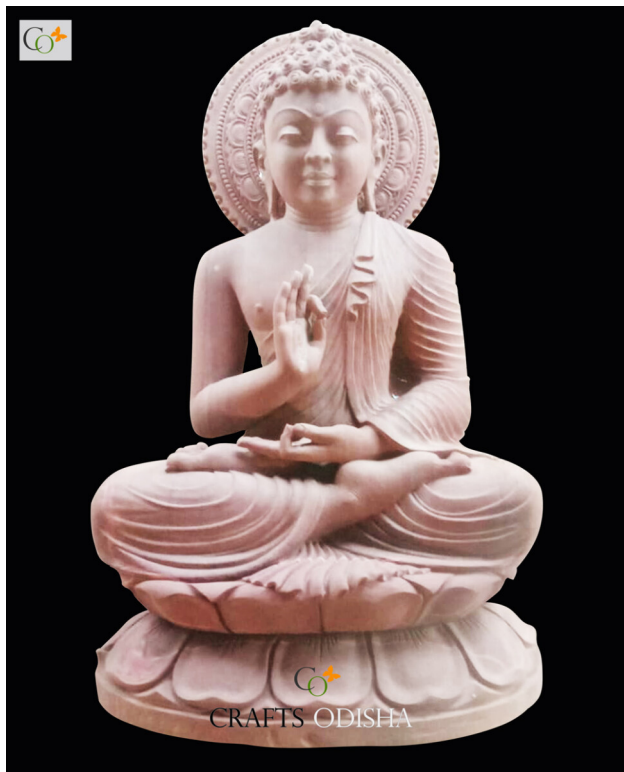
SKU: 01773

Price: ₹170,000.00 inc. GST

Stock: onbackorder

Categories: [Buddha Statues](#), [Garden Buddha Statue](#), [Standing Buddha Statues](#), [Statues & Sculptures](#)

Product Description



Buddha Statue for Home Decor Pink Sandstone

[Read More](#)

SKU: 01772

Price: ₹90,000.00 inc. GST

Stock: onbackorder

Categories: [Buddha Statues](#), [Garden Buddha Statue](#), [Garden Sculptures](#), [Sitting Buddha Statues](#), [Statues & Sculptures](#)

Product Description



Gautam Buddha Statue Sitting Sandstone 2.5 feet

Gautam Buddha Statue Sitting Sandstone 2.5 feet

[Read More](#)

SKU: 01770

Price: ₹35,000.00 inc. GST

Stock: onbackorder

Categories: [Buddha Statues](#), [Garden Buddha Statue](#), [Sitting Buddha Statues](#), [Statues & Sculptures](#)

Product Description



Abhaya Mudra Buddha Statue for Home 3.5 feet

[Read More](#)

SKU: 01752

Price: ₹75,000.00 inc. GST

Stock: onbackorder

Categories: [Sitting Buddha Statues](#), [Garden Buddha Statue](#), [Statues & Sculptures](#), [Garden Sculptures](#), [Buddha Statues](#)

Product Description



Sandstone 2.5 ft Blessing Buddha Palm Statue for Home and Garden

[Read More](#)

SKU: 01736

Price: ₹34,720.00 inc. GST

Stock: onbackorder

Categories: [Buddha Statues](#), [Garden Buddha Statue](#), [Garden Sculptures](#), [Modern Sculptures](#), [Statues & Sculptures](#)

Tags: [Sand Stone Sculpture Manufacturer](#), [Sand Stone Statue Manufacturer](#), [Sandstone Statue for Outdoor Garden](#)

Product Description

Simple and uncomplicated. A single-hand palm design is easy to intricate any decor theme. The Blessing Buddha Palm Abhayamudra statue allows you for easy coordination.

Material: Sandstone / Khondalite Stone statue

Dimension (HWL): 30 x 18 x 7 inch

Height: 2.5 ft

Description of the statue of Abhayamudra Blessing Buddha palm:

- It's a sculpture of a palm of the Blessing Buddha statue in Abhayamudra or Abhayahasta Mudra.
- In this statue, the thumb and index finger touch, creating a circle that symbolizes an uninterrupted flow of wisdom.
- The other three fingers point up towards the heavens with the palm facing outward.
- This mudra can bring receiving and discussing teachings for growth and awakening into life.

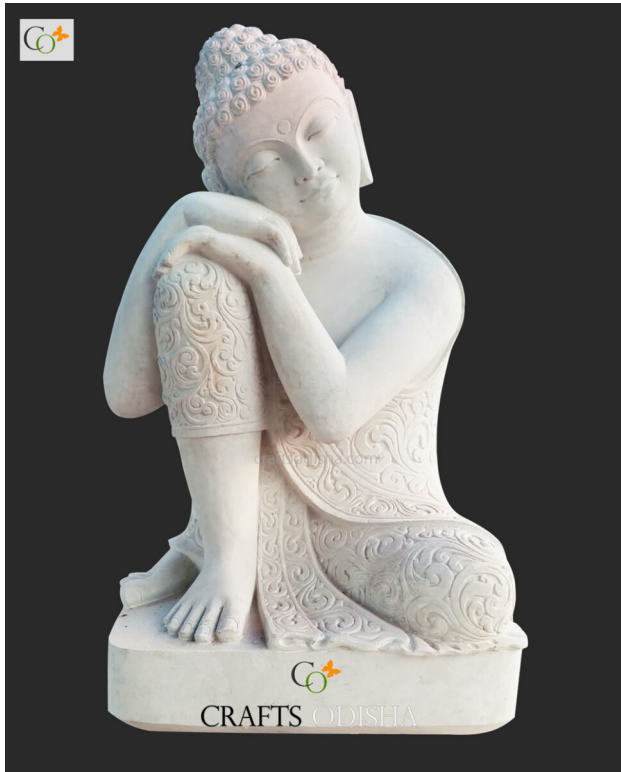
Placement tips of the Blessing Hand Buddha palm statue:

- Create a winding path, that leads your eye past the stone pagoda and invites you to speculate what's around the next corner where you exhibit the palm statue.
- Moss makes a pacific-looking groundcover in moist, shady areas. Because moss doesn't tolerate foot traffic. Placing a stepping stone walkway among the moss to allow passage towards the palm statue will be a great idea.
- Makes an entertaining for viewing the serene landscape with the palm sculpture in the park or landscape with a tea house or pavilion made out of wood or bamboo will be awe-inspiring.
- Stone lanterns shaped as pagodas work well to bring some Japanese style to your sculpture, as well as provide a charming glow in the evening.
- Use subtle color flowers contrast and bold textural differences to create interest in the sculpture.
- Arching branches that reach over the statue will create an architectural form.
- A small reflecting pool or an artificial water feature blends well and brings life to the atmosphere.

Best way to clean the home garden statue:

- Spray the entire surface of the home garden statue using a hose or pipe.

- Scrub the surface thoroughly with your natural fiber scrub brush or a sponge.
- After the mold or mildew is removed from the surface rinse it well through the hose spray.
- Using a dry microfiber cloth, soak up the excess water by rubbing it dry or you can let it air dry.



White Sandstone Peaceful Resting Garden Buddha Statue 2.5 ft

[Read More](#)

SKU: 01728

Price: ₹66,000.00 inc. GST

Stock: onbackorder

Categories: [Buddha Statues](#), [Garden Buddha Statue](#), [Sitting Buddha Statues](#), [Statues & Sculptures](#)

Tags: [Buddha Decor for Garden](#), [Buddha Garden Landscaping](#), [Buddha Garden Statue](#), [Buddha Home Decor Statues](#), [Buddha Statue for Home Decor](#), [Buddha Statue Online for Home and Garden](#), [Buddha Stone Sculpture](#), [White Sandstone Statue Manufacturer](#)

Product Description

What could be a better gift or a better option to bring home this buddha idol the symbol of peace and serenity! The white sandstone peaceful resting garden Buddha statue is available with CRAFTS ODISHA site to satisfy your every need for calmness.

Material: Off-white Sandstone statue **Dimension(HWL):** 30 x 18 x 10 inch **Height:** 2.5 ft

Description:

- It's an off-white sculpture, of Lord Buddha, resting on his knee sitting over a pedestal.
- The stone sculptures have given an off-white touch in a gentle way, which represents a journey of transition and stimulates feelings of reflection.
- A magnificent piece of a hand-crafted statue created by the efficient Craftmanship of Odisha sculptors.

Some suggestions for disposition of the home garden statue of Lord Buddha:

- A Garden, lawn, or park is a place where you can sit and observe a blossom, a branch, the shape of a rock, or the curves of circles in the sand for hours, so exhibit the sculpture there to unwind after a hard day's work.
- When a pathway is used for a statue, they encourage mindfulness, opt for natural stone and keep lines curved.
- Place it in your yard, lawn, park, and garden around your plot in peace, taking in the surrounding nature and basking in the greenery of nearby foliage.
- The sound and sight of water are automatically soothing, which is why a fountain is a great addition to displaying near sculptures.
- Surrounding the sculpture with smooth pebbles and then bordered in fine gravel, this sandy-hued style complements the landscape well.
- Try adding a small Acer or two nearby, too. It will bring a touch of color to the scene, whilst its gentle sway in the breeze will enhance the feelings of peacefulness.

Cleaning Technique of the Resting Garden Buddha statue:

- By using a hose or pipe douse the home garden statue as a whole.
- Now when it got drenched scrub the surface using a sponge or soft cloth.
- Again give the home garden statue a final bath & let it air dry. Or you can use a towel to dry the home garden statue.



Dhyana Mudra Buddha Statue Sandstone

[Read More](#)

SKU: 01727

Price: ₹60,000.00

Stock: onbackorder

Categories: [Buddha Statue](#), [Sitting Buddha Statue](#)

Tags: [Buddha Decor](#), [Landscaping](#), [Buddha Statue](#), [for Home Decor](#), [Buddha](#)

[Garden](#), [Buddha Stone Sculpture](#), [White Sandstone Statue Manufacturer](#)

Product Description

The Dhyana mudra makes this Buddha statue an excellent choice for meditation areas in your alter. The Dhyana Mudra Meditation Buddha statue from off white Sandtone statue that highlights its rich detailing throughout. Material: Off-white Sandstone statue **Dimension(HWL):** 36 x 25 x 12 inch **Height:** 3ft **Position:** Sitting **About the rustic garden statue of Dhyana Mudra of Lord Buddha:**

- It's a statue of Gautama Buddha in Dhyana Mudra.
- Lord Buddha is sitting on a square plinth in the lotus pose.
- In this form Buddha is seen sitting with his legs folded, face up and hands lying on the lap.
- His eyes are partially closed as he is in deep meditation.

Buddha:

- Buddha means the "Enlighted one".
- Born as a prince with the name of Siddhartha Gautama in Kapilavastu.
- His life takes a massive turn at the age of 29 when he is faced with the suffering of the world.
- He left the luxurious life and meditated under a Bodhi tree to find the answer.
- His preservice was answered after 6 years of meditation.
- Rest of his life he spent teaching others after attaining enlightenment.

Add some peace and tranquil atmosphere to your garden:

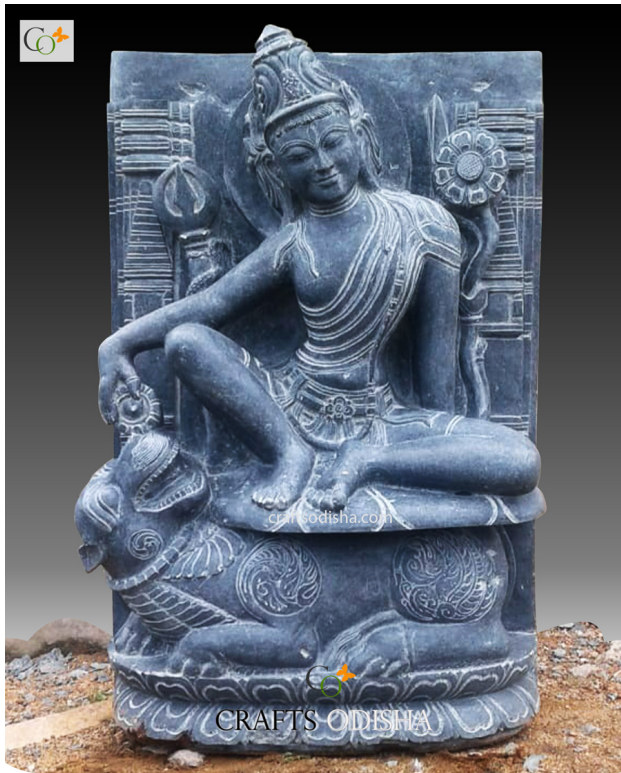
- A blossom tree is always a welcome addition to any garden, and incorporating the meditation Buddha statue near it will enhance the tranquil feeling in the environment.
- Fine gravel or sand is one of the most common features, to emplace the statue.
- To recreate the authentic look, add a dedicated gravel area to your plot, perhaps with a border of larger rocks around the sculpture.
- A central tree, such as this impressive Acer, can make a striking focal point and is a means to get creative with sculpture.
- try a circular pattern around a sculpture, whilst the rest of the area can be raked into orderly straight lines for a gentle contrast.
- Add positioning large stones and rocks as focal features in your plot. They will provide a sculptural element in a naturalistic way.

Benefits of the meditating Buddha garden statue:

- You will achieve inner peace by meditating Buddha statue.
- It reduces stress, anxiety, and depression.
- Also, bring peace and harmony to your home and life and unusual problems will fall away.

Tips for cleaning the meditation Buddha statue:

- The procedure should start with housing the statue first.
- When the statue gets wet scrub and rinses it well with a sponge or cotton cloth.
- Once done with rinsing and cleaning all around, now give the statue a final shower and let it air dry.



Granite Stone Simhanada Lokeshvara Buddhist Deity Avalokiteshvara Sculpture

[Read More](#)

SKU: 01689

Price: ₹250,000.00 inc. GST

Stock: onbackorder

Categories: [Sitting Buddha Statues](#), [Buddha Statues](#), [Garden Buddha Statue](#), [Hindu Statues](#), [Shiv Ji Statues](#), [Statues & Sculptures](#)

Tags: [Big Lokeshvara Statue for Outdoor Villa Decoration](#), [Buddhist Sculpture for Home and Garden](#), [Granite Stone Lokeshvara Statue Manufacturer](#)

Product Description

This figuratively ideal granite stone sculpture is a unique way of art, which makes it distinct from the rest. The Simhanada Lokeshvara Avalokiteshvara Buddhist deity offers a touch of the ancient Buddhist Lord.

Material: Blackstone / Granite stone **Dimension(HWL):** 36 x 24 x 10 inch **Position:** Sitting
Height: 3 ft **Annotation of the home garden statue:**

- An alluring statue of Medicine Buddha sitting over an engraved pedestal.
- The form is usually shown as a seated or standing figure with four hands, one of which holds a lotus, an ax, and a container of healing nectar.
- A unique sculpt made on special demand by customers, which is intricately carved by our efficient sculptor.

Simhananda Lokeshvara:

- Avalokiteshvara is the epitome of the compassion of all buddhas.
- Avalokiteshvara Sanskrit: avalokita, “looking on”; ishivara, “Lord”.
- These specific forms he represents as a wealth and powerful deity.
- Avalokiteshvara is shown here begins with Simhanada, white in color, and riding a lion. Simhanada represents compassion and the overcoming of disease and ailments. The second form is a power Lokeshvara, red in color, seated, possessing four arms.
- Avalokiteshvara supremely personifies the Bodhisattva's resolve to postpone his Buddhahood until he has helped every conscious being on earth achieve liberation (Moksha; means, “release”) from suffering and the process of death and rebirth.
- His name has been variously interpreted as “the lord who looks in every direction” and “the lord of what we see”.

Where to place the decorative piece of the garden statue:

- The statue of Lord Buddha should always face the East or Northeast.
- Placed it in the Zen garden along with some lanterns to enhance the look after nightfall.
- The alter and entrance of the home also be a welcoming place to exhibit the statue.
- Draw the eye and make it a focal point, by executing the statue near curated bushes and shrubs.
- A water feature can do magic to the sculpture.

Few blessings from the sacred statue:

- Avalokiteshvara protects against shipwreck, fire, assassins, robbers, and wild beasts.
- And bestows all walks of life of his disples.

Easiest procedure for cleaning the garden statue :

- Get going by showering the statue using a hose spray to wet the sculpture all over, when it gets doused scrub & detached any algae, moss, or debris from its surface using a bristle brush or sponge.

- When all the dust amasses got detached, bathe the home garden for a final time and let it air dry.
 - Cleaning the sculpture twice or once a year will preserve its beauty and looks for years.
-



Big Granite Mugini Stone Blessing Buddha Statue for Outdoor

[Read More](#)

SKU: 01688

Price: ₹450,000.00 inc. GST

Stock: onbackorder

Categories: [Buddha Statues](#), [Garden Buddha Statue](#), [Sitting Buddha Statues](#), [Statues & Sculptures](#)

Tags: [Big Buddha Statue for Outdoor](#), [Black Granite Stone Statue Manufacturer](#), [Black Stone Buddha Statue](#), [Blessing Buddha Statue](#), [Buddha Decor for Garden](#), [Buddha Garden Landscaping](#), [Buddha Garden Statue](#), [Buddha Home Decor](#), [Buddha Home Decor Statues](#), [Buddha Statue for Home Decor](#), [Buddha Stone Sculpture](#), [Buddha Stone Statue for Interior Designing](#), [Buddha Stone Statue Manufacturer](#), [Granite Stone Buddha Statue](#), [Sitting Lord Buddha Statue](#)

Product Description



Pink Sandstone Stone Sitting Buddha God Statue for Home and Garden

[Read More](#)

SKU: 01645

Price: ₹85,000.00 inc. GST

Stock: onbackorder

Categories: [Buddha Statues](#), [Garden Buddha Statue](#), [Sitting Buddha Statues](#), [Statues & Sculptures](#)

Tags: [Bansi Paharpur Stone Buddha Statue](#), [Buddha Decor for Garden](#), [Buddha Garden Landscaping](#), [Buddha Garden Statue](#), [Buddha Home Decor Statues](#), [Buddha Statue for Home Decor](#), [Buddha Statue for Table Decor](#), [Buddha Statue Online for Home and Garden](#), [Buddha Stone Statue Manufacturer](#), [Meditation Buddha Statue](#), [Sandstone Stone Buddha Statue Manufacturer](#)

Product Description
