



Buddha Statue for Home Vastu Sandstone

[Read More](#)

SKU: 01776

Price: ₹60,000.00 inc. GST

Stock: onbackorder

Categories: [Buddha Statues](#), [Garden Buddha Statue](#), [Sitting Buddha Statues](#), [Statues & Sculptures](#)

Product Description

Buddha Statue for Home Vastu balances beauty and functionality with pure grace. This beautiful piece delivers an updated take on a true classic.

Material: Sandstone Redstone statue

Dimension(HWL): 36 x 20 x 10 inch

Position: Sitting

Height: 3 ft

Characteristics of the Buddha Statue for Home:

- A fine sculpture of Protection/Blessing Buddha is displayed above.
- The statue seen in rich white sits over a fully bloomed lotus pedestal.
- As shown above, his right hand is raised and facing outward symbolically portraying a guard.
- While the left one extended towards the palm up in the lap which means courage and offers safeness.

About the blessing Buddha:

- Siddhartha Gautama is "Buddha" which stands for the "Awakened One".
- Born as a monarchical Prince whose father had protected him against any kind of distress. From the time of his birth until the age of 29, he was provided everything that one could crave, looks and wealth, a beautiful wife, and a healthy son.
- He encountered sickness, old age, and death for the first time when he reached the age of 29. Shattered by what he saw Goutama learned that all beings were subject to these things, no matter how much they had of material goods and grandeur. He could no longer ignore the fact of life.
- So, he left his home forever and took up the begging bowl and staff of the Samana to seek the end of his samsara, the constant cycle of births, deaths, and rebirths.
- Gautama sat under a huge tree that was later called the "wisdom," or "Bodhi" tree, and asserted not to leave it until he achieved the liberating understanding he sought.
- He undertook a long and challenging period of meditation that lead up to his gaining deep insights into a human necessity. Ultimately, in overpowering the tricks of the demonic Mara, he attains Nibbana (or nirvana).

Tips for creating a place for the Buddha statue:

- If there is a pond, pool, or water fountain in your garden plant the Buddha statue there to create the ultimate Zen ambiance.
- Pruned evergreens are great but little hills with groundcover plants are more creative if you place your statue there.
- Create natural-looking paths in your garden to lead it to the statue where you placed it.
- If you have a moist, shady area in your garden where isn't any foot traffic, grow moss there. It's a beautiful statue placement idea for a zen look.
- You need a lot of small stones or sand to design dry landscapes where you can exhibit your statue.
- Adding stones and pebbles in different sizes is a great way to surround your Buddha statue.
- Using subtle color contrast and bold textural differences can create the interest necessary in a minimalist garden to exhibit your statue.
- Stone lanterns shaped as pagodas are quite popular features of zen gardens, If you have one of them create a zen feel near the statue.
- Adorn your statue with evergreen plants as they usually come in different sizes with different shapes carefully mixed together.

Cleaning tips for Buddha Statue for Home Vastu :

- Start the cleaning by dampening it using a hose spray. Once it got soaked, rinse it thoroughly with a cloth or sponge.
- Let it air dry after giving a final bath.



Small Sitting Namaste Buddha Idol in Pink Soft Stone 4 inch

[Read More](#)

SKU: 01415

Price: ₹4,000.00 inc. GST

Stock: onbackorder

Categories: [Sitting Buddha Statues](#), [Buddha Statues](#), [Statues & Sculptures](#)

Tags: [buddha statue](#), [Lord Buddha Idols](#), [Meditating Buddha Sculpture](#), [Meditation Buddha Statue](#), [Sitting Lord Buddha Statue](#), [Soapstone buddha statue](#), [stone buddha statue](#)

Product Description

Small Sitting Namaste Buddha Idol in Pink Soft Stone 4 inch. A simple alternative to Buddha's other traditional postures. Wide-reaching positive impact where ever you place it.

Material: Soapstone/Pinkstone Dimension(HWL): 4 x 2.5 x 1.5 Position: Sitting Buddha means "the awaken one" here awaken means the awakened mind, there are seven qualities that led us to an awakened mind, these are mindfulness, investigation, energy, joy, tranquility, concentration, equanimity. With these qualities, we can see things as they are and not what we imagine them to be. Lord Buddha was born as a prince of the Shakya tribe, named Siddhartha Gautama. Raised and brought up with all opulence and luxury in his palace one can fantasy over, unaware of misery, sorrow, and suffering of human faces in the outside world. Married and had a son. One day Gautama ventured out of his palace, he saw three definite aspects of life each for the first time, he saw an old man, a sick man, a corpse. This scene shook him to the core, he perceived that these are inevitable fates of humans, no one can avoid. And then he saw a holy monk walking with peace and serenity in his face All these made him find a way to overcome the universal suffering. He decamps his spiritual quest by leaving the lavish life behind. For six long years, he followed many ascetic, extreme self-denial, self-deprivation, and self-mortification, even if following the extreme asceticism he couldn't find the answer to his

quest. So he abandoned the extremes life nor return to the luxury life instead and discover the middle way, (like neither luxury nor poverty). He sat beneath a Bodhi tree, in deep meditation, and finally achieved enlightenment. The Namaste Buddha/Anjali Buddha widely known as praying Buddha is seen sitting on a lotus pedestal in a double lotus pose known as the Vajrasan pose. The Anjali mudra is expressed with both hands joining together near the chest by pressing the palms of the hands together. The two hands symbolize two inseparable forms of existence, spiritual and material. When it performs near the heart it represents the purity of mind body and speech. With the gesture of namaste Buddha, one can connect to deep peace and serenity. A powerful decor as well as a gift option for your dear ones. **Placement:** It is recommended to place the Anjali mudra statue at the main entrance, living room, or any other place to welcome positive energy. Also ideal for puja room and altar. **Care:** The nonporous material doesn't need much care, gently wiping the surface with a cloth is enough to keep the beauty of the statue.



Pink Soap Stone Earth Touching Buddha Idol 4 inch

[Read More](#)

SKU: 01412

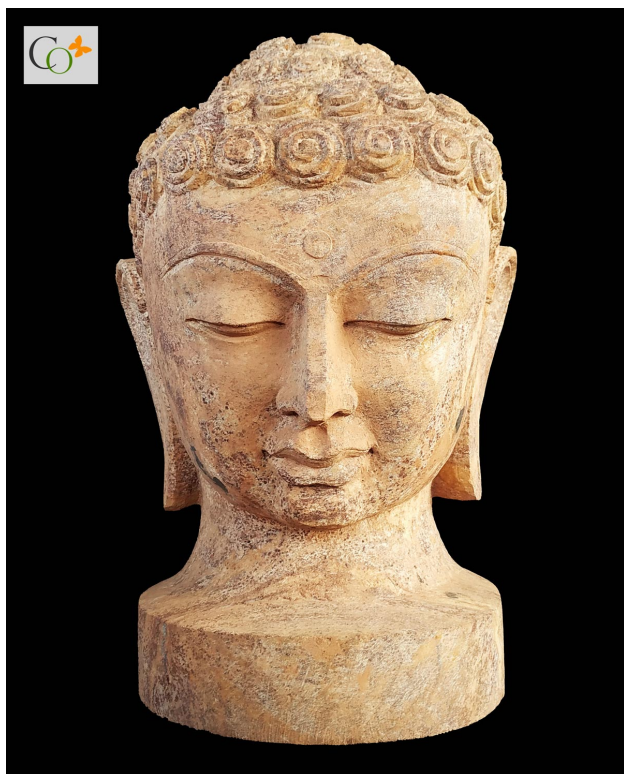
Price: ₹4,000.00 inc. GST

Stock: onbackorder

Categories: [Buddha Statues](#), [Sitting Buddha Statues](#), [Statues & Sculptures](#)

Tags: [buddha statue](#), [Lord Buddha Idols](#), [Meditating Buddha Sculpture](#), [Meditation Buddha Statue](#), [Sitting Buddha Statue](#), [Sitting Lord Buddha Statue](#), [Soapstone buddha statue](#)

Product Description



Sandstone Buddha Head Statue 16 in

[Read More](#)

SKU: 01020

Price: ₹18,000.00 inc. GST

Stock: onbackorder

Categories: [Buddha Head Statues](#), [Buddha Statues](#), [Statues & Sculptures](#)

Product Description

Sandstone Buddha Head Statue 16 inch. A warm weathered finish, persuasive to the semblance of age. Not only an addition to your rustic décor can be also presented to your dear ones as a serene aa traditional gift. **Material:** Sandstone / Redstone **Dimension(HWL):** 16 x 10 x 10 inch

About the Showpiece: As we all know Lord Budhha statues come in various formations like reclining, standing, sitting, and walking. But from all this his head always remains the same in all postures. The crown of his head represents the deep sense of spirituality, knowledge, and wisdom. His curly hair represents those 108 snails who sacrifice their life to save Lord Buddha, from the hot rays of the sun during his meditative period. The stretched ear depicts his ability to hear the world's sorrow. His closed eyes illustrate the state of deeply indulging in meditation. His smile depicts his better understanding of the universe despite the suffering and the circular dot defines his supernatural vision which can see beyond the material realm. **About Lord**

Buddha: Lord Gautama Buddha was born to a king named Shudhdana of the Shakya clan. His father shielded him from any suffering of human life, raised him with all wealth and opulence until the age of twenty-nine Lord Buddha was married and had a son. But when he finally got the glimpse of what a human face in his life, he was devastated. It makes him realize that illness, old age, and death have nothing to do with wealth or power, it's universal suffering where everyone has to go through. So he left all the luxury life that night and went in search of a way to escape from this pain. It took him six years to be enlightened. Which is known as the awakening self, where he choose the middle path, which was included in his first sermon which he deliver to his dispels about, in Sarnath. and spent the remaining life preaching to others the

path of achieving enlightenment. Buddhas have been taught how to attain salvation from suffering for oneself alone. **Placement and uses of the Showpiece:** For, academic success put the Buddha bust in your kid's room or the study room. Apart from spiritual significance, the showpiece can prove to be a rustic décor piece. Put the bust, on the foyer, sideboard, or create a showcase using a stand with a few figurines. It can amplify the décor in front of a vibrant color wall, so make sure to embellish the background with a darker color to pop. **Care:** The statue makes brilliant impression handling with age, so the cleaning should be done using a broom or cloth periodically over the surface.



4 feet Outdoor Buddha Statue Sandstone

[Read More](#)

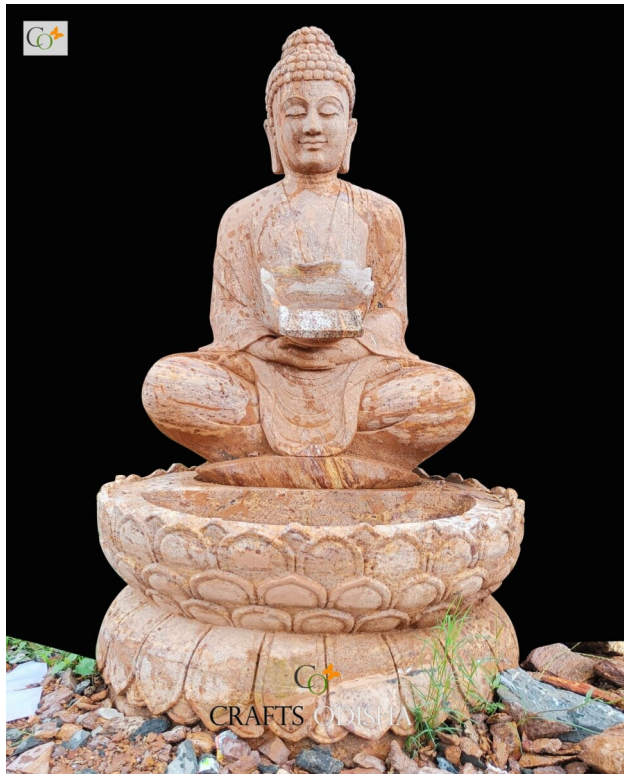
SKU: 01850

Price: ₹80,000.00 inc. GST

Stock: onbackorder

Categories: [Garden Buddha Statue](#), [Buddha Statues](#), [Garden Sculptures](#), [Sitting Buddha Statues](#), [Statues & Sculptures](#)

Product Description



Beautiful Buddha Fountain Water Feature

[Read More](#)

SKU: 01788

Price: ₹120,000.00 inc. GST

Stock: onbackorder

Categories: [Fountain Sculptures](#), [Buddha Statues](#), [Garden Buddha Statue](#), [Garden Sculptures](#), [Sitting Buddha Statues](#), [Statues & Sculptures](#)

Product Description

The beautiful Buddha Fountain Water Features make them as popular for designing a zen garden as different evergreens.

Material: Sandstone

Dimension(HWL): 42 inch

Height: 3.5 feet

Elements of the Buddha fountain garden statue:

- The sculpture is a one-tier fountain for outdoor garden landscaping. A decorative reservoir is used for discharging water.
- The attractive element is the Lord Buddha's statue on the fountain.
- It also attracts birds to bathe and drink in your fountain.

Add class & elegance with one tire fountain for outdoor garden landscaping:

- According to Vaastu, the fountain should be placed on the front of the house, in the southeast and west zone.
- Exhibiting the Buddha fountain in your own garden, park or lawn is very calm and you can easily design it.

- A koi pond with carps, a sand garden, and big stones, moss, and lots of green will help you to create an atmosphere
- Add wooden bridges, pebble-covered areas, water lilies, classical Japanese lanterns, a fountain, some lights, and voila and your garden is ready to allure you.
- Display the Buddha fountain in the courtyard is a perfect place for a little rock garden because it's easier to create low-maintenance conditions there.
- Evergreens are the most popular plants in Japanese gardens. They usually came in different sizes with different shapes carefully mixed together which you can plant around the Buddha fountain.
- Adding some stepping stones toward the fountain would be a soothing idea.
- Adding an area with raked sand to your fountain statue is a great way to represent water.
- Use Subtle color contrast and bold textural near the Buddha fountain.
- Colorful koi and goldfish bring hours of enjoyment beneath the fountain.
- Adding stones and pebbles in different sizes is a great way to achieve this Zen look you're craving for your Buddha fountain.

Advantages of water fountain:

- It brings wealth, fortune, and prosperity.
- Flowing water symbolizes the flow of money, wealth, and positivity. So, keeping outdoor water fountains is considered auspicious.
- Attracts cheerful energy, and tranquility to the atmosphere.
- Its calming and calming trickling sound can lift your mood and make the space peaceful.

How to Clean & care your Buddha fountain:

- Turn off the water fountain before doing any upkeep.
 - Begin it by draining the water from the fountain. Cleanse the decorative item with a sponge to eliminate algae, moss, or any biological growth.
 - The water pump becomes jammed with water, making its natural blockage so clean it using a washcloth or towel, doing this every so often lets the water flow freely.
 - The following method keeps the garden statue more nicely in the long run.
-



Vajra Tara Buddhist Goddess Bust Statue

[Read More](#)

SKU: 01773

Price: ₹170,000.00 inc. GST

Stock: onbackorder

Categories: [Buddha Statues](#), [Garden Buddha Statue](#), [Standing Buddha Statues](#), [Statues & Sculptures](#)

Product Description



Buddha Statue for Home Decor Pink Sandstone

[Read More](#)

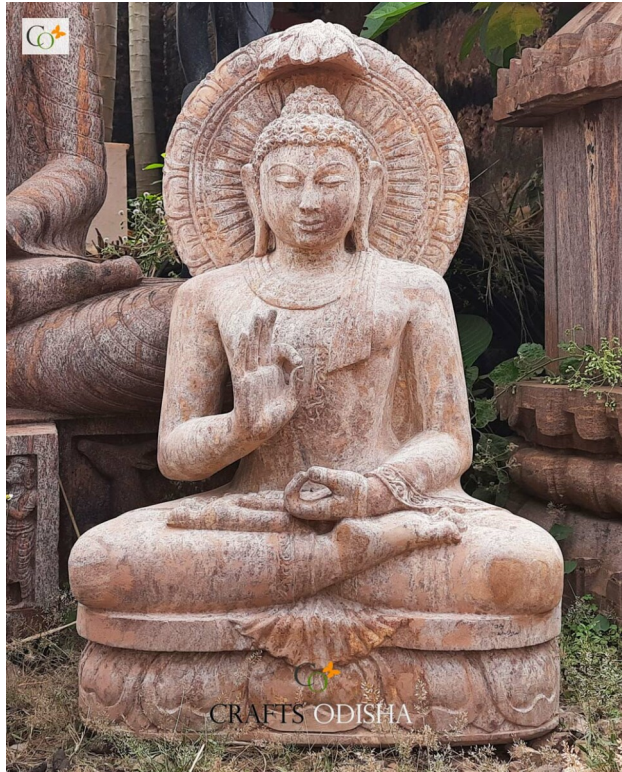
SKU: 01772

Price: ₹90,000.00 inc. GST

Stock: onbackorder

Categories: [Buddha Statues](#), [Garden Buddha Statue](#), [Garden Sculptures](#), [Sitting Buddha Statues](#), [Statues & Sculptures](#)

Product Description



Gautam Buddha Statue Sitting Sandstone 2.5 feet

Gautam Buddha Statue Sitting Sandstone 2.5 feet

[Read More](#)

SKU: 01770

Price: ₹35,000.00 inc. GST

Stock: onbackorder

Categories: [Buddha Statues](#), [Garden Buddha Statue](#), [Sitting Buddha Statues](#), [Statues & Sculptures](#)

Product Description



Abhaya Mudra Buddha Statue for Home 3.5 feet

[Read More](#)

SKU: 01752

Price: ₹75,000.00 inc. GST

Stock: onbackorder

Categories: [Sitting Buddha Statues](#), [Buddha Statues](#), [Garden Buddha Statue](#), [Garden Sculptures](#), [Statues & Sculptures](#)

Product Description



Sandstone 2.5 ft Blessing Buddha Palm Statue for Home and Garden

[Read More](#)

SKU: 01736

Price: ₹34,720.00 inc. GST

Stock: onbackorder

Categories: [Buddha Statues](#), [Garden Buddha Statue](#), [Garden Sculptures](#), [Modern Sculptures](#), [Statues & Sculptures](#)

Tags: [Sand Stone Sculpture Manufacturer](#), [Sand Stone Statue Manufacturer](#), [Sandstone Statue for Outdoor Garden](#)

Product Description

Simple and uncomplicated. A single-hand palm design is easy to intricate any decor theme. The Blessing Buddha Palm Abhayamudra statue allows you for easy coordination.

Material: Sandstone / Khondalite Stone statue

Dimension (HWL): 30 x 18 x 7 inch

Height: 2.5 ft

Description of the statue of Abhayamudra Blessing Buddha palm:

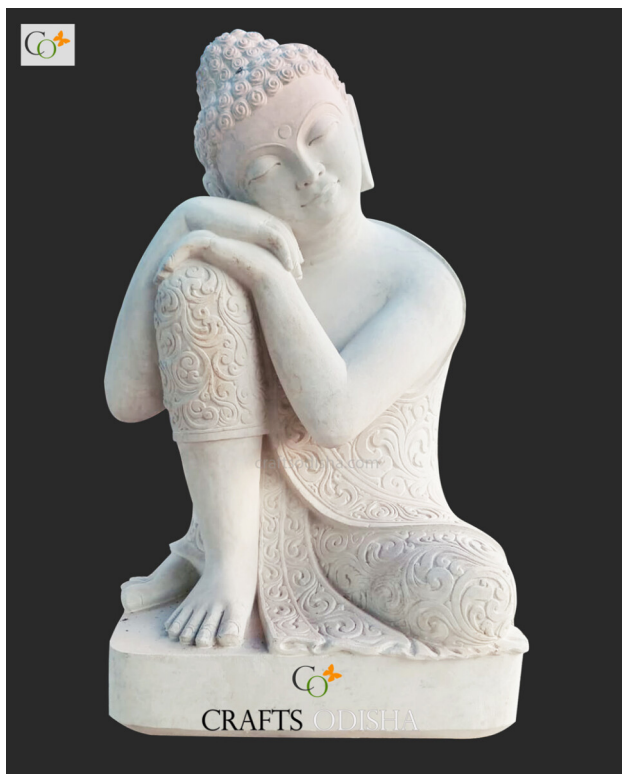
- It's a sculpture of a palm of the Blessing Buddha statue in Abhayamudra or Abhayahasta Mudra.
- In this statue, the thumb and index finger touch, creating a circle that symbolizes an uninterrupted flow of wisdom.
- The other three fingers point up towards the heavens with the palm facing outward.
- This mudra can bring receiving and discussing teachings for growth and awakening into life.

Placement tips of the Blessing Hand Buddha palm statue:

- Create a winding path, that leads your eye past the stone pagoda and invites you to speculate what's around the next corner where you exhibit the palm statue.
- Moss makes a pacific-looking groundcover in moist, shady areas. Because moss doesn't tolerate foot traffic. Placing a stepping stone walkway among the moss to allow passage towards the palm statue will be a great idea.
- Makes an entertaining for viewing the serene landscape with the palm sculpture in the park or landscape with a tea house or pavilion made out of wood or bamboo will be awe-inspiring.
- Stone lanterns shaped as pagodas work well to bring some Japanese style to your sculpture, as well as provide a charming glow in the evening.
- Use subtle color flowers contrast and bold textural differences to create interest in the sculpture.
- Arching branches that reach over the statue will create an architectural form.
- A small reflecting pool or an artificial water feature blends well and brings life to the atmosphere.

Best way to clean the home garden statue:

- Spray the entire surface of the home garden statue using a hose or pipe.
 - Scrub the surface thoroughly with your natural fiber scrub brush or a sponge.
 - After the mold or mildew is removed from the surface rinse it well through the hose spray.
 - Using a dry microfiber cloth, soak up the excess water by rubbing it dry or you can let it air dry.
-



White Sandstone Peaceful Resting Garden Buddha Statue 2.5 ft

[Read More](#)

SKU: 01728

Price: ₹66,000.00 inc. GST

Stock: onbackorder

Categories: [Buddha Statues](#), [Garden Buddha Statue](#), [Sitting Buddha Statues](#), [Statues & Sculptures](#)

Tags: [Buddha Decor for Garden](#), [Buddha Garden Landscaping](#), [Buddha Garden Statue](#), [Buddha Home Decor Statues](#), [Buddha Statue for Home Decor](#), [Buddha Statue Online for Home and Garden](#), [Buddha Stone Sculpture](#), [White Sandstone Statue Manufacturer](#)

Product Description

What could be a better gift or a better option to bring home this buddha idol the symbol of peace and serenity! The white sandstone peaceful resting garden Buddha statue is available with CRAFTS ODISHA site to satisfy your every need for calmness.

Material: Off-white Sandstone statue **Dimension(HWL):** 30 x 18 x 10 inch **Height:** 2.5 ft

Description:

- It's an off-white sculpture, of Lord Buddha, resting on his knee sitting over a pedestal.
- The stone sculptures have given an off-white touch in a gentle way, which represents a journey of transition and stimulates feelings of reflection.
- A magnificent piece of a hand-crafted statue created by the efficient Craftmanship of Odisha sculptors.

Some suggestions for disposition of the home garden statue of Lord Buddha:

- A Garden, lawn, or park is a place where you can sit and observe a blossom, a branch, the shape of a rock, or the curves of circles in the sand for hours, so exhibit the sculpture there to unwind after a hard day's work.

- When a pathway is used for a statue, they encourage mindfulness, opt for natural stone and keep lines curved.
- Place it in your yard, lawn, park, and garden around your plot in peace, taking in the surrounding nature and basking in the greenery of nearby foliage.
- The sound and sight of water are automatically soothing, which is why a fountain is a great addition to displaying near sculptures.
- Surrounding the sculpture with smooth pebbles and then bordered in fine gravel, this sandy-hued style complements the landscape well.
- Try adding a small Acer or two nearby, too. It will bring a touch of color to the scene, whilst its gentle sway in the breeze will enhance the feelings of peacefulness.

Cleaning Technique of the Resting Garden Buddha statue:

- By using a hose or pipe douse the home garden statue as a whole.
- Now when it got drenched scrub the surface using a sponge or soft cloth.
- Again give the home garden statue a final bath & let it air dry. Or you can use a towel to dry the home garden statue.



Dhyana Mudra Meditation Buddha Statue from Off White Sandstone 3 ft

[Read More](#)

SKU: 01727

Price: ₹60,000.00 inc. GST

Stock: onbackorder

Categories: [Buddha Statues](#), [Garden Buddha Statue](#), [Sitting Buddha Statues](#), [Statues & Sculptures](#)

Tags: [Buddha Decor for Garden](#), [Buddha Garden Landscaping](#), [Buddha Garden Statue](#), [Buddha Statue for Home Decor](#), [Buddha Statue Online for Home and Garden](#), [Buddha Stone Sculpture](#), [White Sandstone Statue Manufacturer](#)

Product Description

The Dhyana mudra makes this Buddha statue an excellent choice for meditation areas in your alter. The Dhyana Mudra Meditation Buddha statue from off white Sandtone statue that highlights its rich detailing throughout. Material: Off-white Sandstone statue **Dimension(HWL):** 36 x 25 x 12 inch **Height:** 3ft **Position:** Sitting **About the rustic garden statue of Dhyana Mudra of Lord Buddha:**

- It's a statue of Gautama Buddha in Dhyana Mudra.
- Lord Buddha is sitting on a square plinth in the lotus pose.
- In this form Buddha is seen sitting with his legs folded, face up and hands lying on the lap.
- His eyes are partially closed as he is in deep meditation.

Buddha:

- Buddha means the "Enlightened one".
- Born as a prince with the name of Siddhartha Gautama in Kapilavastu.
- His life takes a massive turn at the age of 29 when he is faced with the suffering of the world.
- He left the luxurious life and meditated under a Bodhi tree to find the answer.
- His preservice was answered after 6 years of meditation.
- Rest of his life he spent teaching others after attaining enlightenment.

Add some peace and tranquil atmosphere to your garden:

- A blossom tree is always a welcome addition to any garden, and incorporating the meditation Buddha statue near it will enhance the tranquil feeling in the environment.
- Fine gravel or sand is one of the most common features, to emplace the statue.
- To recreate the authentic look, add a dedicated gravel area to your plot, perhaps with a border of larger rocks around the sculpture.
- A central tree, such as this impressive Acer, can make a striking focal point and is a means to get creative with sculpture.
- try a circular pattern around a sculpture, whilst the rest of the area can be raked into orderly straight lines for a gentle contrast.
- Add positioning large stones and rocks as focal features in your plot. They will provide a sculptural element in a naturalistic way.

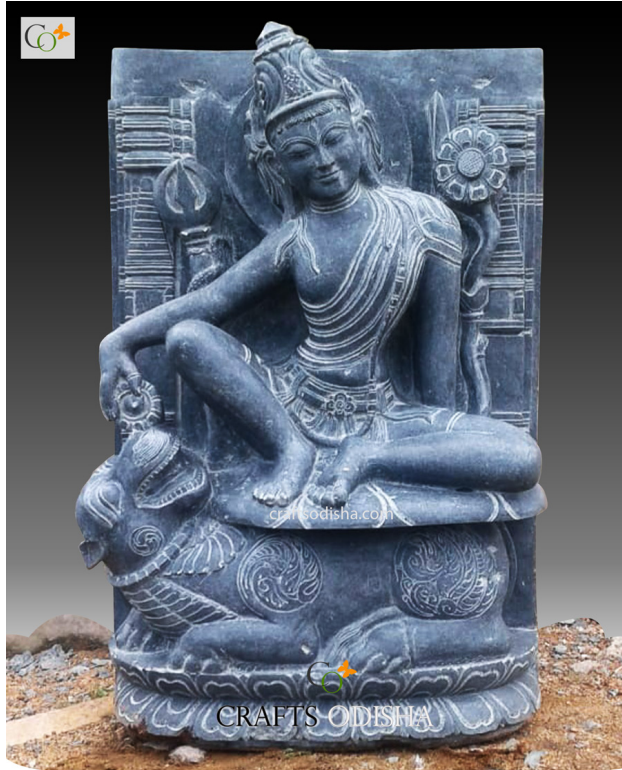
Benefits of the meditating Buddha garden statue:

- You will achieve inner peace by meditating Buddha statue.
- It reduces stress, anxiety, and depression.

- Also, bring peace and harmony to your home and life and unusual problems will fall away.

Tips for cleaning the meditation Buddha statue:

- The procedure should start with housing the statue first.
- When the statue gets wet scrub and rinses it well with a sponge or cotton cloth.
- Once done with rinsing and cleaning all around, now give the statue a final shower and let it air dry.



Granite Stone Simhanada Lokeshvara Buddhist Deity Avalokiteshvara Sculpture

[Read More](#)

SKU: 01689

Price: ₹250,000.00 inc. GST

Stock: onbackorder

Categories: [Sitting Buddha Statues](#), [Buddha Statues](#), [Garden Buddha Statue](#), [Hindu Statues](#), [Shiv Ji Statues](#), [Statues & Sculptures](#)

Tags: [Big Lokeshvara Statue for Outdoor Villa Decoration](#), [Buddhist Sculpture for Home and Garden](#), [Granite Stone Lokeshvara Statue Manufacturer](#)

Product Description

This figuratively ideal granite stone sculpture is a unique way of art, which makes it distinct from the rest. The Simhanada Lokeshvara Avalokiteshvara Buddhist deity offers a touch of the ancient Buddhist Lord.

Material: Blackstone / Granite stone **Dimension(HWL):** 36 x 24 x 10 inch **Position:** Sitting
Height: 3 ft **Annotation of the home garden statue:**

- An alluring statue of Medicine Buddha sitting over an engraved pedestal.
- The form is usually shown as a seated or standing figure with four hands, one of which holds a lotus, an ax, and a container of healing nectar.

- A unique sculpt made on special demand by customers, which is intricately carved by our efficient sculptor.

Simhananda Lokeshvara:

- Avalokiteshvara is the epitome of the compassion of all buddhas.
- Avalokiteshvara Sanskrit: avalokita, “looking on”; ishivara, “Lord”.
- These specific forms he represents as a wealth and powerful deity.
- Avalokiteshvara is shown here begins with Simhanada, white in color, and riding a lion. Simhanada represents compassion and the overcoming of disease and ailments. The second form is a power Lokeshvara, red in color, seated, possessing four arms.
- Avalokiteshvara supremely personifies the Bodhisattva's resolve to postpone his Buddhahood until he has helped every conscious being on earth achieve liberation (Moksha; means, “release”) from suffering and the process of death and rebirth.
- His name has been variously interpreted as “the lord who looks in every direction” and “the lord of what we see”.

Where to place the decorative piece of the garden statue:

- The statue of Lord Buddha should always face the East or Northeast.
- Placed it in the Zen garden along with some lanterns to enhance the look after nightfall.
- The alter and entrance of the home also be a welcoming place to exhibit the statue.
- Draw the eye and make it a focal point, by executing the statue near curated bushes and shrubs.
- A water feature can do magic to the sculpture.

Few blessings from the sacred statue:

- Avalokiteshvara protects against shipwreck, fire, assassins, robbers, and wild beasts.
- And bestows all walks of life of his disples.

Easiest procedure for cleaning the garden statue :

- Get going by showering the statue using a hose spray to wet the sculpture all over, when it gets doused scrub & detached any algae, moss, or debris from its surface using a bristle brush or sponge.
- When all the dust amasses got detached, bathe the home garden for a final time and let it air dry.
- Cleaning the sculpture twice or once a year will preserve its beauty and looks for years.



Big Granite Mugini Stone Blessing Buddha Statue for Outdoor

[Read More](#)

SKU: 01688

Price: ₹450,000.00 inc. GST

Stock: onbackorder

Categories: [Buddha Statues](#), [Garden Buddha Statue](#), [Sitting Buddha Statues](#), [Statues & Sculptures](#)

Tags: [Big Buddha Statue for Outdoor](#), [Black Granite Stone Statue Manufacturer](#), [Black Stone Buddha Statue](#), [Blessing Buddha Statue](#), [Buddha Decor for Garden](#), [Buddha Garden Landscaping](#), [Buddha Garden Statue](#), [Buddha Home Decor](#), [Buddha Home Decor Statues](#), [Buddha Statue for Home Decor](#), [Buddha Stone Sculpture](#), [Buddha Stone Statue for Interior Designing](#), [Buddha Stone Statue Manufacturer](#), [Granite Stone Buddha Statue](#), [Sitting Lord Buddha Statue](#)

Product Description



Pink Sandstone Stone Sitting Buddha God Statue for Home and Garden

[Read More](#)

SKU: 01645

Price: ₹85,000.00 inc. GST

Stock: onbackorder

Categories: [Buddha Statues](#), [Garden Buddha Statue](#), [Sitting Buddha Statues](#), [Statues & Sculptures](#)

Tags: [Bansi Paharpur Stone Buddha Statue](#), [Buddha Decor for Garden](#), [Buddha Garden Landscaping](#), [Buddha Garden Statue](#), [Buddha Home Decor Statues](#), [Buddha Statue for Home Decor](#), [Buddha Statue for Table Decor](#), [Buddha Statue Online for Home and Garden](#), [Buddha Stone Statue Manufacturer](#), [Meditation Buddha Statue](#), [Sandstone Stone Buddha Statue Manufacturer](#)

Product Description



Sandstone Weathered Buddha Head Statue for Home and Garden Decor

[Read More](#)

SKU: 01642

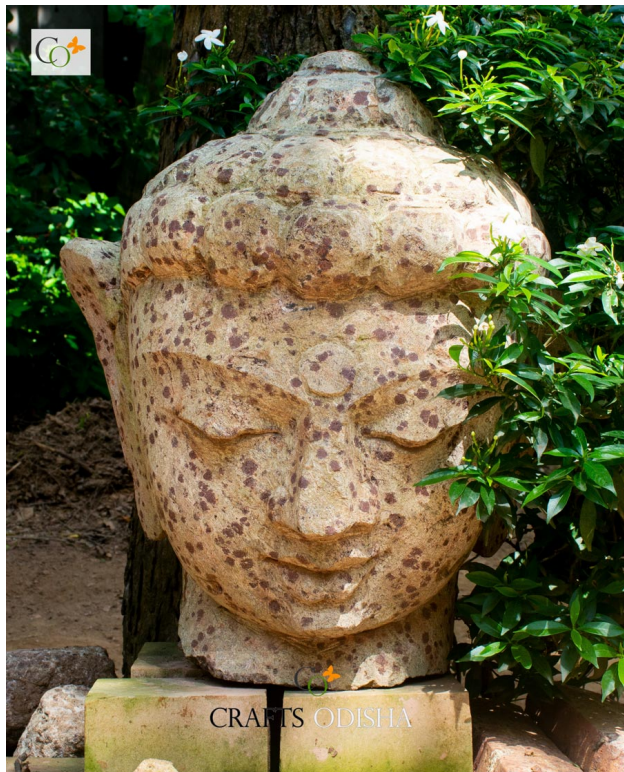
Price: ₹23,000.00 inc. GST

Stock: onbackorder

Categories: [Buddha Statues](#), [Buddha Head Statues](#), [Garden Buddha Statue](#), [Statues & Sculptures](#)

Tags: [Buddha Head Idols](#), [Buddha Head Sculpture](#), [Buddha Head Stone Statue For Garden](#), [Stone Buddha Head Statue Manufacturer](#)

Product Description



Baulamala Stone Beautiful Buddha Head Statue for Outdoor Garden

[Read More](#)

SKU: 01622

Price: ₹40,000.00 inc. GST

Stock: onbackorder

Categories: [Buddha Head Statues](#), [Buddha Statues](#), [Garden Buddha Statue](#), [Statues & Sculptures](#)

Tags: [Baulamala Sandstone Statue Manufacturer](#), [Big Buddha Statue for Outdoor](#), [Buddha Head Idols](#), [Buddha Head Sculpture](#), [Buddha Head Stone Statue For Garden](#), [Buddha Stone Sculpture](#), [Buddha Stone Statue Manufacturer](#)

Product Description



Sandstone Buddha God Earth Touching Sitting Statue

[Read More](#)

SKU: 01615

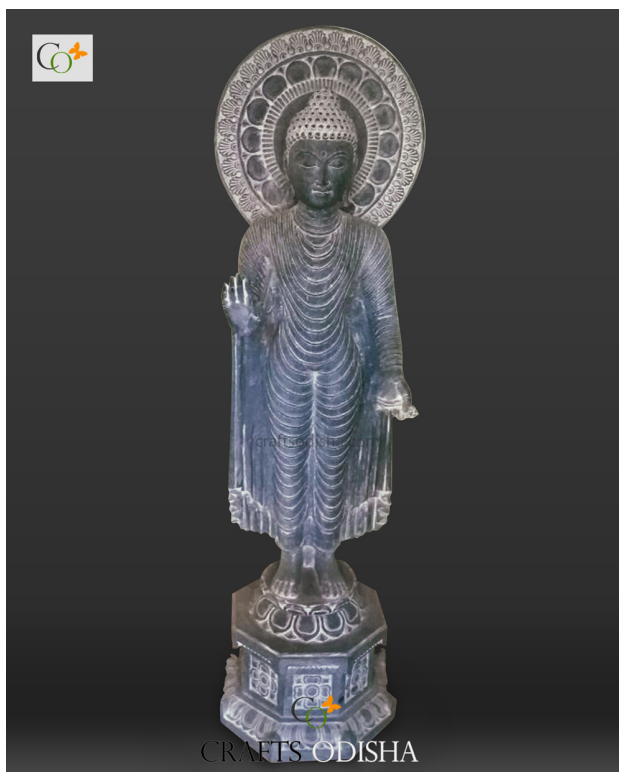
Price: ₹42,000.00 inc. GST

Stock: onbackorder

Categories: [Garden Buddha Statue](#), [Buddha Statues](#), [Sitting Buddha Statues](#), [Statues & Sculptures](#)

Tags: [Big Buddha Statue for Outdoor](#), [Buddha Decor for Garden](#), [Buddha Garden Landscaping](#), [Buddha Garden Statue](#), [Buddha Home Decor Statues](#), [Buddha Statue Online for Home and Garden](#), [Sandstone Buddha Statue](#), [Sandstone Stone Buddha Statue](#), [Manufacturer](#)

Product Description



Standing Buddha Blessing Buddha Statue Decor

[Read More](#)

SKU: 01552

Price: ₹210,000.00

Stock: onbackorder

Categories: [Garden Buddha Statue](#), [Garden Sculptures](#), [Statues & Sculptures](#)

Tags: [Big Buddha Statue](#), [Stone Statue Manufacturer](#), [Buddha Decor for Garden](#), [Buddha Garden Landscaping](#), [Buddha](#)

[Decor](#), [Buddha Home Decor Statues](#), [Buddha Home Statue](#), [Buddha Stone Sculpture](#), [Buddha Stone Statue Manufacturer](#), [Craft Decoration for Home](#), [Decorative Statues for Home](#), [ft Buddha Statue](#), [Granite Stone Buddha Statue](#), [Hindu God and Goddess](#), [home décor](#), [Home Statue Decor](#), [Indian Statues](#), [Lord Buddha Idols](#), [Muguni Stone Statue](#)

Product Description

This Standing Granite Black Stone Blessing Buddha Home Garden Statue 4 ft is fine craftsmanship from the lands of Odisha. A traditional and subtle sculpture with a distressed finish engaging impression through its great size. This gigantic traditional and subtle sculpture depicts the distressed Buddha and to behold your gaze. To add tranquility to your kickback area use this piece of great Kalingan art. Place it in your kickback area would add tranquility.

Material: Black stone / Granite Stone **Dimension(HWL):** 48 x 24 x 14 inch **Height:** 4 ft

Position: Standing

The story behind Budhha's posture in this granite statue: This posture indicates the story of the day after having attained enlightenment when he is ready to teach the four noble truths to people. Here Buddha is standing with his right hand raised towards the shoulder, gesturing to the Abhayamudra, and his feet are planted firmly on the ground. In Sanskrit Abhay means fearlessness. So here Budhha is providing the wisdom that'll remove the fear of the unknown. And his left-hand hangs down on the side of his body. His facial expression shows that he is at peace with life. **About Lord Buddha:** Siddhartha Gautama, the son of king Shudhodana and Queen Maya of the Shakya clan. A presage was given at his naming ceremony, that either he would be a powerful king or a spiritual leader. Although his father tried every effort to keep him away from all means of suffering and sorrows of life, raised him with wealth and luxury. At the age of twenty-nine, he was already married, and had a son. Then one day he saw an old-aged man, a sick person, at a funeral and a religious ascetic. He realizes life is full of suffering, which arises from want or loss. So he decided to leave the lavish life, that he was leading so far, in search of a way to escape from this suffering. It took him six long years to find the answer to all his quests, which he discovered finally by meditating forty-nine days under a fig tree, near Bodh Gaya. He attained enlightenment and became "Buddha" and hence became the founder of Buddhism. Buddha means "a person who is awake" or "a knower". In his enlightenment, he discovered the mind is at total peace, and the soul is merged with the universe. This state of mindfulness arises only when a person's desire and sufferings go away completely. **How to make a statement with this beautiful statute at your place: Using this craft decoration for home, office, and lawn:** Place this graceful statue near a water body, or fountain, close to a pillar. You can keep it in your garden or lawn area for a soothing

atmosphere, with plants, flowers, and trees beneath it adding more rejuvenation to the propitiate. You can place it close to a water body or fountain, along a sidewalk, your restaurant, or park that you just designed, etc. As it represents the earth element, so placing this Buddha statue in the Northeast, southwest, and center will be more auspicious according to Vastu. **How to clean to get rid of dust:** Cleaning the Buddha statute should be a pain. With a dry cloth or broom, it is enough to get rid of the dirt. Clean it once every month to keep your garden or home looking stunning. **More about the black stone and carving:** The traditional art form of Stone Carving is one of the oldest continuing traditions in the world in Odisha, especially at Ratnagiri, Lalitgiri, and Udaygiri and in and around Puri. So bring a piece of history of 2nd century India to your home.



Sandstone Laughing Buddha Statue for Money - Home and Garden

[Read More](#)

SKU: 01542

Price: ₹30,000.00 inc. GST

Stock: onbackorder

Categories: [Garden Buddha Statue](#), [Buddha Statues](#), [Garden Sculptures](#), [Sitting Buddha Statues](#), [Statues & Sculptures](#)

Tags: [Big Buddha Statue for Outdoor](#), [Buddha Decor for Garden](#), [Buddha Garden Landscaping](#), [Buddha Garden Statue](#), [Buddha Home Decor](#), [Buddha Home Decor Statues](#), [Buddha Home Statue](#), [Buddha Stone Sculpture](#), [Buddha Stone Statue Manufacturer](#), [Craft Decoration for Home](#), [Decorative Statues for Home](#), [ft Buddha Statue](#), [Hindu God and Goddess](#), [home décor](#), [Home Statue Decor](#), [Indian Statues](#), [Laughing Buddha Stone Statue for Home and Garden](#), [Lord Buddha Idols](#), [Sand Stone Buddha Statue](#), [Sandstone Buddha Statue](#)

Product Description

Sandstone Laughing Buddha Statue for Money – Home and Garden, is a symbol of copiousness, indulgence, and good fortune. The showpiece is able to foreground the beauty of your personal

space.

Material: Sandstone/Redstone **Height:** 2 ft **Dimension(HWL):** 24 x 16 x 12 inch **Position:** Sitting

Called "Budai" in Chinese. The Chinese zen monk, considered to be a man of good and loving character. A sitting posture of Buddha is assessed to be the stability of thoughts and quietude. The Chinese monk is usually depicted as a roly-poly, bald-headed, laughing with a rotund stomach. He holds a lot of significance with his posture in our life. The idol has been seen in a meditation pose, has both the palms on his lap holding balls of wealth, half-closed eyes, and smiling. The monk with balls represents the practice of meditation. The ball is considered to be the ball of wealth. The smiling Buddha holding balls in both hands illustrate affluence and clover. It is believed that by consuming all the negative energy he develops the potbelly. In India, he resembles Kubera, the deity of prosperity. The statue is said to bring fulfillment and calmness to the environment where it is placed. Not only brings a stick of luck but also strengthens and mends all the sectors of your life in a positive way. The stone or brown paint laughing buddha statue associate with the earth factor. Earth represents steadiness, subsistence, and grounding. Rubbing his belly is believed to bring more prosperity in life.

Placing: To bring harmony and happiness, place him in the east direction of your desired place. Placing him in the southeast was believed to increase in wealth. For gaining wisdom place him in the northeast. If you are willing to keep him at any entrance then make his face inside the main door. The garden is also a part of your home and connected to nature, so keeping him in the garden area will energize the spirit of nature as well as welcomes joy and laughter in your home and life. **Care:** The statue has fine polishing, dusting with a cloth or broom is sufficient to maintain the glossiness of the sculpture.



Pink Soft Stone Khanja Work Buddha Decorative Statue for Home

[Read More](#)

SKU: 01539

Price: ₹160,000.00 inc. GST

Stock: onbackorder

Categories: [Sitting Buddha Statues](#), [Buddha Statues](#), [Garden Sculptures](#), [Statues & Sculptures](#)

Tags: [Buddha Home Decor](#), [Buddha Home Decor Statues](#), [Buddha Home Statue](#), [Buddha Stone Sculpture](#), [Buddha Stone Statue Manufacturer](#), [Craft Decoration for Home](#), [Decorative Statues for Home](#), [ft Buddha Statue](#), [Hindu God and Goddess](#), [home décor](#), [Home Statue Decor](#), [Indian Statues](#), [Lord Buddha Idols](#), [Pink Stone Soap Stone Statue Manufacturer](#)

Product Description

Pink Soft Stone Khanja Work Buddha Decorative Statue for Home, is a brilliant piece of engraved stonework of art. Expressive detailing, rich stone finish, with a glossy earthy glaze, made the statue worth looking at.

Material: Pink stone/ Soapstone **Dimension(HWL):** 24 x 16 x 10 inch **Position:** Sitting Buddha the "awakened one". A prince who left his palace, leaving all material comfort in search of enlightenment. Buddha statue represents the life and teaching of Gautama Buddha. His posture, expression, hand gestures are notable. Serve those teaching in everyday life. The posture is called "Asana" and the hand gesture is called "Mudra". Here this posture of buddha is called "**Amithabha Buddha**" which means "**Boundless Light**". In this pose he is sitting on a lotus throne, both hands face up in the lap or you can say dhyana mudra (an ancient gesture of meditation), his eyes are fully closed as represent focused concentration, his leg crossed and sole of the feet turned upward. Lotus signifies overcoming struggles in our life. There was a time when he was in meditation so deep that he couldn't notice the rains and floods comes to sweep him away, the seven-headed snake king saw this and wrapped his coils around him, and lifted him out of the water. Then spread his hood over the top of the buddha to protect him, as we saw in this statue. Meditating Buddha typifies peace and placid in life. Seeing his divine image teaches us to remember that difficulties in the road to enlightenment are part of our

journey, it helps to rebuild fortitude, purge our negative thoughts, and ingrain self-respect. Not only a great piece of decor it also amplifies the calmness of the interior. Create positive vibes in the space. Buddha cultivates your knowledge, stability. If the Buddha is of Earth tone, represent self-care and well-being. Keeping mediating stone Buddha statue at home extends peacefulness, rest of the senses as well as for everyone seeking serenity. **Placing:** The bigger the Buddha, the more fortune it can fetch. To reap the benefits of the statue, place it in a quiet corner of your home where you can sit and meditate, make sure the statue is placed at your eye level. You can also light up the incense sticks or Diya to spread the vibe all around. **Care:** Wipe the statue with a cloth, you can also use a small brush to reach the engraved part.



Sitting Teaching Buddha Home Decor Statue Made of Sandstone

[Read More](#)

SKU: 01538

Price: ₹60,000.00 inc. GST

Stock: onbackorder

Categories: [Garden Buddha Statue](#), [Buddha Statues](#), [Garden Sculptures](#), [Sitting Buddha Statues](#), [Statues & Sculptures](#)

Tags: [Big Buddha Statue for Outdoor](#), [Buddha Decor for Garden](#), [Buddha Garden Landscaping](#), [Buddha Garden Statue](#), [Buddha Home Decor](#), [Buddha Home Decor Statues](#), [Buddha Home Statue](#), [Buddha Stone Sculpture](#), [Buddha Stone Statue Manufacturer](#), [Craft Decoration for Home](#), [Decorative Statues for Home](#), [ft Buddha Statue](#), [Hindu God and Goddess](#), [home décor](#), [Home Statue Decor](#), [Indian Statues](#), [Lord Buddha Idols](#), [Sand Stone Buddha Statue](#), [Sandstone Buddha Statue](#)

Product Description

Sitting Teaching Buddha Home Decor Statue Made of Sandstone is more than just ornamentation. Simple and elegant fit with indoor as well as outdoor furnish.

Material: Sandstone/Redstone **Height:** 3 ft (approx.) **Dimension(HWL):** 36 x 24 x 12 inch

Position: Sitting

His teaching formed the foundation for Buddhist philosophy. His philosophy is the middle way between assertiveness and incredulity. His basic teaching is the four noble truths. Noble truths "Aryastaya", Arya means a noble person, Satya means truth and reality. A noble person in an ethical and spiritual sense. The four noble truths are:

- The reality of suffering (within the samsara)
- Origin of suffering (mental states that generate suffering)
- End of suffering. (with peace, higher knowledge)
- The eighth fold path

Teaching Buddha statue is seen sitting comfortably on a lotus, with fully closed eyes. both legs folded, with the sole of feet face upward. Right hand raised to shoulder level with the tip of the index and thumb forming a circle (wheel of dharma), palm facing outward. while the left hand forming the same circle with the figures and resting in the lap facing upward. His raised right hand represents protection, while the second represents conquering fear. The teaching Statue depicts the life of the Buddha after achieving enlightenment when he first preaches his teaching. Known as "Dharma chakra Buddha". The most important phase of his life, where he shared all the knowledge during his enlightenment period with his disciples. Intellect, understanding, and fulfilling destiny represent Buddha's teaching statue. The statue can stimulate the energy of any corner where it is placed. It balances the inner peace. **Placing:** As it is a symbol of teaching you can place it in the northeast corner of your home, office, or garden. Ideal for those seeking knowledge, and spiritual growth. Placing it in the north sector boost career. Basically, if the Buddha statue is made from clay/stone, can be placed in the northeast, southwest, or in center to energize the earth element. **Care:** Very easy to dust, gently wipe the Buddha statue with a cloth or broom enough to prevent any dirt compile.



6 ft Decorative Sandstone Sitting Buddha Statue under Granite Tree

[Read More](#)

SKU: 01537

Price: ₹475,000.00 inc. GST

Stock: onbackorder

Categories: [Garden Buddha Statue](#), [Buddha Statues](#), [Garden Sculptures](#), [Sitting Buddha Statues](#), [Statues & Sculptures](#)

Tags: [Big Buddha Statue for Outdoor](#), [Black Granite Stone Statue Manufacturer](#), [Buddha Decor for Garden](#), [Buddha Garden Landscaping](#), [Buddha Garden Statue](#), [Buddha Home Decor](#), [Buddha Home Decor Statues](#), [Buddha Home Statue](#), [Buddha Stone Sculpture](#), [Buddha Stone Statue Manufacturer](#), [Craft Decoration for Home](#), [Decorative Statues for Home](#), [ft Buddha Statue](#), [Hindu God and Goddess](#), [home décor](#), [Home Statue Decor](#), [Indian Statues](#), [Lord Buddha Idols](#), [Museum Statue](#), [Sand Stone Buddha Statue](#), [Sandstone Buddha Statue](#), [Statue for Museum](#)

Product Description

6 ft Decorative Sandstone Sitting Buddha Statue under Granite Tree, is a masterpiece, able to leave a lasting impression on your guest. The earthy color with rugged texture gives the statue a deeply aged look. **Material:** Sandstone/Redstone (Buddha) and Blackstone/Granite (Dali work/ Tree) **Dimension (HWL):** 72 x 48 x 30 inch **Height:** 6 ft **Position:** Sitting Siddhartha Gautama, son of an Indian king, left all the luxury and royal life in search of enlightenment. The prince with his will, wisdom, and determination became the Buddha, attaining the highest possible mode of perfection. All of his teachings can be recapitulated in one word " Dhamma" which means truth. The principle of righteousness. Buddha has pleaded to become noble, not to please any other, but to be true to one's self. The only way to free yourself from suffering is the Dhamma than you can escape misery and attain nirvana. He discovers four noble truths: **The truth of suffering, the cause of suffering, the end of suffering, and the path that leads to the end of suffering.** Suffering can be

mental or physical. Here the Buddha sitting under a tree, Both legs folded, sole of feet in upward faced. Both hands face up in the lap making a triangle with both the thumb which represents stability. Eyes completely closed represents deep meditation. The dot in the center of his forehead symbolizes wisdom. This form illustrates peace and calm. The pose widely recognizes as "Amitabha Buddha " which is means "boundless night. The Buddha statue is not only a décor piece for home or gardens, it also energizes inner peace, abundance, and de-stress. Placing him in work station amplifies success and wealth. Accumulates a positive vibe.

Placing: According to Feng-Sui meditating statue of Buddha should face east direction because during his search for enlightenment Lord Buddha used to meditate when the sun rising. Keep the area clean always around the statue. remember to put him at eye level. This beautiful statue can be used in garden decoration, fountain decoration, swimming pool decoration, landscaping design, interior designing, outdoor or home decoration, this Statue can be used in temples or puja. You can also use it as an outdoor statue. **Care:** The durable stone statue can be cleaned with water. Gently wipe with a cloth or broom will prevent the dirt from accumulating.
