



Pink Red Stone Lamp Post for Garden Landscaping

[Read More](#)

SKU: 01580

Price: ₹50,400.00 inc. GST

Stock: onbackorder

Categories: [Garden Lamp Posts](#), [Garden Sculptures](#), [Hindu Statues](#), [Other God/Godess Statues](#), [Statues & Sculptures](#)

Tags: [Garden Stone Lamp Posts](#), [Outdoor Stone Lamp Posts](#), [Stone Lamp Posts for Export](#), [Stone Lamp Posts for Home](#), [Stone Lamp Posts for Hotel](#), [Stone Lamp Posts for Landscape Design](#), [Stone Lamp Posts Manufacturer](#), [Stone Lamp Shades](#), [Stone Lamps for Home Decor](#), [Stone Lawn Lamp Posts](#), [Stone Parking Lamp Posts](#), [Street Stone Lamp Posts](#)

Product Description



Teakwood Stone Garden Outdoor Lamp Post

[Read More](#)

SKU: 01579

Price: ₹49,280.00 inc. GST

Stock: onbackorder

Categories: [Garden Lamp Posts](#), [Garden Sculptures](#), [Hindu Statues](#), [Other God/Godess Statues](#), [Statues & Sculptures](#)

Tags: [Garden Stone Lamp Posts](#), [Outdoor Stone Lamp Posts](#), [Stone Lamp Posts for Export](#), [Stone Lamp Posts for Home](#), [Stone Lamp Posts for Hotel](#), [Stone Lamp Posts for Landscape Design](#), [Stone Lamp Posts Manufacturer](#), [Stone Lamp Shades](#), [Stone Lamps for Home Decor](#), [Stone Lawn Lamp Posts](#), [Stone Parking Lamp Posts](#), [Street Stone Lamp Posts](#)

Product Description

An eco-friendly hand-crafted & hand-finished classic sleek homey garden outdoor lamp post allows the light to dance through its cutout windows. Material: Teakwood stone Statue **Dimension(HWL):** 54 x 12 x 12 inch **Height:** 4.5 ft **Discourse:**

- A beautiful teak wood stone lamppost sculpture is described here.
- A sleek curated piece of art, standing over a plinth. The pedestal has a light fixture house atop it.
- The light fixture house is where you can insert your light bulb, with a design carved around it where the light can disperse easily.

Illumination ideas for garden landscaping:

- Incorporate lamps along the pathway and walkway of the garden, park, or lawn.
- Rock gardens with sidewalk edges, also look amazing beside the lampposts.
- Flowery plants and bold flowers complement the base of the lamp and make it the center of attraction.
- Incorporate it along the driveway to make the path illuminated.

- For a unique look, don't hesitate to plant the lamppost on the lounge, patio, or deck.
- Two lampposts by the entryway on each side of your home, park, or restaurant will distribute light nearby in a gentle way.
- If your garden has a pond, pool, or fountain then add a lamp on the pathway, or walkway beside it, which reflects on the water and will create a magical view after sundown.
- The pergola and the gazebo are fantastic ways to elevate the decor with the lamp.
- Using sleek concrete garden edging surrounded by attractive garden flowers beneath the lamp will heighten the sense of laidback.
- Beautiful flower beds and borders with few trees make a straight line with a lamp that relaxes you after a hard day.
- Give a wonderful look by incorporating beside a figurine, to highlight the sculpt amazingly.

Dusting guide:

- Every art structure needs some care and maintenance to keep the charm and longevity.
 - Don't need to get stressed out, it will not require much time and effort. With a few steps of dusting,& you are done.
 - So before the dusting, turn off the circuit breaker, for safety precautions.
 - Now separate each part of the lamppost, and take out the bulb by using a rag or glove.
 - Take a dusting brush or feather brush to dust away from the spider wave, dust, and bug debris. Also, wipe down the light bulb as dust must be collected over its surface.
 - Once all the parts are cleaned, put them back into the previous form, and enjoy the illumination.
-



Yellow Teakwood Stone Small Garden Lamp Post

[Read More](#)

SKU: 01578

Price: ₹14,560.00 inc. GST

Stock: onbackorder

Categories: [Garden Lamp Posts](#), [Garden Sculptures](#), [Hindu Statues](#), [Other God/Godess Statues](#), [Statues & Sculptures](#)

Tags: [Garden Stone Lamp Posts](#), [Outdoor Stone Lamp Posts](#), [Stone Lamp Posts for Export](#), [Stone Lamp Posts for Home](#), [Stone Lamp Posts for Hotel](#), [Stone Lamp Posts for Landscape Design](#), [Stone Lamp Posts Manufacturer](#), [Stone Lamp Shades](#), [Stone Lamps for Home Decor](#), [Stone Lawn Lamp Posts](#), [Stone Parking Lamp Posts](#), [Street Stone Lamp Posts](#)

Product Description

This yellow teakwood stone small garden lamp post showcases an unconventional take on lighting concept. It is highly adaptable to a wide range of lighting needs.

Material: Teakwood stone statue **Dimension(HWL):** 18 x 9 x 9 inch **Height:** 1.5 ft **Feature of the decorative stone:**

- A tier-based lamp post is described here, that is made from Sandstone which looks alike teakwood.
- Spacious hollows are carved so the light can disperse widely.
- This carving shows how a simple stone can turn into a magnificent one when went into a proficient hand.

Transform your outdoor space with our expert tips:

- The 1.5 ft lamp can highlight a deck with stairs, porch, or patio ensuring one will not trip over in dark.
- Give your guest a warm welcome by incorporating the lamp in the entrance of your home.

- Besides Garden gnomes, the small flower beds light up a strong presence in your park, garden, or landscaping.
- Make a series on the edge of driveways that will look brilliant after sundown.
- Incorporate it in your pathway home, not only improve curb appeal but also make walking along the path safer.
- Add real drama to your outdoor water features like a swimming pool, fountain, or pond, illuminating walkways lead to the water feature add some near the water so the reflection can be seen through the water.
- Go one step ahead and mounted the lamp post on top of a wall.

Follow our little and easy advice to clean up your decorative stone:

- Lighting is one of the important features of outdoor illumination and also adds a wow factor to your exterior decor.
 - Cobwebs and loose dust often accumulates, which diminishes their sparkle, which needs cleaning. Make this chore easier with our easy tips and suggestion.
 - Before starting cleaning makes sure the electricity is turned off. Take the bulb out of the fitting using protective gloves, and let it cool down.
 - The lamp post is detachable so that each piece can be cleaned in properly. Now using of lint-free cloth wipe the light bulb. Use a dust broom to buff the cobwebs, and dust each one properly.
 - Once you are done with dusting, reassemble the lamp post, and enjoy the illumination.
 - Twice a year or as per requirement clean the lamp post with water by rinsing and detaching all the grime and moss with a coco bru.
-



Pink Red Stone Lamp Post for Garden - 1 Piece

[Read More](#)

SKU: 01577

Price: ₹61,600.00 inc. GST

Stock: onbackorder

Categories: [Garden Lamp Posts](#), [Garden Sculptures](#), [Hindu Statues](#), [Other God/Godess Statues](#), [Statues & Sculptures](#)

Tags: [Garden Stone Lamp Posts](#), [Outdoor Stone Lamp Posts](#), [Stone Lamp Posts for Export](#), [Stone Lamp Posts for Home](#), [Stone Lamp Posts for Hotel](#), [Stone Lamp Posts for Landscape Design](#), [Stone Lamp Posts Manufacturer](#), [Stone Lamp Shades](#), [Stone Lamps for Home Decor](#), [Stone Lawn Lamp Posts](#), [Stone Parking Lamp Posts](#), [Street Stone Lamp Posts](#)

Product Description



Temple Style Pot - Basil Planter Gamla

[Read More](#)

SKU: 01555

Price: ₹106,400.00
89,600.00Current price

Stock: onbackorder

Categories: [Garden Lamp Posts](#), [Garden Sculptures](#), [Hindu Statues](#), [Other God/Godess Statues](#), [Statues & Sculptures](#), [Accessories](#)

Tags: [Basil Planter](#), [Chaura](#), [Tulsi Chaura](#)

[Planter](#), [Tulsi Pot](#), [Tulsi Stand](#)

Product Description



Sand Stone Vastu Devi Tulsi - Tulasi Planter - Tulsi Gamla - Basil Planter

[Read More](#)

SKU: 01554

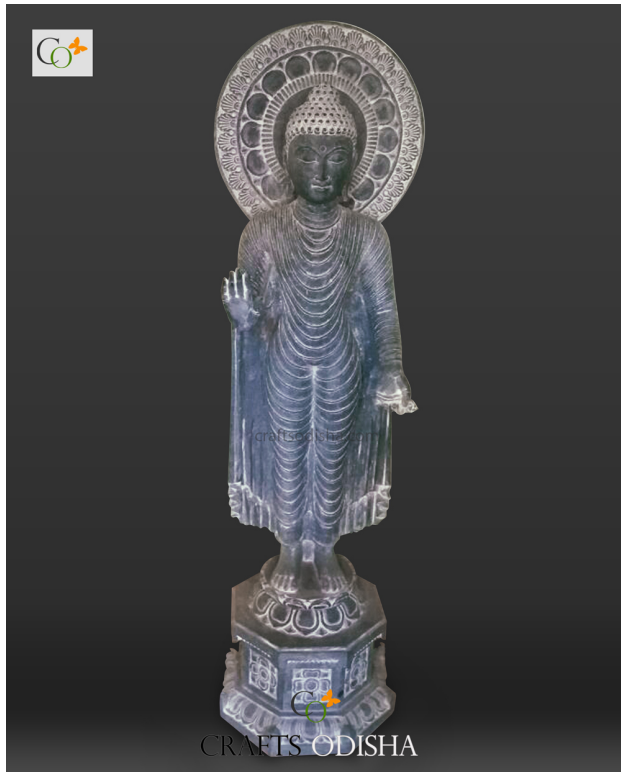
Price: ₹50,000.00 inc. GST

Stock: onbackorder

Categories: [Stone Accessories](#), [Garden Sculptures](#), [Hindu Statues](#), [Other God/Godess Statues](#), [Statues & Sculptures](#)

Tags: [Basil Planter](#), [Stone Tulsi Pot for Garden](#), [Tulsi Chaura](#), [Tulsi Chaura for Home](#), [Tulsi Gamla](#), [Tulsi Pot](#), [Tulsi Stand](#)

Product Description



Standing Granite Black Stone Blessing Buddha Home Garden Statue Decor 4 ft

[Read More](#)

SKU: 01552

Price: ₹210,000.00 inc. GST

Stock: onbackorder

Categories: [Garden Buddha Statue](#), [Buddha Statues](#), [Garden Sculptures](#), [Standing Buddha Statues](#), [Statues & Sculptures](#)

Tags: [Big Buddha Statue for Outdoor](#), [Black Granite Stone Statue Manufacturer](#), [Black Stone Buddha Statue](#), [Buddha Decor for Garden](#), [Buddha Garden Landscaping](#), [Buddha Garden Statue](#), [Buddha Home Decor](#), [Buddha Home Decor Statues](#), [Buddha Home Statue](#), [Buddha Stone Sculpture](#), [Buddha Stone Statue Manufacturer](#), [Craft Decoration for Home](#), [Decorative Statues for Home](#), [ft Buddha Statue](#), [Granite Stone Buddha Statue](#), [Hindu God and Goddess](#), [home décor](#), [Home Statue Decor](#), [Indian Statues](#), [Lord Buddha Idols](#), [Muguni Stone Statue](#)

Product Description

This Standing Granite Black Stone Blessing Buddha Home Garden Statue 4 ft is fine craftsmanship from the lands of Odisha. A traditional and subtle sculpture with a distressed finish engaging impression through its great size. This gigantic traditional and subtle sculpture depicts the distressed Buddha and to behold your gaze. To add tranquility to your kickback area use this piece of great Kalingan art. Place it in your kickback area would add tranquility.

Material: Black stone / Granite Stone **Dimension(HWL):** 48 x 24 x 14 inch **Height:** 4 ft

Position: Standing

The story behind Buddha's posture in this granite statue: This posture indicates the story of the day after having attained enlightenment when he is ready to teach the four noble truths to people. Here Buddha is standing with his right hand raised towards the shoulder, gesturing to the Abhaya Mudra, and his feet are planted firmly on the ground. In Sanskrit Abhaya means fearlessness. So here Buddha is providing the wisdom that'll remove the fear of the

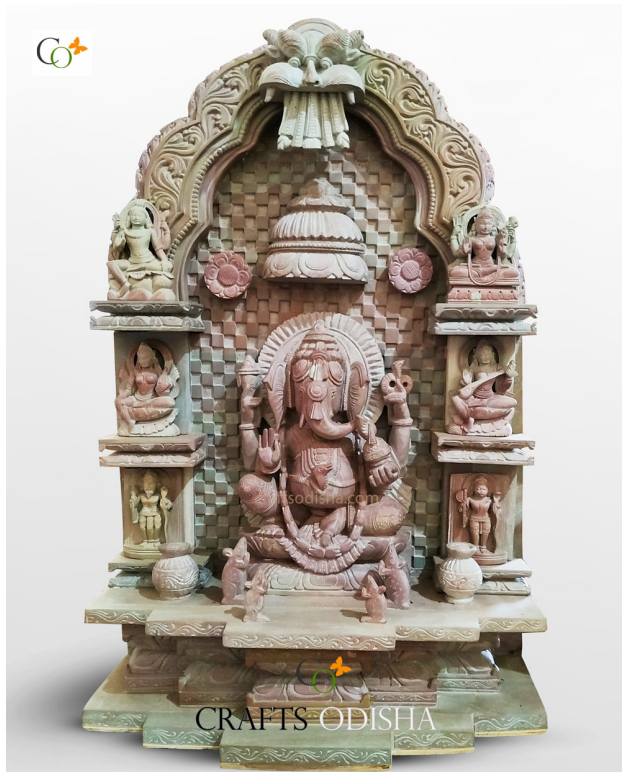
unknown. And his left-hand hangs down on the side of his body. His facial expression shows that he is at peace with life.

About Lord Buddha: Siddhartha Gautama, the son of king Shudhodana and Queen Maya of the Shakya clan. A presage was given at his naming ceremony, that either he would be a powerful king or a spiritual leader. Although his father tried every effort to keep him away from all means of suffering and sorrows of life, raised him with wealth and luxury. At the age of twenty-nine, he was already married, and had a son. Then one day he saw an old-aged man, a sick person, at a funeral and a religious ascetic. He realizes life is full of suffering, which arises from want or loss. So he decided to leave the lavish life, that he was leading so far, in search of a way to escape from this suffering. It took him six long years to find the answer to all his quests, which he discovered finally by meditating forty-nine days under a fig tree, near Bodh Gaya. He attained enlightenment and became "Buddha" and hence became the founder of Buddhism. Buddha means "a person who is awake" or "a knower". In his enlightenment, he discovered the mind is at total peace, and the soul is merged with the universe. This state of mindfulness arises only when a person's desire and sufferings go away completely.

How to make a statement with this beautiful statute at your place: Using this craft decoration for home, office, and lawn: Place this graceful statue near a water body, or fountain, close to a pillar. You can keep it in your garden or lawn area for a soothing atmosphere, with plants, flowers, and trees beneath it adding more rejuvenation to the propitiate. You can place it close to a water body or fountain, along a sidewalk, your restaurant, or park that you just designed, etc. As it represents the earth element, so placing this Buddha statue in the Northeast, southwest, and center will be more auspicious according to Vastu.

How to clean to get rid of dust: Cleaning the Buddha statute should be a pain. With a dry cloth or broom, it is enough to get rid of the dirt. Clean it once every month to keep your garden or home looking stunning.

More about the black stone and carving: The traditional art form of Stone Carving is one of the oldest continuing traditions in the world in Odisha, especially at Ratnagiri, Lalitgiri, and Udaygiri and in and around Puri. So bring a piece of history of 2nd century India to your home.



Soapstone Khanja Work Decorative Vastu Ganesha Statue for Home

[Read More](#)

SKU: 01550

Price: ₹75,000.00 inc. GST

Stock: onbackorder

Categories: [Ganesha Statues](#), [Garden Sculptures](#), [Hindu Statues](#), [Statues & Sculptures](#)

Tags: [Craft Decoration for Home](#), [Ganesha Decor](#), [Ganesha Decorative Statue for Home](#), [Ganesha God Statue](#), [Ganesha Home Statue Decor](#), [Ganesha Idol at Home](#), [Ganesha Idol Online](#), [Ganesha Stone Sculptures](#), [Hindu God and Goddesses](#), [Pink Stone Soap Stone Statue Manufacturer](#), [Soap Stone Statue For Home](#), [Soapstone Carving](#), [Stone Statue for Temple](#), [Stone Statue Manufacturer](#)

Product Description

A delightfully luxury finished and a nod to its noble simplicity Khanja work decorative Vastu Ganesha statue for home, overflowing with personality. Material: Soapstone / Pinkstone **Dimension(HWL):** 18 x 12 x 8 inch **Position:** Standing **Height:** 1.5 ft **explanation of the home garden statue:**

- It's a statue of Lord Ganesha the "Vighnaharta."
- In this statue, he is seen in Lalitasana over a lotus base on Mandapa under Torana, accompanied by his mount mouse beneath his feet, looking at his master with folded hands and docile eyes.
- In this form, he is seen with four arms where he is holding a goad, A broken tusk, sweetmeats, and a noose.

Ganesha: The mangal murti

- "Gana" stands for common people, and "Isha" means leader so "Ganesha" means the leader of common people.
- Lord Ganesha was worshipped before the beginning of any new venture, for this, he is popularly known as the god of beginning.
- He rides a mouse as his Vahana which is an Indian Bendi coot rat.
- He has an elephant head on a human body. The head represents the intellect.
- His birthday falls on the month of Bhadrava Shukla paksha Chaturthi known as Ganesh / Vinayak Chaturthi.

Beautiful ideas for your outdoor embellishment:

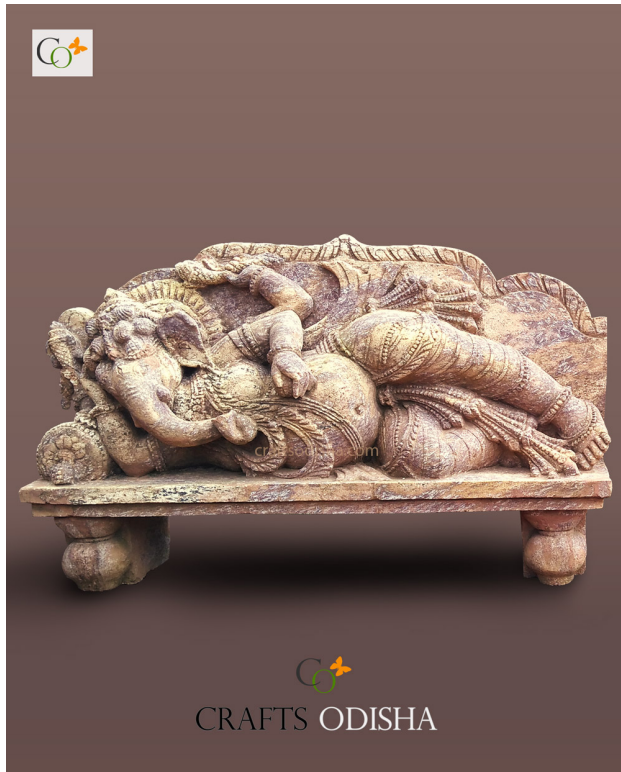
- Decorate it in your office, temple, or home prayer room.
- Display the sculpture in the nooks of your living room over an iron pedestal where every guest would see and appreciate your choice.
- This piece will grab the eye anywhere you placed it. So the entryway of the home/hotel/restaurant or office is an inviting idea to display the idol.
- Make it a talking point by exhibiting on the patio so that every time you went out of your home can get the blessing from the Vighnaharta.
- The lobby of the restaurant / hotel / resort is an inviting place where foot traffic is higher than normal.

The boons and benefits of Vaastu Ganesha stone sculptures:

- You will earn wisdom and intelligence from the epitome of knowledge "Lord Ganesha".
- His blessing is enough to lead a wealthy and prosperous life.
- He is known as **Mangal Murti**, the God of Good fortune and wealth so the worshipper gets an abundance of wealth & power.

How to clean your home garden statue:

- Soapstone is a non-porous martial that does not need regular cleaning so it's easy to maintain. For cleaning, you can go for a simple cleaning method once or twice a year.
 - Khanja work structure has many nooks and crevices in which dust is easily gathered, so clean them off using a paintbrush to reach those intricate areas.
 - Instead of a brush, you can also opt for a vacuum cleaner in sucking mode to suck out the dust from the surface.
-



Sandstone Peacefully Resting Ganesha on Bed Decorative Statue for Home

[Read More](#)

SKU: 01549

Price: ₹27,000.00 inc. GST

Stock: onbackorder

Categories: [Ganesha Statues](#), [Garden Sculptures](#), [Hindu Statues](#), [Statues & Sculptures](#)

Tags: [Big Ganesha Statue for Home and Garden](#), [Craft Decoration for Home](#), [Ganesha Decor](#), [Ganesha Decorative Statue for Home](#), [Ganesha Garden Statue](#), [Ganesha God Statue](#), [Ganesha Home Statue Decor](#), [Ganesha Idol at Home](#), [Ganesha Idol Online](#), [Ganesha Statue Decor for Garden](#), [Ganesha Stone Sculptures](#), [Ganesha Stone Statue for Outdoor](#), [Hindu God and Goddesses](#), [New Style Ganesh Murti](#), [Outdoor Stone Statue](#), [Sand Stone Ganesha Statue](#), [Sandstone Ganapati Statue](#), [Stone Statue for Temple](#), [Stone Statue Manufacturer](#)

Product Description

The patron of fortune and generosity idol resting on a bed bending one leg upon another. A resting-state where he is laying on a platform with a pillow under his head. This symbolizes the sovereignty and sanctity of the posture of lord Ganesha.

Material: Sandstone / Red stone **Dimension(HWL):** 15 x 24 x 10 inch **Height:** 15 inch (approx.) **Width:** 2 ft (approx.) **Statue position:** Resting

The lord's birth itself an interesting story to be folded, from a guardian of the door to the most important deity to get worshiped before commencing any holy ritual, to overcome an obstacle to bestow wealth, knowledge, and prosperousness. The God of onset. Holding a laddoo in his hand he pursues the sweetness of life and self-enjoyment. His jumbo belly represents chymify all good and bad things of the world. The rosary in his hand's tributes wisdom and knowledge, whereas the hatchet is known as pasam illusion of evil thoughts, and provides awareness. Shri Ganapati is one, who throws away negative energies and welcomes joy, well-being, enchantment in your life. From home to business or official his worshiped and admired by all.

people of age. People who search for harmony and success should consider bringing this amazing statue and spread positivity in the surrounding. **Placement:** Few things need to be kept in mind while placing the idol as the direction should be east, northeast, north. Again this Ganesha stone sculpture's calm pose is perfect both for indoor and outdoor kickshaw. This sedimentary rock looks perfectly adorn the lawn, swimming pool, garden, near the fountain, outdoor banquet. **Sandstone:** This tan color marvelously carved Ganesha stone sculptures by artisans gives a natural vibe to the idol. As it is carved for outdoor purposes too so the stone has durability in many folds. In Odisha, sandstone variety is used by many craftsmen and stone statue manufacturers for carving stone sculptures. **HOW to care:** Gently wipe with a soft towel or hand broom to avert dirt build-up. Do not bleach or acids the stone. *Elevate your decor with this royal piece of carving, and captivate the viewer with a pleasant look. Showcase your elegant taste with this stunning composed piece of divine sculpture in your home or outdoor area.*



Sanding Vastu 4.5 ft Ganesha Statue with Toran Frame for Home and Garden

[Read More](#)

SKU: 01548

Price: ₹155,000.00 inc. GST

Stock: onbackorder

Categories: [Ganesha Statues](#), [Garden Sculptures](#), [Hindu Statues](#), [Statues & Sculptures](#)

Tags: [Big Ganesha Statue for Home and Garden](#), [Craft Decoration for Home](#), [Ganesha Decor](#), [Ganesha Decorative Statue for Home](#), [Ganesha Garden Statue](#), [Ganesha God Statue](#), [Ganesha Home Statue Decor](#), [Ganesha Idol at Home](#), [Ganesha Idol Online](#), [Ganesha Statue Decor for Garden](#), [Ganesha Stone Sculptures](#), [Ganesha Stone Statue for Outdoor](#), [Hindu God and Goddessess](#), [New Style Ganesh Murti](#), [Outdoor Stone Statue](#), [Sand Stone Ganesha Statue](#), [Sandstone Ganpati Statue](#), [Stone Statue for Temple](#), [Stone Statue Manufacturer](#)

Product Description

This Redstone Ganesh murti in Standing under a toran frame on a platform. "**Ek daanta chaturbhuja**" this mudra is widely known for its broken tusk. In this form, his belly is quite ample. He is holding an ax, modak, beads, and the broken tusk. The toran has beautifully handcrafted with the heads of an elephant, peacock, a male, and female lion along with his vahana the bandicoot rat, the largest rat of Asia.

Material: sandstone/red stone **Dimension(HWL):** 52 x 26 x 20 inch **Height:** 4.5 ft (approx.)

Statue position: Standing

Every posture or mudra has some unique classification of his characteristic and symbolizes his godhood. Like other deities, Ganpati Ji also holds many objects which has some important symbol to the common people, like in this of his mudra in one hand he is holding broken tusk, in the instruction of sage Vyasa Kabi transcribe Mahabharata while writing those poems his feather pen broke, to transcription could proceed without interruption, he broke up his tusk. The broken tusk symbolizes equality and distinctive character. In another hand holding "beads" Japa mudra, an axe symbolizes cutting the bond of disregard. And finally, a hand full of modak looks like a coconut shape sweet symbolizes meditation, a simple form of getting *anand* so modak represents *anand* of spiritual life. Serpent around the waist, which depicts the cosmic energy in all forms. To overcome distressing energies, or encountering obstacles in one's life, career, business, personal and professional life this Ganesha stone sculpture is beneficial to sweep away all hardship. Uprooting all evil eye and conserving peace and prosperity of the devotee. This exquisitely designed and complex crafted Ganesha god statue is the artistic touch of brilliance artisans makes perfect furnishing the decoration in a spiritual way.

Placement suggestion: Whenever we plan to place a deity north Kona or esanya Kona is best for Hindu gods and goddesses, and this idol is specifically designed to be placed both for indoor and outdoor designing. You can place it on the lawn, garden, park, restaurants, the entrance of any premises.

Care: Sandstone is a stone that doesn't need much care or maintenance. simply wipe with a broom or a cloth is enough for maintenance. *Make a big difference in your decoration, and amaze the viewer with the impressive carved statue more durable and lasting.*



Beautiful Sitting Ganesha Made of Sandstone Home Statue Decor

[Read More](#)

SKU: 01547

Price: ₹120,000.00 inc. GST

Stock: onbackorder

Categories: [Ganesha Statues](#), [Garden Sculptures](#), [Hindu Statues](#), [Statues & Sculptures](#)

Tags: [Big Ganesha Statue for Home and Garden](#), [Craft Decoration for Home](#), [Ganesha Decor](#), [Ganesha Decorative Statue for Home](#), [Ganesha Garden Statue](#), [Ganesha God Statue](#), [Ganesha Home Statue Decor](#), [Ganesha Idol at Home](#), [Ganesha Idol Online](#), [Ganesha Statue Decor for Garden](#), [Ganesha Stone Sculptures](#), [Ganesha Stone Statue for Outdoor](#), [Hindu God and Goddesses](#), [Outdoor Stone Statue](#), [Sand Stone Ganesha Statue](#), [Sandstone Ganpati Statue](#), [Stone Statue for Temple](#), [Stone Statue Manufacturer](#)

Product Description

The sitting Sandstone Ganpati statue is a masterpiece of art magnificently carved and design enough to transmit his divine power to one's soul. He is supreme at bringing wealth and power into your life and eradicating hardship in both your personal and professional life.

Material: Sandstone / Khondalite stone **Height:** 4 ft **Dimension (HWL) :** 48 x 36 x 18 inch

Statue positioning: Sitting

When there is a competition between lord Kartikeya and Ganpati to be bestowed with the fruit of knowledge by his parents upon a condition where both of them have to circle around the earth three times, while lord Kartikeya circling around earth Ganpati circled around Lord Shiva and Goddess Parvati is known to be his idea of the world and won the race. And blessed to be the lord of knowledge and wisdom thereafter. In his six arms each of holding on to some objects, are lessons to common men. In one hand holding an elephant goad or ankus and a noose known as pasha, both collide and push away obstacles. holding beads of Japa mala, focus his calm attitude, the broken tusk is a symbol of sacrifice. Axe derivate all desires sufferings and pain and a pot full of sweets illustrate the reward of judicious life. And the serpent around

his waist symbol of the whole cosmic energy controlled by him. Lord Ganpati erases trouble and distress and brings happiness to one's life. Everyone wants success and a prosperous life with good fortune and knowledge. Lord Ganpati is known for wisdom so one will be blessed with enlightenment in life by worshipping him. Bringing Ganpati Ji into your space, life becomes harmonious peaceful, both personally and professionally. **Placement suggestion:** It is good to place the Ganesha stone sculptures on the main entrance gate of the house or office inside and outside for a good omen. The idol should be seated in the North East, North, or East direction. There are several areas where this idol can be furbished like, in school, park, garden, restaurant, etc. **Care:** Sandstone statues are great material as they require very little maintenance. Simply brush up or wipe it with a dry cloth or towel. You can spray water and bathe to too clean up.

The durable quality and rock finish make the well-carved statue turn heads both with devotion and for its tempting look.

Sandstone Standing Ganesha With Toran Frame Statue Decor for Garden

[Read More](#)

SKU: 01546

Price: ₹185,000.00 inc. GST

Stock: onbackorder

Categories: [Ganesha Statues](#), [Garden Sculptures](#), [Hindu Statues](#), [Statues & Sculptures](#)

Tags: [Big Ganesha Statue for Home and Garden](#), [Craft Decoration for Home](#), [Ganesha Decor](#), [Ganesha Decorative Statue for Home](#), [Ganesha Garden Statue](#), [Ganesha God Statue](#), [Ganesha Home Statue Decor](#), [Ganesha Idol at Home](#), [Ganesha Idol Online](#), [Ganesha Statue Decor for Garden](#), [Ganesha Stone Sculptures](#), [Ganesha Stone Statue for Outdoor](#), [Hindu God and Goddessess](#), [New Style Ganesh Murti](#), [Outdoor Stone Statue](#), [Sand Stone Ganesha Statue](#), [Sandstone Ganpati Statue](#), [Stone Statue for Temple](#), [Stone Statue Manufacturer](#)



Product Description

Sandstone Standing Ganesha With Toran Frame 5 ft Statue Décor for Garden is a worthy addition to your outdoor décor. The beautiful frame architecture reflects the brilliance of craftsmanship at its best. Stone carving age-old craft of Odisha kept the sculptural tradition alive through their unique stone carving. **Material:** Sandstone / Redstone Statue **Dimension (HWL):** 60 x 30 x 24 inch **Height:** 5 ft (approx.) **Position:** Standing The Outdoor Stone Statue is in a standing form symbolizes stringency and optimism, with varied attributes in his arms. A broken tusk, sweetmeats, prayer beads, and an axe. Axe is the symbol of the curtailment of pain and suffering of the devotee. The broken tusk illustrates how the lord is dedicated to his duty and can sacrifice himself for the service of others, the prayer bead is a symbol of constant learning, whereas the bowl of sweet is a reward for self-enlightenment of pursuing the righteous path. Ganesha God, always seen with a mouse, this mammal carry all human attributes like desires and pride, we all carry. The mousses beneath the god teach us we need to control this otherwise it will end up destroying us. All human has a mouth above their hands, while lord Ganesha has a trunk above his mouth. Our speech seems to take supersede our action, but lord Ganesha's action outweigh talk, the lesson for all "talk less- work more". Considered to be the remover of all obstacles and negativity, the idol is often kept by his devotees to protect themselves from evil energies. We bow for his blessing in all aspects of life. Again considered as a décor element the earthy look makes the Ganesha garden sculpture more pleasant. One of the best Ganesha stone sculptures for garden decoration, fountain decoration, swimming pool decoration, landscaping design, interior designing, outdoor or home decoration, this Statue can be used in temple or puja. **Placing:** To welcome divine energies into your space then northeast is the best direction. East or west is also a preferable choice for the placement of the sandstone Ganesha statue. **Care:** As it is an outdoor statue so it can stand any weather, you can bathe, or clean it with fiber cloth to keep the stone sculpture dirt-free. ***"A sculpture that goes any type of outdoor décor, spruce up your space."***



Sand Stone Big Dancing Ganesha on Snake God Indian Statue

[Read More](#)

SKU: 01545

Price: ₹150,000.00 inc. GST

Stock: onbackorder

Categories: [Ganesha Statues](#), [Garden Sculptures](#), [Hindu Statues](#), [Statues & Sculptures](#)

Tags: [Big Ganesha Statue for Home and Garden](#), [Craft Decoration for Home](#), [Ganesha Decor](#), [Ganesha Decorative Statue for Home](#), [Ganesha Garden Statue](#), [Ganesha God Statue](#), [Ganesha Home Statue Decor](#), [Ganesha Idol at Home](#), [Ganesha Idol Online](#), [Ganesha Statue Decor for Garden](#), [Ganesha Stone Sculptures](#), [Ganesha Stone Statue for Outdoor](#), [Hindu God and Goddesses](#), [Outdoor Stone Statue](#), [Sand Stone Ganesha Statue](#), [Sandstone Ganapati Statue](#), [Stone Statue for Temple](#), [Stone Statue Manufacturer](#)

Product Description

This alluring Sandstone Ganapati Statue, dancing on a serpent and stretching a snake over his head depicts Lord Ganesha in the rarest form. This impressive carved statue has six hands along with featuring an elephant head and a rounded belly while the mouse is also present near his feet, symbolizing his power to overcome obstacles and wrapped a serpent on his waist to keep the sweets from spill out. **Material:** Sandstone **Dimension(HWL):** 60 x 30 x 20 inch **Height:** 5 ft **Statue position:** Dancing Often Ganesha is shown sitting or standing, here he is dancing, which shows his joyous side. The dancing form is associated with Dhan Lakshmi. In his four hands he is holding an elephant goad, symbol of how one can control the situation of illiteracy and virtual reality, prayer beads symbolize concentration on life and knowledge should continuously hunt for, the axe represents cut off all obstruction of the devotee, and the laddoo attributes salvation. The belly of Lord Ganesha represents the whole cosmos, which he holding back with a snake around the waist. The Asian bandicoot rat his vahana also symbolizes uncontrolled desires and ego that need to be controlled. The way lord Ganesha controls the rat, we must also learn to control our desires and ego. The “Ga” in Ganesha means “knowledge”,

“na” means “salvation” and “isha” means “lord”. Lord Ganesha had two wives, named Riddhi who represents prosperity, and Siddhi who represents enlightenment. Has two sons namely Subha and Labha.

Dancing Ganesha is a happy and kind-hearted aspect of the Lord Ganpati out of his 32 forms. This form of Lord Ganesha is believed to bestow the devotees with an aptitude for learning fine arts, proficiency, success, and fame in their field whoever desires for self-growth, then dancing Ganesha is best to pick. Ganesha focuses on your inner strength and develops patience which will definitely help you to become a better human being. He removes negativity and purifies the soul you will become more peaceful and stress-free in your life. **Placing:** Placing Hindu gods and goddesses in the right spot at home or outdoor is important. To gets the fruitfulness of the deity. North and northeast directions are perfect to place the idol. Try to make Ganpati murti is facing the main entrance/exit of the home or office. (It is considered to be good for those people who are associated with creative work). Although Ganesha in any posture is auspicious for people seeking his blessing. Apart from this, you can place the finely crafted statue in garden decoration, fountain decoration, swimming pool decoration, landscaping design, interior designing, outdoor or home decoration, This Statue can be used in temples also. **Care:** You can clean the statue with water. Wipe or dust with a cloth or broom to get rid of compiles of dirt. *Amaze your guest with this unique sculpture and obtain applaud for your remarkable piece of choice.*



Sandstone Buddha Statue for Garden

[Read More](#)

SKU: 01542

Price: ₹30,000.00

Stock: onbackorder

Categories: [Garden Statues](#), [Garden Sculptures](#), [Sculptures](#)

Tags: [Big Buddha Statue](#), [for Garden](#), [Buddha Statue](#), [Garden Statue](#), [Buddha Statue](#), [Decor Statues](#), [Buddha Statue](#), [Sculpture](#), [Buddha Statue](#)

[Decoration for Home](#), [Decorative Statues for Home](#), [ft Buddha Statue](#), [Hindu God and Goddess](#), [home décor](#), [Home Statue Decor](#), [Indian Statues](#), [Laughing Buddha Stone Statue for Home and Garden](#), [Lord Buddha Idols](#), [Sand Stone Buddha Statue](#), [Sandstone Buddha Statue](#)

Product Description

Sandstone Laughing Buddha Statue for Money – Home and Garden, is a symbol of copiousness, indulgence, and good fortune. The showpiece is able to foreground the beauty of your personal space.

Material: Sandstone/Redstone **Height:** 2 ft **Dimension(HWL):** 24 x 16 x 12 inch **Position:** Sitting

Called "Budai" in Chinese. The Chinese zen monk, considered to be a man of good and loving character. A sitting posture of Buddha is assessed to be the stability of thoughts and quietude. The Chinese monk is usually depicted as a roly-poly, bald-headed, laughing with a rotund stomach. He holds a lot of significance with his posture in our life. The idol has been seen in a meditation pose, has both the palms on his lap holding balls of wealth, half-closed eyes, and smiling. The monk with balls represents the practice of meditation. The ball is considered to be the ball of wealth. The smiling Buddhas holding balls in both hands illustrate affluence and clover. It is believed that by consuming all the negative energy he develops the potbelly. In India, he resembles Kubera, the deity of prosperity. The statue is said to bring fulfillment and calmness to the environment where it is placed. Not only brings a stick of luck but also strengthens and mends all the sectors of your life in a positive way. The stone or brown paint laughing buddha statue associate with the earth factor. Earth represents steadiness, subsistence, and grounding. Rubbing his belly is believed to bring more prosperity in life.

Placing: To bring harmony and happiness, place him in the east direction of your desired place. Placing him in the southeast was believed to increase in wealth. For gaining wisdom place him in the northeast. If you are willing to keep him at any entrance then make his face inside the main door. The garden is also a part of your home and connected to nature, so keeping him in the garden area will energize the spirit of nature as well as welcomes joy and laughter in your home and life. **Care:** The statue has fine polishing, dusting with a cloth or broom is sufficient to maintain the glossiness of the sculpture.



Pink Soft Stone Khanja Work Buddha Decorative Statue for Home

[Read More](#)

SKU: 01539

Price: ₹160,000.00 inc. GST

Stock: onbackorder

Categories: [Sitting Buddha Statues](#), [Buddha Statues](#), [Garden Sculptures](#), [Statues & Sculptures](#)

Tags: [Buddha Home Decor](#), [Buddha Home Decor Statues](#), [Buddha Home Statue](#), [Buddha Stone Sculpture](#), [Buddha Stone Statue Manufacturer](#), [Craft Decoration for Home](#), [Decorative Statues for Home](#), [ft Buddha Statue](#), [Hindu God and Goddess](#), [home décor](#), [Home Statue Decor](#), [Indian Statues](#), [Lord Buddha Idols](#), [Pink Stone Soap Stone Statue Manufacturer](#)

Product Description

Pink Soft Stone Khanja Work Buddha Decorative Statue for Home, is a brilliant piece of engraved stonework of art. Expressive detailing, rich stone finish, with a glossy earthy glaze, made the statue worth looking at.

Material: Pink stone/ Soapstone **Dimension(HWL):** 24 x 16 x 10 inch **Position:** Sitting Buddha the "awakened one". A prince who left his palace, leaving all material comfort in search of enlightenment. Buddha statue represents the life and teaching of Gautama Buddha. His posture, expression, hand gestures are notable. Serve those teaching in everyday life. The posture is called "Asana" and the hand gesture is called "Mudra". Here this posture of buddha is called "**Amithabha Buddha**" which means "**Boundless Light**". In this pose he is sitting on a lotus throne, both hands face up in the lap or you can say dhyana mudra (an ancient gesture of meditation), his eyes are fully closed as represent focused concentration, his leg crossed and sole of the feet turned upward. Lotus signifies overcoming struggles in our life. There was a time when he was in meditation so deep that he couldn't notice the rains and floods comes to sweep him away, the seven-headed snake king saw this and wrapped his coils around him, and lifted him out of the water. Then spread his hood over the top of the buddha to protect him, as we saw in this statue. Meditating Buddha typifies peace and placid in life. Seeing his divine image teaches us to remember that difficulties in the road to enlightenment are part of our

journey, it helps to rebuild fortitude, purge our negative thoughts, and ingrain self-respect. Not only a great piece of decor it also amplifies the calmness of the interior. Create positive vibes in the space. Buddha cultivates your knowledge, stability. If the Buddha is of Earth tone, represent self-care and well-being. Keeping mediating stone Buddha statue at home extends peacefulness, rest of the senses as well as for everyone seeking serenity. **Placing:** The bigger the Buddha, the more fortune it can fetch. To reap the benefits of the statue, place it in a quiet corner of your home where you can sit and meditate, make sure the statue is placed at your eye level. You can also light up the incense sticks or Diya to spread the vibe all around. **Care:** Wipe the statue with a cloth, you can also use a small brush to reach the engraved part.



Sitting Teaching Buddha Home Decor Statue Made of Sandstone

[Read More](#)

SKU: 01538

Price: ₹60,000.00 inc. GST

Stock: onbackorder

Categories: [Garden Buddha Statue](#), [Buddha Statues](#), [Garden Sculptures](#), [Sitting Buddha Statues](#), [Statues & Sculptures](#)

Tags: [Big Buddha Statue for Outdoor](#), [Buddha Decor for Garden](#), [Buddha Garden Landscaping](#), [Buddha Garden Statue](#), [Buddha Home Decor](#), [Buddha Home Decor Statues](#), [Buddha Home Statue](#), [Buddha Stone Sculpture](#), [Buddha Stone Statue Manufacturer](#), [Craft Decoration for Home](#), [Decorative Statues for Home](#), [ft Buddha Statue](#), [Hindu God and Goddess](#), [home décor](#), [Home Statue Decor](#), [Indian Statues](#), [Lord Buddha Idols](#), [Sand Stone Buddha Statue](#), [Sandstone Buddha Statue](#)

Product Description

Sitting Teaching Buddha Home Decor Statue Made of Sandstone is more than just ornamentation. Simple and elegant fit with indoor as well as outdoor furnish.

Material: Sandstone/Redstone **Height:** 3 ft (approx.) **Dimension(HWL):** 36 x 24 x 12 inch

Position: Sitting

His teaching formed the foundation for Buddhist philosophy. His philosophy is the middle way between assertiveness and incredulity. His basic teaching is the four noble truths. Noble truths "Aryastaya", Arya means a noble person, Satya means truth and reality. A noble person in an ethical and spiritual sense. The four noble truths are:

- The reality of suffering (within the samsara)
- Origin of suffering (mental states that generate suffering)
- End of suffering. (with peace, higher knowledge)
- The eighth fold path

Teaching Buddha statue is seen sitting comfortably on a lotus, with fully closed eyes. both legs folded, with the sole of feet face upward. Right hand raised to shoulder level with the tip of the index and thumb forming a circle (wheel of dharma), palm facing outward. while the left hand forming the same circle with the figures and resting in the lap facing upward. His raised right hand represents protection, while the second represents conquering fear. The teaching Statue depicts the life of the Buddha after achieving enlightenment when he first preaches his teaching. Known as "Dharma chakra Buddha". The most important phase of his life, where he shared all the knowledge during his enlightenment period with his disciples. Intellect, understanding, and fulfilling destiny represent Buddha's teaching statue. The statue can stimulate the energy of any corner where it is placed. It balances the inner peace. **Placing:** As it is a symbol of teaching you can place it in the northeast corner of your home, office, or garden. Ideal for those seeking knowledge, and spiritual growth. Placing it in the north sector boost career. Basically, if the Buddha statue is made from clay/stone, can be placed in the northeast, southwest, or in center to energize the earth element. **Care:** Very easy to dust, gently wipe the Buddha statue with a cloth or broom enough to prevent any dirt compile.



6 ft Decorative Sandstone Sitting Buddha Statue under Granite Tree

[Read More](#)

SKU: 01537

Price: ₹475,000.00 inc. GST

Stock: onbackorder

Categories: [Garden Buddha Statue](#), [Buddha Statues](#), [Garden Sculptures](#), [Sitting Buddha Statues](#), [Statues & Sculptures](#)

Tags: [Big Buddha Statue for Outdoor](#), [Black Granite Stone Statue Manufacturer](#), [Buddha Decor for Garden](#), [Buddha Garden Landscaping](#), [Buddha Garden Statue](#), [Buddha Home Decor](#), [Buddha Home Decor Statues](#), [Buddha Home Statue](#), [Buddha Stone Sculpture](#), [Buddha Stone Statue Manufacturer](#), [Craft Decoration for Home](#), [Decorative Statues for Home](#), [ft Buddha Statue](#), [Hindu God and Goddess](#), [home décor](#), [Home Statue Decor](#), [Indian Statues](#), [Lord Buddha Idols](#), [Museum Statue](#), [Sand Stone Buddha Statue](#), [Sandstone Buddha Statue](#), [Statue for Museum](#)

Product Description

6 ft Decorative Sandstone Sitting Buddha Statue under Granite Tree, is a masterpiece, able to leave a lasting impression on your guest. The earthy color with rugged texture gives the statue a deeply aged look. **Material:** Sandstone/Redstone (Buddha) and Blackstone/Granite (Dali work/ Tree) **Dimension (HWL):** 72 x 48 x 30 inch **Height:** 6 ft **Position:** Sitting Siddhartha Gautama, son of an Indian king, left all the luxury and royal life in search of enlightenment. The prince with his will, wisdom, and determination became the Buddha, attaining the highest possible mode of perfection. All of his teachings can be recapitulated in one word " Dhamma" which means truth. The principle of righteousness. Buddha has pleaded to become noble, not to please any other, but to be true to one's self. The only way to free yourself from suffering is the Dhamma than you can escape misery and attain nirvana. He discovers four noble truths: **The truth of suffering, the cause of suffering, the end of suffering, and the path that leads to the end of suffering.** Suffering can be

mental or physical. Here the Buddha sitting under a tree, Both legs folded, sole of feet in upward faced. Both hands face up in the lap making a triangle with both the thumb which represents stability. Eyes completely closed represents deep meditation. The dot in the center of his forehead symbolizes wisdom. This form illustrates peace and calm. The pose widely recognizes as "Amitabha Buddha " which is means "boundless night. The Buddha statue is not only a décor piece for home or gardens, it also energizes inner peace, abundance, and de-stress. Placing him in work station amplifies success and wealth. Accumulates a positive vibe.

Placing: According to Feng-Sui meditating statue of Buddha should face east direction because during his search for enlightenment Lord Buddha used to meditate when the sun rising. Keep the area clean always around the statue. remember to put him at eye level. This beautiful statue can be used in garden decoration, fountain decoration, swimming pool decoration, landscaping design, interior designing, outdoor or home decoration, this Statue can be used in temples or puja. You can also use it as an outdoor statue. **Care:** The durable stone statue can be cleaned with water. Gently wipe with a cloth or broom will prevent the dirt from accumulating.



Odisha khondalite Stone Big Polished Sitting Buddha Statue for Outdoor

[Read More](#)

SKU: 01536

Price: ₹450,000.00 inc. GST

Stock: onbackorder

Categories: [Garden Buddha Statue](#), [Buddha Statues](#), [Garden Sculptures](#), [Sitting Buddha Statues](#), [Statues & Sculptures](#)

Tags: [Big Buddha Statue for Outdoor](#), [Buddha Decor for Garden](#), [Buddha Garden Landscaping](#), [Buddha Garden Statue](#), [Buddha Home Decor](#), [Buddha Home Decor Statues](#), [Buddha Home Statue](#), [Buddha Stone Sculpture](#), [Buddha Stone Statue Manufacturer](#), [Craft Decoration for Home](#), [Decorative Statues for Home](#), [ft Buddha Statue](#), [Hindu God and Goddess](#), [home décor](#), [Home Statue Decor](#), [Indian Statues](#), [Lord Buddha Idols](#), [Sand Stone Buddha Statue](#), [Sandstone Buddha Statue](#)

Product Description

Odisha khondalite Stone Big Polished Sitting Buddha Statue for Outdoor is a beautiful showpiece of an earthy color statue. A touch of spirituality to your home decor.

Material: Sandstone/Khondalite stone **Height:** 8 ft **Dimension(HWL):** 96 x 63 x 30 inch

Position: Sitting

Buddha " **Awakened one**" The founder of Buddhism. He refers to himself as "**Tathagata**" which means " the one who has thus come/gone". The monk who left the royal life in the search of enlightenment, attain it and preached it with his followers, the state beyond birth and death. Every statue of his delivers some meaning. Every posture has a specific hand gesture called "Mudra". Here the statue depicts as " **Calling the earth to witness**" or **Earth touching Buddha**". Both of his legs crossed, soles of both feet turned upward, eyes partially open, the left hand is resting downward in the lap, while the right hand pointing to the ground with the palm facing inward towards himself. The story of calling the earth to witness fold up when on the verge of enlightenment, " Mara " the demon of pretense tried to deter him, from the culmination. But Buddha meditate all night long to get over the dread and decoy sent by Mara and called the earth goddess to witness. Witnessing Buddha achieved enlightenment and share with the rest of the world, the earth goddess wrung her hair and released floodwaters that swept away the demon and all the decoys he has released. The fundamental teaching is the four noble truths. First is "DUKHA", the second is "DUKHA HAS A CAUSE", the third is "WE CAN KNOW THE CAUSE OF DUKHA". and last is " WISDOM OF ENLIGHTENMENT". His teaching is universal apart from any religion, culture, and country you were born in. Buddhism is also known as the science of the mind so, a person can achieve an inner peace of mind by practicing. A healthy state of mind is linked to our inner peace so keeping a buddha statue will strengthen mental health and peace. The sitting Buddha outdoor statue enhances the positive and harmonious vibe in the surrounding. The earthy color Buddha statue perfectly blends with mother nature and amplifies the natural spirit of your outdoor decoration. **Placing:** If you are choosing the statue for your outdoor garden, place it facing your house, the same applies if you are placing it at any entrance/porch. You can add water features, bubbling fountains, lightning around the statue, etc. **Care:** You can bathe the statue, as well as you can, wipe it with a cloth or a broom.



Light Pink Sandstone Big Sitting Teaching Buddha Statue with Pedestal

[Read More](#)

SKU: 01535

Price: ₹800,000.00 inc. GST

Stock: onbackorder

Categories: [Buddha Statues](#), [Garden Buddha Statue](#), [Garden Sculptures](#), [Sitting Buddha Statues](#), [Statues & Sculptures](#)

Tags: [Bansi Paharpur Stone Buddha Statue](#), [Big Buddha Statue for Outdoor](#), [Buddha Decor for Garden](#), [Buddha Garden Landscaping](#), [Buddha Garden Statue](#), [Buddha Home Decor](#), [Buddha Home Decor Statues](#), [Buddha Home Statue](#), [Buddha Stone Sculpture](#), [Buddha Stone Statue Manufacturer](#), [Craft Decoration for Home](#), [Decorative Statues for Home](#), [ft Buddha Statue](#), [Hindu God and Goddess](#), [home décor](#), [Home Statue Decor](#), [Indian Statues](#), [Lord Buddha Idols](#), [Museum Statue](#), [Sand Stone Buddha Statue](#), [Sandstone Buddha Statue](#), [Statue for Museum](#)

Product Description

Material: Pink Sandstone **Dimension(HWL):** 96 x 64 x 30 inch

Height: 8 ft **Position:** Sitting **Description:** Light Pink Sandstone Big Sitting Teaching Buddha Statue with Pedestal, is a symbol of peace and tranquility. Buddha statue always has an important place in Vaastu sastra and Feng-Sui. Siddhartha Gautama, born to a royal family, relinquishes the lavish life and luxury, in search of enlightenment which he finally brings by meditating under a bodhi tree in Sarnath. which he later preach to others about how to achieve this spiritual state. Teaching Buddha is the display of the phase where he preaches his teachings. This pose is widely known as "**Dharma Chakra Buddha**". Dharma means "the way of righteousness", Chakra means "cosmos" if we coin together it interprets as "Universal moral order". The wheel of law has eight spokes representing the eightfold path of his teachings those are: 1. Right Understanding - Samma Ditthi 2. Right thought- Samma Sankappa 3. Right speech- Samma Vaca 4. Right action- Samma Kamanta 5. Right livelihood- Samma Ajiva 6.

Right effort -Samma Vayama 7. Right mindfulness -Samma Sati 8. Right concentration -Samma Samadhi Dharma Chakra Buddha statue denotes the motion of the wheel of the Dharma. He is sitting comfortably on a pedestal, in Vajrasana also known as the adamant pose, with both the legs crossed each other with the soles of the feet face upward. The right hands are held in front of the chest (as the teaching is straight from the Buddha's heart) and formed the dharma chakra mudra by forming a circle with the tip of both the index finger and the thumb. The other three remaining fingers remain extended and have their own symbolic meaning, the middle fingers represent "Hearers", the index represents "Realization" and the little finger represents "Mahayana". The left-hand palm up, resting in his lap again forming the circle with the index and thumb, the rest of the fingers symbolizes jewels of the Buddhist principle they are **The Buddha, The Dharma, The Sangha**. Eyes fully closed. The teaching Buddha statue is commonly admired by those who seek wisdom, knowledge, and spiritual growth in life as it represents the continuous flow of energy. It helps to polish up focus and develop a positive attitude. **Placing:** Dharma Chakra Buddha is favorable if placed in the Northeast zone of your desire place. It will be eye-catching to place the statue near the plant, water body, swimming pool, fountain, garden area, etc. The white color blends easily with the natural background, and interior style. **Care:** The Buddha statue is weatherproof, You can bathe the statue, and wipe it with a cloth to prevent dust and dirt.



Sandstone I
Buddha Sta
Garden or P

[Read More](#)

SKU: 01534

Price: ₹135,000.00

Stock: onbackorde

Categories: [Garden Sculptures](#), [Sculptures](#)

Tags: [Big Buddha Statue](#), [Garden Statue](#), [Buddha Sculpture](#), [Decor Statues](#), [Buddha Decoration for Home](#)

[Buddha Statue](#), [Hindu God and Goddess](#), [home décor](#), [Home Statue Decor](#), [Indian Statues](#), [Lord Buddha Idols](#), [Sand Stone Buddha Statue](#), [Sandstone Buddha Statue](#)

Product Description



Pink Sand Stone Big Buddha Outdoor Statue Sitting on Life Story Base

[Read More](#)

SKU: 01533

Price: ₹2,400,000.00 inc. GST

Stock: onbackorder

Categories: [Buddha Statues](#), [Garden Buddha Statue](#), [Garden Sculptures](#), [Sitting Buddha Statues](#), [Statues & Sculptures](#)

Tags: [Bansi Paharpur Stone Buddha Statue](#), [Big Buddha Statue for Outdoor](#), [Buddha Decor for Garden](#), [Buddha Garden Landscaping](#), [Buddha Garden Statue](#), [Buddha Home Decor](#), [Buddha Home Decor Statues](#), [Buddha Home Statue](#), [Buddha Stone Sculpture](#), [Buddha Stone Statue Manufacturer](#), [Craft Decoration for Home](#), [Decorative Statues for Home](#), [ft Buddha Statue](#), [Hindu God and Goddess](#), [home décor](#), [Home Statue Decor](#), [Indian Statues](#), [Lord Buddha Idols](#), [Museum Statue](#), [Sand Stone Buddha Statue](#), [Sandstone Buddha Statue](#), [Statue for Museum](#)

Product Description

Material: Pink Sandstone **Dimension(HWL):** 120 x 48 x 36 inch

Height: 10 ft **Position:** Sitting **Description:** Pink Sand Stone Big Buddha Outdoor Statue Sitting on Life Story Base, a fine off-white surface finish embellish the surrounding. Just from a single glance of the statue, your soul begins to feel relax and calm your mind. Siddhartha Gautama, when he was born a presage was given that either he would be a powerful king or a

spiritual leader. Although he was born as a prince and before becoming a king, fate has restored some other plan for him, after he saw an old aged, a sick, a funeral and a religious ascetic. he realizes life is full of suffering, that arises from want or loss. So he decided to leave the royal and lavish life in search of enlightenment. Which he attains after 49 days of continuously meditating under a banyan tree, in Bodh Gaya. This statue depicts his phase of teaching life, where he delivered his first preach. He shared all the experiences he gained from meditation, the four noble truths, and the eightfold path. one will free himself from the wheel of cosmos if he recognizes the truth and follows the path. The four noble truths are 1st.

Suffering, 2nd. The cause of suffering, 3rd. The end of suffering, and 4th. The path leads to the end of suffering. The eightfold paths are **Right Understanding, Right Thought, Right Speech, Right Action, Right Livelihood, Right Effort, Right Mindfulness, and Right Concentration.** Teaching Buddha is widely recognized as Dharma Chakra Buddha. His statue's posture depicts the chakras by making circles (chakra) from the tip of the index and thumb in both hands. The right hand is raised and folded near the chest while the other rested on the lap. Sitting on a pedestal, Both legs crossed with each other (called Vajrasana), the sole of the feet face up with eyes completely closed. The statue of teaching Buddha is beneficial for those who seeking knowledge and spiritual growth in life. It is believed to enhance the positive energy of the space where it place. **Placing:** The Northeast sector is called favorable for Teaching Buddha. It will create a magnificent as well as soothing environment if you keep the statue outdoor with plants all around, atop a fountain, swimming pool, Lawn, etc. **Care:** The durable Sandstone Buddha statue can stand any weather. You can use water to clean or a cloth/broom to wipe it



Sand Stone Outdoor Big Sculpture

[Read More](#)

SKU: 01532

Price: ₹425,000.00

Stock: onbackorder

Categories: [Garden Sculptures](#), [Garden Sculptures](#), [Sculptures](#)

Tags: [Big Buddha Statue](#), [for Garden](#), [Buddha](#)

[Garden Statue](#), [Buddha Home Decor](#), [Buddha Home Decor Statues](#), [Buddha Home Statue](#), [Buddha Stone Sculpture](#), [Buddha Stone Statue Manufacturer](#), [Craft Decoration for Home](#), [Decorative Statues for Home](#), [ft Buddha Statue](#), [Hindu God and Goddess](#), [home décor](#), [Home Statue Decor](#), [Indian Statues](#), [Lord Buddha Idols](#), [Sand Stone Buddha Statue](#), [Sandstone Buddha Statue](#)

Product Description

Sand Stone Decorative Framed Outdoor Big Sitting Buddha Sculpture, is an artistic piece symbolizing peace, harmony, and self-realization. An excellent choice for meditating area, while capturing a sense of inner peace.

Material: Sandstone/ Redstone **Height:** 7 ft (approx.) **Dimension(HWL):** 84 x 56 x 30 inch

Position: Sitting Despite being born in a royal family he left all the luxury behind and went in the search of enlightenment. According to the belief he is considered to be the 9th reincarnation of Lord Vishnu. The different posture of Lord Buddha has different morality in life. The "Meditating Buddha" in this posture of lord buddha is seated with folded legs, both soles of feet turn upward, both hands resting on the lap, the back of the right palm is resting on the left-hand palm, the two thumbs coin together forming a triangle symbolizing the unity of Buddha, Dharma, and Sangha. Partially closed eyes. The dot on the forehead signifies wisdom. The dhyana mudra of the statue depicts peace and calmness. The meditating statue is also known as "Amitabha Buddha" which means "boundless night". Where he understood how to free oneself from suffering (Dukha) and achieve salvation. Lord Buddha and his teaching is an inspiration, for every individual. It gives peace to our mind, heart, and soul. The Buddha statue is also a sign of hope and courage. The path of enlightenment can be achieved only through meditation, virtue, and wisdom. Keeping Meditating Buddha at home or office brings peace and tranquility. To lead a happy life inner peace is the most need which can be achieved through deep meditation. Buddha statue always believed to spread positive vibe in its surrounding where it place. **Placing:** As it is presenting meditation so, it would be supportive in your meditation area. Always place it facing towards home, or office if you are opting to place it in the garden or outdoor space. Keeping an earth color Buddha is favored for self-care and wellbeing. The earthy color statue is also so mesmerizing to place in garden, landscaping, and near fountain or pool believes to amplify the spiritual vibe. **Care:** Clean with water, or you can wipe it with a cloth also don't let the dirt settle in.



Pink Sandstone Statue Blessing Buddha Decor for Garden Landscaping

[Read More](#)

SKU: 01531

Price: ₹350,000.00 inc. GST

Stock: onbackorder

Categories: [Buddha Statues](#), [Garden Buddha Statue](#), [Garden Sculptures](#), [Sitting Buddha Statues](#), [Statues & Sculptures](#)

Tags: [Bansi Paharpur Stone Buddha Statue](#), [Big Buddha Statue for Outdoor](#), [Buddha Decor for Garden](#), [Buddha Garden Landscaping](#), [Buddha Garden Statue](#), [Buddha Home Decor](#), [Buddha Home Decor Statues](#), [Buddha Home Statue](#), [Buddha Stone Sculpture](#), [Buddha Stone Statue Manufacturer](#), [Craft Decoration for Home](#), [Decorative Statues for Home](#), [ft Buddha Statue](#), [Hindu God and Goddess](#), [home décor](#), [Home Statue Decor](#), [Indian Statues](#), [Lord Buddha Idols](#), [Sand Stone Buddha Statue](#), [Sandstone Buddha Statue](#)

Product Description

Material: Pink Sandstone **Dimension (HWL):** 60 x 40 x 20 inch

Height: 5 ft **Position:** Sitting **Description:** Pink Sandstone Statue Blessing Buddha Decor for Garden Landscaping, an artisanal elegance. Demonstrating the fearless, protected from negativity, and blessing mudra. Buddha foreshadower of Buddhism. The term Buddha means "The enlightened one". There are different mudras of Buddha where he conveys different meanings with his posture and gesture. This form of his structure is known as blessing buddha or protection buddha in other words he is known as "**Amogsiddh Buddha**", Amogh means "unerring" siddhi means "success". named for his foolproof attainment. Blessing/protection Buddha sits with his right hand raised in Abhaya mudra (gesture of fearlessness) facing outward, it symbolizes protection or shield (divine protection), while the left-hand palm, joining of the index finger and thumb to form a ring, resting in the lap facing upward represents the constant flow of energy/information. Both legs crossed, and feet sole turned upward. His eye completely closed. The dot on his forehead, where the third eye is demonstrates the vanishing point. His

long and droopy ears depict his nobility before attaining enlightenment (stretch by jewels which he wore), which signifies the hope of transformation. Protection Buddha denotes self-reliance and provides protection from alarm, self-deception, and spleen. A perfect choice for those who seek energy from an enlightened being. The protection Buddha is also useful for healing Vaastu dosa, any area that requires it. The Garden is an ideal space for relaxation so keeping the Buddha statue at any corner of the garden works wonders in pacifying feel in the surrounding. **Placing:** The decor accessories bring tranquility to your space. You can also place him at the entrance facing inward of your home, to ward off from negative elements. As the statue is in a white tone so the statue blend with the natural color of the outdoor garden and gives a feast to your eye. You can also place him near the flowering tree, fountain, pool area, etc. **Care:** You can bathe the statue, a cloth or broom is also useful for dusting.



Granite Muguni Stone Meditation Statue of Lord Buddha for Garden 6 ft

[Read More](#)

SKU: 01530

Price: ₹450,000.00 inc. GST

Stock: onbackorder

Categories: [Garden Buddha Statue](#), [Buddha Statues](#), [Garden Sculptures](#), [Sitting Buddha Statues](#), [Statues & Sculptures](#)

Tags: [Big Buddha Statue for Outdoor](#), [Black Granite Stone Statue Manufacturer](#), [Black Stone Buddha Statue](#), [Buddha Decor for Garden](#), [Buddha Garden Landscaping](#), [Buddha Garden Statue](#), [Buddha Home Decor](#), [Buddha Home Decor Statues](#), [Buddha Home Statue](#), [Buddha Stone Sculpture](#), [Buddha Stone Statue Manufacturer](#), [Craft Decoration for Home](#), [Decorative Statues for Home](#), [ft Buddha Statue](#), [Granite Stone Buddha Statue](#), [Hindu God and Goddess](#), [home décor](#), [Home Statue Decor](#), [Indian Statues](#), [Lord Buddha Idols](#), [Muguni Stone Statue](#)

Product Description

Granite Muguni Stone Meditation Statue of Lord Buddha for Garden figurine is a graceful way to spread harmony in the surrounding. A dark finish artisanal elegance outdoor appealing display.

Material: Blackstone/ Granite **Dimension (HWL):** 72 x 48 x 24 inch

Height: 6 ft **Position:** Sitting Buddha statue is not only a decorative piece, its have many depictions, each expression of hand, eye, legs, posture illustrate the life of Lord Buddha. Born as Siddhartha Gautama in a royal realm. Conquer the name of Buddha himself after practiced meditation beneath a Bodhi tree, until pull-off enlightenment. Here he is seen in meditating posture, the phase of attaining enlightenment. Also known as " Amitabha Buddha" the boundless light. He is seen sitting in "Vajrasana", with Both hands resting on his lap, the right-hand palm is resting on the palm of the left hand forming a triangle with the tip of the thumb of both hands. The triangle is a symbol of stability. As he is in meditation so his eyes are closed fully in deep concentration. The dot on his forehead is the symbol of wisdom. This effigy delineates peace, harmony, and serene. For people seeking inner peace and spiritual growth, then Amitabha Buddha is best. Also helps in the office as it amplifies the focus and attracts wealth. **Placing:** You can place him in a secluded corner, of your home where you can sit and relax. The meditating statue should keep facing east because he meditated during the sun rising during his enlightenment period. If you want to add relaxation to your garden, then meditating Buddha will be an ideal choice, place him near Flower plants, water bodies. You can place the Idol atop of fountain, pool, lawn. It will add positive energy to your yoga room, will boost your mood, and maintain the balance of unwinding. You may burn few sticks of license or put some flowers in front of the statue as a gesture of respect and reverence. **Care:** Granite stone is a durable material that can stand any severe Strome, and is able to stand the test of time. For cleaning purposes, you can bathe the statue. The wipe can be done using a cloth or broom.
