



## Yagya Narayan Pattachitra Tasar Painting

[Read More](#)

**SKU:** 00838

**Price:** ₹29,120.00 inc. GST

**Stock:** instock

**Categories:** [Patachitra Paintings](#)

**Tags:** [canvas painting](#), [home décor](#), [interior designing](#), [lord vishnu painting](#), [odisha paintings](#), [pattachitra art](#), [pattachitra paintings](#), [tasar paintings](#), [wall decor](#), [yagya narayana paintings](#)

### Product Description

---



## Kandarpa Hasti Krishna Leela Canvas Painting

[Read More](#)

**SKU:** 00737

**Price:** ₹6,160.00 inc. GST

**Stock:** instock

**Categories:** [Patachitra Paintings](#), [Wall Decor](#)

**Tags:** [home décor](#), [odisha paintings](#), [pattachitra art](#), [pattachitra paintings](#), [screen print paintings](#), [tasar painting](#), [wall decor](#)

### Product Description

---



## Beautiful Village Painting Patachitra

[Read More](#)

**SKU:** 01784

**Price:** Call for price

**Stock:** instock

**Categories:** [Patachitra Paintings](#), [Wall Decor](#)

### Product Description

**Finding the right living room painting can be a tricky prospect, with sizing just as important as style, not to be worried, CRAFTS ODISHA is here to serve you the beautiful Village Painting Patachitra, a timeless piece sure to give any living room just the right hint of sophisticated formality. Material:** Tasar fabric **Dimension (HWL):** **Weight:** **Frame:** With frame **Illustration:**

- The artifact described here is a unique Decorative Beautiful Village Painting Patachitra.
- The art piece is well-painted with multiple colors, making it strikingly beautiful.
- The depth of the artisan-made craft decoration is stunning, and the varied masterpieces are ravishing and amazing to make you fall for it.
- The skillful articulation over the Patachitra has depicted the life of tribal people and their customs.
- The Patachitra paintings are formed on a special canvas where Tasar clothes are layered with a tamarind paste and then coated with clay powder.

### Decorative tips for the Tribal Life Village Painting:

- A series of framed Village Painting is such a natural fit for a gallery wall.
- A blank wall makes the artwork pop even more with the Tribal Life painting.
- Cover the blank space surrounding the door with a frame Patachitra Painting.

- Go crazy with Village Painting wall deco on your living room wall.
- The room gets well, and great and has an earthy touch with the Tribal Life Patachitra Painting.
- The Village Painting brings a sense of authority and seems to put things into perspective.
- With a little planning, this can be your favorite part of the house where you display your Patachitra Painting.
- The wall of the staircase serves multiple purposes, highlights your favorite piece of art, and gives you a chance to get creative.
- A great way to add your personal touch and cover a wide space is by getting your favorite piece of art hung on the wall.

### How to buff the Village Patachitra Painting:

- With our effortless caring information, your art decoration will have a long life and look as beautiful as the first day.
- Buffing the Patachitra Painting with a cloth(dry), from time to time is sufficient to keep its appearance shiny.



## Beautiful Radha Krishna Painting Kandarpa Hasti

[Read More](#)

**SKU:** 01783

**Price:** Call for price

**Stock:** instock

**Categories:** [Patachitra Paintings](#), [Wall Decor](#)

### Product Description





## Brass Buddha Head Wall Hanging 5.5 inch

[Read More](#)

**SKU:** 01198

**Price:** ₹5,040.00 inc. GST

**Stock:** instock

**Categories:** [Patachitra Paintings](#), [Wall Decor](#)

### Product Description



## Black leaves Jumbo tree Tasar Painting 20 x 46 in

[Read More](#)

**SKU:** 00986

**Price:** ₹43,680.00 inc. GST

**Stock:** instock

**Categories:** [Patachitra Paintings](#), [Wall Decor](#)

**Tags:** [patachitra art](#), [patachitra painting](#), [patachitra paintings](#), [tasar leaves painting](#), [tasar tree painting](#)

### Product Description



**Dimension:** Black leaves Jumbo tree Tasar Painting 20 x 46 inches. It depicts the nature perfect harmony and strength of life. This piece keeps things simple and modern in a classical manner. A unique piece sure to lay eyes on. **Material:** Tasar fabric. **Dimension(HW):** 46x20 inch Pattachitra is one of the oldest and popular arts of Odisha. Most themes are based on Hindu mythology, folk tales, animals, tree of nature, flowers. A quite simple display of art in an intricate way of creativity. The rich use of colors, unique portrayal of motifs, and simple design with flower borders can be strongly visualized. The colors used in the painting are purely made from natural ingredients. The white color extract from seashells was powdered soaked to make the white paste. The color green is made from the green leaf and green stones. Red is made from a local stone called Hingula. Another stone named Khandaneela was used to extract the color blue. The yellow is made from, stone named Hartal. Black is extracted by burnt coconut shell. These five colors are also called Pancha Tatwa. Every color has its own significance, as the white illustrates Laughter (Hasya), Red stands furious, astonishment in yellow. The hair of the mouse and Buffalo used to make brushes and tied to the end of a bamboo stick. The floral border makes the art astonishingly beautiful. The above painting of the jumbo tree that branches outward to the sky, represents the interrelatedness of all things in nature. A message conveying us to grow and flourish. Like the life cycle of a tree, losing its leaves then blossom more greenish with every coming season our life also experiences darkness, light, death, rebirth. So it symbolizes positive energy, fertility, and new beginnings. Use this painting on the wall of your gallery, office, Above the bed, you can hand two or more alongside each for a sophisticated look. **Care:** Wipe the surface with a soft cloth.



## Light green tree Tasar Painting 19 x 45 in

[Read More](#)

**SKU:** 00985

**Price:** ₹43,680.00 inc. GST

**Stock:** instock

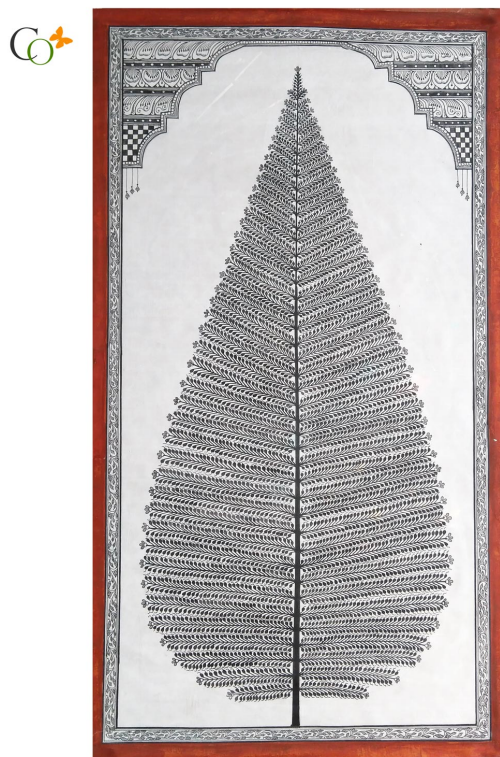
**Categories:** [Patachitra Paintings](#), [Wall Decor](#)

## Product Description

**Description:** Light green tree Tasar Painting 19 x 45 inches. Complement a diverse variety of wall decor. A charming mix of patterns gives an attractive sense of balance to any space.

**Material:** Tassar Silk **Dimension(HW):** 45.5x19.5 inch Odisha is the land of art and culture. Usually, Pattachitra is portrayed as the tale of mythology and folks. Other themes based also included. Nature-based Pattachitra Tree of life, birds, animals, etc. The colors used in the painting are purely made from natural ingredients. The white color extract from seashells was powdered soaked to make the white paste. The color green is made from the green leaf and green stones. Red is made from a local stone called Hingula. Another stone named Khandaneela was used to extract the color blue. The yellow is made from, stone named Hartal. Black is extracted by burnt coconut shell. These five colors are also called Pancha Tatwa. Every color has its own significance, as the white illustrates Laughter (Hasya), Red stands furious, astonishment in yellow, The hair of the mouse and Buffalo used to make brushes and tied to the end of a bamboo stick. The floral border makes the art astonishingly beautiful. The above Pattachitra is said to be nature-based. A spectacular art of a green tree. It keeps the wall simple and modern with the touch of local art. Give your wall a little extra ambiance. Makes the perfect use above the bed, gallery, hallway, office, you can make a twin or three pieces alongside each.

**Care:** Use a soft cloth to dust the painting.



## Black leaves tree Tasar Painting 21 x 40 in

[Read More](#)

**SKU:** 00984

**Price:** ₹39,200.00 inc. GST

**Stock:** instock

**Categories:** [Patachitra Paintings](#), [Wall Decor](#)

**Tags:** [pattachitra art](#), [pattachitra painting](#), [pattachitra paintings](#), [tasar leaves painting](#), [tasar tree painting](#)

## Product Description

Black leaves tree Tasar Painting 21 x 40 inch. An eco-friendly painting to amplify your wall anywhere in your home/office. Timeless beauty showcasing nature to be paired with your desired frame.

Material: Tassar silk

Dimension(W: H:L):39.5: 21

Chitra was painted on Patta, known as Pattachitra, as a religious offering to temples. These paintings showed mythological stories and life events of gods and goddesses. It also contained themes like nature, flowers, and animals.

The colors used in the painting are purely made from natural ingredients. The white color extract from seashells which were powdered and then soaked to make the white paste. The color green is made from the green leaf and green stones. Red is made from a local stone called Hingula. Another stone named Khandaneela was used to extract the color blue. The yellow is made from, stone named Hartal. Black is extracted by burnt coconut shell. These five colors are also called Pancha Tatwa. Every color has its significance, as the white illustrates Laughter (Hasya), Red stands furious, astonishment in yellow, The hair of the mouse and Buffalo used to make brushes and tied to the end of a bamboo stick. The floral border makes the art astonishingly beautiful.

Every picture has some signs of spirituality or religion. Above black leave tree painting, has many features from its root to branches, convey some important message for mankind. The root symbolizes stability, the branches symbolize growth.

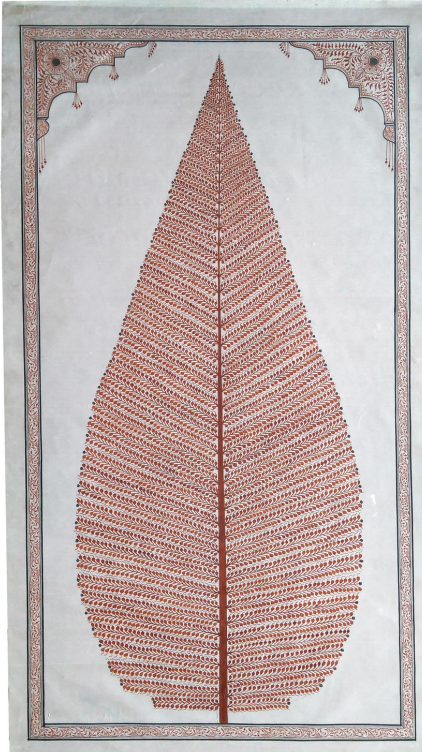
The tree also symbolizes fertility, from its seed to sapling always finds a way to keep growing like a person's ability to live, grow and develop. Trees lose their leaves in winter and appeared new fresh leaves when spring approaches. Likewise, a human faces new begins, fresh starts, and death.

One can get a calming and relaxing feel from the tree. You can decor your wall with a single piece or make a set of three paintings to display over the bed or dresser or wall of your desired option. You can play with different arrangements for the decor in ziczac.

Care: Use cotton cloth t for dusting.

---





## Dark-Red tree Tasar Painting 21 x 40 in

[Read More](#)

**SKU:** 00983

**Price:** ₹39,200.00 inc. GST

**Stock:** instock

**Categories:** [Patachitra Paintings](#), [Wall Decor](#)

**Tags:** [pattachitra art](#), [pattachitra painting](#), [pattachitra paintings](#), [tasar leaves painting](#), [tasar tree painting](#)

### Product Description

Dark-Red tree Tasar Painting 21 x 40 inches. Pair with your favorite frame, for endless decor possibilities on the wall. A vignette statement piece with a balanced visual experience.

Material: Tasar fabric

Dimension(W: H:L): 39.5: 21 inches

Patta means canvas, Chitra means picture. Pattachitra art is the most popular ancient art form of Odisha. It portrays simple themes through creative motives and unique designs. The themes are based generally on mythology, folk tales, nature, animals, and flowers. The rich color and display of art touch human emotion directly.

The colors used in the painting are purely made from natural ingredients. The white color extract from seashells was powdered soaked to make the white paste. The color green is made from the green leaf and green stones. Red is made from a local stone called Hingula. Another stone named Khandaneela was used to extract the color blue. The yellow is made from, stone named Hartal. Black is extracted by burnt coconut shell. These five colors are also called Pancha Tatwa. Every color has its own significance, as the white illustrates Laughter (Hasya), Red stands furious, astonishment in yellow, The hair of the mouse and Buffalo used to make brushes and tied to the end of a bamboo stick. The floral border makes the art astonishingly beautiful.

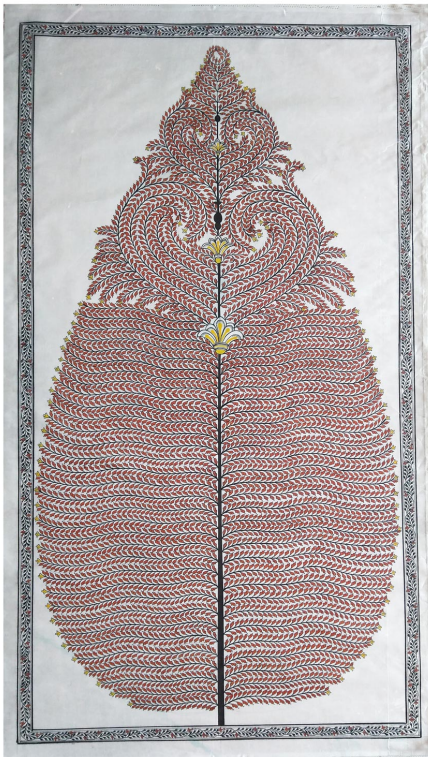
The tree symbolizes stability (the deep-rooted) and growth (the upward branches). A tree grows in the harshest condition, flood, heat, cold but withstanding in every condition likewise a human in a cycle of life faces many difficult situation but should stand with adapting challenges. Trees represent duality between life and death, like it, losses leaves in a season and blossoms new fresh leaves in another new season, human also faces darkness and light, birth and death in their life cycle. it's a symbol of growth and development I, likewise human too learn to grow and develop knowledge with experience.

Hangover the wall of the bed, dresser, hallway, office. Make a twin or triplet of the same art on the wall for stylish ambient.

Something with a more casual look rooted to traditional.

Care: Use a soft cloth to wipe the surface, to keep it dust-free.

---



## Rose-Gold Tree Tasar Painting 22 x 40 in

[Read More](#)

**SKU:** 00982

**Price:** ₹41,440.00 inc. GST

**Stock:** instock

**Categories:** [Pattachitra Paintings](#), [Wall Decor](#)

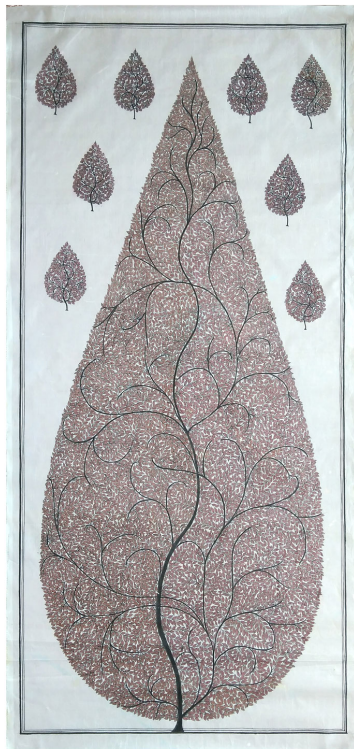
**Tags:** [pattachitra art](#), [pattachitra painting](#), [pattachitra paintings](#), [tasar leaves painting](#), [tasar tree painting](#)

### Product Description

**Description:** Rose-Gold Tree Tasar Painting 22 x 40 inches. The artistic paint offers the timeless beauty of nature for any wall. Stylish ambient provides sophisticated aesthetics.

**Material:** Tasar fabric **Dimension(HW):** 40.5x22 inch A scroll cloth painting named Pattachitra from Odisha is quite popular for its unique patterns, design, and motifs to depict mythological and folk tales from ancient Hindu scriptures. The painting on the cloth is "Pattachitra". The colors used in the painting are purely made from natural ingredients. The white color extract

from seashells was powdered soaked to make the white paste. The color green is made from the green leaf and green stones. Red is made from a local stone called Hingula. Another stone named Khandaneela was used to extract the color blue. The yellow is made from, stone named Hartal. Black is extracted by burnt coconut shell. These five colors are also called Pancha Tatwa. Every color has its own significance, as the white illustrates Laughter (Hasya), Red stands furious, astonishment in yellow. The hair of the mouse and Buffalo used to make brushes and tied to the end of a bamboo stick. The floral border makes the art astonishingly beautiful. The above Pattachitra is a piece of rose gold tree painting, a masterpiece of art done by using only minimal colors, simple and elegant to eyes upon. Use it above the bed, sideboards, or wall anywhere in the home, office, gallery. You can opt to hang two-three alongside each with a delightful feeling of the series. **Care:** Use a soft cloth to dust the painting.



## Eggplant color tree Tasar Painting 20 x 42 in

[Read More](#)

**SKU:** 00981

**Price:** ₹41,440.00 inc. GST

**Stock:** instock

**Categories:** [Patachitra Paintings](#), [Wall Decor](#)

**Tags:** [pattachitra art](#), [pattachitra painting](#), [pattachitra paintings](#), [tasar leaves painting](#), [tasar tree painting](#)

### Product Description

Eggplant color tree Tasar Painting 20 x 42 in. Nature-inspired classical touch with contemporary design and delightful approach on the wall with minimal color. The famous art of Odisha, Pattachitra. An expressive mythological tale of emotion, display through the pattern, motifs, and design. A true reflection of ancient art through sheer grace. The colors used in the painting are purely made from natural ingredients. The white color extract from seashells was powdered soaked to make the white paste. The color green is made from the green leaf and green stones. Red is made from a local stone called Hingula. Another stone named Khandaneela was used to extract the color blue. The yellow is made from, stone named Hartal. Black is extracted by burnt



coconut shell. These five colors are also called Pancha Tatwa. Every color has its own significance, as the white illustrates Laughter (Hasya), Red stands furious, astonishment in yellow. The hair of the mouse and Buffalo used to make brushes and tied to the end of a bamboo stick. The floral border makes the art astonishingly beautiful. The trees branches are reaching up to the sky, which symbolizes growth and the deep roots into the soil symbolize stabilization. The tree symbolizes fertility, never stopping growing likewise men should gain knowledge and experience throughout their lifetime. Branches sprouting of different points and different direction symbolize a person's different experiences shape them into who they are. Like a tree in his life cycle losses its leaves in winter and appear new leaves again in spring, conveying a message that a human also faces hardship but grows with every passing day, birth-death is a part of the life cycle. Keeping a piece on the wall will amplify the harmony and balance of mind. A danish approach of color and form. Make your wall better, soothing with the hues. You can use a set of these series to add more ornamentation to the wall. **Care:** A soft cloth is enough to wipe the surface and keep the painting dirt free.



## Green tree Tasar Painting 20 x 42 in

[Read More](#)

**SKU:** 00980

**Price:** ₹41,440.00 inc. GST

**Stock:** instock

**Categories:** [Patachitra Paintings](#), [Wall Decor](#)

**Tags:** [patachitra art](#), [patachitra painting](#), [patachitra paintings](#), [tasar leaves painting](#), [tasar tree painting](#)

### Product Description

Material: Tassar painting

Dimension(W:H:L): 42:20 inches

Description: Green tree Tasar Painting 20 x 42 in. This art offers a rich and artisanal appeal well suited to modern conventional decor with a twist of tradition. Sophisticated and timeless appeal

with gentle ambient.

The fascinating ancient art of Odisha "Pattachitra". Depicts Hindu mythological tales and folks along with nature, animals, and flowers through rich colors, creative motifs, and unique designs. A fine display of craftsmanship at its best. One common element found in every Pattachitra is the flower border give a sameness to the entire painting.

The colors used in the painting are purely made from natural ingredients. The white color extract from seashells was powdered soaked to make the white paste. The color green is made from the green leaf and green stones. Red is made from a local stone called Hingula. Another stone named Khandaneela was used to extract the color blue. The yellow is made from, stone named Hartal. Black is extracted by burnt coconut shell. These five colors are also called Pancha Tatwa. Every color has its significance, as the white illustrates Laughter (Hasya), Red stands furious, astonishment in yellow, The hair of the mouse and Buffalo used to make brushes and tied to the end of a bamboo stick. The floral border makes the art astonishingly beautiful.

A tree has many symbols to interconnect with human life. Just like branches strengthen with time and grow upward, human life also acquires, knowledge and experience as move through life. The deep-rooted in the earth and branches reach outward to the sky, it represents stability and growth. A tree symbolizes fertility, finds a way of growing through a seed, it signifies the vitality of a person. The branches sprouting in different directions symbolize human learning and shaping himself with different experiences. In his life cycle a tree losses its leaves in winter and flourish new fresh leaves again in the spring likewise a human also experiences darkness and light, death, birth, a fresh start in his life cycle.

Hanging a tree wall painting brings peacefulness and relaxation. A sense of calm can rip from the art. The green uplifting aesthetic painting is sure to complement any decor. The soothing texture blends with the background and stands subtle.

Care: Wipe the surface with a soft clot

---



## Green-Purple tree Tasar Painting 20 x 41 in

[Read More](#)

**SKU:** 00979

**Price:** ₹39,200.00 inc. GST

**Stock:** instock

**Categories:** [Pattachitra Paintings](#), [Wall Decor](#)

**Tags:** [pattachitra art](#), [pattachitra painting](#), [pattachitra paintings](#), [tasar leaves painting](#), [tasar tree painting](#)

### Product Description

Green-Purple tree Tasar Painting 20 x 41 inches. Feel the sense of hope and calm with a single glance at the painting " the tree of life". Your wall decor will bloom with these blue and green tree of life wall hanging.

**Material:** Tassar silk

**Dimension(WH):** 20 x 41.5 inch

Pattachitra is a traditional Indian folk art from Odisha. characterize by hand engraving on cloths, with intricate patterns, designs, and motifs. Based on Hindu mythology and folks.

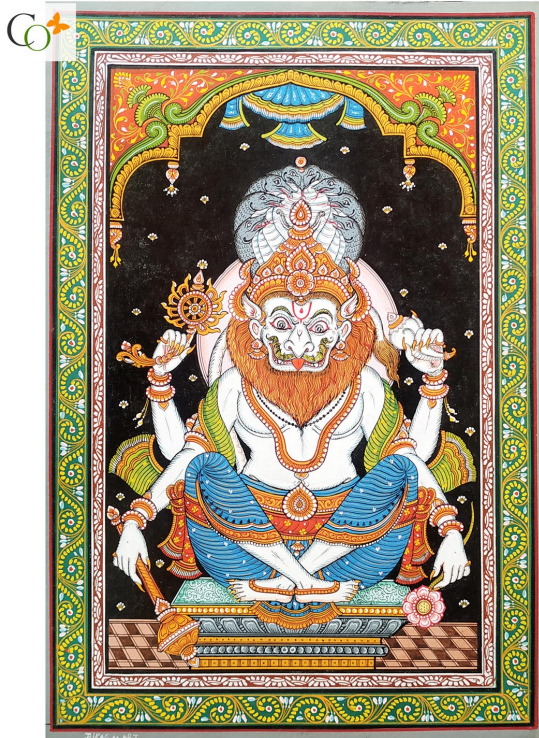
The colors used in the painting are purely made from natural ingredients. The white color extract from seashells was powdered soaked to make the white paste. The color green is made from the green leaf and green stones. Red is made from a local stone called Hingula. Another stone named Khandaneela was used to extract the color blue. The yellow is made from, stone named Hartal. Black is extracted by burnt coconut shell. These five colors are also called Pancha Tatwa. Every color has its significance, as the white illustrates Laughter (Hasya), Red stands furious, astonishment in yellow,

The hair of the mouse and Buffalo used to make brushes and tied to the end of a bamboo stick. The floral border makes the art astonishingly beautiful. A traditional lacquer coating is given to protect the painting's longevity.



The above art is a green and purple tree of life, the tree symbolizes growth, stability, beauty, and strength. The universal symbol of life. Use this piece to give your wall a touch of natural structure. Wall above the bed, sideboard, gallery, office, the decorative possibility for any space on your wall. You can even hang two or three each alongside the other.

**Care:** For dusting use a soft cloth to wipe the surface.



## Nrusingha Avatar Sitting Pattachitra Painting

[Read More](#)

**SKU:** 00863

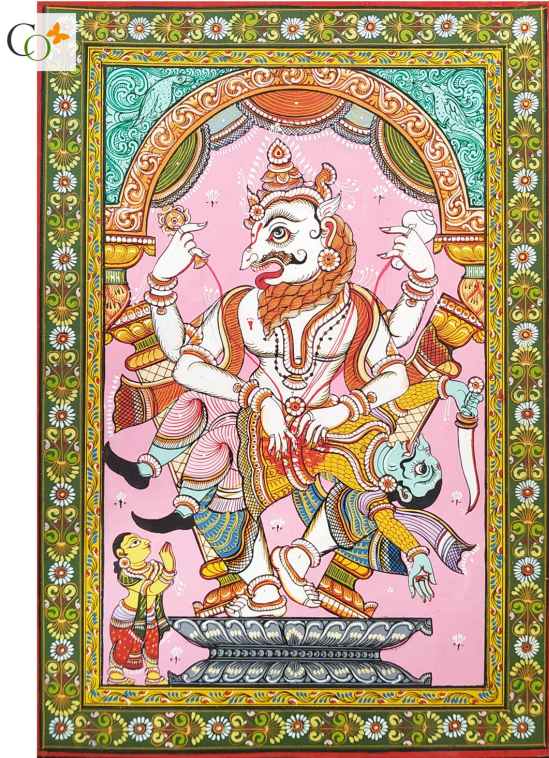
**Price:** ₹11,200.00 inc. GST

**Stock:** instock

**Categories:** [Patachitra Paintings](#), [Wall Decor](#)

**Tags:** [canvas painting](#), [lord narsimha painting](#), [lord nrusingha paintings](#), [patachitra art of odisha](#), [patachitra painting](#), [pattachitra painting](#), [wall hanging](#), [wall mount](#)

## Product Description



## Hiranyakasyap Badh Canvas Painting

[Read More](#)

**SKU:** 00866

**Price:** ₹11,200.00 inc. GST

**Stock:** instock

**Categories:** [Patachitra Paintings](#), [Wall Decor](#)

**Tags:** [canvas painting](#), [hiranyakashyap badh painting](#), [lord narsimha painting](#), [lord nrusingha paintings](#), [patachitra art of odisha](#), [patachitra painting](#), [pattachitra painting](#), [wall hanging](#), [wall mount](#)

### Product Description

---



## Lakshmi Nrusingha Pattachitra Canvas Painting

[Read More](#)

**SKU:** 00869

**Price:** ₹11,200.00 inc. GST

**Stock:** instock

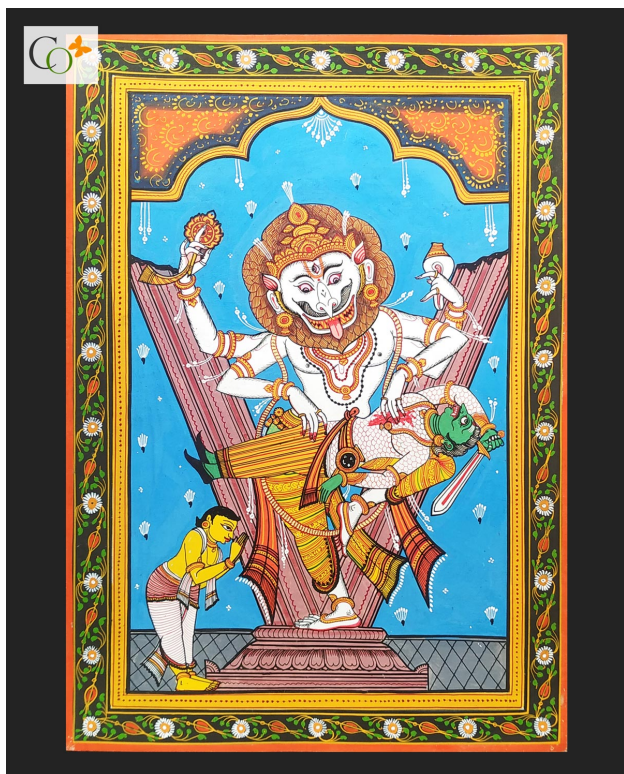
**Categories:** [Patachitra Paintings](#), [Wall Decor](#)

**Tags:** [canvas painting](#), [lakshmi narasimha paintings](#), [lord narsimha painting](#), [lord nrusingha paintings](#), [patachitra art of odisha](#), [patachitra painting](#), [pattachitra painting](#), [wall hanging](#), [wall mount](#)

### Product Description

---





## Lord Narasimha Killing Hiranyakasyap Painting

[Read More](#)

**SKU:** 00871

**Price:** ₹11,200.00 inc. GST

**Stock:** instock

**Categories:** [Patachitra Paintings](#), [Wall Decor](#)

**Tags:** [canvas painting](#), [lord narsimha painting](#), [lord nrusingha paintings](#), [patachitra art of odisha](#), [patachitra painting](#), [pattachitra painting](#), [wall hanging](#), [wall mount](#)

### Product Description

Material: Canvas Dimension(W:H:L): 18:12 Weight: 0.1 kg Description: Lord Narasimha Killing Hiranyakasyap Painting. Make a wide-reaching righteousness impact on the wall of your home or office. The brilliant unfolding of mythological stories through the art, adding expression to every detail. Patachitra means, painting on canvas. Patta means Canvas, Chitra means Painting. It narrates stories and events from the life of Hindu deities. An ancient form of art originated from the state of Odisha. The procuring and application of colors and materials are out and out natural. Five colors white, red, yellow, green, black, known as Pancha Tatwa, are used to color Patachitra. The white color bag by soaking, drying, and churning seashell. The red gets from a stone named Hingula, a local stone Haritlal is used for yellow, Green is obtained from leaves and green stones, and black is extracted from lamp soot, or either from burning coconut shell. 120 more colors are used by mixing of the Pancha Tatwa. The hair of, mouse, buffalo, and Keya roots are used to make the brush. It is then tied to a bamboo stick as a handle. The flower border on the painting makes it well thought of. Lord Vishnu took birth on earth in many forms whenever there is a need for restoration of Dharma, and balance the righteousness. Lord Narasimha is the fourth incarnation of Lord Vishnu among his ten Avatars on earth. To save his ardent devotee Prahlada from the torture of his ruthless father Hiranyakasyap. Hiranyakasyap has obtained a boon from Lord Bramha that he wouldn't get killed by any human or animal, neither in day or night, and no weapon can kill him. This boon made him secure that he started to trouble and terrorize both people from earth and the three Lokas. On the other hand, his son Prahlada was a wholehearted devotee of Lord Vishnu, which made him more furious at him, to



which he tried to kill him, and tried several ways like mangling him underfoot by elephant, poisoned, starved, burn, throwing into well, one unsuccessful attempt after another, but couldn't succeed because Lord Vishnu was protecting his devotee. But Pralhadas claims of omnipresent of his Lord made him so angry so he went up and hit a pillar with his mace asking if his Lord "Vishnu in it". To his surprise, the pillar cracked and a half man half lion appeared in the form of Narasimha. Lord Narsimha then dragged Hiranyakasyap and put him on his thigh, ripping his belly with his nails in the evening time. Lord Narasimha made Prahlada the king, and instruct him to follow ethics and good conduct and disappeared. Lord Narasimha has been seen with four arms, holding conch and Chakra in upper hands and lower hands seen tearing apart the demon, with his nails. His devotee Prahlada is seen standing beside him by joining his hands in salutation. The picture signifies the path of righteousness, by not harming anyone. The victory of good over evil. Lord Narasimha protects his devotee from mishaps and misfortune. You can use it on any wall whether office, home or shop. Care: Use a soft cotton cloth to wipe down the surface of the canvas.



## Black Krishna Balaram Mathura Visit Painting

[Read More](#)

**SKU:** 00874

**Price:** ₹11,200.00 inc. GST

**Stock:** instock

**Categories:** [Patachitra Paintings](#), [Wall Decor](#)

**Tags:** [canvas painting](#), [krishna balaram paintings](#), [Krishna Painting](#), [lord krishna painting](#), [patachitra art of odisha](#), [patachitra painting](#), [pattachitra painting](#), [wall hanging](#), [wall mount](#)



### Product Description

Material: Pattachitra painting Dimension(W: H:L): 11:17 Weight: 0.1 kg Description: Black Krishna Balaram Black Krishna Balaram Mathura Visit Painting Painting. The painting provides the ultimate sense of serenity. The black color coordination reflects classic sophistication. Pattachitra is the ancient art of Odisha. display mythology and life events of god and goddess through motifs, patterns, and figures with a floral border. The colors used in the painting are

made from natural ingredients. White color is extracted from seashells was powdered soaked to make a paste. The green color is procuring from green leaf and green stones. A local stone called Hingula, where the color red is obtained. Another stone named Khandaneela was used to get the color blue. Yellow is made from, stone named Hartal. Black is extracted by burnt coconut shell. These five colors are also called Pancha Tatwa. 120 other colors are made by using these colors. Every color has its own significance, as the white illustrates Laughter (Hasya), Red stands furious, astonishment in yellow. The hair of the mouse and Buffalo used to make a brush and tied to the end of a bamboo stick. The floral border makes the art astonishingly winsome. Krishna is the son of Devaki and Vasudeva while Balarama was the elder son of Rohini, the first wife of Vasudeva. Kansa who was the brother of Devaki had a prognosis that the eighth child of Devaki and Vasudev will be the reason for his end, to which Kansa has imprisoned his sister and her husband and made sure none of their children make it to life. However, on the night of Lord Krishna being born a divine voice-guided Vasudeva to take Krishna from the prison across river Yamuna to the home of Nandaaraj and his wife Yashoda, who also gave birth to a girl on the same night. Vasudeva went to Nandaraj's house and exchanged the newborn, and headed back to the prison. Stories about Krishna's deed spread around when Kansa hear the news he made sure that it is the eighth child who was alive, so he planned to invite him to Mathura with the intention to kill him. so Krishna and Balarama went to Mathura with Ankura an old minister of Kansa. The above painting depicts Krishna Balaram Mathura Visit. Lord Krishna was born to save humanity from terrible rulers and kings. Balarama who is also known as Balabhadra is a symbol of strength, an obedient son, an ideal brother. He also symbolizes duty, honesty, and simplicity. He is known as the eighth incarnation of Bishnu and Seshnaag. The pictures have incredible attention and traditional handicraft enough to lure the decoration of the wall. A great piece of Eye-catching art, contrast with overwhelming quality of shades. Can be fit into any wall, of home or office, shop, hallway, etc. Care: Wipe down the surface with a soft cloth to get rid of dust.

---



## Radha Krishna Jugala Rasa Tasar Painting

[Read More](#)

**SKU:** 00840

**Price:** ₹28,560.00 inc. GST

**Stock:** instock

**Categories:** [Patachitra Paintings](#)

**Tags:** [canvas painting](#), [home décor](#), [interior designing](#), [lord krishna painting](#), [odisha paintings](#), [pattachitra art](#), [pattachitra paintings](#), [radha krishna painting](#), [tasar paintings](#), [wall decor](#)

### Product Description



## Black and White Astabhuja Dancing Ganesha Painting

[Read More](#)

**SKU:** 00829

**Price:** ₹40,320.00 inc. GST

**Stock:** instock

**Categories:** [Patachitra Paintings](#)

**Tags:** [b/w paintings](#), [canvas painting](#), [dancing ganesha painting](#), [ganesh painting](#), [home décor](#), [interior designing](#), [monochrome paintings](#), [odisha paintings](#), [pattachitra art](#), [pattachitra paintings](#), [tasar paintings](#), [wall decor](#)

### Product Description



**Description:** Black and White Astabhuja Dancing Ganesha Painting. An encompassing black and white is always a statement with a golden theme. And make a splash with contrasting colors to ornament the wall.

**Material:** Tasar fabric

**Dimension(HW):** 36x24 inch

**Weight:** 0.1 kg

Patta means cloth, Chitra means picture, thus Pattachitra is, painting on a piece of cloth. The events of mythology, folks, nature, animals are depicted in Pattachitra.

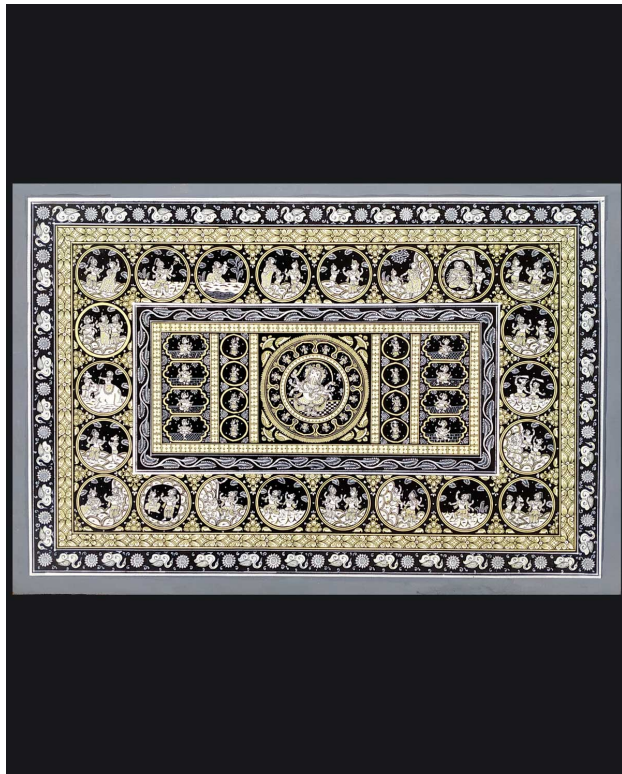
The colors used in the painting are purely made from natural ingredients. The white color extract from seashells which were powdered and then soaked to make the white paste. The color green is made from the green leaf and green stones. Red is made from a local stone called Hingula. Another stone named Khandaneela was used to extract the color blue. The yellow is made from, stone named Hartal. Black is extracted by burnt coconut shell. These five colors are also called Pancha Tatwa. Every color has its significance, as the white illustrates Laughter (Hasya), Red stands furious, astonishment in yellow, The hair of the mouse and Buffalo used to make brushes and tied to the end of a bamboo stick. The floral border makes the art astonishingly beautiful.

Known as the god of the beginning, Lord Ganesha. Gana means people, Pati means Lord, thus his name stands for "Lord of the people." He is known for removing obstacles from his devotee's paths and leading them to success. He symbolizes wisdom, understanding, and intellect.

**Placement:** As he is the embodiment of all devotees, keeping his pictures of him in-home or office will shower uninterrupted divinity in life. North, west, and Northeast are considered to be the most favorable zone for keeping the picture. Jewell colors and black creates a deliciously dark contrast on the background.

**Care:** Use a soft brush or cloth to wipe the picture.

---



## Ganesha Story Black-Yellow Pattachitra Painting

[Read More](#)

**SKU:** 00771

**Price:** ₹12,880.00 inc. GST

**Stock:** instock

**Categories:** [Patachitra Paintings](#), [Wall Decor](#)

**Tags:** [canvas painting](#), [home décor](#), [interior designing](#), [odisha paintings](#), [pattachitra art](#), [pattachitra paintings](#), [wall decor](#)

### Product Description

---



## Colourful Radha-Krishna Chandua Style Pattachitra Painting

[Read More](#)

**SKU:** 00773

**Price:** ₹11,200.00 inc. GST

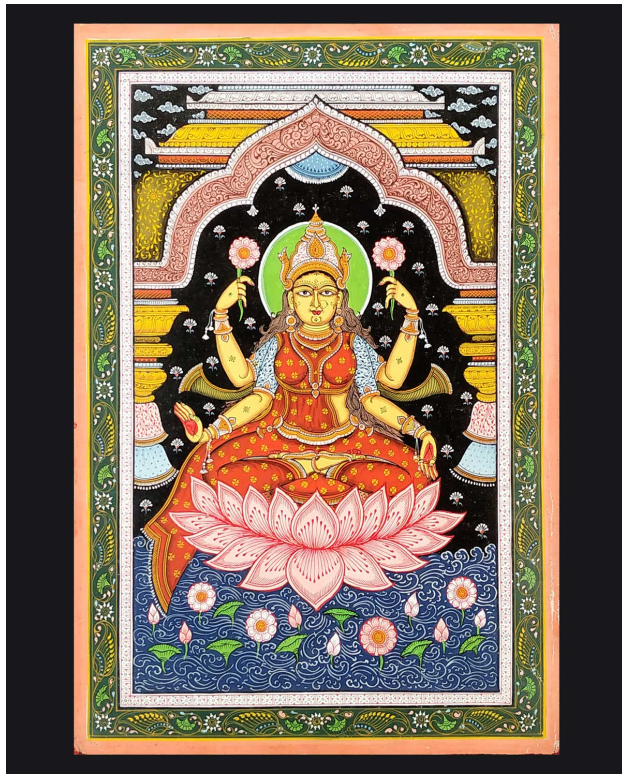
**Stock:** instock

**Categories:** [Patachitra Paintings](#), [Wall Decor](#)

**Tags:** [canvas painting](#), [home décor](#), [interior designing](#), [odisha paintings](#), [pattachitra art](#), [pattachitra paintings](#), [wall decor](#)

### Product Description

---



## Colourful Maa Lakshmi Pattachitra Canvas Painting

[Read More](#)

**SKU:** 00775

**Price:** ₹11,200.00 inc. GST

**Stock:** instock

**Categories:** [Patachitra Paintings](#), [Wall Decor](#)

**Tags:** [canvas painting](#), [home décor](#), [interior designing](#), [odisha paintings](#), [pattachitra art](#), [pattachitra paintings](#), [wall decor](#)

### Product Description

Material: Canvas cloth

Dimension(W:H:L): 19:13

Weight: 0.1 kg

Description: Colorful Maa Lakshmi Pattachitra Canvas Painting. Splash of contemporary color to pop up on any of your walls. A charming option to spread divinity all around.

The art of Pattachitra dates back over a thousand years. A traditional art depicts stories of Hindu deities. It displays stories through motifs, design, and various patterns.

The smearing of colors is purely natural. Five colors white, red, yellow, green, black, known as Pancha Tatwa been used to color the canvas. The white color is procured by soaking, drying, and churning seashell, The red color is derived from a stone named Hingula, yellow is obtained from a stone Haritlal, Green is secured from leaves and green stones, and black is obtained from lampblack, or either from burning coconut shell. 120 more colors are used by mixing of the Pancha Tatwa color. The hair of, mouse, buffalo, and Keya roots are used for brush for the painting. It is tied to a bamboo stick as a brush handle. The flower border on the painting makes it more impressive

Laxmi is the household goddess of most Hindu families. The word Laxmi is derived from the



Sanskrit words Lakshya. She is the goddess of wealth and prosperity and fortune. Goddess Laxmi rises out of the churning of the milky ocean, known as "Khira Sagar" during the tug of war between the god and demons, seated on a full blossomed lotus. She herself choose Lord Vishnu as her husband.

Se has always been associated with Lord Vishnu. Whenever Lord Vishnu, took birth on earth in human form, goddess Laxmi also incarnated as human form along with him. When Lord Vishnu incarnated as Vamana, Goddess Laxmi incarnated as the Padma. When Lord Vishnu incarnated as Parasurama, Goddess Laxmi incarnated as Dharani. When Lord Vishnu incarnated as Lord Krishna, Goddess Laxmi incarnated as Rukmani. When Lord Vishnu incarnated as Rama, Goddess Laxmi incarnated as Sita.

The pictorial depiction shows her with four arms, holding a lotus in both upper hands. Right hands gesture the Varada mudra which bestows wealth and prosperity and the left in Abhay mudra, she bestows courage and strength to the devotee. Sitting upon a full blossomed lotus, often in the blue ocean. Always with a calm and soothing expression.

She resides in places of hard work, bravery, and integrity. It is very auspicious to have a picture of her in office, shops, wherever monetary transaction takes place. In a festival like Dewali, you can consider it as an uncommon gift to your dear one or for your employee.

Care: Use a cotton cloth to wipe down the surface



## Krishna Holding Mountain Pattachitra Painting

[Read More](#)

**SKU:** 00776

**Price:** ₹8,400.00 inc. GST

**Stock:** instock

**Categories:** [Patachitra Paintings](#), [Wall Decor](#)

**Tags:** [canvas painting](#), [home décor](#), [interior designing](#), [odisha paintings](#), [pattachitra art](#), [pattachitra paintings](#), [wall decor](#)

Product Description

---