



## Sandstone Animal Horse Statue Set for Vastu Home and Garden Decor

[Read More](#)

**SKU:** 01515

**Price:** Call for price

**Stock:** instock

**Categories:** [Animals & Birds Statues](#), [Garden Sculptures](#), [Hindu Statues](#), [Statues & Sculptures](#)

**Tags:** [Animal Statue for Garden](#), [Animal Statue for Home](#), [Ashwa Murti](#), [garden decor](#), [Garden Stone Statue](#), [Godha Murti](#), [home décor](#), [Horse Idol](#), [Horse Sculpture](#), [Horse Sculpture for Outdoor](#), [Horse Statue for Garden](#), [Horse Statue for Home](#), [Outdoor Stone Statue](#), [Statue for Home](#), [Stone Statue Manufacturer](#)

### Product Description

The sculptural option of horse statue will help you to set the focal point of your home and garden. This horse duo combines beauty with sustainability in one streamline. Over 1.5 ft rustic animal statue has endless potential application.

**Material:** Sandstone Redstone **Dimension(HWL):** 18 x 24 x 9 inch **Height:** 1.5 ft **Width:** 2 ft

**Position:** Standing **About the subtle rustic flair statue:**

- The statue of the horse is standing on a pedestal, with hand-engraved on the sandstone.
- Stone carving is the age-old craft of Odisha.
- Sandstones are weatherproof. That's why you may find them in many temples, monuments, and other exterior works.
- The skillful artists use the stone to engrave with many artisanal majestic on the stone.
- The figures of elephants, lions, and horses are a common sight at temple entrances.

**The horse statue has a remarkable role in Hindu mythology :**

- According to Hindu mythology, horses are symbols of loyalty, stamina, and respect.

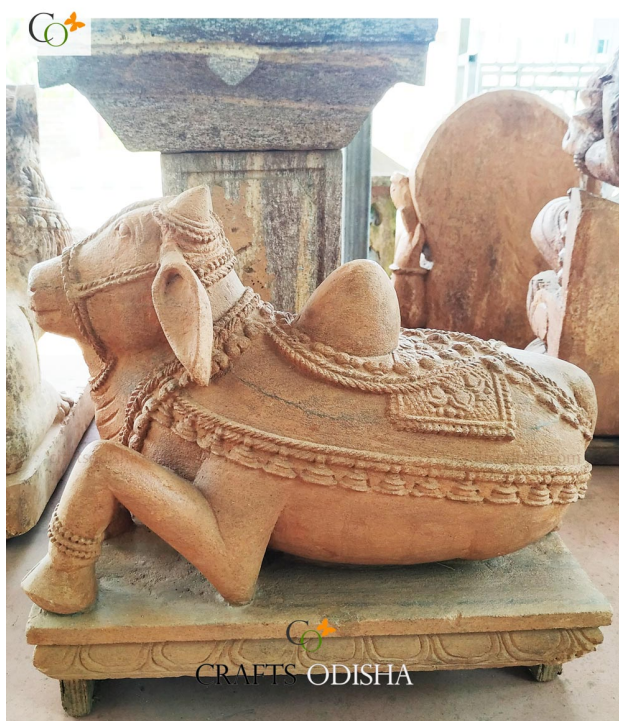
- The horse is the chariot of Lord Surya(sun).
- The first horse has emerged from the churning of the ocean of milk(Samudra Manthan), it was known by the name of Uchchaihshravas.
- The Ashwamedha Yagya was performed by Lord Shri Ram. He holds the sacrificial ritual of the horse after being positioned as the ruler of Ayodhya.

### Disposal and benefits of the arresting horse statue:

- Concerning Vaastu, the horse statues should always be kept in the southern direction, beneficial for fame, career, and prosperity.
- The pair is beneficial for business settings, offices, and other areas where you want to grow your wealth and success.
- Use it in your park, garden, lawn using many more pairs as the area required in landscaping, the front yard of your home, office, apartment, and restaurant.
- Horses are used at the entrance of temples, specifically, of female Goddesses.

### Safekeeping and cleaning instruction:

- Sandstones are weatherproof and best to be used in outdoor ornamentation. So, cleaning should be done every second day. So dust wouldn't accumulate on the surface of the outdoor statue.
- Using a broom or dry cloth for dusting is enough for the Outdoor Stone Statue.



## Sand Stone Nandi Statue Garden

[Read More](#)

**SKU:** 01514

**Price:** Call for price

**Stock:** instock

**Categories:** [Animal](#)  
[Sculptures](#), [Hindu S](#)

**Tags:** [Animal Statue](#)  
[Home](#), [Bull Idol](#), [gar](#)  
[home décor](#), [Marble](#)  
[Statue](#), [Nandi Sculp](#)

[Puja](#), [Nandi Stone Idol](#), [Outdoor Stone Statue](#), [Shiv Bahan Nandi Idol](#), [Shiv Ji Nandi Statue](#), [Statue for Home](#), [Stone Bull Sculpture](#)

## Product Description

A classic statue of the Nandi bull, sitting on a flat surface, is sculpted to bestow grace anywhere it is placed. It is a piece of serenity and divinity with superior durability. **Material:** Sandstone Redstone **Dimension(HWL):** 10 x 15 x 6 inch **Height:** 10 inch **Width:** 15 inch **Position:** Sitting

### Features about the graven image:

- The heavenly image is sitting on a plinth base, with one leg tucked on the body while the other is raised.
- The bull is well carved, embellished with ornaments while engraving on the stone.
- The blankets on his back, double row of necklace, the bull rope, resin, and the cowbell hanging on his neck are all well carved on the sculpture giving it a life-like look.
- The decorative engraved strap encircles his body, tied in a nut.
- The brilliancy of craftsman on stone carving in Odisha is well known around the globe.

### The holy relationship of Godlike bull Nandi with Hindu deity:

- The name "Nandi" means "giving joy". The sacred bull of Lord Shiva.
- Nandi is widely known as the guardian deity of Kailasha, where Lord Shiva lives, according to the Hindu scriptures.
- In every temple of Lord Shiva, a humped bull (male zebu) is seen reclining on a raised platform facing the entrance door of the Shiva Lingam, is seen perpetually gazing on the god.
- In many traditions, devotees conveying their wish in his ears is believed to be granted.

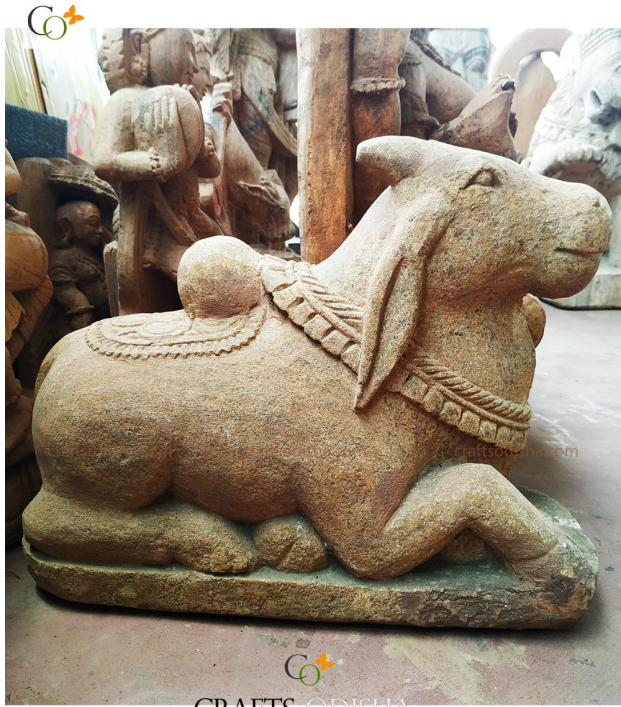
### The sacred placement possibility of the holy bull:

- Bulls are often placed in the entryway of most Hindu temples of Lord Shiva.
- Placing a Nandi bull in the southwest zone of your office or house will attract loyal customers and clients to your business. It saves the business from loss and unforeseen.
- Also helps to get rid of unemployment, lack of promotion for a long time, a smooth path to study abroad, and for the dairy business. Keeping at the west will be favorable.
- You can use it for decorating the garden as a life-size bull, sure to be a showpiece to any garden.



**Instruction to follow while cleaning:**

- Sandstone is the most durable and weatherproof material, it gets excellent with age.
  - Cleaning of sandstone sculpture is not so hard. Only attention should be given on an alternative day to get rid of the dirt compiled on the sculpt.
  - Use a broom or a cloth to wipe down the surface of the statue.
- 



CRAFTS ODISHA

**Sand Stone Sitting Bull Animal Statue for Temple and Garden**[Read More](#)**SKU:** 01513**Price:** Call for price**Stock:** instock**Categories:** [Garden Sculptures](#), [Statues & Sculptures](#)**Tags:** [Animal Statue for Garden](#), [Animal Statue for Home](#), [garden decor](#), [Garden Stone Statue](#), [home décor](#), [Nandi Bull Statue](#), [Nandi Sculpture for Temple](#), [Nandi Statue for Puja](#), [Nandi Stone Idol](#), [Outdoor Stone Statue](#), [Shiv Bahan Nandi Idol](#), [Shiv Ji Nandi Statue](#), [Statue for Home](#), [Stone Bull Sculpture](#), [Stone Statue Manufacturer](#)**Product Description**

---



## Sandstone Snake Statue for Temple and Garden Ornaments

[Read More](#)

**SKU:** 01512

**Price:** Call for price

**Stock:** instock

**Categories:** [Animals & Birds Statues](#), [Garden Sculptures](#), [Hindu Statues](#), [Statues & Sculptures](#)

**Tags:** [Animal Statue for Garden](#), [Animal Statue for Home](#), [garden decor](#), [Garden Stone Statue](#), [home décor](#), [Naag Devata Murti](#), [Outdoor Stone Statue](#), [Snake Sculpture for Garden](#), [Snake Statue for Temple](#), [Statue for Home](#), [Stone Snake Idol](#), [Stone Snake Statue](#)

### Product Description

A piece of the snake statue that will make your garden look ferociously unique. This sandstone statue perfectly highlights the simplicity and complexity of stone carving in one go. **Material:**

Sandstone Redstone **Dimension(HWL):** 12 x 6 x 5 inch **Height:** 1 ft **Position:** Standing

#### Highlights of the handpicked stone sculpture of the snake:

- The snake statue stands on the flat surface in the ground for better stability.
- A distressed finish has been given to the statue to lend the illusion of age.
- The scute design given by the skilled artisans has given the sculpt a life-like feeling.
- The art of stone carving in Odisha is an age-old practice, which can be seen in many jewels like temple buildings, various art crafts, etc.

#### Religious faith in the deific snakes in Hindu belief:

- In Hinduism, snakes have a prominent role in Hindu Mythology. They are worshipped widely as a deity.
- A special day is performed to celebrate Nag Panchami in every month of Shravana.
- Lord Shiva is always seen wearing a snake around his neck named Vasuki.
- Vasuki is the same snake that was used in the churning of the milk ocean(Samudra Manthan).

- Mansa Devi is the Hindu Goddess, known as the sister of Vasuki worshiped mainly as the goddess of snakes.

### Suggestion for placement of the divine statue:

- The sacred place is firstly in temples, dedicated to Lord Shiva where snakes get worshipped over the sacred Lingam of Lord Shiva.
- Another place to sit him up at atop of temples of Lord Shiva.
- Use it in your garden, landscaping, in the mid of an artificial water body, between the flowery hays, by decorating a few stones, around it.
- In the zoo, near the fountain, swimming pool are a few more options where you can sit the rustic statue as per your decoration.

### Guidance to follow while cleaning the statue:

- Sandstone is the most durable material, so it is extremely easy to take care of.
- Simply bathe the garden statue with running water.
- You can use a cloth or a broom to wipe the stone sculptures.



## Dual Body Single Face Dopichha Lion for Temple Garden Decor

[Read More](#)

**SKU:** 01510

**Price:** Call for price

**Stock:** instock

**Categories:** [Lion Statues](#), [Animals & Birds Statues](#), [Garden Sculptures](#), [Hindu Statues](#), [Statues & Sculptures](#)

**Tags:** [Animal Statue for Garden](#), [Animal Statue for Home](#), [Do picha Singha Murti for Mandir](#), [Dopicha Lion Statue for Temple](#), [garden decor](#), [Garden Stone Statue](#), [home décor](#), [Lion Sculpture](#), [lion statue for temple](#), [Outdoor Stone Statue](#), [Statue for Home](#)

### Product Description



Admire this unique statue of single-faced dual body lion, the king of the jungle will lend a crowning touch to any outdoor decoration. The intriguing stone carving unearths the mythical beast. **Material:** Sandstone / Red stone **Dimension(HWL):** 12 x 15 x 15 inch **Width:** 15 inch **Position:** Sitting

### **The lineament of the quirky sculpture:**

- The dual body beast is sitting on a flat pedestal with a fierce look.
- The uniqueness has been seen from the single face over the dual body of the sculpture.
- This artisanal majestic statue has been carved by the skillful craftsman of Odisha.
- With the stone and chisel, the artisans have given brilliant expression and features to the sculpture, enough to make you speechless.

### **The mythological belief of lions in Hindu:**

- The lion has served as a Vahana to many Hindu deities like Goddess Durga, Goddess Parvati, Goddess Narasimhi, Goddess Katyayini, Goddess Skandamata, etc.
- In Buddhist culture, statues of lions are said to bring peace and prosperity.
- Lord Vishnu took half lion half man form in his Narasimha Avatara.
- The lion symbolizes pride that's why it is sat on each side at the entrance of many Hindu temples It is believed that they protect and guard the temple.

### **Tip-off some ideas to place the sui generis stone sculpture:**

- You can place it at the entrance of any holy temple or atop of the temple.
- It also represents energy and happiness. So placing it in front of the home or the office is also beneficial.
- You can choose to flank any entryway of the garden, lawn, and zoo with a unique piece.
- You can place two same pairs of lions on each side of the entryway of the home, garden, or any desired area of your choice. This shows power, strength, and wisdom.
- You can place it in the landscaping design, besides the fountain, swimming pool, or can place it above any pillared structure center decoration.

### **Care and maintenance instruction for the decorative stone:**

- Sandstone is a material that can stand in any weather. It is popular for its durability.
- Give a bathe to the sculpture in running water, or you can simply wipe the statue with a cloth or broom to get rid of dust.
- This should be done every other day.



## Odisha Sandstone Nandi Bull Statue for Temple and Garden Decor

[Read More](#)

**SKU:** 01504

**Price:** Call for price

**Stock:** instock

**Categories:** [Animals & Birds Statues](#), [Garden Sculptures](#), [Hindu Statues](#), [Statues & Sculptures](#)

**Tags:** [Animal Statue for Garden](#), [Animal Statue for Home](#), [garden decor](#), [Garden Stone Statue](#), [home décor](#), [Nandi Sculpture for Temple](#), [Nandi Statue for Puja](#), [Nandi Stone Idol](#), [Outdoor Stone Statue](#), [Shiv Ji Nandi Statue](#), [Statue for Home](#)

### Product Description



## Garden Umbrella (GU-01)

[Read More](#)

**SKU:** 00568

**Price:** ₹10,080.00 Original price was: ₹10,080.00. ₹8,960.00 Current price is: ₹8,960.00. inc. GST

**Stock:** instock

**Categories:** [Accessories](#), [Parasols & Garden Umbrellas](#)

**Tags:** [big size umbrella](#), [garden decor](#), [garden umbrella](#), [home décor](#), [lawn umbrella](#), [terrace umbrella](#)

### Product Description



Do you like going for picnics? Or do you have a lawn to have a gala time with your family? So here is the perfect product you need to beat that sun away from spoiling your favourite time. Grab this giant umbrella with chandua print straight from the skilled craftsmen of Odisha at a very affordable price. The colorful design and beautiful pattern along with the elephant patches at the edge of this umbrella makes it captivating and is really attractive. So don't wait for too long and grab this amazing summer essential before it's too late.

---

## Garden Umbrella (GU-02)

[Read More](#)

**SKU:** 00569

**Price:** ~~₹10,080.00~~ Original price was: ₹10,080.00. ₹8,960.00 Current price is: ₹8,960.00. inc. GST

**Stock:** instock

**Categories:** [Accessories](#), [Parasols & Garden Umbrellas](#)

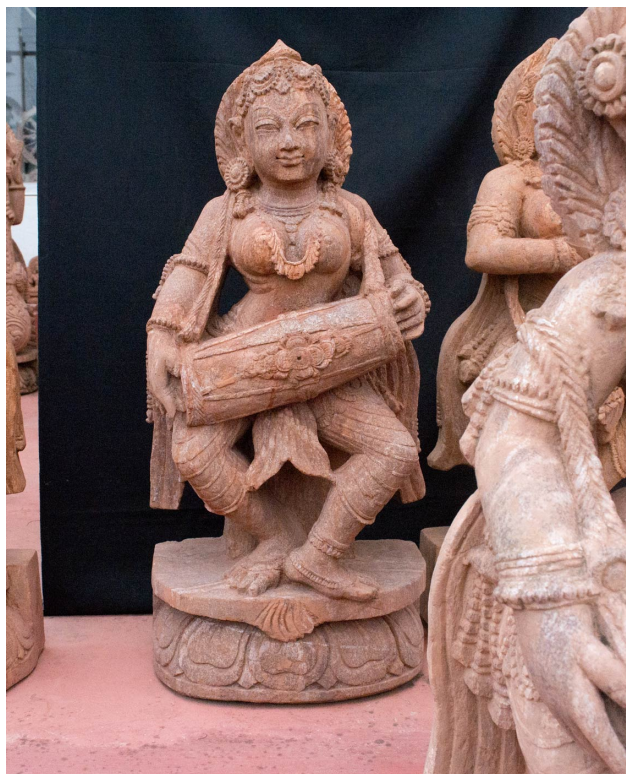
**Tags:** [big size umbrella](#), [crafts odisha](#), [garden decor](#), [garden umbrella](#), [home décor](#), [outdoor umbrella](#), [terrace umbrella](#)



## Product Description

CRAFTS ODISHA has a perfect summertime gift for you that you need to keep the sun away from spoiling your favourite vacation time with your family. Here is a giant umbrella with blue and red alternate patches with varied colorful prints precisely designed and prepared by the skilled chandua workers of Odisha at a very affordable price. The colorful design and beautiful patterns along with the elephant patches at the edge of this umbrella makes it captivating and is really attractive. So don't wait for too long and grab this amazing summer essential before it's too late.

---



## Dancing apsara holding dholak sandstone statue 29 inch

[Read More](#)

**SKU:** 00600

**Price:** ₹30,000.00 inc. GST

**Stock:** onbackorder

**Categories:** [Apsara Sculpture Khajuraho](#) | [Angel Statue](#), [Hindu Statues](#), [Statues & Sculptures](#)

**Tags:** [garden decor](#), [garden statue](#), [home décor](#), [New Arrivals](#), [outdoor statue](#), [red stone](#), [sandstone](#), [stone statue](#)

### Product Description

The exquisitely crafted design of the Dancing Asara holding dholak statue of 2.5 ft is a beautiful stand-alone display. The wide base for better stability and smooth curves is a sculptural appeal to capture the eye far across the distance. **Material:** Sandstone / Khondalite Stone Statue **Height:** 2.5 ft **Dimension(HWL):** 29 x 14 x 8 inch **Position:** Dancing **Features of the mesmerizing stone sculptures:**

- The enthrall statue of apsara is seen dancing on a two-layer lotus pedestal, playing a dholak.
- If you look at her expression she is seen, fully lost in the sound of the drum and dancing with all one's heart.
- The beads of armlet, bangles, earrings, necklaces, head jewelry, anklets are finely engraved on her body beautifully.
- The soothing aspect of the stone sculptures is chiseled so creatively by the brilliant artisans of Odisha where stone carving is a major handicraft among all.

### Apsara: The embodiment of beauty and skilled artists

- In many Hindu mythology and scriptures Apsara has many significant roles. Like Rambha, Menaka, Urvashi, are a few exemplary names you must have heard of.
- They are said to have emerged from the churning of the milk ocean.
- Usually, Gandharvas are their husbands, together they live in the palace of Lord Indra.

- Not only they are queens of beauty, but also they are exceptionally good at dancing and skill of singing.

### **Where and how to keep stone sculptures of Apsara:**

- Consider making it used in your interior design of the hotel, restaurant, palace, and home.
- Installing it on each side of your entrance of the home, restaurant, marriage hall, and hotel will make your first impression amazingly good.
- Place the stone sculpture in your garden, park, and landscaping to give it a classic touch.
- You can also place the outdoor stone statue beside the artificial water body, fountain, and swimming pool, etc. for a more soothing look.

### **Few advantages of placing the outdoor stone statue of beautiful Apsara:**

- Under Vaastu, the east and Northeast zone distribute the zone of happiness and refreshment, so keeping it in the specified zone, will attract joy and happiness into your life.
- Artists associated with singing and dancing are recommended to keep the statue west and the Southwest zone will be very beneficial.
- Always face the stone sculptures outward at the entrance of your home, which will attract positive energy inside your home.
- This statue has so much soothing and positive energy to calm your soul and mind.

### **Tips to follow while taking care of the outdoor sandstone statue:**

- The profound stone statue is made of Sandstone, it is the most durable material for outdoor embellishment.
  - The chief advantage of Sandstone is that it is a weatherproof material.
  - You can clean the statue using a piece of dry cloth and broom over the surface.
  - The dusting should be done periodically to keep the dirt away from the stone sculptures.
-





## Sandstone dancing apsara playing munjeera statue 30 inch

[Read More](#)

**SKU:** 00598

**Price:** ₹30,000.00 inc. GST

**Stock:** onbackorder

**Categories:** [Apsara Sculpture Khajuraho](#) | [Angel Statue](#), [Hindu Statues](#), [Statues & Sculptures](#)

**Tags:** [garden decor](#), [garden statue](#), [home décor](#), [New Arrivals](#), [outdoor statue](#), [red stone](#), [sandstone](#), [stone statue](#)

### Product Description

Here the sandstone dancing apsara is presented playing a munjeera with both hands in graceful tribhanga form with peaceful facial expression. Apsaras are the beautiful maidens of the courtyard Lord Indra. The definition of perfection and beauty, the persona of elegance and grace. The Apsaras are the wife of the Gandharvas and are seductive. This beautiful sand stone Apsara sculpture is meant for the beautification of the house and office. This stone sculpture can also be used for garden decoration.

---



## Sandstone Dog Animal Statue Set for Home and Garden Decor

[Read More](#)

**SKU:** 01520

**Price:** ₹73,920.00 inc. GST

**Stock:** onbackorder

**Categories:** [Animals & Birds Statues](#), [Garden Sculptures](#), [Hindu Statues](#), [Statues & Sculptures](#)

**Tags:** [Animal Statue for Garden](#), [Animal Statue for Home](#), [garden decor](#), [Garden Stone Statue](#), [Handicrafts of Odisha](#), [home décor](#), [Odisha Handicrafts](#), [Odisha Stone Handicrafts](#), [Outdoor Stone Statue](#), [Sand Stone Sculpture Manufacturer](#), [Statue for Home](#), [Stone Dog Sculpture](#), [Stone Dog Statue](#)

### Product Description

**The man's best friend, a set of two dog animal statues represents the love and loyalty of a true friend. Standing over a 2 ft tall is perfect to guard and visual interest to any outdoor decoration. Material:** Sandstone / Redstone **Description(HWL):**

18 x 24 x 9 inch

**Height:** 1.5 ft (approx.)

**Width:** 2 ft (approx.) **Position:** Standing **The accent of the innocent pair:**

- The duo is standing over a flat plinth.
- To showcase the simplicity with elegance, no ornamentation has been done to the natural being.
- The artisans of Odisha have made fame from their stone carving worldwide.
- Engraving on stones from simple to intricate carvings, by giving it a life-like creature is breathtaking to see, of the skilled artisans of Kalinga.

### Importance of the human's best friend in Hindu mythology:

- He is the mount of Lord Kalabhairava (The fearsome form of Lord Shiva).
- They were known as the protector of the gates of heaven as well as of hell.

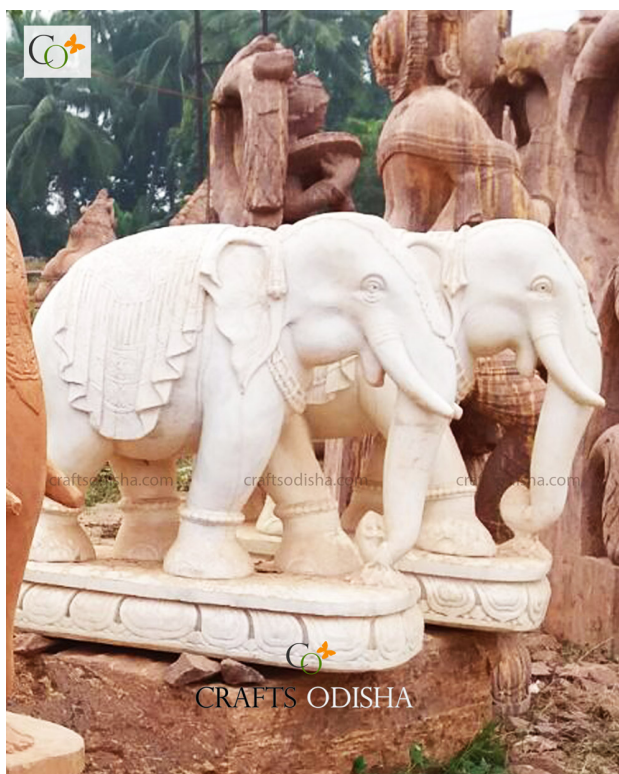
- In many beliefs, people suffering from the ill effects of planets like Rahu and Shani get relief when they feed dogs.
- Lord Dattatreya is also associated with four dogs, the four dogs symbolize the four Vedas.
- In Mahabharata, it is the only dog who accompanied King Yudhistira to Heaven.

### Where to place the man's best friend statue:

- The south direction of your home will be favorable to keep the statue of the dog, it gives strength and confidence to the head of the family.
- Why not keep a set of two or more in the garden, landscaping, front yard for a visual interest full of cuteness.
- Their many placement opportunities to place the duo like decoration near swimming pool, fountain, zoo, driveway, etc.

### Caring instruction for the outdoor Stone Statue:

- Sandstones are long-lived material, weatherproof, and get more beautiful with age.
- Cleaning should be done on alternative days to get rid of any dust accumulated on the surface.
- You need a cloth or a brush for dusting, otherwise, you can clean it with running water also.



## Marble Large Set for Home

[Read More](#)

**SKU:** 01517

**Price:** ₹588,000.00

**Stock:** onbackorder

**Categories:** [Elephant](#), [Garden Sculptures](#), [Sculptures](#)

**Tags:** [Animal Statue](#), [Home](#), [Elephant Idol](#), [for Home](#), [Elephant](#), [Elephant Statue](#), [Marble](#), [Stone Statue](#), [home](#)



, [Outdoor Stone Statue](#), [Pathar ki Haathi Murti](#), [Statue for Home](#), [Stone Statue for Temple](#), [Stone Statue Manufacturer](#), [Vastu Elephant Idol](#)

## Product Description

**The sublime white stone elephant pair of success is one of those gorgeous pieces of décor from the magnificent artisans of Odisha, that everyone will grasp of the chance for owing it. The large elephant statue which is made from marble is not only very tony but also serves importance in the context of Vaastu and Fengshui.**

**Material:** Marble stone statue **Dimension(HWL):** 36 x 18 x 36 inch **Position:** Standing

**Height:** 3 ft **About the elegant statue:**

- The architectural design of the large elephant standing on the lotus pedestal will not only grab your attention for its mesmerizing look but also brings beauty and serenity into your life.
- The craft made on the white marble finish has something for everyone, who adores architecture.
- Elephant trunks have their own significance in their position. When the trunk is in the upward direction, it is considered good luck and fortune to the family. When the trunk is positioned downward direction, it represents the ability to solve challenges and longevity.
- White elephants are symbolism of richness, luxury, and wealth.

## Guidance for placement and use :

- If you have a wide entrance at your home, palace, or mansion, then place the duo in such a way that they face outward for bringing positive results.
- Elephants are symbols of wisdom. When the truck of the elephant is positioned downward it is, favorable for the office and warehouse. So placing them, in the office, home, a workstation will boost your career, job, and leadership quality. It is also helpful to overcome various tasks and obstacles.
- The marble outdoor stone statue is felicitous in the park, landscape designing, zoo.
- Decorate your garden with a beautiful pair of elephants.
- You can place them on both sides near the pool or fountain which will make you go aww.

## The religious significance of the Elephant stone sculptures:

- The elephant is the riding vehicle of Lord Indra.
- The white elephant is the riding vehicle of Goddess Laxmi.

- The elephant is also associated with the Ganesha statue.
- In Buddhism also, the elephant signifies our passionate and uncontrolled mind which can be disciplined through meditation.

### How to clean and care :

- To keep the glossy white gaze shining, wipe it with a dry cloth or damp the cloth in the water and wipe it down on the surface. As its purpose of outdoor placement, cleaning should be done daily basis so that dust won't be gathered on the surface from the polluted atmosphere.



## Yellow Teakwood Sandstone Elephant Animal Sculpture Set for Garden (2 pcs)

[Read More](#)

**SKU:** 01509

**Price:** ₹109,760.00 inc. GST

**Stock:** onbackorder

**Categories:** [Elephant Statue](#), [Animals & Birds Statues](#), [Garden Sculptures](#), [Hindu Statues](#), [Statues & Sculptures](#)

**Tags:** [Animal Statue for Garden](#), [Animal Statue for Home](#), [Elephant Idol](#), [Elephant Statue](#), [Elephant Statue for Home](#), [Elephant Statue for Outdoor Garden](#), [garden decor](#), [Garden Stone Statue](#), [home décor](#), [Outdoor Stone Statue](#), [Statue for Home](#), [Vastu Elephant Idol](#)

### Product Description

**This sandstone baby calf elephant is enough to put a smile on its viewer's face. A fantastic well-carved elephant pair of 2 ft sculpture made from teakwood sandstone is especially perfect for any outdoor garnishing. Material:** Teakwood Sandstone

**Dimension(HWL):** 24 x 12 x 24 in

**Height:** 2 ft **Position:** Standing **Few points about the adorable pair of elephants:**

- It is standing on a flat platform, made from the carving of a single stone.
- Artisanal elegance can be seen from the engraving over the surface of the gorgeous stone sculpture.
- When the trunk is directed in an upward direction, it symbolizes joy and delight, which bring fortune and success to life.
- Holding a garland in his trunk amplifies the ravishing.

### **The affiliation of the elephant with Hindu belief:**

- The elephant represents wisdom. So the holy creature is associated with Lord Ganesha, who always bestows their devotees with knowledge and fortune.
- The elephant also serves as the vehicle of Goddess Laxmi, that is why she was known as Gaja Laxmi. Gaja means elephant.
- The elephant is also the vehicle to Lord Indra, widely famous as "Airavat".

### **Essential tips to follow while placing the magnificent statue:**

- A set of elephant statues that has their trunk raised in the air should be placed in the main entrance, in such a way, that they face outward of your home, which will be beneficial to attract positivity and prosperity. Place them on both sides of the door.
- As elephants represent leadership, wisdom, and vigor, placing them at your office, workstation, and wear house, by facing it to the north will enhance professional growth, power and success.
- Give your fountain, swimming pool, or water body, an awe-inspiring panorama by placing the duo.
- It is a perfect choice to bedeck your garden, landscaping, and lawn.
- Planting it on the sidewalk of your park, zoo, or restaurant will be ritzy to the spectator.

### **Cleaning and maintaining tips for the outdoor stone sculpture :**

- Clean it with running water, or you can use a damp cloth to wipe down the surface of the statue on every alternative day to maintain the glaze.
-





## Lion Fighting Odisha Sand Stone Statue for Home

[Read More](#)

**SKU:** 01502

**Price:** ₹50,000.00 inc. GST

**Stock:** onbackorder

**Categories:** [Lion Statues](#), [Animals & Birds Statues](#), [Garden Sculptures](#), [Hindu Statues](#), [Statues & Sculptures](#)

**Tags:** [Animal Statue for Garden](#), [Animal Statue for Home](#), [garden decor](#), [Garden Stone Statue](#), [home décor](#), [Lion Sculpture](#), [Outdoor Stone Statue](#), [Statue for Home](#), [Stone Lion Fighting Statue](#), [stone lion idol](#), [stone lion statue](#)

### Product Description



CRAFTS ODISHA

## Rajasthani Red Stone Dolphin Statues for Outdoors Pool or Garden

[Read More](#)

**SKU:** 01501

**Price:** ₹72,800.00 inc. GST

**Stock:** onbackorder

**Categories:** [Animals & Birds Statues](#), [Garden Sculptures](#), [Hindu Statues](#), [Statues & Sculptures](#)

**Tags:** [Animal Statue for Garden](#), [Animal Statue for Home](#), [Dolphin Sculpture for Home](#), [Dolphin Statue for Garden](#), [Dolphin Statue for Swimming Pool](#), [Dolphin Stone Statue](#), [garden decor](#), [Garden Stone Statue](#), [home décor](#), [Outdoor Stone Statue](#), [Statue for Home](#), [Stone Bird Statue](#)

## Product Description

---



### Standing Lord Hanuman sandstone statue 38 inch

- This standing Hanuman murti is made of sandstone.
- Beautifully carved by stone carving artisans from Odisha
- Dimension (H x W x L) : 38 in x 16 in x 10 in
- This Sandstone statue can be used for both interior and outdoor decoration or puja.
- This Lord Hanuman sculpture will be packed in a wooden crate.

[Read More](#)

**SKU:** 00605

**Price:** ₹36,000.00 inc. GST

**Stock:** onbackorder

**Categories:** [Hanuman Statue](#), [Hindu Statues](#), [Statues & Sculptures](#)

**Tags:** [garden decor](#), [garden statue](#), [home décor](#), [New Arrivals](#), [outdoor statue](#), [red stone](#), [sandstone](#), [stone statue](#)

## Product Description

Lord Hanuman is the best example of pure devotion and love. He is said to be the greatest devotee of Lord Rama. He is an epitome of great strength, power, dedication, loyalty, and love. His selfless love for Lord Rama even turned him immortal for ages. This blissful statue of Lord Hanuman has his one hand raised to bless the mortal mass and other hand bearing the durable weapon Gadda. Bring this perfectly sculpted stone sculpture by the skilled artisans of Odisha. So grab this amazing statuette for your office or for gifting purpose from CRAFTS ODISHA at a very affordable price.

---





## Sandstone standing Lord Hanumaan statue 42 inch

[Read More](#)

**SKU:** 00604

**Price:** ₹45,000.00 inc. GST

**Stock:** onbackorder

**Categories:** [Hanuman Statue](#), [Hindu Statues](#), [Statues & Sculptures](#)

**Tags:** [garden decor](#), [garden statue](#), [home décor](#), [New Arrivals](#), [outdoor statue](#), [red stone](#), [sandstone](#), [stone statue](#)

### Product Description

Lord Hanuman is the best example of pure devotion and love. He is said to be the greatest devotee of Lord Rama. He is an epitome of great strength, power, dedication, loyalty, and love. The precision of the statuette and the skillful sculpting reminds us of the skill prevailing in Odisha. This blissful statue of Lord Hanuman has his one hand raised to bless the mortal mass and other hand bearing the durable weapon Gadda. So grab this amazing statuette for your office or for gifting purpose from crafts Odisha at a very affordable price.

---





## Sitting Lord Ganesha sandstone statue 12 inch

[Read More](#)

**SKU:** 00603

**Price:** ₹14,000.00 inc. GST

**Stock:** onbackorder

**Categories:** [Ganesha Statues](#), [Hindu Statues](#), [Statues & Sculptures](#)

**Tags:** [garden decor](#), [garden statue](#), [home décor](#), [New Arrivals](#), [outdoor statue](#), [red stone](#), [sandstone](#), [stone statue](#)

### Product Description

Lord Ganesha is the God of the beginning and is the eliminator of the evil. He is an epitome of knowledge and art. The Son of Lord Mahadev and Goddess Parvati, he is the persona of happiness, pleasantness, and love. Here Lord Ganesha is presented sitting on a lotus with his four arms bearing sweet, his broken tooth, passa, and ankusha. His trunk is facing towards the right making it really special, as it is believed to bear all the wishes of his devotees. So grab this masterpiece at a very affordable price from our site CRAFTS ODISHA.

---



## Lord Ganesha sitting posture sandstone statue 29 inch

[Read More](#)

**SKU:** 00602

**Price:** ₹30,000.00 inc. GST

**Stock:** onbackorder

**Categories:** [Ganesha Statues](#), [Hindu Statues](#), [Statues & Sculptures](#)

**Tags:** [garden decor](#), [garden statue](#), [home décor](#), [New Arrivals](#), [outdoor statue](#), [red stone](#), [sandstone](#), [stone statue](#)

### Product Description

Lord Ganesha sitting posture sandstone statue 2.5 ft, a beautiful idol of Lord Ganesha. Sitting in Lalitasana, in a relishing relaxed and tranquil state of mind. **Material:** Odisha Sandstone **Height:** 2.5 ft (approx.) **Dimension (HWL):** 29 x 18 x 9 inch **Placing:** Sitting Lord Ganesha has seen with his unique appearances. Lalitasana mudra is one of him famous posture where he seated on a large lotus, one leg folded and another on the ground. which portrays that a man from the earth is not entirely from the earth. His large head symbolizes intellect. His big ears define the importance of careful and active listening. His long trunk above the mouth depicts one should work more, talk less. His large belly is capable of assimilating all of the good and bad of the world and wrapping the serpent as a belt on his waist (representing the whole cosmos which he tied up with the kundalini energy of the serpent). The tiny eyes signify to focus on the goal with concentration. The *Ankusa* clears the barrier preceded to move forward. The noose use to apprehend the obstacle, the broken tusk is a symbol of his loyalty and devotion. The sweet bowl is a reward for the people moving on the right path. The mouse has depicts the human desire and ego which need to be controlled otherwise it will create devastation. Lord Ganesha god, is the boon granting deity. He vanquishes the fear and obstacle from his devotee's life. He is the knowledge of all, worshiping him one will attain wisdom and enlightenment. You will become a better person definitely by applying his lesson in your life. Lalitasana position is the best form of the Lord to keep at home or office to bring auspiciousness in life. **Placing:** By placing stone sculptures at your desire place, it generates a sense of awakening the soul. So right placement of the idol brings you auspicious results. The west, the

North, and the Northeast direction are best to keep at. The idol's face always should be to the north. And if you are placing him in the entrance make him facing inside. **Care:** Sandstone is a very durable material could stand any weather condition. Periodic dusting is enough with a broom or cloth (dry).



## Apsara welcoming in dancing pose sandstone statue 31 inch

[Read More](#)

**SKU:** 00601

**Price:** ₹30,000.00 inc. GST

**Stock:** onbackorder

**Categories:** [Apsara Sculpture Khajuraho](#) | [Angel Statue](#), [Hindu Statues](#), [Statues & Sculptures](#)

**Tags:** [garden decor](#), [garden statue](#), [home décor](#), [New Arrivals](#), [outdoor statue](#), [red stone](#), [sandstone](#), [stone statue](#)

### Product Description

A minimalistic look that fits well with a variety of interior and exterior themes. Welcoming in the dancing pose of Apsara 2.5 ft can leave a dramatic impact on its spectator. So hurry up to pack the elegant sandstone statue to create a greater visual impact on your guest. **Material:**

Sandstone / Khondalite Stone Statue **Height:** 2.5 ft (approx.) **Dimension(HWL):** 31 x 12 x 7 inch **Position:** Standing **A retro home decor statue of Apsara:**

- The beautiful statue standing over a lotus base, gesturing in traditional Indian greeting posture.
- The jewelry and clothes are carved on the sculpture delicately by the craftsman.
- Striking pose with a humble facial expression and visual communication.
- The elegant statue is made by the skilled artisans of Odisha, where stone carving is a major handicraft among others and earned fame globally, for its intricate design.

### Apsaras: The beauty with talent

- Apsara's are beautiful young women, they dance to the palace of Gods.



- Said to have emerged from the churning of the milk ocean.
- They are the lovers and wives of Gandharvas, living in the palace of Lord Indra. Serving as entertainers in the court of Lord Indra.
- Apsaras are proficient in dancing and singing skill.

### Suggestion for placement of the welcoming home decor statue:

- A pleasant piece of decor to be used in your interior designing of the home, hotel, restaurant palace to give the decor a more sophisticated look.
- You can place it at each side of the entrance of your home, restaurant, and marriage hall, etc. as a welcome greet to your guest.
- You can also add this elegant beauty to your garden area, backyard, park, and your landscaping design too.
- Wrap up this beautiful sculpt as a gift for your dear one.

### Some caring guides for the elegant home decor sculpture:

- The statue is made of Sandstone, which is a weather-resistant material.
- Sandstone is a very durable material and super low maintenance.
- For cleaning, simply dust the statue with a piece of cloth or broom.
- Dusting should be done periodically, so, dirt will not accumulate over the surface of the sculpt.



## Sand stone dancing welcome lady statue 30 inch

[Read More](#)

**SKU:** 00599

**Price:** ₹30,000.00 inc. GST

**Stock:** onbackorder

**Categories:** [Apsara Sculpture Khajuraho](#) | [Angel Statue](#), [Hindu Statues](#)

**Tags:** [garden decor](#), [garden statue](#), [home décor](#), [New Arrivals](#), [outdoor statue](#), [red stone](#), [sandstone](#), [stone statue](#)



## Product Description

Here the sand stone dancing welcome lady or apsara statue is presented greeting in graceful tribhanga form with peaceful facial expression. Apsaras are the beautiful maidens of the courtyard of Lord Indra. The definition of perfection and beauty, the persona of elegance and grace. The Apsaras are the wife of the Gandharvas and are seductive. This beautiful sand stone Apsara statue is meant for the beautification of the house and office. Decorate your house entrance with this mesmerizing sandstone statue. Buy this beautiful statuette exclusively available at Crafts Odisha.



## Sandstone dancing apsara playing dholak statue 36 inch

[Read More](#)

**SKU:** 00597

**Price:** ₹35,000.00 inc. GST

**Stock:** onbackorder

**Categories:** [Apsara Sculpture Khajuraho](#) | [Angel Statue](#), [Hindu Statues](#), [Statues & Sculptures](#)

**Tags:** [garden decor](#), [garden statue](#), [home décor](#), [New Arrivals](#), [outdoor statue](#), [red stone](#), [sandstone](#), [stone statue](#)

## Product Description

The sandstone dancing Apsara statue (3 ft) is a magnificent sculpture that is well-suited for even the most elegant outdoor decor. The Apsara holding Dholak looks majestic anywhere you put it. **Material:** Sandstone / Khondalite Stone **Dimension(HWL):** 36 x 14 x 9.5 inch **Height:** 3 ft (approx.) **Position:** Dancing

### Features of the fascinating outdoor stone statue :

- The above captivate statue of apsara is standing on a lotus pedestal and playing dholak.
- The stance and joyous expression are engraved in the sculpture brilliantly.

- The ornamentation is chiseled on her body so deeply that it is enhancing the charm of her womanly perfection beautifully.
- It is an intricate creation of the skillful craftsman of Odisha, globally famous for its stone carving.

### **Apsara: The beautiful and skillful artists**

- Apsaras have many roles in Hindu mythology and scriptures, like Rambha, Menaka, Urvashi, etc.
- They emerged from the churning of the milk ocean.
- Gandharvas are usually their lover and consorts, together they live in the palace of Lord Indra.
- Apsaras are excellent in the art of dancing and singing.

### **Suggestions and tips to place the outdoor stone statue:**

- Make use of it in your interior design of hotel, restaurant, palace.
- Placing it on each side of your entrance of the home, restaurant, marriage hall, the hotel will also be welcoming.
- Put the stone sculpture in your garden, park, and landscaping is aww-inspiring.
- You can also consider placing it in the outdoor stone statue beside the artificial water body, fountain, and swimming pool also be eye-catching.

### **Merits of placing the alluring outdoor stone statue of Apsara:**

- As per Vaastu, the east and Northeast zone distribute the zone of happiness and refreshment, so keeping it in the above zone will attract joy and happiness in your life.
- Artists associated with singing and dancing are recommended to keep the statue west and Southwest zone.
- Placing a statue facing outward at the entrance of your home attracts positive energy inside your home.
- It has so much soothing and positive energy to calm your soul and mind with a single glance at it.

### **Tips to follow for cleaning of the outdoor sandstone statue:**

- The seductive stone statue is made of Sandstone, the most durable material for outdoor beautification.
- The advantage of Sandstone is that it is shatterproof as well as weatherproof.
- Clean the statue using a piece of dry cloth and broom over the surface.

- The dusting should be done every other day so that dirt will not make compile over the surface of the outdoor stone statue.



## Standing Maa Saraswati sandstone statue 37 inch

[Read More](#)

**SKU:** 00596

**Price:** ₹36,000.00 inc. GST

**Stock:** onbackorder

**Categories:** [Saraswati Statues](#), [Statues & Sculptures](#), [Hindu Statues](#)

**Tags:** [garden decor](#), [garden statue](#), [home décor](#), [Ma Saraswati Stone Statue](#), [New Arrivals](#), [outdoor statue](#), [red stone](#), [sandstone](#), [Sandstone Stone Saraswati Statue Manufacture](#), [Saraswati Idol for Home Temple](#), [Saraswati Sculpture Manufacturer in India](#), [stone statue](#)

### Product Description

Another mesmerizing earthy-toned sculpture of CRAFTS ODISHA is "The 3 ft Standing Maa Saraswati Statue". Magnetically drawn everyone's eyes with its minimalist charm. **Material:** Sandstone Redstone **Height:** 3 ft (approx.) **Dimension(HWL):** 37 x 17 x 8.5 inch **Position:** Standing statue **The wonderful standing stone sculptures :**

- The lovely statue of Goddess Sarasvati standing over a two-layer lotus pedestal, along with a swan beneath her feet.
- The statue has been given a weathered finish by the artisans to make an illusion of an aged look.
- This beautiful sculpture is the creation of the skilled artificer of Odisha, where stone carving is worldwide famous for its intricate design.

**The epitome of art and science: Devi Saraswati**

- In Saraswati, Saras means "essence" and wati means "one who flows" which means she is the embodiment of the perennial flow of knowledge.
- She is the companion of "Lord Bramha".
- She disburses infinite sources of knowledge and understanding.
- "Saraswati Bandana" generally starts and ends in many Vedic sessions.
- "Vasant Panchami" is celebrated as her birthday in the month of Magha. Respecting the books and studies is the major aspect of that day.

**Placement ideas and direction for the stone sculptures:**

- Taking into consideration, the idol of Goddess should be placed in the West-Southwest zone, as the place denotes education.
- Using it in your temple of home and office will earn you auspicious results.
- You can use it in your institution, school, and college premises.
- You can gift your dear one the elegant present at their special event.

**Benefits of keeping the enchanting statue:**

- Goddess Saraswati blesses her devotee with the wealth of knowledge, wisdom, and compassion.
- Arts and science are important to attain both goals of one's life, so Goddess Sarasvati is favorable in all walks of life.
- She guides the souls of the deceased to find the "Moksha" afterlife.

**Tips to clean:**

- The statue is built from Sandstone material.
  - It is considered to be very durable and weather-resistant.
  - For cleaning of the statue using a piece of cloth or a small brush over the surface of the stone sculptures.
  - The cleaning should be followed time to time, to keep the dust at a bay.
-





## Sandstone Buddha head statue 2 ft

[Read More](#)

**SKU:** 00595

**Price:** ₹48,000.00 inc. GST

**Stock:** onbackorder

**Categories:** [Buddha Head Statues](#), [Buddha Statues](#), [Garden Buddha Statue](#), [Statues & Sculptures](#)

**Tags:** [garden decor](#), [garden statue](#), [home décor](#), [New Arrivals](#), [outdoor statue](#), [red stone](#), [sandstone](#), [stone statue](#)

### Product Description

Sandstone Buddha head statue 2 ft. A simple yet traditional alternative to Buddha's other posture. True artistry defines the distress statue delivers a stately appearance in the interior. Suitable to place on a mantle or sideboard either solo or with other figurines or lamps.

**Material:** Sandstone / Redstone **Height:** 2 ft (approx.) **Dimension(HWL):** 24 x 15 x 15 inch

**About the statement piece:** Lord Buddha has many dissimilar postures and gestures which speak of different characteristics of aspect. Unlike his head which remains the same in all his posture, and also carries his attributes. In many Buddhas, expression eyes were semi-closed which depicts his deep meditative state, along with an awakened mind which sees the inner as well as the outer world. The circular dot of his forehead represents the supernatural vision and the spiritual awakening. His elongated earlobes depict his ability to hear the sound of the world (suffering). His smile depicts his awakening of self despite the suffering and understanding of the universe. The bump, of his head, illustrates the wisdom and the supreme power of enlightenment. He is said to bring peace and harmony into life. Keeping a piece of Lord Buddha not only brings inner peace at home/office but also attracts positive energy in life. Because inner peace is a way of living a peaceful and healthy life both physically and mentally. **About Lord Buddha:** Siddharth Gautama was born in a royal family, as a prince by birth. He brought with him affluence and the life of Riley. Until the age of twenty-nine, he was married and had a son. He was oblivious and nescient about the real world of suffering. One day he gets to grips with the truth of what a common man face, sickness, old age, and death, which made him get the picture. Nor him neither anyone can escape from this pain, despite having wealth or power

everyone has to go through this. So he goes down the line to search for a way to free, from the universal suffering. Which took him six long years to achieve the path of awakening self or enlightenment. Which he share with his dispels and spent the rest of his life teaching the world about his findings and the path of achieving them. **Placement and use of the statue:** If your purpose is to grow in the academic sector then keep a Buddha head in the study room or kids bedroom facing east. Apart from the spiritual significance, it uses as a beautiful décor statement. Sat him in the foyer or sideboard in your corridor, or living room. You can place it alone or with a few other figurines, or between two lamps or botanical vases. If you have a tiny balcony garden then place him among the flower pots, it will amplify the décor. **Care:** Dusting can be done using a cloth or broom periodically on the surface of the statue.

---