



## Sandstone Animal Horse Statue Set for Vastu Home and Garden Decor

[Read More](#)

**SKU:** 01515

**Price:** Call for price

**Stock:** instock

**Categories:** [Animals & Birds Statues](#), [Garden Sculptures](#), [Hindu Statues](#), [Statues & Sculptures](#)

**Tags:** [Animal Statue for Garden](#), [Animal Statue for Home](#), [Ashwa Murti](#), [garden decor](#), [Garden Stone Statue](#), [Godha Murti](#), [home décor](#), [Horse Idol](#), [Horse Sculpture](#), [Horse Sculpture for Outdoor](#), [Horse Statue for Garden](#), [Horse Statue for Home](#), [Outdoor Stone Statue](#), [Statue for Home](#), [Stone Statue Manufacturer](#)

### Product Description

The sculptural option of horse statue will help you to set the focal point of your home and garden. This horse duo combines beauty with sustainability in one streamline. Over 1.5 ft rustic animal statue has endless potential application.

**Material:** Sandstone Redstone **Dimension(HWL):** 18 x 24 x 9 inch **Height:** 1.5 ft **Width:** 2 ft

**Position:** Standing **About the subtle rustic flair statue:**

- The statue of the horse is standing on a pedestal, with hand-engraved on the sandstone.
- Stone carving is the age-old craft of Odisha.
- Sandstones are weatherproof. That's why you may find them in many temples, monuments, and other exterior works.
- The skillful artists use the stone to engrave with many artisanal majestic on the stone.
- The figures of elephants, lions, and horses are a common sight at temple entrances.

**The horse statue has a remarkable role in Hindu mythology :**

- According to Hindu mythology, horses are symbols of loyalty, stamina, and respect.

- The horse is the chariot of Lord Surya(sun).
- The first horse has emerged from the churning of the ocean of milk(Samudra Manthan), it was known by the name of Uchchaihshravas.
- The Ashwamedha Yagya was performed by Lord Shri Ram. He holds the sacrificial ritual of the horse after being positioned as the ruler of Ayodhya.

### Disposal and benefits of the arresting horse statue:

- Concerning Vaastu, the horse statues should always be kept in the southern direction, beneficial for fame, career, and prosperity.
- The pair is beneficial for business settings, offices, and other areas where you want to grow your wealth and success.
- Use it in your park, garden, lawn using many more pairs as the area required in landscaping, the front yard of your home, office, apartment, and restaurant.
- Horses are used at the entrance of temples, specifically, of female Goddesses.

### Safekeeping and cleaning instruction:

- Sandstones are weatherproof and best to be used in outdoor ornamentation. So, cleaning should be done every second day. So dust wouldn't accumulate on the surface of the outdoor statue.
- Using a broom or dry cloth for dusting is enough for the Outdoor Stone Statue.



CRAFTS ODISHA

## Sand Stone Statue for T

[Read More](#)

**SKU:** 01513

**Price:** Call for price

**Stock:** instock

**Categories:** [Garden](#)

**Tags:** [Animal Statue](#)

[Home](#), [garden deco](#)

[décor](#), [Nandi Bull St](#)

[Nandi Statue for Pu](#)

[Statue](#), [Shiv Baha](#)

[Statue for Home](#), [St](#)

[Manufacturer](#)

## Product Description

---



## Middle Trunk Sitting Ganesh Statue in Sand Stone for Home 1 ft

[Read More](#)

**SKU:** 01359

**Price:** ₹14,000.00 inc. GST

**Stock:** instock

**Categories:** [Ganesha Statues](#), [Hindu Statues](#)

**Tags:** [ganesh murti](#), [Ganesha Moorti Idol](#), [Ganesha Sculpture](#), [Ganesha Statue for Home](#), [Ganesha Statue for Temple](#), [Ganesha Statue Manufacture](#), [Shushamna Ganesha Idol](#), [Stone Statue Manufacturer](#)

## Product Description

---





## Sand Stone Ganesh Statue For Home Entrance 12 inch

[Read More](#)

**SKU:** 01357

**Price:** ₹14,000.00 inc. GST

**Stock:** instock

**Categories:** [Ganesha Statues](#), [Hindu Statues](#)

**Tags:** [Bighna Vinashak Idol](#), [Ganapati Idol](#), [ganesha murti](#), [Ganesha Statue for Home](#), [Ganesha Statue for Temple](#), [Parvati Nandan Ganesha Moorti](#), [Stone Statue Manufacturer](#)

### Product Description

**The Ganesha statue for the home entrance always is one-of-a-kind. The simple design creates an eye-catching focal point in your decor.**

**Material:** Sandstone / Red stone **Dimension(HWL):** 12 x 7 x 4 inch **Position:** Sitting **Height:** 1 ft

#### Characteristics of the Ganesha decor Murti :

- The statue depicts the elephant-headed god "Lord Ganpati".
- Sitting in Lalitasana on a lotus plinth, holding his broken tusk in his right hand, sweetmeats, a battle-ax, and a noose in his other hands.
- A weather effect sculpture crafted enough to lure the onlooker from the house of CRAFTS ODISHA.

#### The importance of the Lord Ganpati statue:

- Ganesha is Lord Shiva, and Devi Goddess Parvati's son, widely worshipped under names like Sumukha, Ekadanta, Bhalchandra and Gajanana, and many more.
- Gana means group, Isha means chief, hence he is the chief of a group of helpers of Lord Shiva.
- Lord Ganesha is Achintya – beyond thought, Avyakta – beyond expression, Ananta – eternal, or beyond time.

- Devotees beseech Lord Ganesha for removing barriers of all kinds, new and happy beginnings, and good fortune.
- Ganesh Chaturthi falls on the fourth day of the waxing moon period (Shukla Chaturthi) in the Hindu lunar month of Bhadrapad.

### **A display and put on view for the Ganpati statue:**

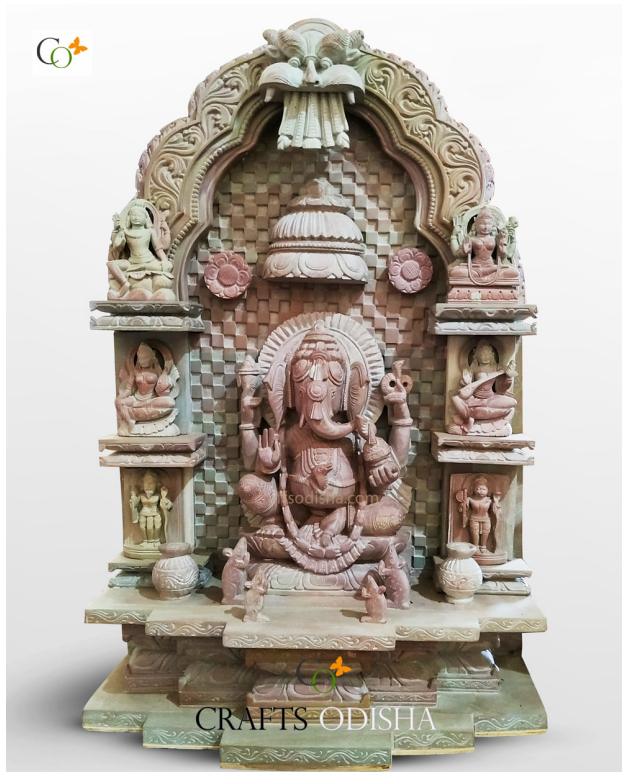
- Make a great first impression by placing the statue in the entryway or foyer over a console or iron pedestal that adds a pretty touch.
- Think of lovely tabletop ornamentation, in your home or office to make your house feel homey and look beautiful.
- Placing on fancy angular or on a ladder shelf is a fantastic idea for anyone considering simple addition to his home.
- It is a great decorative element to your built-in wall that brightens your moon, even on the most dismal days.
- Adding a display unit to your home will make it look more spacious and open. Also, you get a fancy space for a neutral that needs to be paired with other figurines.
- Placing it on a floating or hanging shelf is an imitation of more imaginative treatments in the living room, patio, restaurant, etc.
- What can be more fascinating than giving this art piece to your friends and family at their festive and special events!

### **Boons of Ganesha decor:**

- Lord Ganesha removes all obstacles and hurdles from the devotees' lives.
- Elevates happiness, health, and wealth, and brings you children and salvation.
- Yields material and spiritual prosperity.

### **Cleaning Hacks for the Ganesha decor:**

- The Ganesha decorative statue for the home requires a basic cleaning.
  - To buff, the sculpture uses a small paint brush or cloth to wipe the surface of the statue. Clean it every so often to upkeep its looks and shine.
-



## Soapstone Khanja Work Decorative Vastu Ganesha Statue for Home

[Read More](#)

**SKU:** 01550

**Price:** ₹75,000.00 inc. GST

**Stock:** onbackorder

**Categories:** [Ganesha Statues](#), [Statues & Sculptures](#), [Garden Sculptures](#), [Hindu Statues](#)

**Tags:** [Craft Decoration for Home](#), [Ganesha Decor](#), [Ganesha Decorative Statue for Home](#), [Ganesha God Statue](#), [Ganesha Home Statue Decor](#), [Ganesha Idol at Home](#), [Ganesha Idol Online](#), [Ganesha Stone Sculptures](#), [Hindu God and Goddesses](#), [Pink Stone Soap Stone Statue Manufacturer](#), [Soap Stone Statue For Home](#), [Soapstone Carving](#), [Stone Statue for Temple](#), [Stone Statue Manufacturer](#)

### Product Description

**A delightfully luxury finished and a nod to its noble simplicity Khanja work decorative Vastu Ganesha statue for home, overflowing with personality. Material:** Soapstone / Pinkstone **Dimension(HWL):** 18 x 12 x 8 inch **Position:** Standing **Height:** 1.5 ft **explanation of the home garden statue:**

- It's a statue of Lord Ganesha the "Vighnaharta."
- In this statue, he is seen in Lalitasana over a lotus base on Mandapa under Torana, accompanied by his mount mouse beneath his feet, looking at his master with folded hands and docile eyes.
- In this form, he is seen with four arms where he is holding a goad, A broken tusk, sweetmeats, and a noose.

**Ganesha: The mangal murti**

- "Gana" stands for common people, and "Isha" means leader so "Ganesha" means the leader of common people.
- Lord Ganesha was worshipped before the beginning of any new venture, for this, he is popularly known as the god of beginning.
- He rides a mouse as his Vahana which is an Indian Bendi coot rat.
- He has an elephant head on a human body. The head represents the intellect.
- His birthday falls on the month of Bhadrava Shukla paksha Chaturthi known as Ganesh / Vinayak Chaturthi.

### **Beautiful ideas for your outdoor embellishment:**

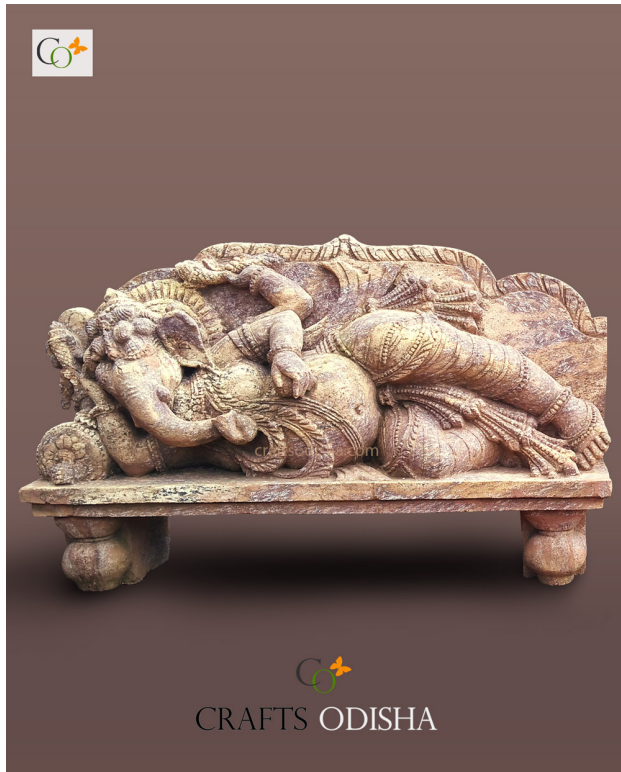
- Decorate it in your office, temple, or home prayer room.
- Display the sculpture in the nooks of your living room over an iron pedestal where every guest would see and appreciate your choice.
- This piece will grab the eye anywhere you placed it. So the entryway of the home/hotel/restaurant or office is an inviting idea to display the idol.
- Make it a talking point by exhibiting on the patio so that every time you went out of your home can get the blessing from the Vighnaharta.
- The lobby of the restaurant / hotel / resort is an inviting place where foot traffic is higher than normal.

### **The boons and benefits of Vaastu Ganesha stone sculptures:**

- You will earn wisdom and intelligence from the epitome of knowledge "Lord Ganesha".
- His blessing is enough to lead a wealthy and prosperous life.
- He is known as **Mangal Murti**, the God of Good fortune and wealth so the worshipper gets an abundance of wealth & power.

### **How to clean your home garden statue:**

- Soapstone is a non-porous martial that does not need regular cleaning so it's easy to maintain. For cleaning, you can go for a simple cleaning method once or twice a year.
  - Khanja work structure has many nooks and crevices in which dust is easily gathered, so clean them off using a paintbrush to reach those intricate areas.
  - Instead of a brush, you can also opt for a vacuum cleaner in sucking mode to suck out the dust from the surface.
-



## Sandstone Peacefully Resting Ganesha on Bed Decorative Statue for Home

[Read More](#)

**SKU:** 01549

**Price:** ₹27,000.00 inc. GST

**Stock:** onbackorder

**Categories:** [Ganesha Statues](#), [Garden Sculptures](#), [Hindu Statues](#), [Statues & Sculptures](#)

**Tags:** [Big Ganesha Statue for Home and Garden](#), [Craft Decoration for Home](#), [Ganesha Decor](#), [Ganesha Decorative Statue for Home](#), [Ganesha Garden Statue](#), [Ganesha God Statue](#), [Ganesha Home Statue Decor](#), [Ganesha Idol at Home](#), [Ganesha Idol Online](#), [Ganesha Statue Decor for Garden](#), [Ganesha Stone Sculptures](#), [Ganesha Stone Statue for Outdoor](#), [Hindu God and Goddesses](#), [New Style Ganesh Murti](#), [Outdoor Stone Statue](#), [Sand Stone Ganesha Statue](#), [Sandstone Ganapati Statue](#), [Stone Statue for Temple](#), [Stone Statue Manufacturer](#)

### Product Description

The patron of fortune and generosity idol resting on a bed bending one leg upon another. A resting-state where he is laying on a platform with a pillow under his head. This symbolizes the sovereignty and sanctity of the posture of lord Ganesha.

**Material:** Sandstone / Red stone **Dimension(HWL):** 15 x 24 x 10 inch **Height:** 15 inch (approx.) **Width:** 2 ft (approx.) **Statue position:** Resting

The lord's birth itself an interesting story to be folded, from a guardian of the door to the most important deity to get worshiped before commencing any holy ritual, to overcome an obstacle to bestow wealth, knowledge, and prosperousness. The God of onset. Holding a laddoo in his hand he pursues the sweetness of life and self-enjoyment. His jumbo belly represents chymify all good and bad things of the world. The rosary in his hand's tributes wisdom and knowledge, whereas the hatchet is known as pasam illusion of evil thoughts, and provides awareness. Shri Ganapati is one, who throws away negative energies and welcomes joy, well-being, enchantment in your life. From home to business or official his worshiped and admired by all.



people of age. People who search for harmony and success should consider bringing this amazing statue and spread positivity in the surrounding. **Placement:** Few things need to be kept in mind while placing the idol as the direction should be east, northeast, north. Again this Ganesha stone sculpture's calm pose is perfect both for indoor and outdoor kickshaw. This sedimentary rock looks perfectly adorn the lawn, swimming pool, garden, near the fountain, outdoor banquet. **Sandstone:** This tan color marvelously carved Ganesha stone sculptures by artisans gives a natural vibe to the idol. As it is carved for outdoor purposes too so the stone has durability in many folds. In Odisha, sandstone variety is used by many craftsmen and stone statue manufacturers for carving stone sculptures. **HOW to care:** Gently wipe with a soft towel or hand broom to avert dirt build-up. Do not bleach or acids the stone. *Elevate your decor with this royal piece of carving, and captivate the viewer with a pleasant look. Showcase your elegant taste with this stunning composed piece of divine sculpture in your home or outdoor area.*

---



## Sanding Vastu 4.5 ft Ganesha Statue with Toran Frame for Home and Garden

[Read More](#)

**SKU:** 01548

**Price:** ₹155,000.00 inc. GST

**Stock:** onbackorder

**Categories:** [Ganesha Statues](#), [Garden Sculptures](#), [Hindu Statues](#), [Statues & Sculptures](#)

**Tags:** [Big Ganesha Statue for Home and Garden](#), [Craft Decoration for Home](#), [Ganesha Decor](#), [Ganesha Decorative Statue for Home](#), [Ganesha Garden Statue](#), [Ganesha God Statue](#), [Ganesha Home Statue Decor](#), [Ganesha Idol at Home](#), [Ganesha Idol Online](#), [Ganesha Statue Decor for Garden](#), [Ganesha Stone Sculptures](#), [Ganesha Stone Statue for Outdoor](#), [Hindu God and Goddessess](#), [New Style Ganesh Murti](#), [Outdoor Stone Statue](#), [Sand Stone Ganesha Statue](#), [Sandstone Ganpati Statue](#), [Stone Statue for Temple](#), [Stone Statue Manufacturer](#)

## Product Description

This Redstone Ganesh murti in Standing under a toran frame on a platform. "**Ek daanta chaturbhuja**" this mudra is widely known for its broken tusk. In this form, his belly is quite ample. He is holding an ax, modak, beads, and the broken tusk. The toran has beautifully handcrafted with the heads of an elephant, peacock, a male, and female lion along with his vahana the bandicoot rat, the largest rat of Asia.

**Material:** sandstone/red stone **Dimension(HWL):** 52 x 26 x 20 inch **Height:** 4.5 ft (approx.)

**Statue position:** Standing

Every posture or mudra has some unique classification of his characteristic and symbolizes his godhood. Like other deities, Ganpati Ji also holds many objects which has some important symbol to the common people, like in this of his mudra in one hand he is holding broken tusk, in the instruction of sage Vyasa Kabi transcribe Mahabharata while writing those poems his feather pen broke, to transcription could proceed without interruption, he broke up his tusk. The broken tusk symbolizes equality and distinctive character. In another hand holding "beads" Japa mudra, an axe symbolizes cutting the bond of disregard. And finally, a hand full of modak looks like a coconut shape sweet symbolizes meditation, a simple form of getting *anand* so modak represents *anand* of spiritual life. Serpent around the waist, which depicts the cosmic energy in all forms. To overcome distressing energies, or encountering obstacles in one's life, career, business, personal and professional life this Ganesha stone sculpture is beneficial to sweep away all hardship. Uprooting all evil eye and conserving peace and prosperity of the devotee. This exquisitely designed and complex crafted Ganesha god statue is the artistic touch of brilliance artisans makes perfect furnishing the decoration in a spiritual way.

**Placement suggestion:** Whenever we plan to place a deity north Kona or esanya Kona is best for Hindu gods and goddesses, and this idol is specifically designed to be placed both for indoor and outdoor designing. You can place it on the lawn, garden, park, restaurants, the entrance of any premises.

**Care:** Sandstone is a stone that doesn't need much care or maintenance. simply wipe with a broom or a cloth is enough for maintenance. *Make a big difference in your decoration, and amaze the viewer with the impressive carved statue more durable and lasting.*

---



## Beautiful Sitting Ganesha Made of Sandstone Home Statue Decor

[Read More](#)

**SKU:** 01547

**Price:** ₹120,000.00 inc. GST

**Stock:** onbackorder

**Categories:** [Ganesha Statues](#), [Garden Sculptures](#), [Hindu Statues](#), [Statues & Sculptures](#)

**Tags:** [Big Ganesha Statue for Home and Garden](#), [Craft Decoration for Home](#), [Ganesha Decor](#), [Ganesha Decorative Statue for Home](#), [Ganesha Garden Statue](#), [Ganesha God Statue](#), [Ganesha Home Statue Decor](#), [Ganesha Idol at Home](#), [Ganesha Idol Online](#), [Ganesha Statue Decor for Garden](#), [Ganesha Stone Sculptures](#), [Ganesha Stone Statue for Outdoor](#), [Hindu God and Goddesses](#), [Outdoor Stone Statue](#), [Sand Stone Ganesha Statue](#), [Sandstone Ganapati Statue](#), [Stone Statue for Temple](#), [Stone Statue Manufacturer](#)

### Product Description

The sitting Sandstone Ganapati statue is a masterpiece of art magnificently carved and design enough to transmit his divine power to one's soul. He is supreme at bringing wealth and power into your life and eradicating hardship in both your personal and professional life.

**Material:** Sandstone / Khondalite stone **Height:** 4 ft **Dimension (HWL) :** 48 x 36 x 18 inch

**Statue positioning:** Sitting

When there is a competition between lord Kartikeya and Ganpati to be bestowed with the fruit of knowledge by his parents upon a condition where both of them have to circle around the earth three times, while lord Kartikeya circling around earth Ganpati circled around Lord Shiva and Goddess Parvati is known to be his idea of the world and won the race. And blessed to be the lord of knowledge and wisdom thereafter. In his six arms each of holding on to some objects, are lessons to common men. In one hand holding an elephant goad or ankus and a noose known as pasha, both collide and push away obstacles. holding beads of Japa mala, focus his calm attitude, the broken tusk is a symbol of sacrifice. Axe derivate all desires sufferings and pain and a pot full of sweets illustrate the reward of judicious life. And the serpent around



his waist symbol of the whole cosmic energy controlled by him. Lord Ganpati erases trouble and distress and brings happiness to one's life. Everyone wants success and a prosperous life with good fortune and knowledge. Lord Ganpati is known for wisdom so one will be blessed with enlightenment in life by worshipping him. Bringing Ganpati Ji into your space, life becomes harmonious peaceful, both personally and professionally. **Placement suggestion:** It is good to place the Ganesha stone sculptures on the main entrance gate of the house or office inside and outside for a good omen. The idol should be seated in the North East, North, or East direction. There are several areas where this idol can be furbished like, in school, park, garden, restaurant, etc. **Care:** Sandstone statues are great material as they require very little maintenance. Simply brush up or wipe it with a dry cloth or towel. You can spray water and bathe to too clean up.

*The durable quality and rock finish make the well-carved statue turn heads both with devotion and for its tempting look.*

## Sandstone Standing Ganesha With Toran Frame Statue Decor for Garden

[Read More](#)

**SKU:** 01546

**Price:** ₹185,000.00 inc. GST

**Stock:** onbackorder

**Categories:** [Ganesha Statues](#), [Garden Sculptures](#), [Hindu Statues](#), [Statues & Sculptures](#)

**Tags:** [Big Ganesha Statue for Home and Garden](#), [Craft Decoration for Home](#), [Ganesha Decor](#), [Ganesha Decorative Statue for Home](#), [Ganesha Garden Statue](#), [Ganesha God Statue](#), [Ganesha Home Statue Decor](#), [Ganesha Idol at Home](#), [Ganesha Idol Online](#), [Ganesha Statue Decor for Garden](#), [Ganesha Stone Sculptures](#), [Ganesha Stone Statue for Outdoor](#), [Hindu God and Goddessess](#), [New Style Ganesh Murti](#), [Outdoor Stone Statue](#), [Sand Stone Ganesha Statue](#), [Sandstone Ganpati Statue](#), [Stone Statue for Temple](#), [Stone Statue Manufacturer](#)





## Product Description

Sandstone Standing Ganesha With Toran Frame 5 ft Statue Décor for Garden is a worthy addition to your outdoor décor. The beautiful frame architecture reflects the brilliance of craftsmanship at its best. Stone carving age-old craft of Odisha kept the sculptural tradition alive through their unique stone carving. **Material:** Sandstone / Redstone Statue **Dimension (HWL):** 60 x 30 x 24 inch **Height:** 5 ft (approx.) **Position:** Standing The Outdoor Stone Statue is in a standing form symbolizes stringency and optimism, with varied attributes in his arms. A broken tusk, sweetmeats, prayer beads, and an axe. Axe is the symbol of the curtailment of pain and suffering of the devotee. The broken tusk illustrates how the lord is dedicated to his duty and can sacrifice himself for the service of others, the prayer bead is a symbol of constant learning, whereas the bowl of sweet is a reward for self-enlightenment of pursuing the righteous path. Ganesha God, always seen with a mouse, this mammal carry all human attributes like desires and pride, we all carry. The mousses beneath the god teach us we need to control this otherwise it will end up destroying us. All human has a mouth above their hands, while lord Ganesha has a trunk above his mouth. Our speech seems to take supersede our action, but lord Ganesha's action outweigh talk, the lesson for all "talk less- work more". Considered to be the remover of all obstacles and negativity, the idol is often kept by his devotees to protect themselves from evil energies. We bow for his blessing in all aspects of life. Again considered as a décor element the earthy look makes the Ganesha garden sculpture more pleasant. One of the best Ganesha stone sculptures for garden decoration, fountain decoration, swimming pool decoration, landscaping design, interior designing, outdoor or home decoration, this Statue can be used in temple or puja. **Placing:** To welcome divine energies into your space then northeast is the best direction. East or west is also a preferable choice for the placement of the sandstone Ganesha statue. **Care:** As it is an outdoor statue so it can stand any weather, you can bathe, or clean it with fiber cloth to keep the stone sculpture dirt-free. ***"A sculpture that goes any type of outdoor décor, spruce up your space."***

---



## Sand Stone Big Dancing Ganesha on Snake God Indian Statue

[Read More](#)

**SKU:** 01545

**Price:** ₹150,000.00 inc. GST

**Stock:** onbackorder

**Categories:** [Ganesha Statues](#), [Garden Sculptures](#), [Hindu Statues](#), [Statues & Sculptures](#)

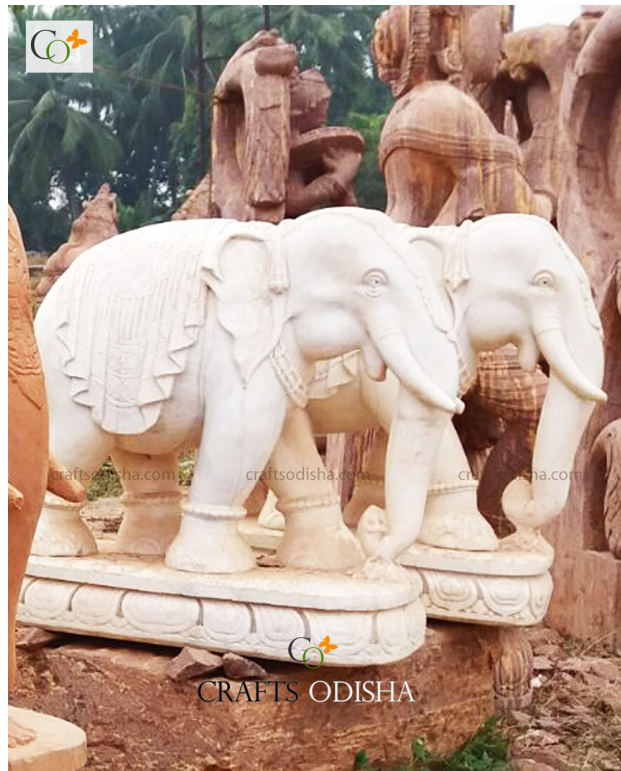
**Tags:** [Big Ganesha Statue for Home and Garden](#), [Craft Decoration for Home](#), [Ganesha Decor](#), [Ganesha Decorative Statue for Home](#), [Ganesha Garden Statue](#), [Ganesha God Statue](#), [Ganesha Home Statue Decor](#), [Ganesha Idol at Home](#), [Ganesha Idol Online](#), [Ganesha Statue Decor for Garden](#), [Ganesha Stone Sculptures](#), [Ganesha Stone Statue for Outdoor](#), [Hindu God and Goddesses](#), [Outdoor Stone Statue](#), [Sand Stone Ganesha Statue](#), [Sandstone Ganapati Statue](#), [Stone Statue for Temple](#), [Stone Statue Manufacturer](#)

### Product Description

This alluring Sandstone Ganapati Statue, dancing on a serpent and stretching a snake over his head depicts Lord Ganesha in the rarest form. This impressive carved statue has six hands along with featuring an elephant head and a rounded belly while the mouse is also present near his feet, symbolizing his power to overcome obstacles and wrapped a serpent on his waist to keep the sweets from spill out. **Material:** Sandstone **Dimension(HWL):** 60 x 30 x 20 inch **Height:** 5 ft **Statue position:** Dancing Often Ganesha is shown sitting or standing, here he is dancing, which shows his joyous side. The dancing form is associated with Dhan Lakshmi. In his four hands he is holding an elephant goad, symbol of how one can control the situation of illiteracy and virtual reality, prayer beads symbolize concentration on life and knowledge should continuously hunt for, the axe represents cut off all obstruction of the devotee, and the laddoo attributes salvation. The belly of Lord Ganesha represents the whole cosmos, which he holding back with a snake around the waist. The Asian bandicoot rat his vahana also symbolizes uncontrolled desires and ego that need to be controlled. The way lord Ganesha controls the rat, we must also learn to control our desires and ego. The “Ga” in Ganesha means “knowledge”,

“na” means “salvation” and “isha” means “lord”. Lord Ganesha had two wives, named Riddhi who represents prosperity, and Siddhi who represents enlightenment. Has two sons namely Subha and Labha.

Dancing Ganesha is a happy and kind-hearted aspect of the Lord Ganpati out of his 32 forms. This form of Lord Ganesha is believed to bestow the devotees with an aptitude for learning fine arts, proficiency, success, and fame in their field whoever desires for self-growth, then dancing Ganesha is best to pick. Ganesha focuses on your inner strength and develops patience which will definitely help you to become a better human being. He removes negativity and purifies the soul you will become more peaceful and stress-free in your life. **Placing:** Placing Hindu gods and goddesses in the right spot at home or outdoor is important. To gets the fruitfulness of the deity. North and northeast directions are perfect to place the idol. Try to make Ganpati murti is facing the main entrance/exit of the home or office. (It is considered to be good for those people who are associated with creative work). Although Ganesha in any posture is auspicious for people seeking his blessing. Apart from this, you can place the finely crafted statue in garden decoration, fountain decoration, swimming pool decoration, landscaping design, interior designing, outdoor or home decoration, This Statue can be used in temples also. **Care:** You can clean the statue with water. Wipe or dust with a cloth or broom to get rid of compiles of dirt. *Amaze your guest with this unique sculpture and obtain applaud for your remarkable piece of choice.*



## Marble Large Set for Home

[Read More](#)

**SKU:** 01517

**Price:** ₹588,000.00

**Stock:** onbackorder

**Categories:** [Elephant](#), [Garden Sculptures](#), [Sculptures](#)

**Tags:** [Animal Statue](#), [Home](#), [Elephant Idol](#), [for Home](#), [Elephant](#), [Elephant Statue](#), [Marble](#), [Stone Statue](#), [home](#), [Outdoor Stone Statue](#)

[for Home](#), [Stone Statue for Temple](#), [Stone Statue Manufacturer](#), [Vastu Elephant Idol](#)

## Product Description

**The sublime white stone elephant pair of success is one of those gorgeous pieces of décor from the magnificent artisans of Odisha, that everyone will grasp of the chance for owning it. The large elephant statue which is made from marble is not only very tony but also serves importance in the context of Vaastu and Fengshui.**

**Material:** Marble stone statue **Dimension(HWL):** 36 x 18 x 36 inch **Position:** Standing

**Height:** 3 ft **About the elegant statue:**

- The architectural design of the large elephant standing on the lotus pedestal will not only grab your attention for its mesmerizing look but also brings beauty and serenity into your life.
- The craft made on the white marble finish has something for everyone, who adores architecture.
- Elephant trunks have their own significance in their position. When the trunk is in the upward direction, it is considered good luck and fortune to the family. When the trunk is positioned downward direction, it represents the ability to solve challenges and longevity.
- White elephants are symbolism of richness, luxury, and wealth.

## Guidance for placement and use :

- If you have a wide entrance at your home, palace, or mansion, then place the duo in such a way that they face outward for bringing positive results.
- Elephants are symbols of wisdom. When the truck of the elephant is positioned downward it is, favorable for the office and warehouse. So placing them, in the office, home, a workstation will boost your career, job, and leadership quality. It is also helpful to overcome various tasks and obstacles.
- The marble outdoor stone statue is felicitous in the park, landscape designing, zoo.
- Decorate your garden with a beautiful pair of elephants.
- You can place them on both sides near the pool or fountain which will make you go aww.

## The religious significance of the Elephant stone sculptures:

- The elephant is the riding vehicle of Lord Indra.
- The white elephant is the riding vehicle of Goddess Laxmi.
- The elephant is also associated with the Ganesha statue.



- In Buddhism also, the elephant signifies our passionate and uncontrolled mind which can be disciplined through meditation.

### How to clean and care :

- To keep the glossy white gaze shining, wipe it with a dry cloth or damp the cloth in the water and wipe it down on the surface. As it purpose of outdoor placement, cleaning should be done daily basis so that dust won't be gathered on the surface from the polluted atmosphere.



## Natural Sand Stone Valampuri Ganesha Statue 12 inch

[Read More](#)

**SKU:** 01362

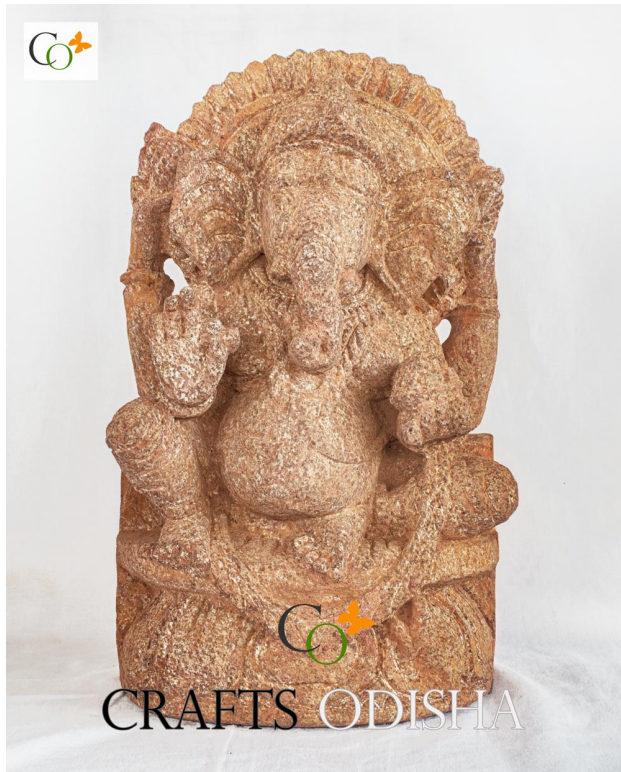
**Price:** ₹13,500.00 inc. GST

**Stock:** outofstock

**Categories:** [Ganesha Statues](#), [Hindu Statues](#)

**Tags:** [Ganesha Statue for Temple](#), [Ganesha Statue Manufacture](#), [Siddhi Ganesha Statue](#), [Siddhi Vinayak Temple](#), [statue for home decor](#), [Stone Statue Manufacturer](#)

### Product Description



## Natural Sand Stone 1 Feet Middle Trunk Sushumna Ganesha Murti

[Read More](#)

**SKU:** 01361

**Price:** ₹13,500.00 inc. GST

**Stock:** outofstock

**Categories:** [Ganesha Statues](#), [Hindu Statues](#)

**Tags:** [ganesha sculpture](#), [Ganesha Statue for Home](#), [Ganesha Statue Manufacture](#), [gifting](#), [gifting statue](#), [home décor](#), [Shushamna Ganesha Idol](#), [statue for home decor](#), [Stone Statue Manufacturer](#)

### Product Description



## Sand Stone God Indian Entrance ar

[Read More](#)

**SKU:** 01551

**Price:** ₹100,000.00

**Stock:** outofstock

**Categories:** [Garuda](#), [Hindu Statues](#), [Statue](#)

**Tags:** [Craft Decor](#), [Garuda murti](#), [garuda](#), [Temple](#), [Garuda Sta](#), [Moorti](#), [Garuda Stor](#), [Garuda Stone Statu](#), [and Goddessess](#), [O](#), [Garuda Statue](#), [Stor](#)

## Product Description

How about a blissful setting with the 4 ft Garuda God Indian statue in your outdoor space. Make a rugged appearance in minimalistic décor with the attractive accent piece from CRAFTS ODISHA. **Material:** Sandstone Redstone **Height:** 4 ft (approx.) **Dimension(HWL):** 48 x 36 x 15 inch **Position:** Kneeling **About the sacred statue:**

- The statue is seen kneeling with the right leg vertically folded but the knee is raised while the leg is folded and placed horizontally on a lotus pedestal.
- He is a mix of the human body, limbs, head, and wings, talons, beaks of an eagle.
- His hands are folded in Anjali Mudra, with wings.
- The splendid graven image is created by the artificer of Odisha, where stone carving is globally famous for its intricate design.

## The embodiment of strength: Garuda

- He is the Vahana of Lord Vishnu.
- Widely known as the king of all birds and enemy of snakes.
- You won't find any Dhawaja of Lord Vishnu without Garuda.

## Direction and placement ideas:

- The statue should be kept in the southwest zone while facing him to the Northeast.
- Use the divine statue in the temple for Puja.
- You can put each side of any Wishnu temple.
- You can use it in garden decoration, fountain decoration, swimming pool decoration, landscaping design, and interior designing, etc.
- Gift your boss a statue of Garuda and he will not delay your promotion anymore.

## Benefits of keeping the stone sculptures:

- It can do wonders in enhancing one's ability and creativity.
- Also helps to excel in the respective field of work.
- Betterment of life and take a swift turn towards success.

## Wash and care guide for the stone sculptures:

- The artistic sculpture is made from Sandstone.
- Its main advantage is its weather-proof quality and durability.



- For cleaning, you can either bathe the statue or wipe it with a piece of cloth.
- Clean it time to time, to keep the dirt away from the stone sculptures.



## Sandstone Panchamukhi Big Ganesha God Statue for Garden

[Read More](#)

**SKU:** 01544

**Price:** ₹150,000.00 inc. GST

**Stock:** outofstock

**Categories:** [Ganesha Statues](#), [Garden Sculptures](#), [Hindu Statues](#), [Statues & Sculptures](#)

**Tags:** [Big Ganesha Statue for Home and Garden](#), [Craft Decoration for Home](#), [Ganesha Decor](#), [Ganesha Decorative Statue for Home](#), [Ganesha Garden Statue](#), [Ganesha God Statue](#), [Ganesha Home Statue Decor](#), [Ganesha Idol at Home](#), [Ganesha Idol Online](#), [Ganesha Statue Decor for Garden](#), [Ganesha Stone Sculptures](#), [Ganesha Stone Statue for Outdoor](#), [Hindu God and Goddesses](#), [Outdoor Stone Statue](#), [Sand Stone Ganesha Statue](#), [Sandstone Ganpati Statue](#), [Stone Statue for Temple](#), [Stone Statue Manufacturer](#)

### Product Description

This auspicious Sandstone Ganpati Statue has five faces named "Pancha Mukhi Ganesha", where each head attributes five koshas. This well-carved Ganesha god statue has the ability to make your garden landscaping decor flourish. An excellent piece of utter grace and elegance of Lord Ganesha. Holding axe, hammer, noose, beads, broken tusk, laddoo, and Abhaya mudra with His hands.

**Material:** Sandstone / Khondalite Stone **Height:** 5 ft (approx.) **Dimension(HWL) :** 60 x 50 x 24 inch **Statue position:** Sitting

The human body is made up of five senses, sense of sight, smell, taste, touch, and hearing also five elements of creation are earth, air, fire, water, and space where all matter is composed, so in this way they are five facets to god. Pancha Mukhi of Lord Ganesh symbolizes our entire body form and lead us to Ultimate Bliss in the end, they are



- Annamaya kosha: The flesh body made of matter.
- Pranamaya kosha: The energy body.
- Manomayakosha: The mental body.
- Vighnnamayakosha: The body of the Upper Consciousness.
- Anandamayakosha: The body of Cosmic Bless.

Anna means food, prana is life-giving, vijana means intellect, ananda is cosmic bliss, of the subtle body. Thus this stone sculpture is a representation of all forces. This five-head Ganesha is also known as "Heremba Ganpati". In this statute, Ganesha is sitting with one foot on the ground and the other one is resting on the platform where he is sitting above the ground. Which is a message that a person is of this earth but not entirely of this earth. Keeping this decorative stone idol evokes the power to regulate these five senses. Which would help to forbid evils and bring positivity into the surrounding. Besides being potentiated with Cosmic Energy, he is also the destroyer of pride, selfishness, and egotism. This Ganesha Stone Statue for Outdoor would witness a positive transformation in lives by doing so for sure. **Placing:** Of course, the zonal strength of the idol location, itself, also plays a major role in a favorable result. This idol should be kept in such a way of facing towards the east is best to pick. You can also consider placing it in the northeast direction too. **Care:** Sandstone does not need much maintenance, however, it's an Outdoor Stone Statue the stone can stand up to any climate, so periodically dusting is enough to clean up the dirt. ***"A truly spiritual elegance reflecting the artistic quality and divinity of the idol leaves a lasting impression on the viewer."***



## Sandstone Ganapati Statue Landscaping

[Read More](#)

**SKU:** 01543

**Price:** ₹225,000.00

**Stock:** outofstock

**Categories:** [Ganesha](#)  
[Hindu Statues](#), [Statue](#)

**Tags:** [Big Ganesha](#)  
[Decoration for Home](#)  
[Decorative Statue](#)  
[Ganesha God Statue](#)

[Ganesha Idol at Home](#), [Ganesha Idol Online](#), [Ganesha Statue Decor for Garden](#), [Ganesha Stone Sculptures](#), [Ganesha Stone Statue for Outdoor](#), [Hindu God and Goddesses](#), [Outdoor Stone Statue](#), [Sand Stone Ganesha Statue](#), [Sandstone Ganpati Statue](#), [Stone Statue for Temple](#), [Stone Statue Manufacturer](#)

## Product Description

Sandstone Big Panchamukhi Ganapati Statue for Garden Landscaping is a piece of the amazeballs tradition of famed stone carving from Odisha which holds a legacy of ancient culture. The five-faced Ganesha is the consul of joy, peace, prosperity, and success.

**Material:** Sandstone/Redstone **Height:** 6 ft **Dimension(HWL):** 72 x 50 x 30 inch **Position:** Sitting

Each of his heads demonstrates Five koshas (Five sheaths). human bodies are made of three bodies those are physical, astral, and casual within which contain five koshas or sheaths which are "Annamaya Kosha", "Pranamaya Kosha", Manomaya kosha", "vijnanamaya kosha" and "Anandamaya Kosha". let's explain these :

- **Physical body:** It is the skin and bone where the body is made, in another word it consists of five elements which are fire, water, earth, air, and sky.
- **Astral body:** Our senses. organs of action. organs of knowledge, five prana, and four elements of Antahkarana (mind, intellect, subconscious, and ego).there are 19 elements in our astral body. used for feeling and sensing.
- **Casual body:** It contains all of the previous experiences, memories, habits, and information we have already lived.

Let's understand the sheaths:

- **Annamaya Kosha: FOOD sheath.** This kosha belongs to our physical body. (We are what, we eat).
- **Pranamaya Kosha: Vital sheath.** This kosha Belongs to the astral body. The karma indriya.
- **Manomaya Kosha: Mental sheath.** Again it belongs to the astral body. The four elements of Antahkarana.
- **Vijnanamaya kosha: Intellectual sheath.** Five organs of knowledge.
- **Anandamaya Kosha: Cosmic bliss sheath.** It's the casual body.

By worshipping the five-faced idol we attain the power to regulate these five senses the sat chit ananda. His five face is the personification of all potentiality. The statue for garden landscaping

amplifies spirituality, harmony, and bliss in the surrounding. **Placing:** Placing Panchamukhi Ganesha in the east home or office, things will start to happen in your favor and parry you from the evil eye, and bring prosperity into life. The Northeast or west corner is also favorable to place the garden statue.

**Care:** You can bathe the statue, or can simply wipe it with a cloth or broom.



## Sandstone Polished Large Lion Statue Set for Home Entrance 5 ft (Pair - 2Pcs)

[Read More](#)

**SKU:** 01518

**Price:** ₹403,200.00 inc. GST

**Stock:** outofstock

**Categories:** [Lion Statues](#), [Animals & Birds Statues](#), [Garden Sculptures](#), [Hindu Statues](#), [Statues & Sculptures](#)

**Tags:** [Animal Statue for Garden](#), [Animal Statue for Home](#), [Big Size Lion Stone Statue](#), [garden decor](#), [Garden Stone Statue](#), [home décor](#), [Lion Sculpture](#), [Lion Statue for Home](#), [lion statue for temple](#), [Lion Statue Manufacturer](#), [Lion Stone Statue for Garden](#), [Outdoor Lion Sculpture](#), [Outdoor Stone Statue](#), [Statue for Home](#), [stone lion idol](#), [stone lion statue](#), [Stone Statue Manufacturer](#)

### Product Description

The Large Lion Statue is an incredible piece of work of the skilled artisans of Odisha. A design that can be a conversation starter for its intricate detailing, serves as a bold and impactful statue for your entrance. **Material:** Sandstone / Khondalite stone **Dimension(HWL):** 48 x 60 x 24 inch **Height:** 4 ft (approx.) **Width:** 5 ft (approx.) **Position:** Sitting **Word picture of the astonishing duo set:**

- The statue is seen sitting on a flat pedestal.

- The stone engraved on the sculpt is in such details that will make you speechless at first glance.
- The facial expression is given that exudes power and elegance from the statue.
- As the stone carving of Odisha is popular globally it is thus, can be seen in the above hand-carved by craftsman, filled with depth and rich chiseling.

### **The mythical beliefs of the phenomenal lion set :**

- In Hinduism, one of the incarnations of Lord Vishnu was Narsimha, a half man-half lion.
- Goddess Durga, the ten-armed warrior goddess has seen riding lions, as they are associated with power and nobility.
- There are many Hindu deities to where the lion is served as a Vahana, like, Parvati, Narasimhi, Katyayini, Skandamata, etc.
- In Buddhist culture statues of lions are said to bring peace and prosperity.
- The lion symbolizes pride, that's why in many Hindu temples, lions sit at the main entrance, believed to protect and guard the temple.

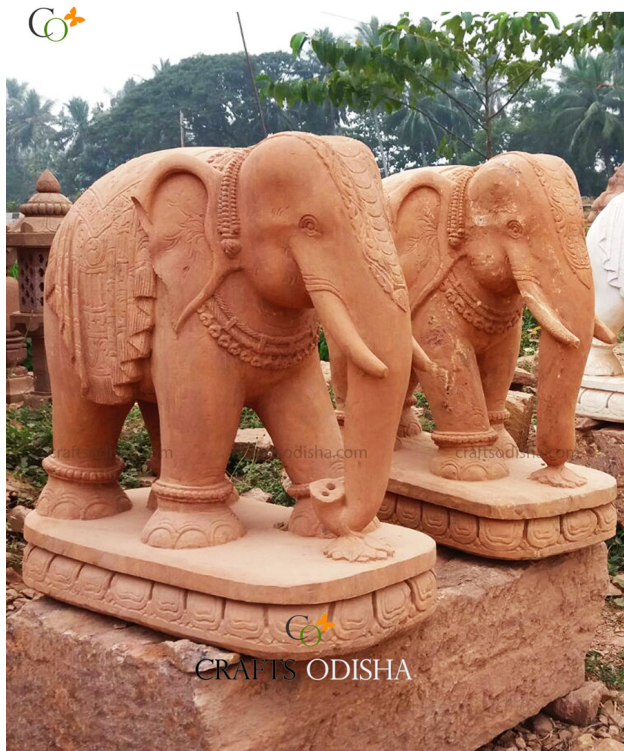
### **A guide to disposal of the stunning set of lions.**

- According to Vaastu, the pair should face the eastern side of the plot or Casa, and the lion should face the main entrance.
- Add a big splash of wild to any landscaping, garden decoration, swimming pool, and fountain decoration with a large size lion set.
- You can place the statue on each side of the entrance of your home, office, temple, or entryway of the zoo and park.

### **Care and cleaning instruction :**

- Sandstone is an environment-friendly stone and looks fabulous with passing years.
  - Caring can also be done, keeping the durability of the stone within a schedule by not allowing dust to compile on the sculpture.
  - So caring can be done by giving bathe to it in running water. You can also prefer to wipe the statue with the help of a cloth or broom.
-





## Sandstone Polished Large Elephant Statue Set for Home Decor 3 ft (Pair - 2pcs)

[Read More](#)

**SKU:** 01516

**Price:** ₹196,000.00 Original price was: ₹196,000.00. ₹162,400.00 Current price is: ₹162,400.00. inc. GST

**Stock:** outofstock

**Categories:** [Elephant Statue](#), [Animals & Birds Statues](#), [Garden Sculptures](#), [Hindu Statues](#), [Statues & Sculptures](#)

**Tags:** [Animal Statue for Garden](#), [Animal Statue for Home](#), [Elephant Idol](#), [Elephant Statue](#), [Elephant Statue for Home](#), [Elephant Statue for Outdoor Garden](#), [garden decor](#), [Garden Stone Statue](#), [home décor](#), [Outdoor Stone Statue](#), [Statue for Home](#), [Stone Statue Manufacturer](#), [Vastu Elephant Idol](#)

### Product Description

The large elephant duo has a simplistic charm and sophisticated look which punches any exterior or interior décor. The elemental delight of the large elephant statue is sure to turn few heads. **Material:** Sandstone / Red stone **Dimension(HWL):** 36 x 18 x 36 inch **Height:** 3 ft (approx.) **Position:** Standing **Few emphases on the masculine charm:**

- The elephant statue is standing on a lotus pedestal with a downward pointed trunk.
- The adornment made on the various ornamentation of the statue has been engraved over the stone.
- The statement piece is from the land of Odisha which is famous across the globe for its traditional stone working.
- The skill and creativity of the artisans have beautifully expressed in the sculpture above.

### The major tie-in of the elephant with Hindu mythology and deities:

- He is relevant with Lord Ganesha, the epitome of wisdom.

- An elephant is ridden by Lord Indra known as "Airavat". He appeared during the churning of the ocean of milk.
- Hindu Goddess Laxmi also is widely known as Gaja-Laxmi, here "Gaja" means elephant, thus Gajalaxmi means, Laxmi with elephants. She is always seen flanked on both sides by an elephant (Gaja).
- In Buddhism too the elephant has a significant role, as, before the birth of Lord Buddha, his mother Maya dreamed of an elephant.

### Tips to follow while placing the powerful mammal with benefits:

- Placing the statue at the entrance is considered to be lucky.
- Place him facing outward whenever you place him at any entrance of home, office, or restaurant.
- Place it in the north direction for career and academic growth.
- The downward elephant trunk represents the ability to solve challenges, such position of the trunk is beneficial for office, warehouse related work environment.
- Place it around the garden, lawn, front yard of restaurant, palace, park, Swimming pool, fountain, and zoo. You opt to place it on both sides or even maximize the number with your requirement.

**Cleaning instruction:** No matter whether it is placed, indoor or outdoor, you need to care of the statue. So that dust won't make any compile on its surface. So you just clean it with running water or wipe it down with a cloth or broom.

---



## Sand Stone Ashtabhuja Maa Durga on Tiger Statue 1 ft

[Read More](#)

**SKU:** 01363

**Price:** ₹25,000.00 inc. GST

**Stock:** outofstock

**Categories:** [Hindu Statues](#), [Maa Durga Statue](#)

**Tags:** [Maa Durga Idol](#), [Maa Durga Moorti](#), [Maa Durga Murti](#), [Maa Durga Statue](#), [Maa Durga Statue for Home](#), [Maa Durga Stone Statue Manufacture](#), [Stone Statue Manufacturer](#)

## Product Description

**The earthy color and distressed finish of the "Astabhuja Maa Durga statue" is the perfect decor piece for any interior theme, objectifying a classic religious statement, allowing you to arrange however you like. Material:** Sandstone / Redstone **Dimension (HWL):** 12 x 8 x 4 inch **Position:** Sitting **Height:** 1 ft **Some features featuring the notable statue:**

- The above statue is the effigy of "Maa Durga", who is associated with motherhood, protection, strength, and war.
- A motherly figure is usually depicted riding a lion, with eight arms each carrying different weapons.
- Stone carving is a job, done with proficient hands to give a formless rock to a lifelike effigy, or whatever finish is required. As the above work of art is a creation by the adroitness of artisans of Odisha.

## Jagadamba: Mother of the universe

- The word **Durga** is formed from two words "**Dur**" & "**Gam**", which means a fort that is difficult to pass through. Goddess Durga protects the world just like a fort protects its empire.
- She emerged only to kill a demon named Mahishashura who causes chaos in all three worlds with the immortal power he got from Lord Bramha.
- Lord Vishnu, Shiva, Bramha, and other gods united and transformed their energy into a shape of women of divine appearance which is powerful enough to vanquish the demon.
- With a nine-day long battle carried away between them and the tenth day, she flung her trident which dropped the demon dead at her feet.
- The nine-day long festival is celebrated as Navami and the tenth was Vijay Dashami to rejoice in the win of good over evil.

## Complement your ambiance with the weathered sculpture:

- Vaastu recommends the southeast corner for the placement of the Goddess Durga's idol at home/office.
- To show off the art piece to its full potential, place it on a heightened table in your entryway/foyer/hallway/gallery.
- You can put it on the bookshelf or the accent shelving unit, this allows everyone to admire it more easily.

- Go one step further to showcase it on a floating shelf above your sofa, windowed cabinet, or patio using your imagination.
- "Giving begins at home and extends beyond the home" with the above decorative stone exchange message of love, motherhood, and trust among your friends and families.

**Seek the blessing of Maa Durga by keeping the sacred idol:**

- Goddess Durga alleviates the malicious effects of the mercury planet of your horoscope.
- Her worshiper always bestowed with peace, prosperity, and material wealth.
- Lead a completely happy and healthy life with her grace and blessing.

**Ensure your artwork retain their beauty with proper care:**

- Sculpture made out of Sandstone provides timeless benefits like weather-resistant, slip-resistant, and durability.
  - Start with the gentlest cleaning method of wiping the exterior, with a clean dry cloth to remove the dust and dirt.
  - A monthly cleaning will keep the decorative stone looking at its best.
-