



Big Sandstone Sitting Teaching Buddha Statue for Outdoor Park and Garden

[Read More](#)

SKU: 01628

Price: ₹120,000.00 Original price was: ₹120,000.00. ₹100,000.00 Current price is: ₹100,000.00. inc. GST

Stock: outofstock

Categories: [Buddha Statues](#), [Garden Buddha Statue](#), [Sitting Buddha Statues](#), [Statues & Sculptures](#)

Tags: [Big Buddha Statue for Outdoor](#), [Buddha Decor for Garden](#), [Buddha Garden Statue](#), [Sandstone Stone Buddha Statue Manufacturer](#), [Sandstone Stone Statue and Sculpture Manufacturer](#), [Sandstone Stone Statue For Home and Garden](#)

Product Description



Sandstone Buddha Murti Teaching Outdoor Garden

[Read More](#)

SKU: 01624

Price: ₹40,000.00

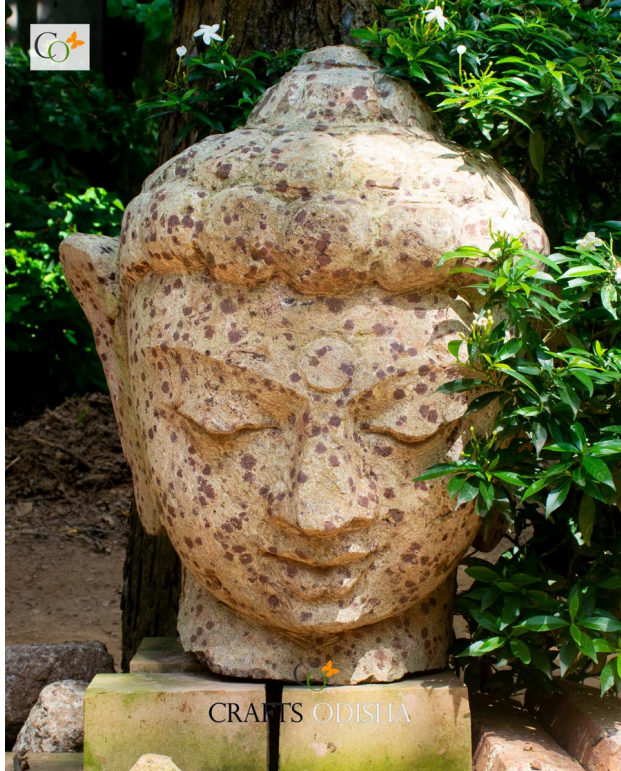
Stock: outofstock

Categories: [Buddha Statues](#), [Sitting Buddha Statues](#)

Tags: [Big Buddha Statue](#), [Buddha Decor for Garden](#), [Buddha Garden Statue](#), [Sandstone Stone Buddha Statue Manufacturer](#), [Sandstone Stone Statue and Sculpture Manufacturer](#), [Sandstone Stone Statue For Home and Garden](#)

[Statue for Interior Designing](#), [Sandstone Stone Buddha Statue Manufacturer](#), [Sitting Buddha Statue](#)

Product Description



Baulamala Stone Beautiful Buddha Head Statue for Outdoor Garden

[Read More](#)

SKU: 01622

Price: ₹40,000.00 inc. GST

Stock: onbackorder

Categories: [Buddha Head Statues](#), [Buddha Statues](#), [Garden Buddha Statue](#), [Statues & Sculptures](#)

Tags: [Baulamala Sandstone Statue Manufacturer](#), [Big Buddha Statue for Outdoor](#), [Buddha Head Idols](#), [Buddha Head Sculpture](#), [Buddha Head Stone Statue For Garden](#), [Buddha Stone Sculpture](#), [Buddha Stone Statue Manufacturer](#)

Product Description



Sandstone Buddha God Earth Touching Sitting Statue

[Read More](#)

SKU: 01615

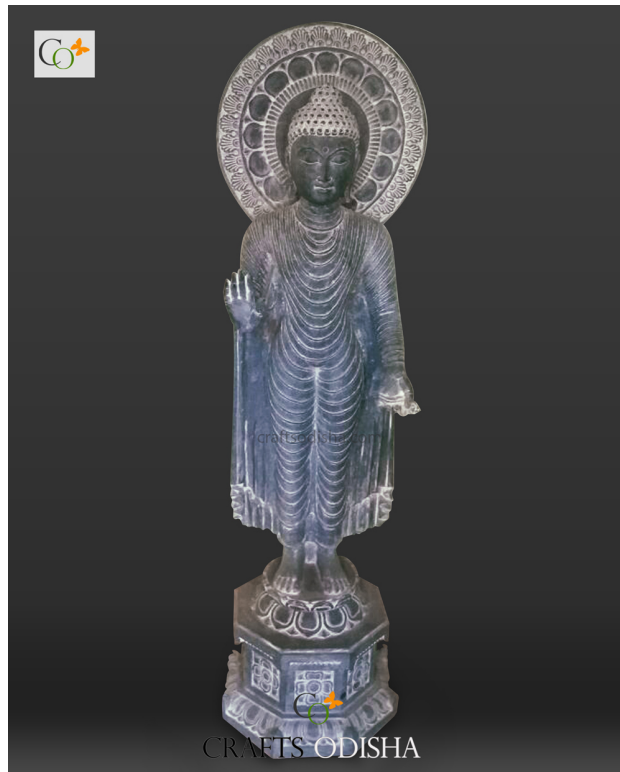
Price: ₹42,000.00 inc. GST

Stock: onbackorder

Categories: [Garden Buddha Statue](#), [Buddha Statues](#), [Sitting Buddha Statues](#), [Statues & Sculptures](#)

Tags: [Big Buddha Statue for Outdoor](#), [Buddha Decor for Garden](#), [Buddha Garden Landscaping](#), [Buddha Garden Statue](#), [Buddha Home Decor Statues](#), [Buddha Statue Online for Home and Garden](#), [Sandstone Buddha Statue](#), [Sandstone Stone Buddha Statue Manufacturer](#)

Product Description



Standing Buddha Blessing Statue Decor

[Read More](#)

SKU: 01552

Price: ₹210,000.00

Stock: onbackorder

Categories: [Garden Buddha Statue](#), [Garden Sculptures](#), [Statues & Sculptures](#)

Tags: [Big Buddha Statue](#), [Sandstone Buddha Statue](#), [Stone Buddha Statue](#), [Stone Buddha Statue Manufacturer](#), [Buddha Decor for Garden](#), [Buddha Garden Landscaping](#), [Buddha Garden Statue](#), [Buddha Home Decor Statues](#), [Buddha Statue Online for Home and Garden](#), [Sandstone Buddha Statue](#), [Sandstone Stone Buddha Statue](#)

[Statue](#), [Buddha Stone Sculpture](#), [Buddha Stone Statue](#)
[Manufacturer](#), [Craft Decoration for Home](#), [Decorative](#)
[Statues for Home](#), [ft Buddha Statue](#), [Granite Stone](#)
[Buddha Statue](#), [Hindu God and Goddess](#), [home décor](#),
[Home Statue Decor](#), [Indian Statues](#), [Lord Buddha Idols](#),
[Muguni Stone Statue](#)

Product Description

This Standing Granite Black Stone Blessing Buddha Home Garden Statue 4 ft is fine craftsmanship from the lands of Odisha. A traditional and subtle sculpture with a distressed finish engaging impression through its great size. This gigantic traditional and subtle sculpture depicts the distressed Buddha and to behold your gaze. To add tranquility to your kickback area use this piece of great Kalingan art. Place it in your kickback area would add tranquility.

Material: Black stone / Granite Stone **Dimension(HWL):** 48 x 24 x 14 inch **Height:** 4 ft

Position: Standing

The story behind Budhha's posture in this granite statue: This posture indicates the story of the day after having attained enlightenment when he is ready to teach the four noble truths to people. Here Buddha is standing with his right hand raised towards the shoulder, gesturing to the Abhayamudra, and his feet are planted firmly on the ground. In Sanskrit Abhay means fearlessness. So here Budhha is providing the wisdom that'll remove the fear of the unknown. And his left-hand hangs down on the side of his body. His facial expression shows that he is at peace with life. **About Lord Buddha:** Siddhartha Gautama, the son of king Shudhodana and Queen Maya of the Shakya clan. A presage was given at his naming ceremony, that either he would be a powerful king or a spiritual leader. Although his father tried every effort to keep him away from all means of suffering and sorrows of life, raised him with wealth and luxury. At the age of twenty-nine, he was already married, and had a son. Then one day he saw an old-aged man, a sick person, at a funeral and a religious ascetic. He realizes life is full of suffering, which arises from want or loss. So he decided to leave the lavish life, that he was leading so far, in search of a way to escape from this suffering. It took him six long years to find the answer to all his quests, which he discovered finally by meditating forty-nine days under a fig tree, near Bodh Gaya. He attained enlightenment and became "Buddha" and hence became the founder of Buddhism. Buddha means "a person who is awake" or "a knower". In his enlightenment, he discovered the mind is at total peace, and the soul is merged with the universe. This state of mindfulness arises only when a person's desire and sufferings go away completely. **How to make a statement with this beautiful statute at your place: Using this craft decoration for home, office, and lawn:** Place this graceful statue near a water body, or fountain, close to a pillar. You can keep it in your garden or lawn area for a soothing atmosphere, with plants, flowers, and trees beneath it adding more rejuvenation to the

propitiate. You can place it close to a water body or fountain, along a sidewalk, your restaurant, or park that you just designed, etc. As it represents the earth element, so placing this Buddha statue in the Northeast, southwest, and center will be more auspicious according to Vastu. **How to clean to get rid of dust:** Cleaning the Buddha statue should be a pain. With a dry cloth or broom, it is enough to get rid of the dirt. Clean it once every month to keep your garden or home looking stunning. **More about the black stone and carving:** The traditional art form of Stone Carving is one of the oldest continuing traditions in the world in Odisha, especially at Ratnagiri, Lalitgiri, and Udaygiri and in and around Puri. So bring a piece of history of 2nd century India to your home.



Sandstone Laughing Buddha Statue for Money - Home and Garden

[Read More](#)

SKU: 01542

Price: ₹30,000.00 inc. GST

Stock: onbackorder

Categories: [Garden Buddha Statue](#), [Buddha Statues](#), [Garden Sculptures](#), [Sitting Buddha Statues](#), [Statues & Sculptures](#)

Tags: [Big Buddha Statue for Outdoor](#), [Buddha Decor for Garden](#), [Buddha Garden Landscaping](#), [Buddha Garden Statue](#), [Buddha Home Decor](#), [Buddha Home Decor Statues](#), [Buddha Home Statue](#), [Buddha Stone Sculpture](#), [Buddha Stone Statue Manufacturer](#), [Craft Decoration for Home](#), [Decorative Statues for Home](#), [ft Buddha Statue](#), [Hindu God and Goddess](#), [home décor](#), [Home Statue Decor](#), [Indian Statues](#), [Laughing Buddha Stone Statue for Home and Garden](#), [Lord Buddha Idols](#), [Sand Stone Buddha Statue](#), [Sandstone Buddha Statue](#)

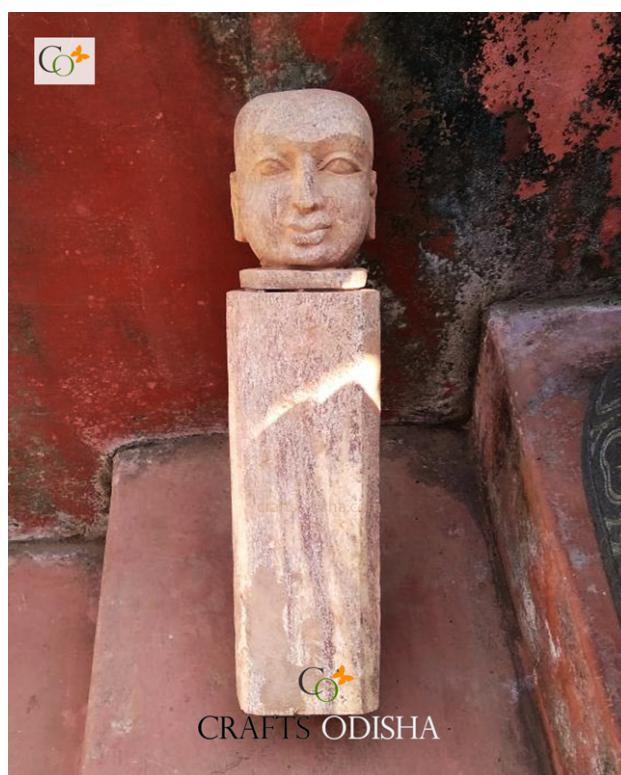
Product Description

Sandstone Laughing Buddha Statue for Money – Home and Garden, is a symbol of copiousness, indulgence, and good fortune. The showpiece is able to foreground the beauty of your personal space.

Material: Sandstone/Redstone **Height:** 2 ft **Dimension(HWL):** 24 x 16 x 12 inch **Position:** Sitting

Called "Budai" in Chinese. The Chinese zen monk, considered to be a man of good and loving character. A sitting posture of Buddha is assessed to be the stability of thoughts and quietude. The Chinese monk is usually depicted as a roly-poly, bald-headed, laughing with a rotund stomach. He holds a lot of significance with his posture in our life. The idol has been seen in a meditation pose, has both the palms on his lap holding balls of wealth, half-closed eyes, and smiling. The monk with balls represents the practice of meditation. The ball is considered to be the ball of wealth. The smiling Buddha holding balls in both hands illustrate affluence and clover. It is believed that by consuming all the negative energy he develops the potbelly. In India, he resembles Kubera, the deity of prosperity. The statue is said to bring fulfillment and calmness to the environment where it is placed. Not only brings a stick of luck but also strengthens and mends all the sectors of your life in a positive way. The stone or brown paint laughing buddha statue associate with the earth factor. Earth represents steadiness, subsistence, and grounding. Rubbing his belly is believed to bring more prosperity in life.

Placing: To bring harmony and happiness, place him in the east direction of your desired place. Placing him in the southeast was believed to increase in wealth. For gaining wisdom place him in the northeast. If you are willing to keep him at any entrance then make his face inside the main door. The garden is also a part of your home and connected to nature, so keeping him in the garden area will energize the spirit of nature as well as welcomes joy and laughter in your home and life. **Care:** The statue has fine polishing, dusting with a cloth or broom is sufficient to maintain the glossiness of the sculpture.



Sandstone Buddha with Pedestal

[Read More](#)

SKU: 01541

Price: Call for price

Stock: out of stock

Categories: [Buddha](#), [Garden Sculptures](#),

Tags: [Big Buddha Statue](#), [for Garden](#), [Buddha](#), [Garden Statue](#), [Buddha](#), [Decor Statues](#), [Buddha](#)

[Sculpture](#), [Buddha Stone Statue Manufacturer](#), [Craft Decoration for Home](#), [Decorative Statues for Home](#), [ft Buddha Statue](#), [Hindu God and Goddess](#), [home décor](#), [Home Statue Decor](#), [Indian Statues](#), [Lord Buddha Idols](#), [Sand Stone Buddha Statue](#), [Sandstone Buddha Statue](#)

Product Description

The bald Buddha head is a unique alternative to other traditional postures of Lord Buddha. Capturing the tranquil expression and displayed like the work of art that it is. Material: Sandstone / Redstone **Dimension(HWL):** 30 x 8 x 8 inch **Height:** 2.5 ft **The inimitable head with pedestal:**

- The bald head is conjoined in a 2.5 ft pedestal.
- The above sculpture is a visual delight and artistic masterpiece of the craftsman. Showcasing
- Lord Buddha's shaved head, is the initial period from his journey of enlightenment.
- The art of stone carving is an ancient practice of Odisha. Recognized globally for its unique and exclusive masterpiece bring to life by the artisans.

The essence of Lord Buddha :

- Lord Buddha is the 9th incarnation among the ten Avatars of Lord Vishnu.
- He was the pioneer of Buddhism. Buddha means the one who is awake.
- He achieved full awareness and became the Buddha. He was widely known as the "Enlightened One".
- The first teaching given by him was the "Four Noble Truths". Which focuses to find the path to get yourself free from the suffering of the universal pain, by following moral and ethical conduct.

A counsel to situate the extraordinary decorative stone statue:

- Lord Buddha is the epitome of peace and tranquility so placing him anywhere will fetch you good luck only.
- Placing him in the corridor of your office, college, home, and restaurant will attract a soothing atmosphere.
- You can even enhance the length by adding more length to the plinth and decorating in the center of the garden, park, and front yard.

- You can enhance the décor by putting it in the middle of the flowers, and colorful stones, and artificial water bodies.

How to take care :

- Sandstone is among the most durable material of all. And can stand to any weather.
- Dusting can be done by using a cloth or broom, wiping down over the surface will be enough to get rid of any dirt on the stone sculptures.



Odisha Sand Stone Sculpture Dharmachakra 4 ft Buddha Statue Online

[Read More](#)

SKU: 01540

Price: ₹120,000.00 inc. GST

Stock: outofstock

Categories: [Buddha Statues](#), [Garden Sculptures](#), [Sitting Buddha Statues](#), [Statues & Sculptures](#)

Tags: [Big Buddha Statue for Outdoor](#), [Buddha Decor for Garden](#), [Buddha Garden Landscaping](#), [Buddha Garden Statue](#), [Buddha Home Decor](#), [Buddha Home Decor Statues](#), [Buddha Home Statue](#), [Buddha Stone Sculpture](#), [Buddha Stone Statue Manufacturer](#), [Craft Decoration for Home](#), [Decorative Statues for Home](#), [ft Buddha Statue](#), [Hindu God and Goddess](#), [home décor](#), [Home Statue Decor](#), [Indian Statues](#), [Lord Buddha Idols](#), [Sand Stone Buddha Statue](#), [Sandstone Buddha Statue](#)

Product Description

Odisha Sand Stone Sculpture Dharmachakra 4 ft Buddha Statue Online, one of the most desirable icons helps to bring peace and harmony. An aura of quietude and placidity wherever you want to place it.

Material: Sandstone/ Redstone **Dimension (HWL):** 49 x 29 x 15 inch

Height: 4 ft **Position:** Sitting Gautama Buddha, founder of Buddhism, the Shakyamuni "the sage of the Shakya clan". The person who has to intend on a trek to discover the path to

freedom from suffering, leaving his royal life behind. Each statue has its own features and characteristics that define its meaning and purpose. Here he is in sitting form, called "**Vajrasana**" where his both leg crossed each other and both soles of the feet turned upward. Eyes are fully closed in deep meditating. The tip of the thumb and index finger of his right hand is touching and forming a circle, and the palm faces inwards and the left-hand palm facing up to receive. This posture depicts teaching, after attaining enlightenment when he gave his first sermon. The buddha statue becomes so precious, when you understand the meaning behind his poses, to live a mindful life. The teaching Buddha statue signifies intellect, understanding, and fulfilling destiny. He preaches four truths of life: **1. Dukha** - Suffering. **2. Samudaya**- Cause of suffering. **3. Nirodaya**- End of suffering. **4. Magga** - Sweep of suffering. Teaching Buddha statue is perfect for someone who is focusing on study or in spirituality. Buddha's statue sanctifies the mind, escalates the tranquility within oneself, and helps to overcome the negative feeling. It focuses on the reality of the worldly world. Also triggers self-discipline and peace of mind. Having a Buddha statue can boost the positivity in the surrounding, strengthening all weak facets of one's life. **Placing:** All thing have their particular place, according to Feng Shui, put it in a corner facing east, as it represents eternal knowledge and enlightenment. again you can stimulate restorative energy by placing him in the Northeast zone. If you are planning to place it in the garden then consider placing him near the water body or in the vicinage of flowering plants, which represent spiritual growth and reanimation. you feel more comfortable and relax while taking walk in the garden. **Care:** The statue proposes for outside too, so the stone can stand any weather, you can clean the statue with water as well as dusting can be done using a cotton cloth is, enough to ward off from dust.



Pink Soft Stone Buddha Decorative Home

[Read More](#)

SKU: 01539

Price: ₹160,000.00

Stock: onbackorder

Categories: [Sitting Buddha](#), [Garden Sculptures](#),

Tags: [Buddha Home](#), [Statues](#), [Buddha Home](#), [Sculpture](#), [Buddha](#)

[Decoration for Home](#), [Decorative Statues for Home](#), [ft Buddha Statue](#), [Hindu God and Goddess](#), [home décor](#), [Home Statue Decor](#), [Indian Statues](#), [Lord Buddha Idols](#), [Pink Stone Soap Stone Statue Manufacturer](#)

Product Description

Pink Soft Stone Khanja Work Buddha Decorative Statue for Home, is a brilliant piece of engraved stonework of art. Expressive detailing, rich stone finish, with a glossy earthy glaze, made the statue worth looking at.

Material: Pink stone/ Soapstone **Dimension(HWL):** 24 x 16 x 10 inch **Position:** Sitting Buddha the "awakened one". A prince who left his palace, leaving all material comfort in search of enlightenment. Buddha statue represents the life and teaching of Gautama Buddha. His posture, expression, hand gestures are notable. Serve those teaching in everyday life. The posture is called "Asana" and the hand gesture is called "Mudra". Here this posture of buddha is called "**Amithabha Buddha**" which means "**Boundless Light**". In this pose he is sitting on a lotus throne, both hands face up in the lap or you can say dhyana mudra (an ancient gesture of meditation), his eyes are fully closed as represent focused concentration, his leg crossed and sole of the feet turned upward. Lotus signifies overcoming struggles in our life. There was a time when he was in meditation so deep that he couldn't notice the rains and floods comes to sweep him away, the seven-headed snake king saw this and wrapped his coils around him, and lifted him out of the water. Then spread his hood over the top of the buddha to protect him, as we saw in this statue. Meditating Buddha typifies peace and placid in life. Seeing his divine image teaches us to remember that difficulties in the road to enlightenment are part of our journey, it helps to rebuild fortitude, purge our negative thoughts, and ingrain self-respect. Not only a great piece of decor it also amplifies the calmness of the interior. Create positive vibes in the space. Buddha cultivates your knowledge, stability. If the Buddha is of Earth tone, represent self-care and well-being. Keeping mediating stone Buddha statue at home extends peacefulness, rest of the senses as well as for everyone seeking serenity. **Placing:** The bigger the Buddha, the more fortune it can fetch. To reap the benefits of the statue, place it in a quiet corner of your home where you can sit and meditate, make sure the statue is placed at your eye level. You can also light up the incense sticks or Diya to spread the vibe all around. **Care:** Wipe the statue with a cloth, you can also use a small brush to reach the engraved part.



Sitting Teaching Buddha Home Decor Statue Made of Sandstone

[Read More](#)

SKU: 01538

Price: ₹60,000.00 inc. GST

Stock: onbackorder

Categories: [Garden Buddha Statue](#), [Buddha Statues](#), [Garden Sculptures](#), [Sitting Buddha Statues](#), [Statues & Sculptures](#)

Tags: [Big Buddha Statue for Outdoor](#), [Buddha Decor for Garden](#), [Buddha Garden Landscaping](#), [Buddha Garden Statue](#), [Buddha Home Decor](#), [Buddha Home Decor Statues](#), [Buddha Home Statue](#), [Buddha Stone Sculpture](#), [Buddha Stone Statue Manufacturer](#), [Craft Decoration for Home](#), [Decorative Statues for Home](#), [ft Buddha Statue](#), [Hindu God and Goddess](#), [home décor](#), [Home Statue Decor](#), [Indian Statues](#), [Lord Buddha Idols](#), [Sand Stone Buddha Statue](#), [Sandstone Buddha Statue](#)

Product Description

Sitting Teaching Buddha Home Decor Statue Made of Sandstone is more than just ornamentation. Simple and elegant fit with indoor as well as outdoor furnish.

Material: Sandstone/Redstone **Height:** 3 ft (approx.) **Dimension(HWL):** 36 x 24 x 12 inch

Position: Sitting

His teaching formed the foundation for Buddhist philosophy. His philosophy is the middle way between assertiveness and incredulity. His basic teaching is the four noble truths. Noble truths "Aryastaya", Arya means a noble person, Satya means truth and reality. A noble person in an ethical and spiritual sense. The four noble truths are:

- The reality of suffering (within the samsara)
- Origin of suffering (mental states that generate suffering)
- End of suffering. (with peace, higher knowledge)
- The eighth fold path

Teaching Buddha statue is seen sitting comfortably on a lotus, with fully closed eyes. both legs folded, with the sole of feet face upward. Right hand raised to shoulder level with the tip of the index and thumb forming a circle (wheel of dharma), palm facing outward. while the left hand forming the same circle with the figures and resting in the lap facing upward. His raised right hand represents protection, while the second represents conquering fear. The teaching Statue depicts the life of the Buddha after achieving enlightenment when he first preaches his teaching. Known as "Dharma chakra Buddha". The most important phase of his life, where he shared all the knowledge during his enlightenment period with his disciples. Intellect, understanding, and fulfilling destiny represent Buddha's teaching statue. The statue can stimulate the energy of any corner where it is placed. It balances the inner peace. **Placing:** As it is a symbol of teaching you can place it in the northeast corner of your home, office, or garden. Ideal for those seeking knowledge, and spiritual growth. Placing it in the north sector boost career. Basically, if the Buddha statue is made from clay/stone, can be placed in the northeast, southwest, or in center to energize the earth element. **Care:** Very easy to dust, gently wipe the Buddha statue with a cloth or broom enough to prevent any dirt compile.



6 ft Decorative Sitting Buddha Granite Tree

[Read More](#)

SKU: 01537

Price: ₹475,000.00

Stock: onbackorder

Categories: [Garden Sculptures](#), [Garden Sculptures](#), [Sculptures](#)

Tags: [Big Buddha Statue](#), [Stone Statue Manu](#), [Buddha Garden Lar](#), [Buddha Home Deco](#), [Buddha Home Statu](#), [Buddha Stone Statu](#), [for Home](#), [Decorativ](#), [Statue](#), [Hindu God a](#), [Statue Decor](#), [India](#)

[Museum Statue](#), [Sand Stone Buddha Statue](#),
[Sandstone Buddha Statue](#), [Statue for Museum](#)

Product Description

6 ft Decorative Sandstone Sitting Buddha Statue under Granite Tree, is a masterpiece, able to leave a lasting impression on your guest. The earthy color with rugged texture gives the statue a deeply aged look. Material: Sandstone/Redstone (Buddha) and Blackstone/Granite (Dali work/ Tree) **Dimension (HWL):** 72 x 48 x 30 inch **Height:** 6 ft **Position:** Sitting Siddhartha Gautama, son of an Indian king, left all the luxury and royal life in search of enlightenment. The prince with his will, wisdom, and determination became the Buddha, attaining the highest possible mode of perfection. All of his teachings can be recapitulated in one word " Dhamma" which means truth. The principle of righteousness. Buddha has pleaded to become noble, not to please any other, but to be true to one's self. The only way to free yourself from suffering is the Dhamma than you can escape misery and attain nirvana. He discovers four noble truths: **The truth of suffering, the cause of suffering, the end of suffering, and the path that leads to the end of suffering.** Suffering can be mental or physical. Here the Buddha sitting under a tree, Both legs folded, sole of feet in upward faced. Both hands face up in the lap making a triangle with both the thumb which represents stability. Eyes completely closed represents deep meditation. The dot in the center of his forehead symbolizes wisdom. This form illustrates peace and calm. The pose widely recognizes as "Amitabha Buddha " which is means "boundless night. The Buddha statue is not only a décor piece for home or gardens, it also energizes inner peace, abundance, and de-stress. Placing him in work station amplifies success and wealth. Accumulates a positive vibe. **Placing:** According to Feng-Sui meditating statue of Buddha should face east direction because during his search for enlightenment Lord Buddha used to meditate when the sun rising. Keep the area clean always around the statue. remember to put him at eye level. This beautiful statue can be used in garden decoration, fountain decoration, swimming pool decoration, landscaping design, interior designing, outdoor or home decoration, this Statue can be used in temples or puja. You can also use it as an outdoor statue. **Care:** The durable stone statue can be cleaned with water. Gently wipe with a cloth or broom will prevent the dirt from accumulating.



Odisha khondalite Stone Big Polished Sitting Buddha Statue for Outdoor

[Read More](#)

SKU: 01536

Price: ₹450,000.00 inc. GST

Stock: onbackorder

Categories: [Garden Buddha Statue](#), [Buddha Statues](#), [Garden Sculptures](#), [Sitting Buddha Statues](#), [Statues & Sculptures](#)

Tags: [Big Buddha Statue for Outdoor](#), [Buddha Decor for Garden](#), [Buddha Garden Landscaping](#), [Buddha Garden Statue](#), [Buddha Home Decor](#), [Buddha Home Decor Statues](#), [Buddha Home Statue](#), [Buddha Stone Sculpture](#), [Buddha Stone Statue Manufacturer](#), [Craft Decoration for Home](#), [Decorative Statues for Home](#), [ft Buddha Statue](#), [Hindu God and Goddess](#), [home décor](#), [Home Statue Decor](#), [Indian Statues](#), [Lord Buddha Idols](#), [Sand Stone Buddha Statue](#), [Sandstone Buddha Statue](#)

Product Description

Odisha khondalite Stone Big Polished Sitting Buddha Statue for Outdoor is a beautiful showpiece of an earthy color statue. A touch of spirituality to your home decor.

Material: Sandstone/Khondalite stone **Height:** 8 ft **Dimension(HWL):** 96 x 63 x 30 inch

Position: Sitting

Buddha " **Awakened one** " The founder of Buddhism. He refers to himself as " **Tathagata** " which means " the one who has thus come/gone ". The monk who left the royal life in the search of enlightenment, attain it and preached it with his followers, the state beyond birth and death. Every statue of his delivers some meaning. Every posture has a specific hand gesture called "Mudra". Here the statue depicts as " **Calling the earth to witness** " or **Earth touching Buddha** ". Both of his legs crossed, soles of both feet turned upward, eyes partially open, the left hand is resting downward in the lap, while the right hand pointing to the ground with the palm facing inward towards himself. The story of calling the earth to witness fold up when on the verge of enlightenment, " Mara " the demon of pretense tried to deter him, from the culmination. But Buddha meditate all night long to get over the dread and decoy sent by

Mara and called the earth goddess to witness. Witnessing Buddha achieved enlightenment and share with the rest of the world, the earth goddess wrung her hair and released floodwaters that swept away the demon and all the decoys he has released. The fundamental teaching is the four noble truths. First is "DUKHA", the second is "DUKHA HAS A CAUSE", the third is "WE CAN KNOW THE CAUSE OF DUKHA". and last is " WISDOM OF ENLIGHTENMENT". His teaching is universal apart from any religion, culture, and country you were born in. Buddhism is also known as the science of the mind so, a person can achieve an inner peace of mind by practicing. A healthy state of mind is linked to our inner peace so keeping a buddha statue will strengthen mental health and peace. The sitting Buddha outdoor statue enhances the positive and harmonious vibe in the surrounding. The earthy color Buddha statue perfectly blends with mother nature and amplifies the natural spirit of your outdoor decoration. **Placing:** If you are choosing the statue for your outdoor garden, place it facing your house, the same applies if you are placing it at any entrance/porch. You can add water features, bubbling fountains, lightning around the statue, etc. **Care:** You can bathe the statue, as well as you can, wipe it with a cloth or a broom.



Light Pink S Teaching B Pedestal

[Read More](#)

SKU: 01535

Price: ₹800,000.00

Stock: onbackorder

Categories: [Buddh](#)
[Garden Sculptures,](#)
[Sculptures](#)

Tags: [Bansi Paharp](#)
[Buddha Statue for O](#)
[Buddha Garden Lar](#)
[Buddha Home Deco](#)
[Buddha Home Statu](#)
[Buddha Stone Statu](#)
[for Home, Decorativ](#)
[Statue, Hindu God a](#)
[Statue Decor, India](#)

[Museum Statue](#), [Sand Stone Buddha Statue](#),
[Sandstone Buddha Statue](#), [Statue for Museum](#)

Product Description

Material: Pink Sandstone **Dimension(HWL):** 96 x 64 x 30 inch

Height: 8 ft **Position:** Sitting **Description:** Light Pink Sandstone Big Sitting Teaching Buddha Statue with Pedestal, is a symbol of peace and tranquility. Buddha statue always has an important place in Vaastu sastra and Feng-Sui. Siddhartha Gautama, born to a royal family, relinquishes the lavish life and luxury, in search of enlightenment which he finally brings by meditating under a bodhi tree in Sarnath. which he later preach to others about how to achieve this spiritual state. Teaching Buddha is the display of the phase where he preaches his teachings. This pose is widely known as "**Dharma Chakra Buddha**". Dharma means "the way of righteousness", Chakra means "cosmos" if we coin together it interprets as "Universal moral order". The wheel of law has eight spokes representing the eightfold path of his teachings those are: 1. Right Understanding - Samma Ditthi 2. Right thought- Samma Sankappa 3. Right speech- Samma Vaca 4. Right action- Samma Kamanta 5. Right livelihood- Samma Ajiva 6. Right effort -Samma Vayama 7. Right mindfulness -Samma Sati 8. Right concentration - Samma Samadhi Dharma Chakra Buddha statue denotes the motion of the wheel of the Dharma. He is sitting comfortably on a pedestal, in Vajrasana also known as the adamant pose, with both the legs crossed each other with the soles of the feet face upward. The right hands are held in front of the chest (as the teaching is straight from the Buddha's heart) and formed the dharma chakra mudra by forming a circle with the tip of both the index finger and the thumb. The other three remaining fingers remain extended and have their own symbolic meaning, the middle fingers represent "Hearers", the index represents "Realization" and the little finger represents "Mahayana". The left-hand palm up, resting in his lap again forming the circle with the index and thumb, the rest of the fingers symbolizes jewels of the Buddhist principle they are **The Buddha, The Dharma, The Sangha**. Eyes fully closed. The teaching Buddha statue is commonly admired by those who seek wisdom, knowledge, and spiritual growth in life as it represents the continuous flow of energy. It helps to polish up focus and develop a positive attitude. **Placing:** Dharma Chakra Buddha is favorable if placed in the Northeast zone of your desire place. It will be eye-catching to place the statue near the plant, water body, swimming pool, fountain, garden area, etc. The white color blends easily with the natural background, and interior style. **Care:** The Buddha statue is weatherproof, You can bathe the statue, and wipe it with a cloth to prevent dust and dirt.



Sandstone Large Blessing Buddha Statue for Outdoor Garden or Park

[Read More](#)

SKU: 01534

Price: ₹135,000.00 inc. GST

Stock: onbackorder

Categories: [Garden Buddha Statue](#), [Buddha Statues](#), [Garden Sculptures](#), [Sitting Buddha Statues](#), [Statues & Sculptures](#)

Tags: [Big Buddha Statue for Outdoor](#), [Buddha Decor for Garden](#), [Buddha Garden Landscaping](#), [Buddha Garden Statue](#), [Buddha Home Decor](#), [Buddha Home Decor Statues](#), [Buddha Home Statue](#), [Buddha Stone Sculpture](#), [Buddha Stone Statue Manufacturer](#), [Craft Decoration for Home](#), [Decorative Statues for Home](#), [ft Buddha Statue](#), [Hindu God and Goddess](#), [home décor](#), [Home Statue Decor](#), [Indian Statues](#), [Lord Buddha Idols](#), [Sand Stone Buddha Statue](#), [Sandstone Buddha Statue](#)

Product Description



Pink Sand Stone Big Buddha Outdoor Statue Sitting on Life Story Base

[Read More](#)

SKU: 01533

Price: ₹2,400,000.00 inc. GST

Stock: onbackorder

Categories: [Buddha Statues](#), [Garden Buddha Statue](#), [Garden Sculptures](#), [Sitting Buddha Statues](#), [Statues & Sculptures](#)

Tags: [Bansi Paharpur Stone Buddha Statue](#), [Big Buddha Statue for Outdoor](#), [Buddha Decor for Garden](#), [Buddha Garden Landscaping](#), [Buddha Garden Statue](#), [Buddha Home Decor](#), [Buddha Home Decor Statues](#), [Buddha Home Statue](#), [Buddha Stone Sculpture](#), [Buddha Stone Statue Manufacturer](#), [Craft Decoration for Home](#), [Decorative Statues for Home](#), [ft Buddha Statue](#), [Hindu God and Goddess](#), [home décor](#), [Home Statue Decor](#), [Indian Statues](#), [Lord Buddha Idols](#), [Museum Statue](#), [Sand Stone Buddha Statue](#), [Sandstone Buddha Statue](#), [Statue for Museum](#)

Product Description

Material: Pink Sandstone **Dimension(HWL):** 120 x 48 x 36 inch

Height: 10 ft **Position:** Sitting **Description:** Pink Sand Stone Big Buddha Outdoor Statue

Sitting on Life Story Base, a fine off-white surface finish embellish the surrounding. Just from a single glance of the statue, your soul begins to feel relax and calm your mind. Siddhartha Gautama, when he was born a presage was given that either he would be a powerful king or a spiritual leader. Although he was born as a prince and before becoming a king, fate has restored some other plan for him, after he saw an old aged, a sick, a funeral and a religious ascetic. he realizes life is full of suffering, that arises from want or loss. So he decided to leave the royal and lavish life in search of enlightenment. Which he attains after 49 days of continuously meditating under a banyan tree, in Bodh Gaya. This statue depicts his phase of teaching life, where he delivered his first preach. He shared all the experiences he gained from meditation, the four noble truths, and the eightfold path. one will free himself from the wheel of

cosmos if he recognizes the truth and follows the path. The four noble truths are 1st.

Suffering, 2nd. **The cause of suffering**, 3rd. **The end of suffering**, and 4th. **The path leads to the end of suffering**. The eightfold paths are **Right Understanding, Right Thought, Right Speech, Right Action, Right Livelihood, Right Effort, Right**

Mindfulness, and Right Concentration. Teaching Buddha is widely recognized as Dharma Chakra Buddha. His statue's posture depicts the chakras by making circles (chakra) from the tip of the index and thumb in both hands. The right hand is raised and folded near the chest while the other rested on the lap. Sitting on a pedestal, Both legs crossed with each other (called Vajrasana), the sole of the feet face up with eyes completely closed. The statue of teaching Buddha is beneficial for those who seeking knowledge and spiritual growth in life. It is believed to enhance the positive energy of the space where it place. **Placing:** The Northeast sector is called favorable for Teaching Buddha. It will create a magnificent as well as soothing environment if you keep the statue outdoor with plants all around, atop a fountain, swimming pool, Lawn, etc. **Care:** The durable Sandstone Buddha statue can stand any weather. You can use water to clean or a cloth/broom to wipe it



Sand Stone Decorative Framed Outdoor Big Sitting Buddha Sculpture

[Read More](#)

SKU: 01532

Price: ₹425,000.00 inc. GST

Stock: onbackorder

Categories: [Garden Buddha Statue](#), [Buddha Statues](#), [Garden Sculptures](#), [Sitting Buddha Statues](#), [Statues & Sculptures](#)

Tags: [Big Buddha Statue for Outdoor](#), [Buddha Decor for Garden](#), [Buddha Garden Landscaping](#), [Buddha Garden Statue](#), [Buddha Home Decor](#), [Buddha Home Decor Statues](#), [Buddha Home Statue](#), [Buddha Stone Sculpture](#), [Buddha Stone Statue Manufacturer](#), [Craft Decoration for Home](#), [Decorative Statues for Home](#), [ft Buddha Statue](#), [Hindu God and Goddess](#), [home décor](#), [Home Statue Decor](#), [Indian Statues](#), [Lord Buddha Idols](#), [Sand Stone Buddha Statue](#), [Sandstone Buddha Statue](#)

Product Description

Sand Stone Decorative Framed Outdoor Big Sitting Buddha Sculpture, is an artistic piece symbolizing peace, harmony, and self-realization. An excellent choice for meditating area, while capturing a sense of inner peace.

Material: Sandstone/ Redstone **Height:** 7 ft (approx.) **Dimension(HWL):** 84 x 56 x 30 inch

Position: Sitting Despite being born in a royal family he left all the luxury behind and went in the search of enlightenment. According to the belief he is considered to be the 9th reincarnation of Lord Vishnu. The different posture of Lord Buddha has different morality in life. The "Meditating Buddha" in this posture of lord buddha is seated with folded legs, both soles of feet turn upward, both hands resting on the lap, the back of the right palm is resting on the left-hand palm, the two thumbs coin together forming a triangle symbolizing the unity of Buddha, Dharma, and Sangha. Partially closed eyes. The dot on the forehead signifies wisdom. The dhyana mudra of the statue depicts peace and calmness. The meditating statue is also known as "Amitabha Buddha" which means "boundless night". Where he understood how to free oneself from suffering (Dukha) and achieve salvation. Lord Buddha and his teaching is an inspiration, for every individual. It gives peace to our mind, heart, and soul. The Buddha statue is also a sign of hope and courage. The path of enlightenment can be achieved only through meditation, virtue, and wisdom. Keeping Meditating Buddha at home or office brings peace and tranquility. To lead a happy life inner peace is the most need which can be achieved through deep meditation. Buddha statue always believed to spread positive vibe in its surrounding where it place. **Placing:** As it is presenting meditation so, it would be supportive in your meditation area. Always place it facing towards home, or office if you are opting to place it in the garden or outdoor space. Keeping an earth color Buddha is favored for self-care and wellbeing. The earthy color statue is also so mesmerizing to place in garden, landscaping, and near fountain or pool believes to amplify the spiritual vibe. **Care:** Clean with water, or you can wipe it with a cloth also don't let the dirt settle in.



Pink Sandstone Statue Blessing Buddha Decor for Garden Landscaping

[Read More](#)

SKU: 01531

Price: ₹350,000.00 inc. GST

Stock: onbackorder

Categories: [Buddha Statues](#), [Garden Buddha Statue](#), [Garden Sculptures](#), [Sitting Buddha Statues](#), [Statues & Sculptures](#)

Tags: [Bansi Paharpur Stone Buddha Statue](#), [Big Buddha Statue for Outdoor](#), [Buddha Decor for Garden](#), [Buddha Garden Landscaping](#), [Buddha Garden Statue](#), [Buddha Home Decor](#), [Buddha Home Decor Statues](#), [Buddha Home Statue](#), [Buddha Stone Sculpture](#), [Buddha Stone Statue Manufacturer](#), [Craft Decoration for Home](#), [Decorative Statues for Home](#), [ft Buddha Statue](#), [Hindu God and Goddess](#), [home décor](#), [Home Statue Decor](#), [Indian Statues](#), [Lord Buddha Idols](#), [Sand Stone Buddha Statue](#), [Sandstone Buddha Statue](#)

Product Description

Material: Pink Sandstone **Dimension (HWL):** 60 x 40 x 20 inch

Height: 5 ft **Position:** Sitting **Description:** Pink Sandstone Statue Blessing Buddha Decor for Garden Landscaping, an artisanal elegance. Demonstrating the fearless, protected from negativity, and blessing mudra. Buddha foreshadower of Buddhism. The term Buddha means "The enlightened one". There are different mudras of Buddha where he conveys different meanings with his posture and gesture. This form of his structure is known as blessing buddha or protection buddha in other words he is known as "**Amogsiddh Buddha**", Amogh means "unerring" siddhi means "success". named for his foolproof attainment. Blessing/protection Buddha sits with his right hand raised in Abhaya mudra (gesture of fearlessness) facing outward, it symbolizes protection or shield (divine protection), while the left-hand palm, joining of the index finger and thumb to form a ring, resting in the lap facing upward represents the constant flow of energy/information. Both legs crossed, and feet sole turned upward. His eye completely closed. The dot on his forehead, where the third eye is demonstrates the vanishing point. His

long and droopy ears depict his nobility before attaining enlightenment (stretch by jewels which he wore), which signifies the hope of transformation. Protection Buddha denotes self-reliance and provides protection from alarm, self-deception, and spleen. A perfect choice for those who seek energy from an enlightened being. The protection Buddha is also useful for healing Vaastu dosa, any area that requires it. The Garden is an ideal space for relaxation so keeping the Buddha statue at any corner of the garden works wonders in pacifying feel in the surrounding. **Placing:** The decor accessories bring tranquility to your space. You can also place him at the entrance facing inward of your home, to ward off from negative elements. As the statue is in a white tone so the statue blend with the natural color of the outdoor garden and gives a feast to your eye. You can also place him near the flowering tree, fountain, pool area, etc. **Care:** You can bathe the statue, a cloth or broom is also useful for dusting.



Granite Muguni Stone Meditation Statue of Lord Buddha for Garden 6 ft

[Read More](#)

SKU: 01530

Price: ₹450,000.00 inc. GST

Stock: onbackorder

Categories: [Garden Buddha Statue](#), [Buddha Statues](#), [Garden Sculptures](#), [Sitting Buddha Statues](#), [Statues & Sculptures](#)

Tags: [Big Buddha Statue for Outdoor](#), [Black Granite Stone Statue Manufacturer](#), [Black Stone Buddha Statue](#), [Buddha Decor for Garden](#), [Buddha Garden Landscaping](#), [Buddha Garden Statue](#), [Buddha Home Decor](#), [Buddha Home Decor Statues](#), [Buddha Home Statue](#), [Buddha Stone Sculpture](#), [Buddha Stone Statue Manufacturer](#), [Craft Decoration for Home](#), [Decorative Statues for Home](#), [ft Buddha Statue](#), [Granite Stone Buddha Statue](#), [Hindu God and Goddess](#), [home décor](#), [Home Statue Decor](#), [Indian Statues](#), [Lord Buddha Idols](#), [Muguni Stone Statue](#)

Product Description

Granite Muguni Stone Meditation Statue of Lord Buddha for Garden figurine is a graceful way to spread harmony in the surrounding. A dark finish artisanal elegance outdoor appealing display.

Material: Blackstone/ Granite **Dimension (HWL):** 72 x 48 x 24 inch

Height: 6 ft **Position:** Sitting Buddha statue is not only a decorative piece, its have many depictions, each expression of hand, eye, legs, posture illustrate the life of Lord Buddha. Born as Siddhartha Gautama in a royal realm. Conquer the name of Buddha himself after practiced meditation beneath a Bodhi tree, until pull-off enlightenment. Here he is seen in meditating posture, the phase of attaining enlightenment. Also known as " Amitabha Buddha" the boundless light. He is seen sitting in "Vajrasana", with Both hands resting on his lap, the right-hand palm is resting on the palm of the left hand forming a triangle with the tip of the thumb of both hands. The triangle is a symbol of stability. As he is in meditation so his eyes are closed fully in deep concentration. The dot on his forehead is the symbol of wisdom. This effigy delineates peace, harmony, and serene. For people seeking inner peace and spiritual growth, then Amitabha Buddha is best. Also helps in the office as it amplifies the focus and attracts wealth. **Placing:** You can place him in a secluded corner, of your home where you can sit and relax. The meditating statue should keep facing east because he meditated during the sun rising during his enlightenment period. If you want to add relaxation to your garden, then meditating Buddha will be an ideal choice, place him near Flower plants, water bodies. You can place the Idol atop of fountain, pool, lawn. It will add positive energy to your yoga room, will boost your mood, and maintain the balance of unwinding. You may burn few sticks of license or put some flowers in front of the statue as a gesture of respect and reverence. **Care:** Granite stone is a durable material that can stand any severe Strome, and is able to stand the test of time. For cleaning purposes, you can bathe the statue. The wipe can be done using a cloth or broom.



Bansi Paharpur Stone Meditating Buddha Idol for Home

[Read More](#)

SKU: 01529

Price: ₹167,000.00 inc. GST

Stock: onbackorder

Categories: [Buddha Statues](#), [Garden Buddha Statue](#), [Garden Sculptures](#), [Sitting Buddha Statues](#), [Statues & Sculptures](#)

Tags: [Bansi Paharpur Stone Buddha Statue](#), [Big Buddha Statue for Outdoor](#), [Buddha Decor for Garden](#), [Buddha Garden Landscaping](#), [Buddha Garden Statue](#), [Buddha Home Decor](#), [Buddha Home Decor Statues](#), [Buddha Home Statue](#), [Buddha Stone Sculpture](#), [Buddha Stone Statue Manufacturer](#), [Craft Decoration for Home](#), [Decorative Statues for Home](#), [ft Buddha Statue](#), [Hindu God and Goddess](#), [home décor](#), [Home Statue Decor](#), [Indian Statues](#), [Lord Buddha Idols](#), [Sand Stone Buddha Statue](#), [Sandstone Buddha Statue](#)

Product Description

Material: Pink Sandstone **Dimension(HWL):** 30 x 20 x 10 inch

Height: 2.5 ft **Position:** Sitting

Description: Bansi Paharpur Stone Meditating Buddha Idol for Home is a classy piece of aesthetic way to festoon. A soul-satisfying figurine imparts a luxurious outlook. Before becoming a spiritual leader, philosopher, Lord Buddha was born as a prince of a royal state. After acknowledging the presage that the child may be a great emperor or a spiritual leader in the future his father tried so much to keep him away from all awful things, as he wanted him to be his successor. But fate has treasured something else, and at the age of 29 Gautama Buddha left all the royal and luxurious life and walk off to search for illumination (the final release from all sorrows). The above statue depicted the phase of him meditating, before attaining enlightenment. Dhyana mudra is performed with both hands resting on lap palm face-up, the dorsal side of the right palm rest upon the left palm, the tip of the thumbs of both hands forms a triangle, which represents the jewels of Buddhism, the Buddha, the Dharma, and Sangha.

Both legs folded in lotus pose (Vajrasana). The dot on his forehead is the symbol of wisdom. His eyes are closed in deep concentration mudra. keeping meditating Buddha statues at prayer or yoga room helps to concentrate better, it typifies knowledge and erudition. It helps to maintain inner peace, unwind. Placement: Place him facing east as per your, convenience in your desire area. It is considered auspicious to place the statue northeast as Vaastu spirit leis in that corner, it will amplify the positive, and mental well-being as the corner affects spiritual and cosmic energies. The Northeast zone also represents the water element, so the Buddha statue can place using combination with water, like atop of any fountain, near a pool. You can also place the statue beneath a tree in the garden or lawn area, or flowers plants all around the statue will beautify your outdoor decor. Care: For cleaning purposes, you can bathe the statue. or can be wiped with the help of a cotton or fiber cloth.



Sand Stone Buddha Meditating Sculpture for Outdoor

[Read More](#)

SKU: 01528

Price: ₹200,000.00 inc. GST

Stock: onbackorder

Categories: [Garden Buddha Statue](#), [Buddha Statues](#), [Garden Sculptures](#), [Sitting Buddha Statues](#), [Statues & Sculptures](#)

Tags: [Big Buddha Statue for Outdoor](#), [Buddha Decor for Garden](#), [Buddha Garden Landscaping](#), [Buddha Garden Statue](#), [Buddha Home Decor](#), [Buddha Home Decor Statues](#), [Buddha Home Statue](#), [Buddha Stone Sculpture](#), [Buddha Stone Statue Manufacturer](#), [Craft Decoration for Home](#), [Decorative Statues for Home](#), [ft Buddha Statue](#), [Hindu God and Goddess](#), [home décor](#), [Home Statue Decor](#), [Indian Statues](#), [Lord Buddha Idols](#), [Sand Stone Buddha Statue](#), [Sandstone Buddha Statue](#)

Product Description

Sand Stone Buddha Meditating Sculpture for Outdoor is an unembellished yet swanky piece. A tannish color Buddha statue to befit the decor.

Material: Sandstone/ Redstone **Dimension(HWL):** 72 x 48 x 24 inch

Height: 6 ft (Approx.) **Position:** Sitting

Dhyana Mudra is always done in a sitting position. Like here, the pose where Lord Buddha is meditating on a plinth, both Legs are folded, called the double lotus pose. The dorsal side of the right hand is resting over the palmer side of the left hand, together with the thumb of both hands forming a triangle by touching the tip of each other. The triangle is a symbol depicting the unity of the triple gem, the Buddha, the Dharma, the Sangha, The Dhyana mudra signifies, the balance of thought, senses, and tranquility. A prince by born, changed his path towards looking at life in a different prospect after seeing an old man, a sick, a funeral, and a religious ascetic. He realizes that suffering is the reason for all loss and pain, so he left his luxurious and royal life at the age of 29 in search of illumination. Which he later achieve 6 years of meditating under a fig tree, and spent the rest of his life teaching others about his findings. His teaching is known as "Dharma", sagacity, altruism, bounty, solicitude is an important trait to lead a peaceful life. According to Feng-Sui, earth color tones Buddha statue, or made from stone is dedicated to well-being, self-care, and boundaries. To make the atmosphere calm and soothing placing a Buddha statue will amplify the positivizes. As mediating pose depicts peace and composure it will help to boost your inner peace. **Placing:** Buddha made from stone or clay said to activate the earth element when placed in Northeast or Southwest and center. Not just religious significance also make a decorative item to beautify your space. The color blends easily with nature, around plants, water elements in your garden, pool, lawn, etc. **Care:** It is very simple to restore the look, clean it with water whenever you see any dust on it, or else you can simply wipe it with a cotton cloth to get rid of dust compile.



Bansi Paharpur Big Teaching Outdoor

[Read More](#)

SKU: 01527

Price: ₹800,000.00

Stock: onbackorder

Categories: [Buddhism](#), [Garden Sculptures](#), [Sculptures](#)

Tags: [Bansi Paharpur](#), [Buddha Statue for Garden](#), [Buddha Garden Landscaping](#)

[Buddha Home Decor](#), [Buddha Home Decor Statues](#), [Buddha Home Statue](#), [Buddha Stone Sculpture](#), [Buddha Stone Statue Manufacturer](#), [Craft Decoration for Home](#), [Decorative Statues for Home](#), [ft Buddha Statue](#), [Hindu God and Goddess](#), [home décor](#), [Home Statue Decor](#), [Indian Statues](#), [Lord Buddha Idols](#), [Sandstone Buddha Statue](#)

Product Description

Material: Pink Sandstone **Dimension (HWL) :** 96 x 64 x 30 inch

Height : 8 ft **Position:** Sitting

Description: Bansi Paharpur Pink Sandstone Big Teaching Buddha Statue for Outdoor, the symbol of wisdom and intellect. a touch of spirituality with its divine artistry. Born as Siddhartha Gautama later became known as "The Buddha". He left the princely life at the age of 29, and achieve enlightenment at the age of 35 by meditating under a banyan. His teachings focused mainly why human suffers and how to overcome it. He taught about four noble truths which can be achieved by following the eightfold path. these are: 1. Right Understanding 2. Right Thought 3. Right Speech 4. Right Action 5. Right Livelihood 6. Right effort 7. Right mindfulness 8. Right concentration He taught the four noble truths, the only way to free one's self from suffering, those are: 1. Suffering -Dukha 2 The cause of suffering- Samudaya 3. The end of suffering - Nirhodha 4. The path that leads to the end of suffering- Magga He spent the rest of his life expounding others about how to reach enlightenment. The above statue depicts the teaching form, where he first gave his sermon in Sarnath. Sitting comfortably in a double lotus pose known as Vajrasana, right hand folded near the chest (symbolizing his teaching are straight from his heart) the tip of index and thumb making a circle, the left hand reposed on the lap forming the same circle. The circle represents the wheel of Dharma and the remaining 3 fingers of both hands remain extended and have religious significance. The three fingers of the right hand represent Hearers (the middle finger)of the teachings, lonesome realizers (Ring finger), Mahayana (little finger). The other three fingers from the left hand represent three jewels of Buddhism, The Buddha, The Dharma, The Sangha. The dot on his forehead symbolizes wisdom. The teaching Buddha is widely known as Dharma Chakra Buddha, people who are seeking academic achievements and spiritual growth, This statue will be work wonder in their life as teaching Buddha himself a representation of wisdom and intellect. The statue will evoke mindfulness and enlightenment into your life. **Placing:** The northeast sector is the best option to keep the Dharma chakra Buddha, keep the statue facing always in the east direction so you can rip the benefits. The off-white color is easily blended with the background so it's convenient to place him in any outdoor area for decoration purposes, like near the fountain, pool area, garden, back yard, etc. You can decorate the statue with flower plants around him. **Care:**

Sandstone is a durable material and can easily endure a storm. Clean the statue with water, to avoid dirt from compiling or you can use a fiber cloth to wipe.



Odisha Sandstone Statue of Meditating Lord Buddha on a Pedestal

[Read More](#)

SKU: 01526

Price: ₹140,000.00 inc. GST

Stock: onbackorder

Categories: [Garden Buddha Statue](#), [Buddha Statues](#), [Garden Sculptures](#), [Sitting Buddha Statues](#), [Statues & Sculptures](#)

Tags: [Big Buddha Statue for Outdoor](#), [Buddha Decor for Garden](#), [Buddha Garden Landscaping](#), [Buddha Garden Statue](#), [Buddha Home Decor](#), [Buddha Home Decor Statues](#), [Buddha Home Statue](#), [Buddha Stone Sculpture](#), [Buddha Stone Statue Manufacturer](#), [Craft Decoration for Home](#), [Decorative Statues for Home](#), [ft Buddha Statue](#), [Hindu God and Goddess](#), [home décor](#), [Home Statue Decor](#), [Indian Statues](#), [Lord Buddha Idols](#), [Sitting Lord Buddha Statue](#)

Product Description

Odisha Sandstone Statue of Meditating Lord Buddha on a Pedestal is a highly distressed finish sculpture just as collectible as it is. The earthy tan statue is bound to take away your stress.

Material: Sandstone **Height:** 5 ft **Dimension(HWL):** 60 x 45 x 26 inch **Position:** Sitting Buddha "The enlightened one" aka Shakya muni Buddha. The founder of Buddhism. In much Hindu belief, he is considered to be the 9th incarnation of Lord Vishnu. He was the son of Shudhodana, the king of the Shakya tribe. He was named Siddhartha Gautama (whose purpose has been attained). Right after his birth king Shudhodana received a presage about his son, that he would either be a powerful king or will be a spiritual leader, acknowledge this the king kept him away from all the awful things which would turn his mind from samsara, as he wanted his son to be his successor. At the age of 16, he got married to Yashodhara and became a father of a son named Rahula. Everything was going smoothly until Gautama Buddha come

across four bitter truths of life when he saw an old man, a sick man, a funeral, and an ascetic, which changed his perception of looking into life, and in desired to search of a solution he forsakes all luxury life and left the kingdom at the age of 29. Six years later he achieve, enlightenment, meditating under a fig tree near Bodh Gaya. And live the rest of his life teaching others to bring off enlightenment. The above statue portrays the phase of attaining enlightenment. sitting cozily in a pedestal, in *Vrajasana* called as double lotus pose, resting both hands on lap, the right hand Dorsey is above the left palm, forming a triangle with the tip of the thumb of both hands. Eyes are closed completely in deep concentration. The Dhyana mudra Buddha statue is widely recognized as Amitabha Buddha (the infinite light). Meditation Buddha represents peace and calmness, keeping this statue, these traits naturally develop in our hearts. Will experience calm and spacious feeling in mind. **Placing:** Best to place him at prayer room or meditation room facing east, as at the time of meditating Lord Buddha use to meditate at the time of sunrise. If you don't have any proper place, then set him any corner where you can relax and meditate peacefully. Adding a Buddha statue in your garden, pool, fountain, or lawn is the best idea to walk peacefully around. It will not only amplify the nature spirit but also boost the inner peace and you will feel more relaxed. Using lush green plants, flower plants, or beneath a tree will enhance the energy as well as the look of the place. **Care:** Sandstone is a natural stone, quite easy to clean. You just need water to clean and a fiber cloth is enough to dust off them.



Odisha Sandstone Framed Meditation Statue

[Read More](#)

SKU: 01525

Price: ₹335,000.00

Stock: onbackorder

Categories: [Garden Statues](#), [Garden Sculptures](#), [Sculptures](#)

Tags: [Big Buddha Statue](#), [for Garden](#), [Buddha Statue](#), [Garden Statue](#), [Buddha Statue](#), [Decor Statues](#), [Buddha Statue](#), [Sculpture](#), [Buddha Statue](#)

[Decoration for Home](#), [Decorative Statues for Home](#), [ft Buddha Statue](#), [Hindu God and Goddess](#), [home décor](#), [Home Statue Decor](#), [Indian Statues](#), [Lord Buddha Idols](#)

Product Description

Odisha Sandstone Natural Framed Meditating Big Buddha Statue is a weathered finish soothing sculpture to give an illusion of age. Make a wonderful place to display the excellent piece to add tranquility.

Material: Sandstone **Height:** 6 ft **Dimension(HWL):** 72 x 48 x 24 inch **Position:** Sitting "Buddha" the word literatim means intellect or intelligence or wisdom. He was the founder of Buddhism. "Not do any evil, be gracious, purify your heart" this is what all the teaching of Buddhas. After attaining enlightenment at 39 he spent the rest of his life teaching others about his findings and how to achieve them. Meditating Buddha is a reflection of focused concentration, mudras are nonverbal expressions, consisting of sitting posture, the gesture of hands, fingers posture symbolizing divine powers and their gestural manifestation. Meditating Buddha is generally shown in sitting on a pedestal with both legs crossed each other, in a double lotus pose known as Vajrayana. Both hands in the lap, the dorsal of right-hand above the palm of the left hand, forming a triangle with the thumb of both hands. The eye is closed completely in deep concentration mudra. The triangle signifies the 3 treasures of Buddha, The Buddha himself, The Dharma, and The Sangha.

- **The Buddha** means the Goal of Buddhist spiritual life, the end of suffering for anyone who attains it.
- **The Dharma** means The experience by the enlightened minds.
- **The Sangha** means the spiritual community

Keeping a meditating Buddha at your desired place elevates the inner consciousness, stimulus the spiritual awakening. Keeping the Buddha statue at the work station/office upturns more energy and clarity of mind reduces workplace stress. An earthy color Buddha sculpture represents self-care and well-being, so it will be favorable to keep one in your desired place.

Placing: A sculpted Buddha can be placed at Northeast or Southwest or at the center activates the earth element. As Buddha himself is a symbol of enlightenment, and inner peace so it stimulates the energy of that corner. The northeast zone also represents a water element so you can keep a Buddha statue combined with the water element, like atop of fountain or pool, beneath a tree, besides plant, it will make a soothing as well as the beautiful environment with its look and positive vibe. **Care:** The sandstone is the most durable material with age, and is also easy to maintain and clean. Use water or cloth to clean the statue.



Odisha Sandstone with Polished Framed Meditating Big Buddha Statue

[Read More](#)

SKU: 01524

Price: ₹520,000.00 inc. GST

Stock: onbackorder

Categories: [Garden Buddha Statue](#), [Buddha Statues](#), [Garden Sculptures](#), [Sitting Buddha Statues](#), [Statues & Sculptures](#)

Tags: [Big Buddha Statue for Outdoor](#), [Buddha Decor for Garden](#), [Buddha Garden Landscaping](#), [Buddha Garden Statue](#), [Buddha Home Decor](#), [Buddha Home Decor Statues](#), [Buddha Home Statue](#), [Buddha Stone Sculpture](#), [Buddha Stone Statue Manufacturer](#), [Craft Decoration for Home](#), [Decorative Statues for Home](#), [ft Buddha Statue](#), [Hindu God and Goddess](#), [home décor](#), [Home Statue Decor](#), [Indian Statues](#), [Lord Buddha Idols](#)

Product Description

Odisha Sandstone with Polished Framed Meditating Big Buddha Statue, a rich and vintage piece of art. No matter where you place the statue, it is worth watching.

Material: Sandstone / Khondalite stone **Height:** 8 ft **Dimension(HWL):** 96 x 64 x 30 inch

Position: Sitting

Buddha means wisdom, intellect, and intelligence. Buddha teaches that the path of enlightenment can be achieved with morality, meditation, and wisdom. Although being born as a prince and leading a luxurious life he left everything behind in search of a solution to end the pain and sorrow one comes across in life. After six years of searching, he finally attained enlightenment by meditating under a banyan tree. He spent the rest of his life teaching others about how to achieve illumination. It's not a medicine to swallow but a rigorous practice of mindful thought and action. The above statue depicts his meditation journey, seated until attaining enlightenment. It is one of the calmest postures of Lord Buddhas. Sitting on a pedestal in Vajrasana (double lotus pose), both hands resting on the lap, the dorsal of the right hand resting on the palm of the left hand with the thumbs touching each other, forming a triangle shape which is a symbol of spiritual fire, which consumes all impurities. The triangle also

denotes 3 jewels of Buddha, the Buddha himself, the Dharma, and the sangha.

The Buddha represents the goal of Buddhist spiritual life, the end of suffering for the one who attains it, next the **Dharma** signifies the experienced learn by the enlightenment mind and the **Sangha represents** the spiritual community. The dot on his forehead is a symbol of wisdom, completely closed eyes depict deep concentration (the mind became undisturbed). Happiness comes from serenity, Lord Buddha's meditating statue is a reflection of placidity. So keeping a meditating Buddha will enhance the positivity around the space. The surrounding will feel more soothing and unwind. **Placing:** Northeast and Southwest is the most favorable place to keep the meditating Buddha. Face him always to the east as Buddha used to meditate at the hour of sunrise. To make your outdoor more reposeful, place a meditating Buddha in your garden, pool, fountain, or lawn. You can spread small colorful stones all around the statue to amplify the decoration of the outdoor.

Care: No special care is needed for material like sandstone. wipe the statue using a cloth or a broom is enough. You can also bathe the statue, and get rid of the debris.
